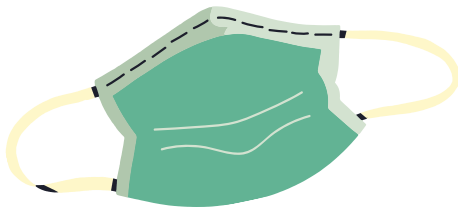


# You must wear a face covering to enter these premises

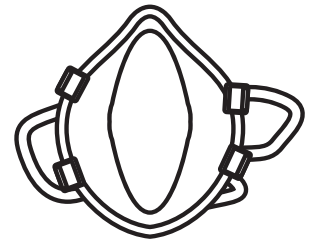
County of Prince Edward By-law 115-2020



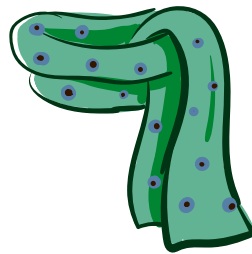
Non-Medical Mask



Bandana or Scarf



Other Mask



## FACE COVERINGS MUST COVER THE NOSE, MOUTH AND CHIN.

Exceptions include children under 5 years of age and people who cannot wear a face covering because of a medical condition, a disability, or on religious grounds.

No proof of exemptions required.



Stay well by staying aware.