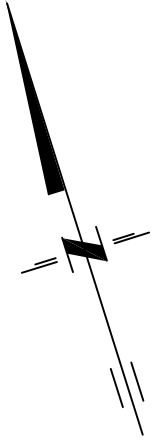
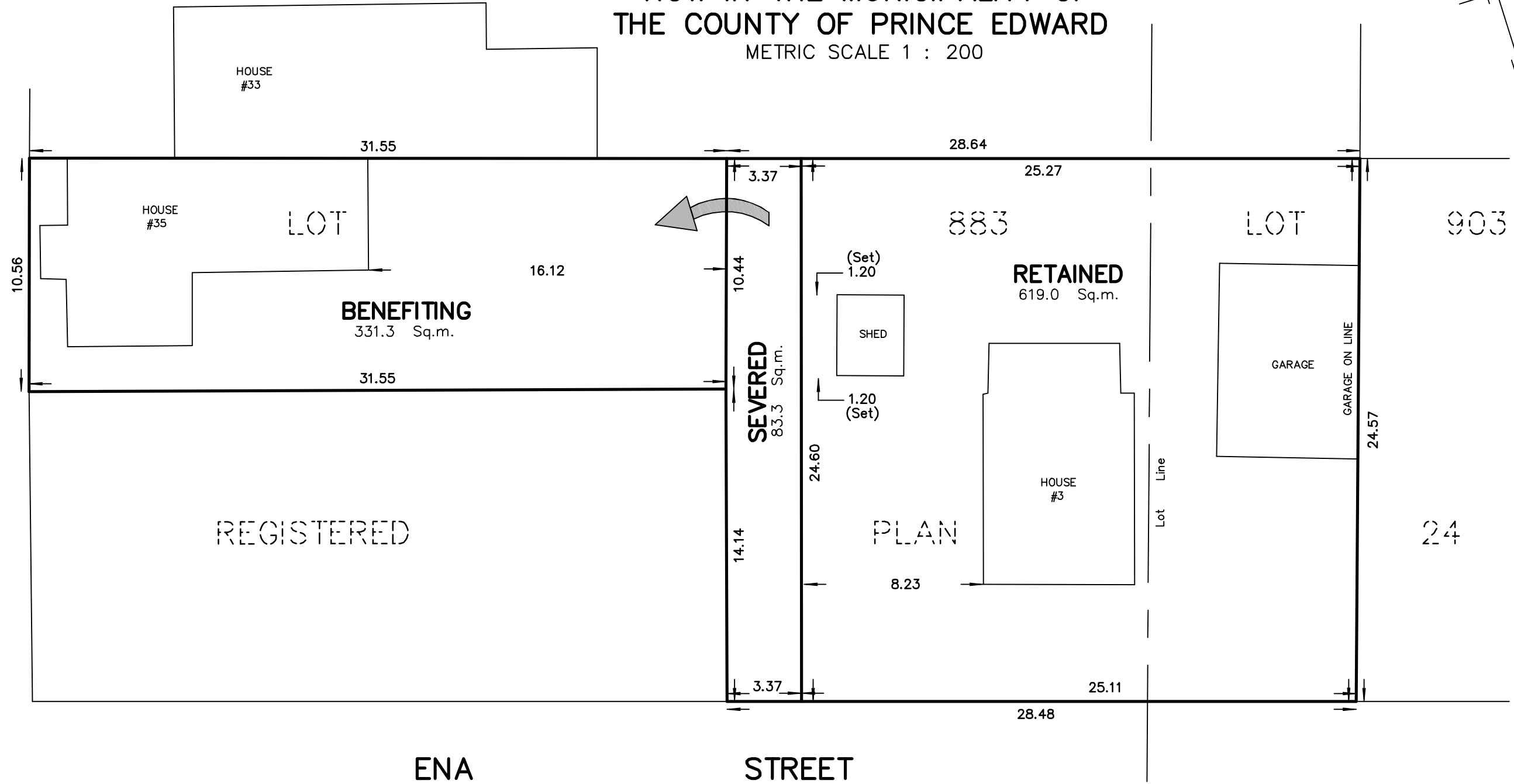


SKETCH
 PART OF LOT 883
 REGISTERED PLAN 24
 TOWN OF PICTON
 NOW IN THE MUNICIPALITY OF
 THE COUNTY OF PRINCE EDWARD
 METRIC SCALE 1 : 200



FERGUSON STREET



REGISTERED

PLAN

ENA STREET

218 CHURCH STREET BELLEVILLE, ONTARIO	WATSON LAND SURVEYORS Ltd.	K8N - 3C3 (613) 962 - 9521
July 7, 2021		PROJECT N ^o 12451-0-20