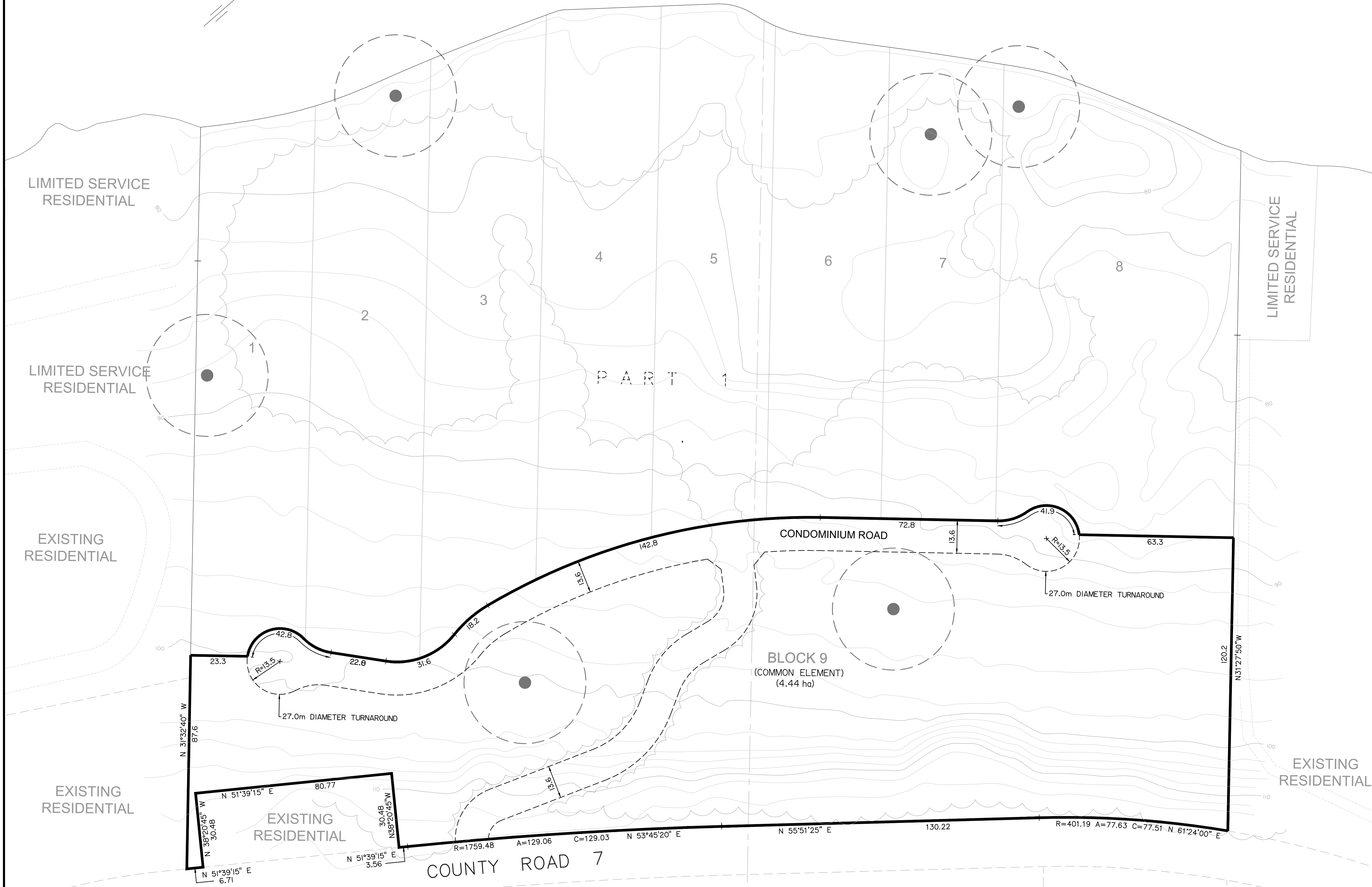
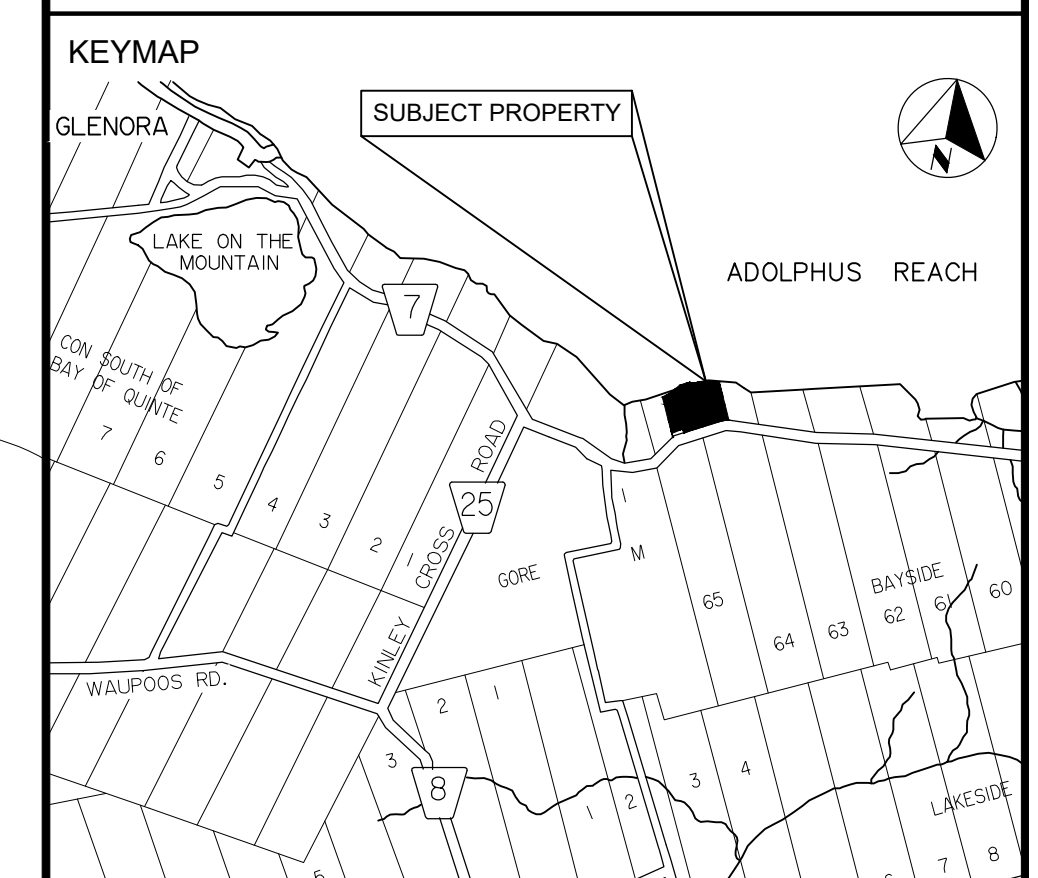


ADOLPHUS REACH



DRAFT PLAN OF COMMON ELEMENT CONDOMINIUM
CRESSY BAYSIDE ESTATES
 1041 COUNTY ROAD 7,
 PART OF LOTS 64 AND 65,
 CONCESSION BAYSIDE,
 TOWNSHIP OF NORTH MARYSBURGH,
 MUNICIPALITY OF THE
 COUNTY OF PRINCE EDWARD COUNTY
 SCALE = 1:750 METRIC



ADDITIONAL INFORMATION REQUIRED UNDER SECTION 51(17) OF THE PLANNING ACT.

- (a) SEE SURVEYOR'S CERTIFICATE.
- (b) AS SHOWN ON DRAFT PLAN.
- (c) AS SHOWN ON DRAFT PLAN.
- (d) SEE LAND USE SUMMARY.
- (e) SEE DRAFT PLAN.
- (f) AS SHOWN ON DRAFT PLAN.
- (g) AS SHOWN ON DRAFT PLAN.
- (h) PRIVATE WELL AND SEPTIC.
- (i) TOPSOIL OVER SANDY SILT.
- (j) AS SHOWN ON DRAFT PLAN.
- (k) GARBAGE COLLECTION, FIRE PROTECTION AND SCHOOL BUSES.
- (l) AS SHOWN ON DRAFT PLAN.

LAND USE SCHEDULE

LAND USE	AREA(ha)	AREA%	UNITS
BLOCK 9 - COMMON ELEMENT (PROPOSED ROAD, PRIVATE OUTDOOR AMENITY AREA)	4.44	100.0	1
SITE TOTAL	4.44ha	100.0%	1

LEGEND

- BUTTERNUT TREE TO BE RETAINED AND 25.0m BUFFER (EIS REPORT PREPARED BY AINLEY GROUP, FEBRUARY 2020)

METRIC NOTE:
 DISTANCES SHOWN ON THIS PLAN ARE IN METRES AND CAN BE COVERED TO FEET BY DIVIDING BY 0.3048.

CONTOURS NOTE:
 EXISTING CONTOURS AND TOPOGRAPHY PREPARED USING PRINCE EDWARD COUNTY GIS MAPPING AND IBW FIELD DATA CONTOURS DRAWN AT INTERVALS OF 2.0m.

PLAN COPYRIGHT
 ALL ORIGINAL DRAWINGS AND RELATED DOCUMENTS ARE THE COPYRIGHT PROPERTY OF RFA PLANNING CONSULTANT INC. REPRODUCTION IN WHOLE OR IN PART IS FORBIDDEN WITHOUT THE PRIOR WRITTEN CONSENT OF RFA PLANNING CONSULTANT INC.
 THESE DRAWINGS AND DOCUMENTS MAY NOT BE USED FOR ANY PURPOSES OTHER THAN FOR THE PROJECT FOR WHICH THEY ARE PREPARED. THE PLAN IS NOT AVAILABLE TO THIRD PARTY WITHOUT THE WRITTEN CONSENT OF RFA PLANNING CONSULTANT INC.

SURVEYOR'S CERTIFICATE
 I CERTIFY THAT THE BOUNDARIES OF THE LAND TO BE SUBDIVIDED ARE CORRECTLY SHOWN.

Kerry Boehme Nov. 12, 2020
 KERRY BOEHME DATE
 ONTARIO/LAND SURVEYOR.

IBW SURVEYORS
 5503 HIGHWAY 62 SOUTH, PRINCE EDWARD SQUARE
 BELLEVILLE, ONTARIO
 (613) 966-9898

1 DRAFT PLAN SUBMISSION	NOV. 12, 2020	RFA
DRAWN BY: L.B.	CHECKED BY: R.F.A.	DATE: NOV. 12, 2020 SCALE: 1:750

REGISTERED PROFESSIONAL PLANNER
 R.P.P.
 11/12/20

RFA
 PLANNING CONSULTANT INC.

211 Dundas Street East, Suite 202,
 Belleville, Ontario, K8N 1E2

JOB No. 595-CE