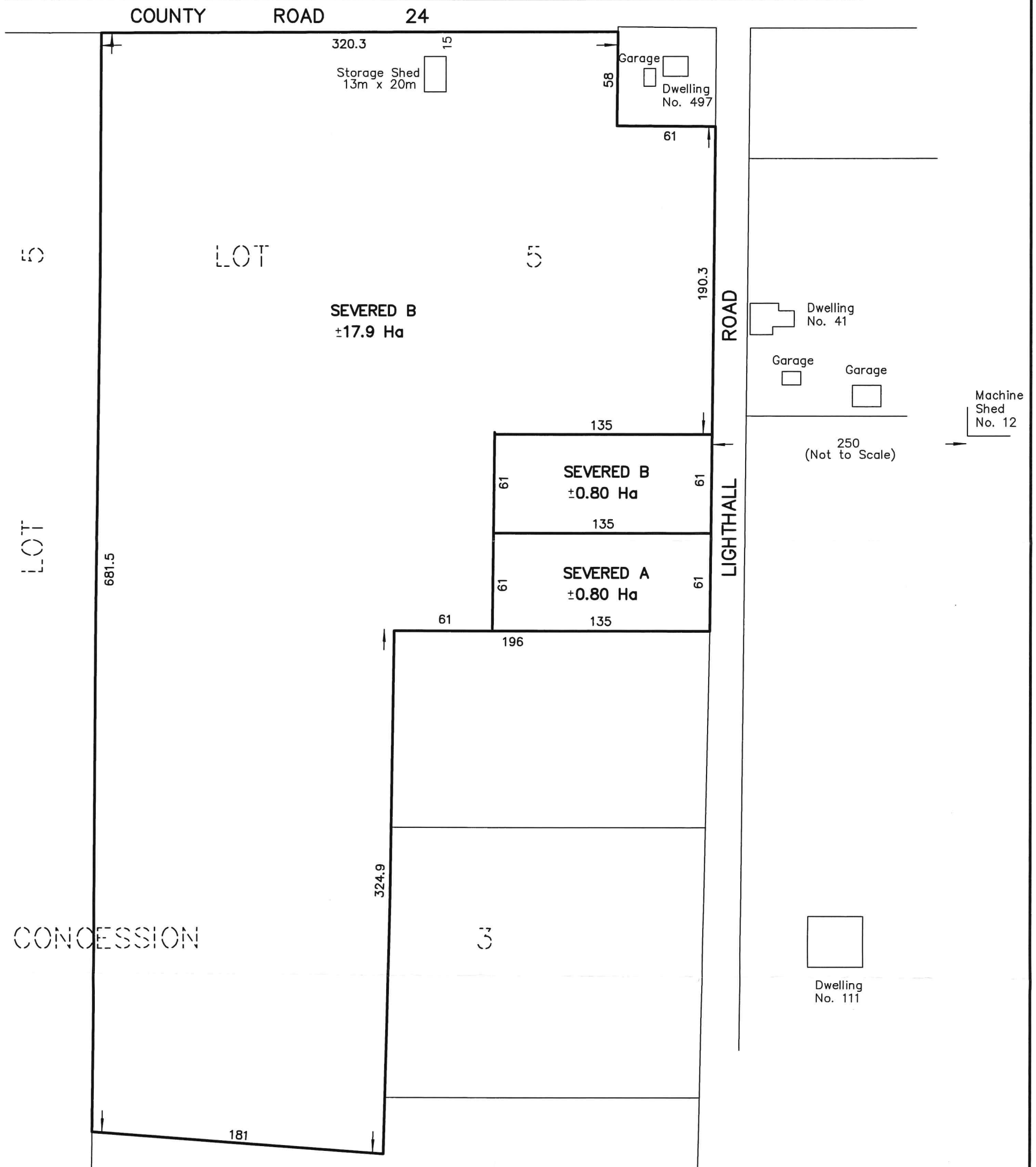
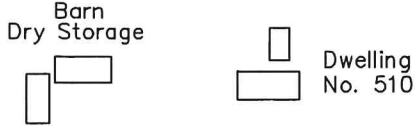
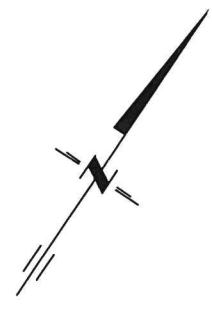


SKETCH
 PART OF LOT 5
 CONCESSION 3 SOUTH SIDE OF EAST LAKE
 TOWNSHIP OF ATHOL
 NOW IN THE MUNICIPALITY OF
 THE COUNTY OF PRINCE EDWARD



218 CHURCH STREET
 BELLEVILLE, ONTARIO

WATSON
 LAND SURVEYORS Ltd.

K8N - 3C3
 (613) 962 - 9521

NOVEMBER 5, 2020

PROJECT No 12048-B-20