

# SKETCH

PART OF LOT 119

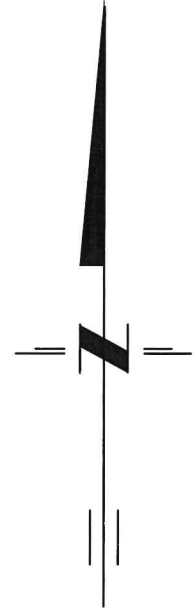
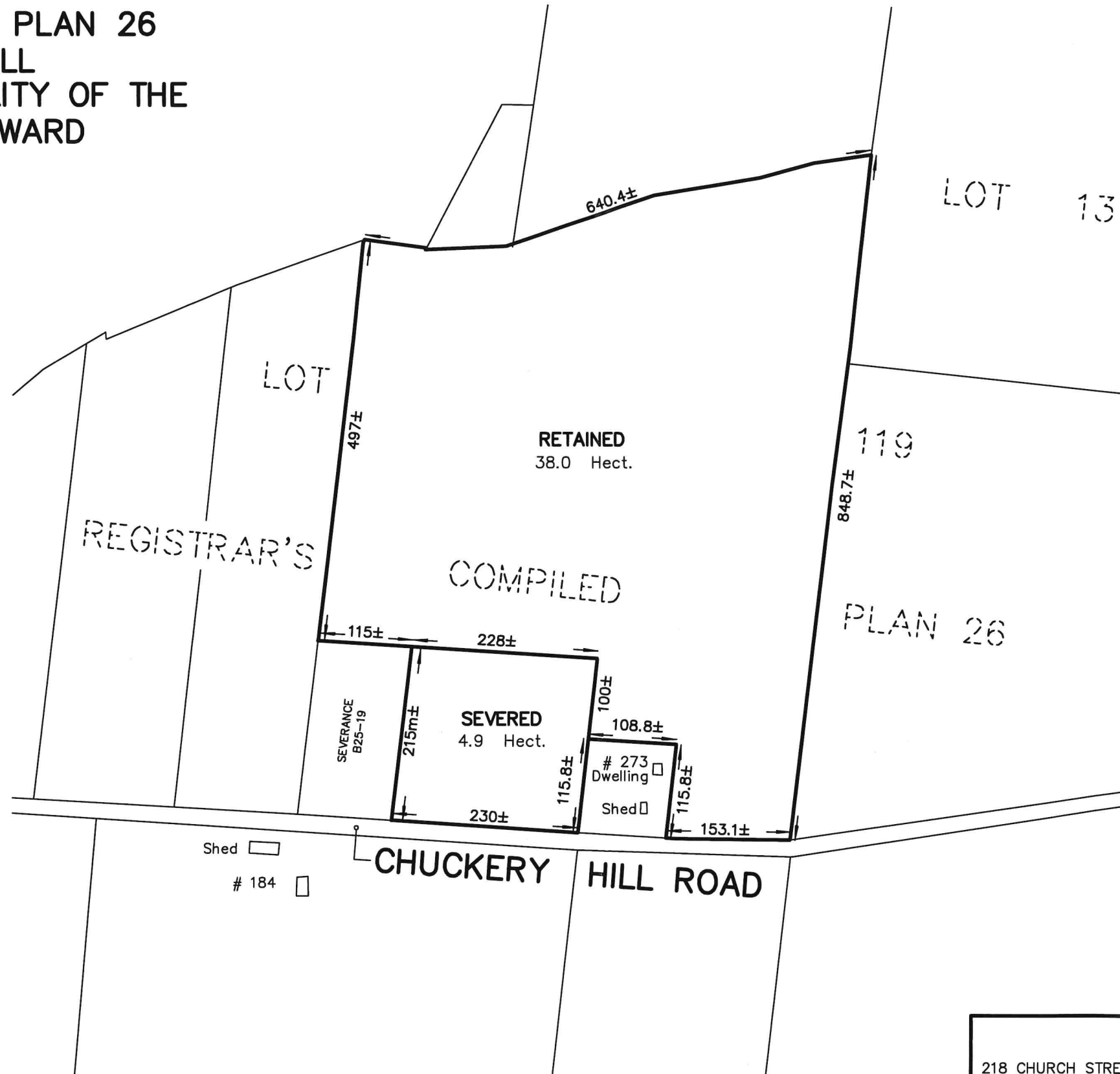
REGISTRAR'S COMPILED PLAN 26

TOWNSHIP OF HALLOWELL

NOW IN THE MUNICIPALITY OF THE

COUNTY OF PRINCE EDWARD

METRIC SCALE 1 : 6000



218 CHURCH STREET  
BELLEVILLE, ONTARIO

**WATSON**  
LAND SURVEYORS Ltd.

K8N - 303  
(613) 962 - 9521

October 13, 2020

PROJECT No 10667-F-18