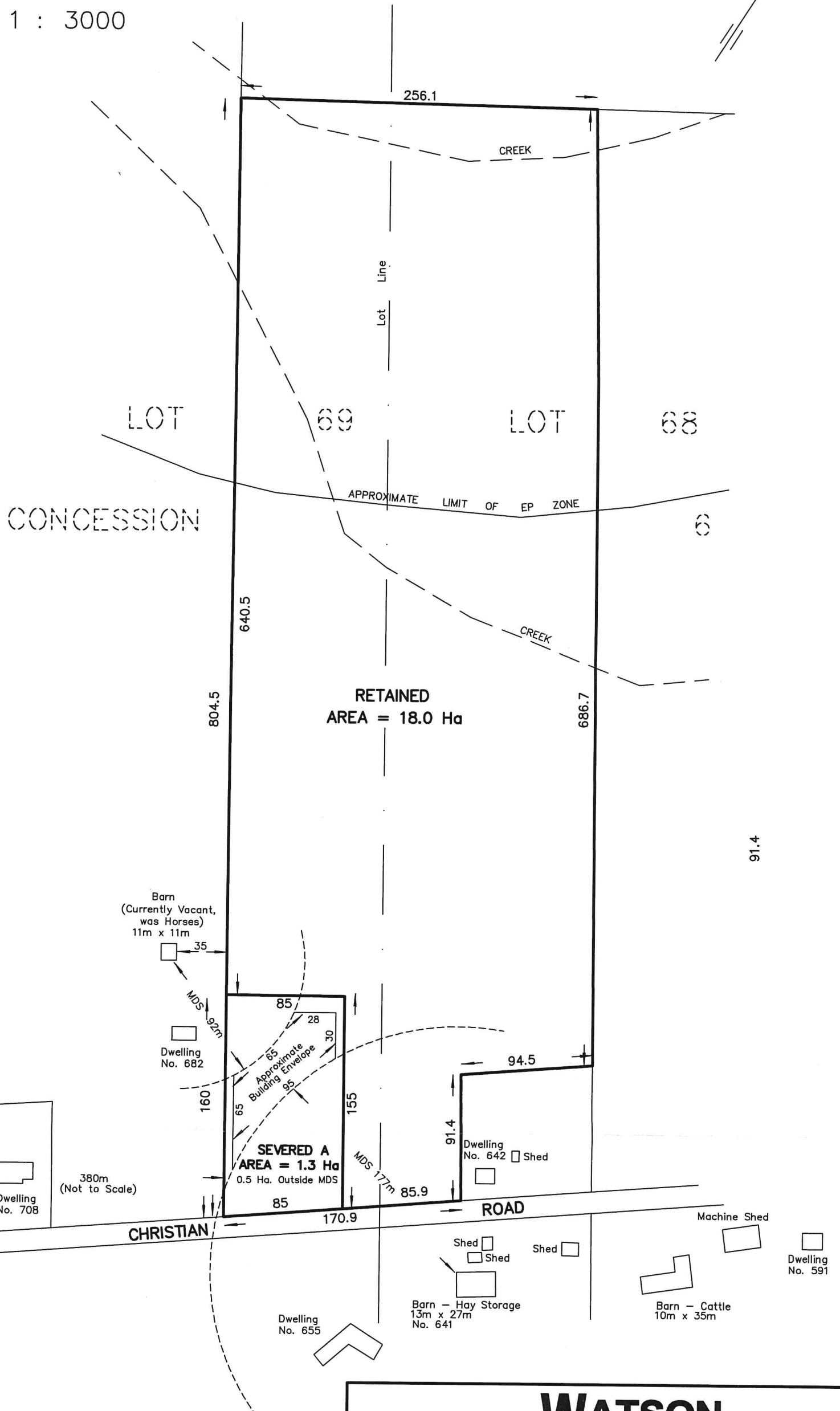
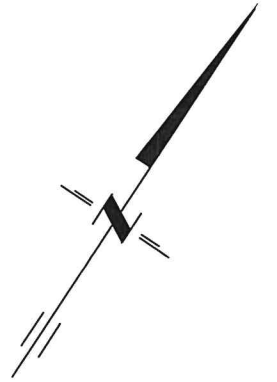


SKETCH
 PART OF LOTS 68 AND 69
 CONCESSION 6
 TOWNSHIP OF HILLIER
 NOW IN THE MUNICIPALITY OF
 THE COUNTY OF PRINCE EDWARD
 METRIC SCALE 1 : 3000



- Barn - Water Buffalo
10m x 30m
- Barn - Wood Shop
16m x 10m
- Dwelling
No. 760

218 CHURCH STREET BELLEVILLE, ONTARIO	<h2 style="margin: 0;">WATSON</h2> <p style="margin: 0;">LAND SURVEYORS Ltd.</p>	K8N - 3C3 (613) 962 - 9521
December 12, 2020	PROJECT № 12552-G-20	