

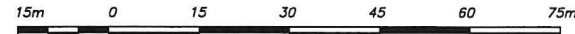
**SITE PLAN of
PART of LOTS 41 and 42
CONCESSION BAYSIDE
TOWNSHIP OF NORTH MARYSBURGH
COUNTY OF PRINCE EDWARD**

BAY OF QUINTE

(water level - August 10, 2020 - 75.05 m Q.L.D.)



SCALE = 1:750



HOPKINS CHITTY LAND SURVEYORS INC.
-2020-

LOT 42
CONCESSION

PART 2 47R-4024
PIN 55087-0113

BAYSIDE

RR2

LOT 41

PART 2 47R-5784
PIN 55087-0121

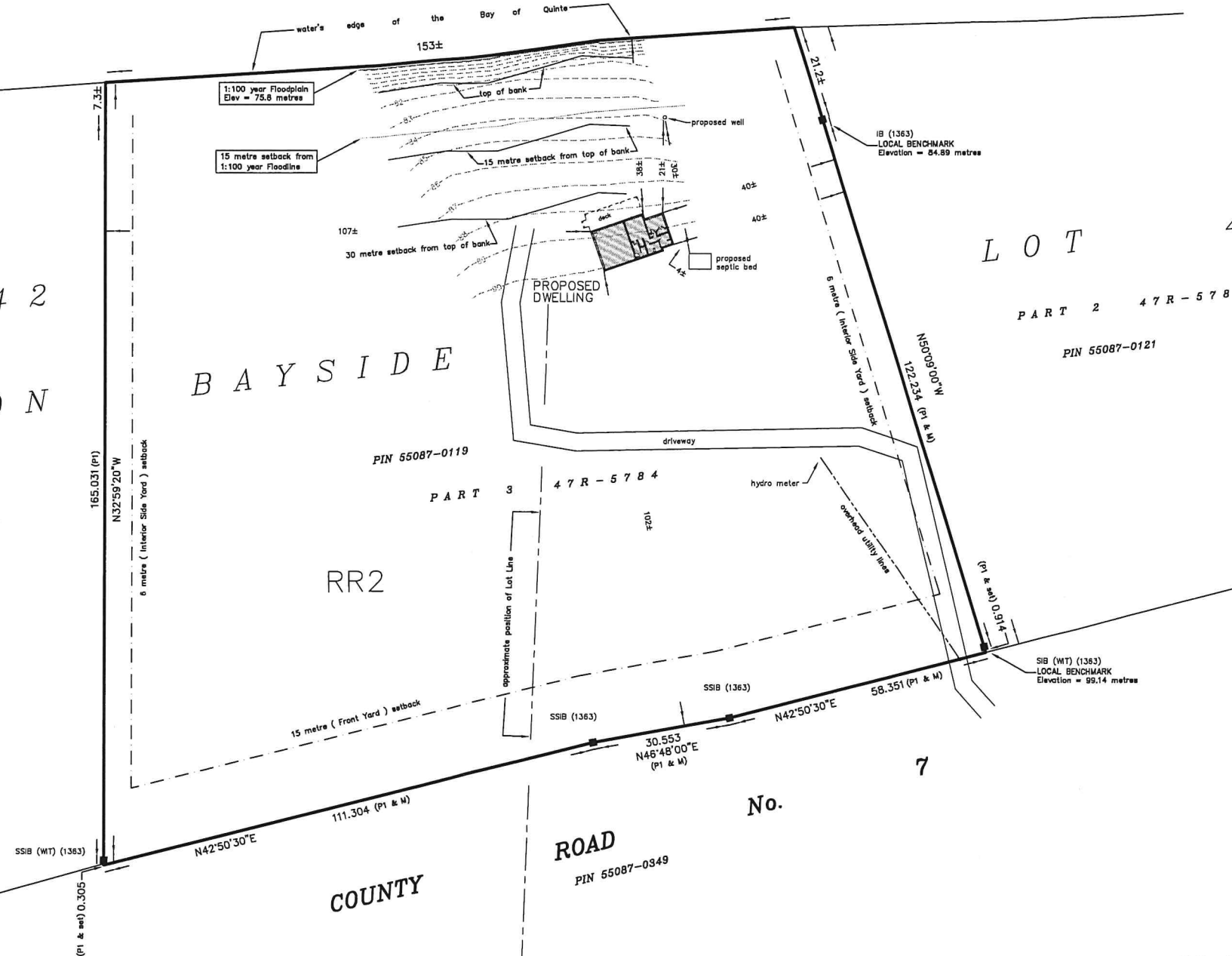
NOTE

ELEVATIONS ARE GEODETIC AND ARE DERIVED FROM SIMULTANEOUS GPS OBSERVATIONS AND ARE REFERRED TO CCVD28 DATUM.

BEARINGS ARE UTM GRID, DERIVED FROM MULTIPLE REAL TIME KINEMATIC (RTK) OBSERVATIONS, UTM ZONE 18 (75° WEST LONGITUDE) NAD83 (CSRS) (2010.0)

FOR BEARING COMPARISONS, A ROTATION OF 1°20'20" CLOCKWISE WAS APPLIED TO BEARINGS ON PLAN 47R-5784.

DISTANCES ARE GROUND AND CAN BE CONVERTED TO GRID BY MULTIPLYING BY THE COMBINED SCALE FACTOR OF 0.999880.



METRIC

Distances Shown on This Plan are in Metres and can be Converted to Feet by Dividing by 0.3048

Setback distances based on Rural Residential 2 (RR2) Zoning

Field work completed on August 10, 2020.

LEGEND:

- denotes Planted Survey Monument
- denotes Found Survey Monument
- SIB Standard Iron Bar
- SSIB Short Standard Iron Bar
- IB Iron Bar
- IB# Iron Bar (round)
- (WIT) Witness
- P1 Plan 47R-5784
- 1363 B. Roger Pickard, O.L.S.



Party Chief: DM Instrument: AT Checked By: TGM Plan By: TS

**HOPKINS CHITTY
LAND SURVEYORS INC.**
Ontario Land Surveyors
www.hopkinschitty.com

634-636 NORRIS COURT
KINGSTON, ONTARIO K7P-2R9
Tel (613) 384-9266
Fax (613) 384-3513

PROJECT No. 2020-448-1
PT LOTS 41 & 42, CON. BAYSIDE
Township of North Marysburgh