

SKETCH FOR SEVERANCE  
 PART OF LOT 28  
 CONCESSION 2  
 TOWNSHIP OF HILLIER  
 NOW IN THE MUNICIPALITY OF  
 THE COUNTY OF PRINCE EDWARD  
 METRIC SCALE 1 : 1500

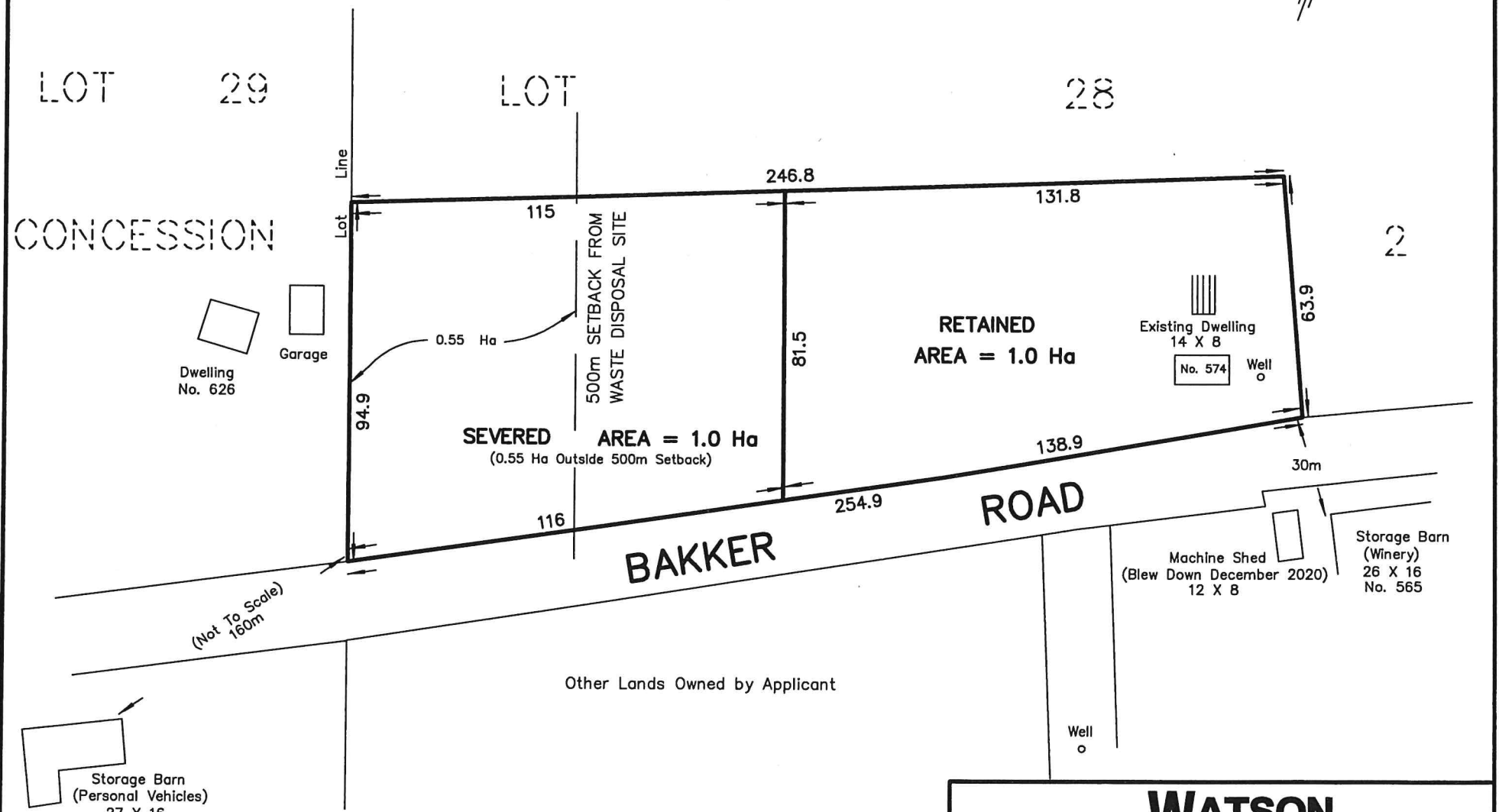


LOT 29  
 CONCESSION

LOT

28

2



218 CHURCH STREET BELLEVILLE, ONTARIO	<b>WATSON</b> LAND SURVEYORS Ltd.	KBN - 3C3 (613) 962 - 9521
DECEMBER 17, 2020		PROJECT No 11845-G-19