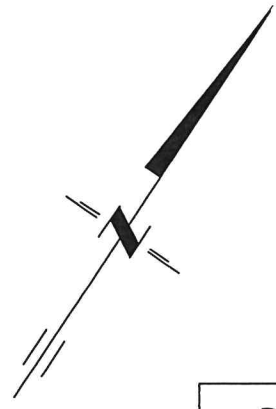
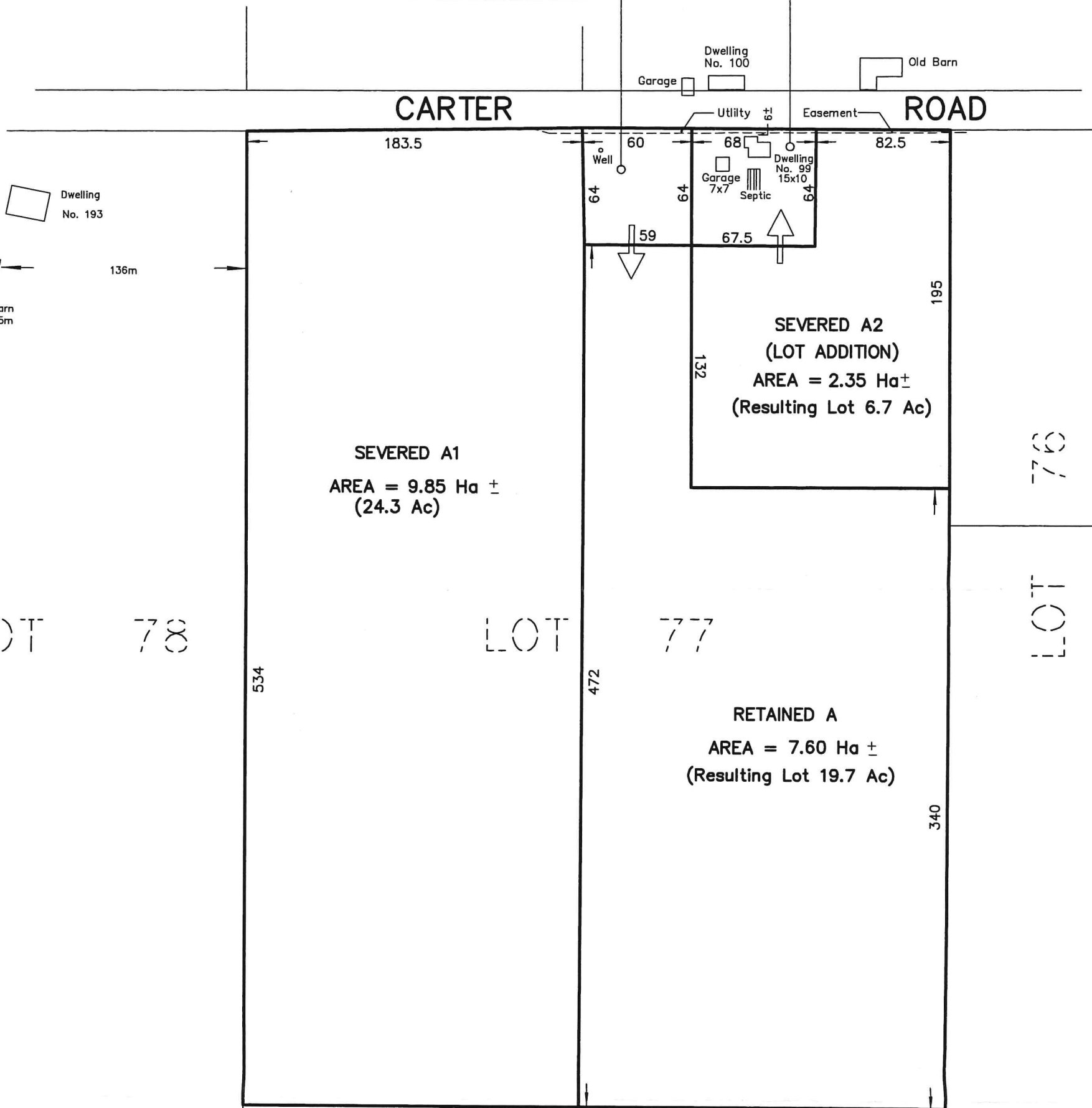


SKETCH
 PART OF LOT 77
 CONCESSION 5
 TOWNSHIP OF HILLIER
 NOW IN THE MUNICIPALITY OF
 THE COUNTY OF PRINCE EDWARD
 METRIC SCALE 1 : 2500



SEVERED B
 (LOT ADDITION)
 AREA = 0.38 Ha ±

RETAINED B
 (LOT ADDITION)
 AREA = 0.43 Ha ±



CONCESSION

218 CHURCH STREET BELLEVILLE, ONTARIO	WATSON LAND SURVEYORS Ltd.	K8N - 3C3 (613) 962 - 9521
DECEMBER 14, 2020		PROJECT No 12643-K-20