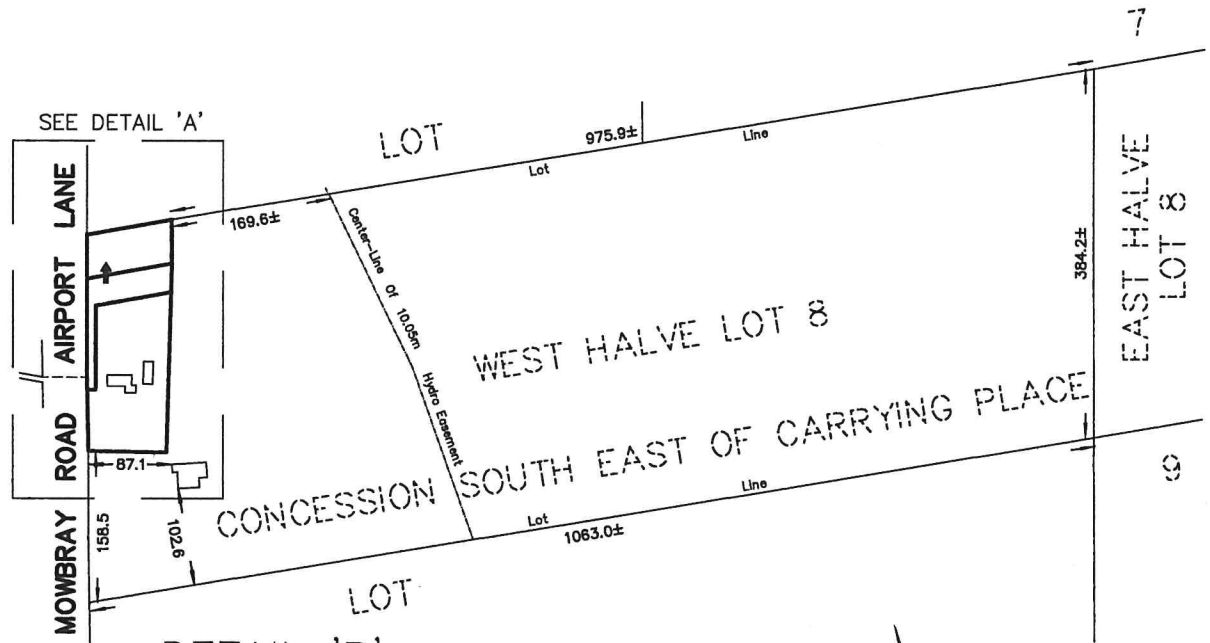
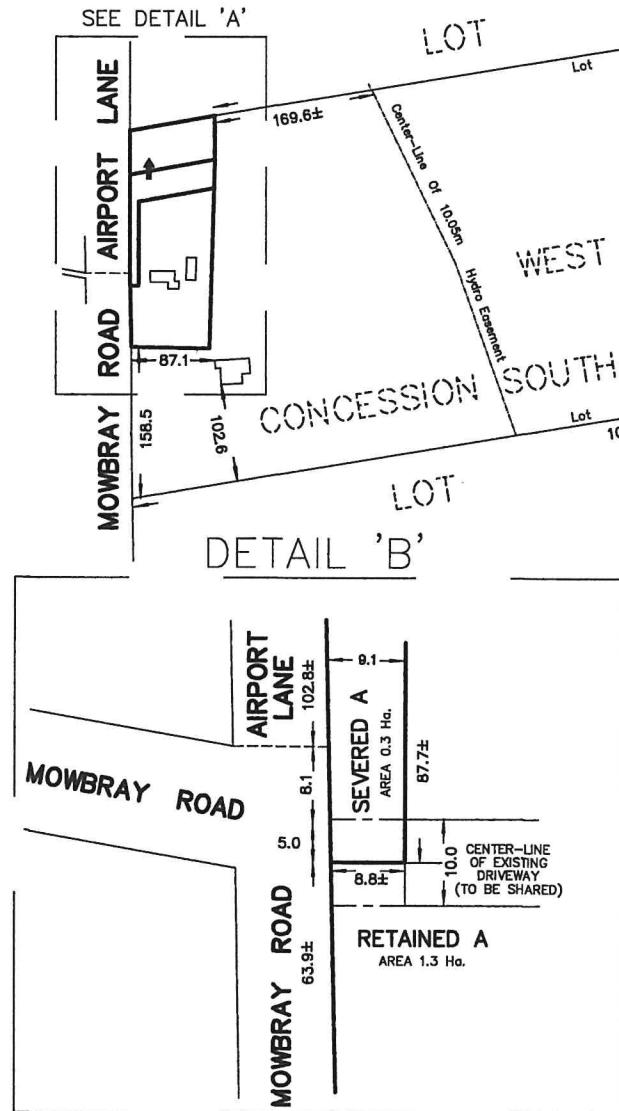
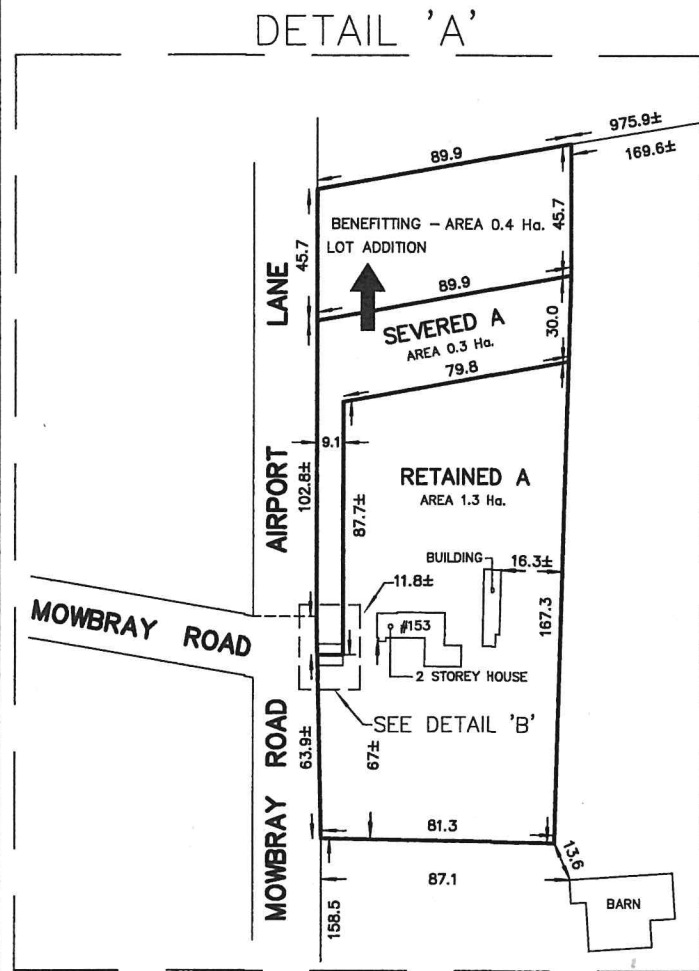


SKETCH
 PART OF LOT 8
 CONCESSION SOUTH EAST OF CARRYING PLACE
 TOWNSHIP OF HALLOWELL
 NOW IN THE MUNICIPALITY OF
 THE COUNTY OF PRINCE EDWARD
 METRIC SCALE 1 : 5000



METRIC :
 DISTANCES SHOWN ON THIS PLAN ARE IN METRES
 AND CAN BE CONVERTED TO FEET BY DIVIDING BY 0.3048.

218 CHURCH STREET
 BELLEVILLE, ONTARIO

WATSON
 LAND SURVEYORS Ltd.

K8N - 3C3
 (613) 962 - 9521

APRIL 19, 2021 PROJECT N^o 12912-L-21