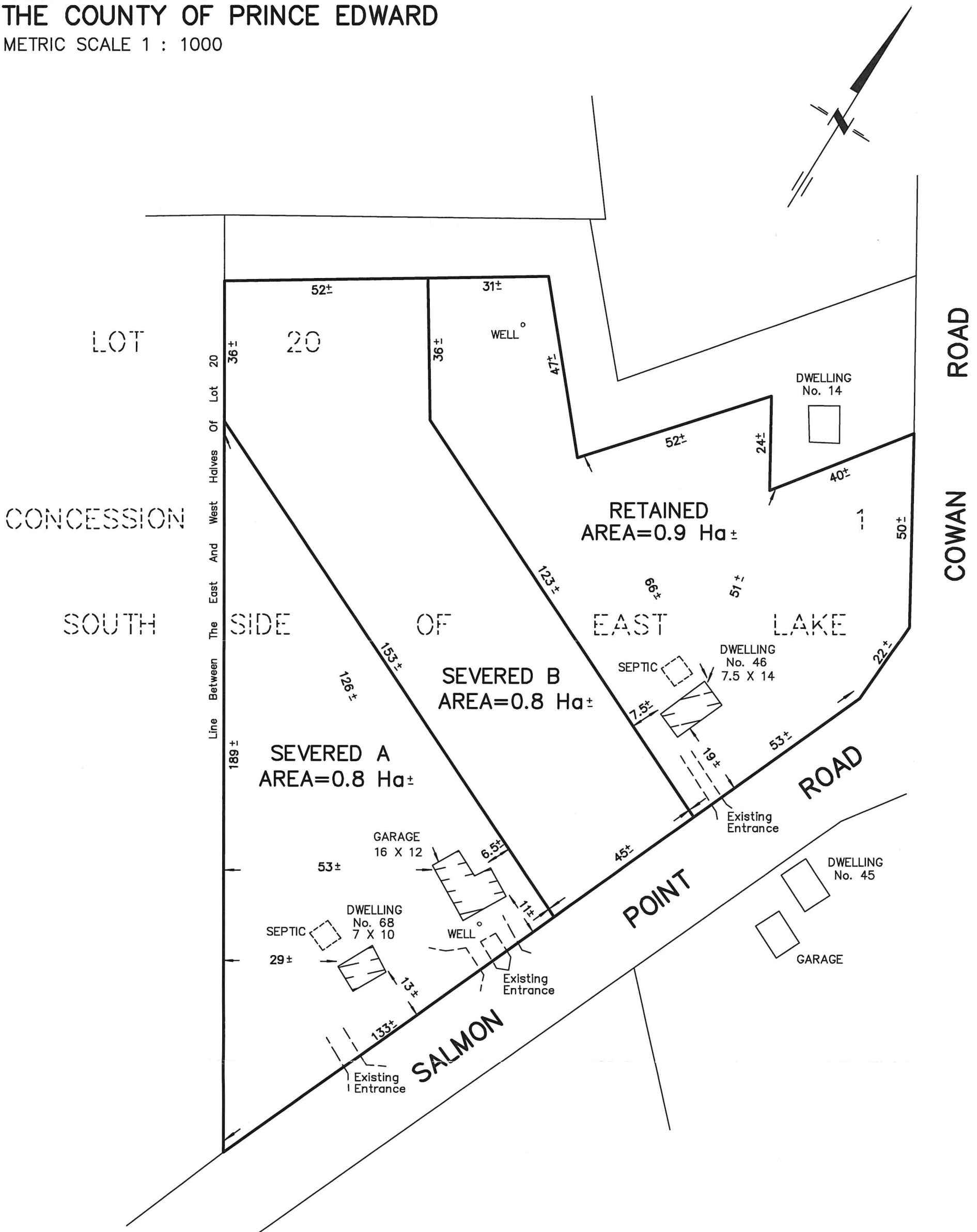


SKETCH FOR SEVERANCE
 PART OF LOT 20
 CONCESSION 1, SOUTH SIDE OF EAST LAKE
 TOWNSHIP OF ATHOL
 NOW IN THE MUNICIPALITY OF
 THE COUNTY OF PRINCE EDWARD
 METRIC SCALE 1 : 1000



218 CHURCH STREET BELLEVILLE, ONTARIO	WATSON LAND SURVEYORS Ltd.	K8N - 3C3 (613) 962 - 9521
APRIL 20, 2020		PROJECT No 11933-R-20