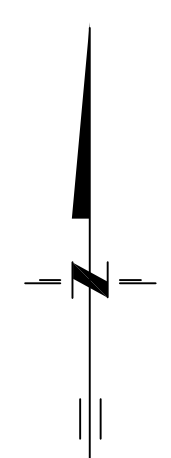
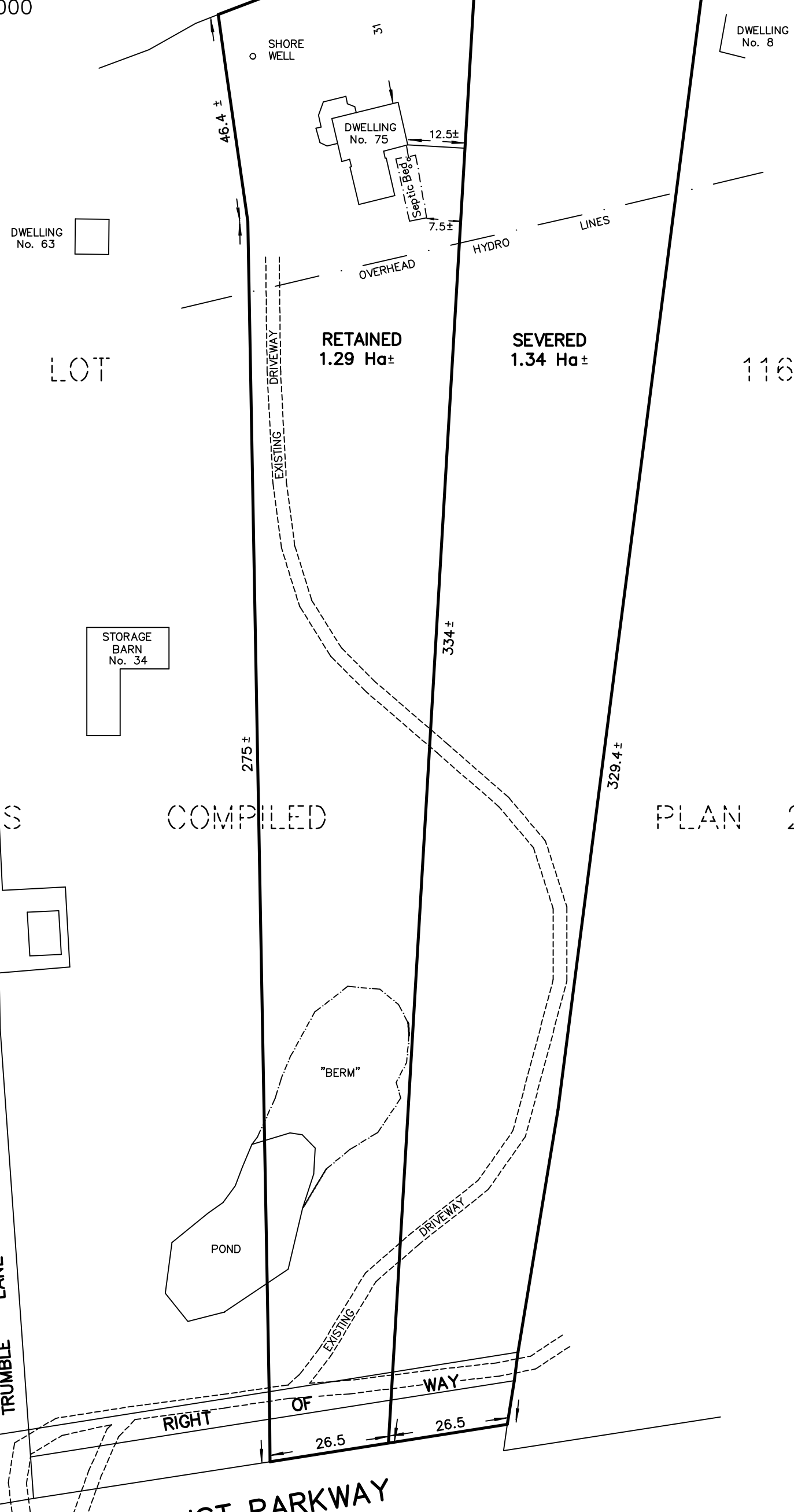


SKETCH
 PART OF LOT 116
 REGISTERED PLAN 26
 TOWNSHIP OF HALLOWELL
 NOW IN THE MUNICIPALITY OF
 THE COUNTY OF PRINCE EDWARD
 METRIC SCALE 1 :1000

BAY OF QUINTE



REGISTRAR'S

COMPILED

PLAN 26

DWELLING No. 29

TRUMBLE LANE

LOYALIST PARKWAY

218 CHURCH STREET
 BELLEVILLE, ONTARIO

WATSON
 LAND SURVEYORS Ltd.

K8N - 3C3
 (613) 962 - 9521

AUGUST 23, 2021

PROJECT No 12612-E-20