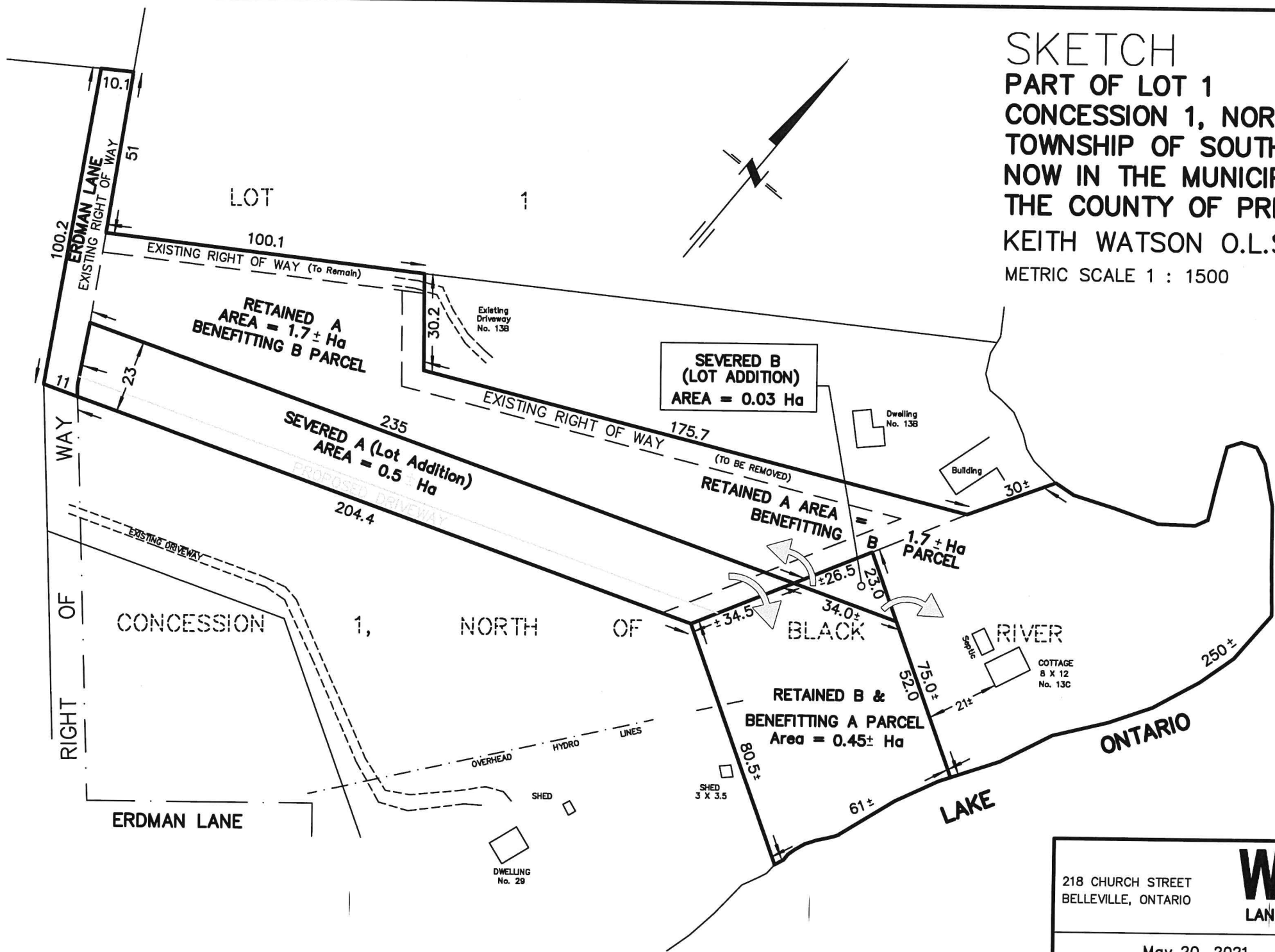


SKETCH
 PART OF LOT 1
 CONCESSION 1, NORTH OF BLACK RIVER
 TOWNSHIP OF SOUTH MARYSBURGH
 NOW IN THE MUNICIPALITY OF
 THE COUNTY OF PRINCE EDWARD
 KEITH WATSON O.L.S.
 METRIC SCALE 1 : 1500



218 CHURCH STREET BELLEVILLE, ONTARIO	WATSON LAND SURVEYORS Ltd.	K8N - 3C3 (613) 962 - 9521
May 20, 2021	PROJECT No 12383-P-20	