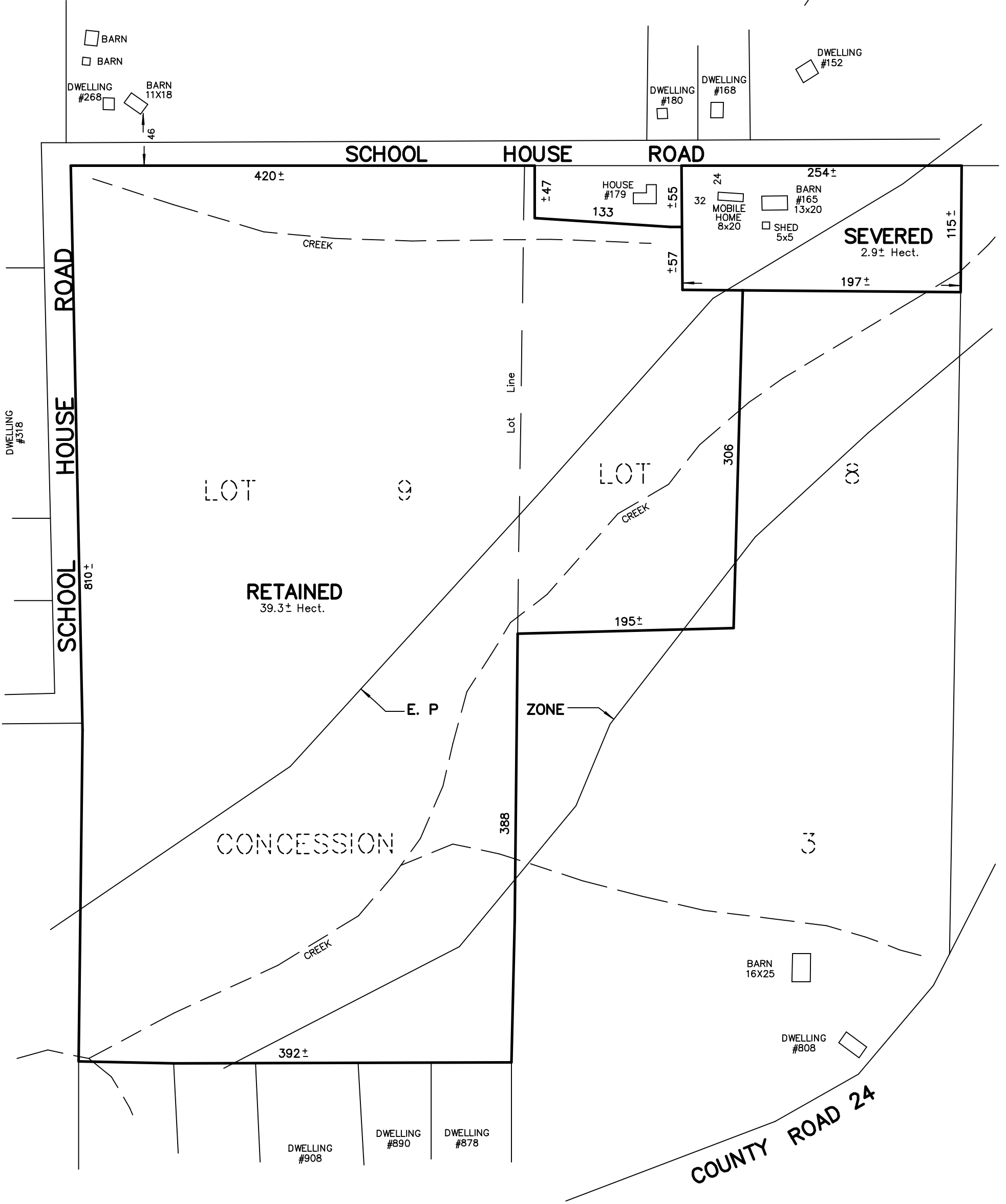
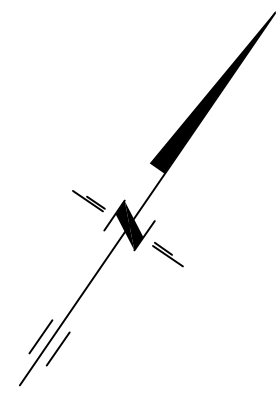


# SKETCH

PART OF LOTS 8 AND 9  
CONCESSION 3 SOUTH SIDE OF EAST LAKE  
TOWNSHIP OF ATHOL  
NOW IN THE MUNICIPALITY OF  
THE COUNTY OF PRINCE EDWARD  
METRIC SCALE 1 : 3500  
KEITH WATSON O.L.S.



218 CHURCH STREET BELLEVILLE, ONTARIO	<b>WATSON</b> LAND SURVEYORS Ltd.	K8N - 3C3 (613) 962 - 9521
		September 28, 2021