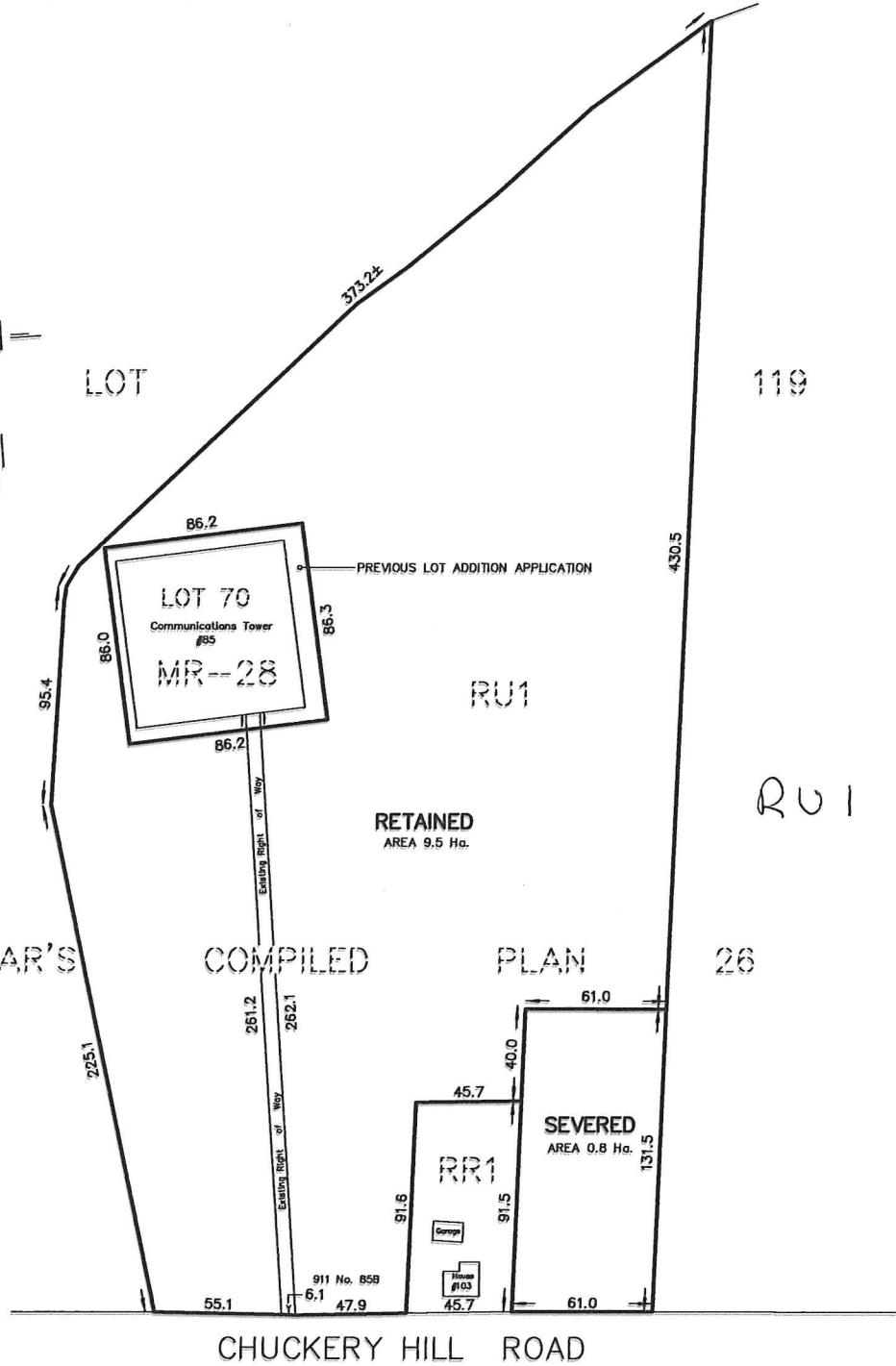
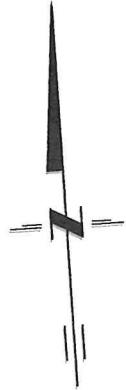


SKETCH
 PART OF LOT 119
 REGISTRAR'S COMPILED PLAN 26
 TOWNSHIP OF HALLOWELL
 NOW IN THE MUNICIPALITY OF
 THE COUNTY OF PRINCE EDWARD

METRIC SCALE 1 : 2000
 0 10 20 40 60 80 100 200 METRES



METRIC :
 DISTANCES SHOWN ON THIS PLAN ARE IN METRES
 AND CAN BE CONVERTED TO FEET BY DIVIDING BY 0.3048.

218 CHURCH STREET BELLEVILLE, ONTARIO	WATSON LAND SURVEYORS Ltd.	K8N - 3C3 (613) 962 - 9521
JUNE 03, 2021		PROJECT No 13079-E-21