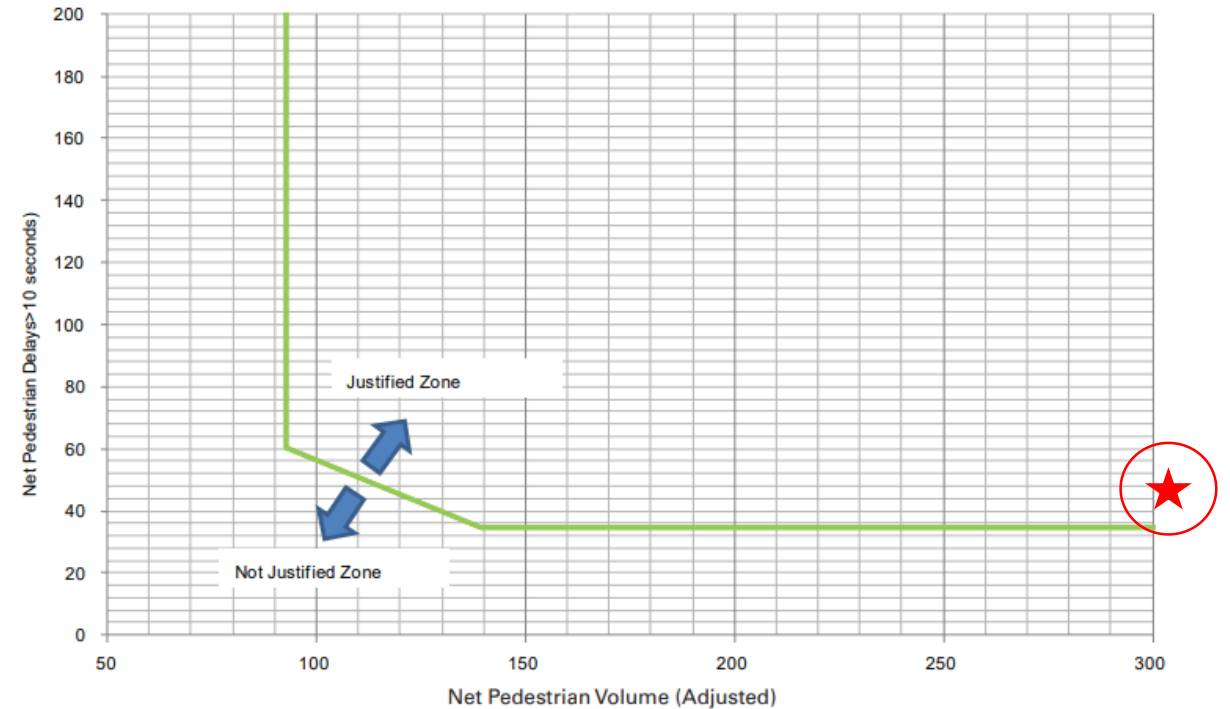
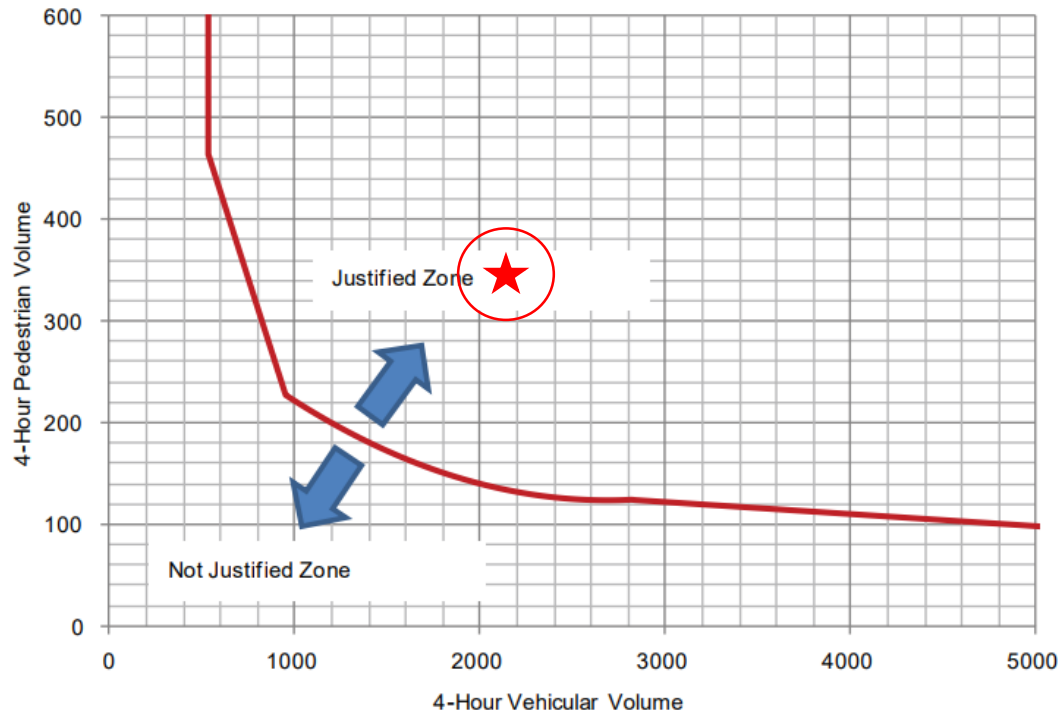


WELCOME!

**BLOOMFIELD PEDESTRIAN CROSSOVER (PXO)
PUBLIC INFORMATION CENTRE**

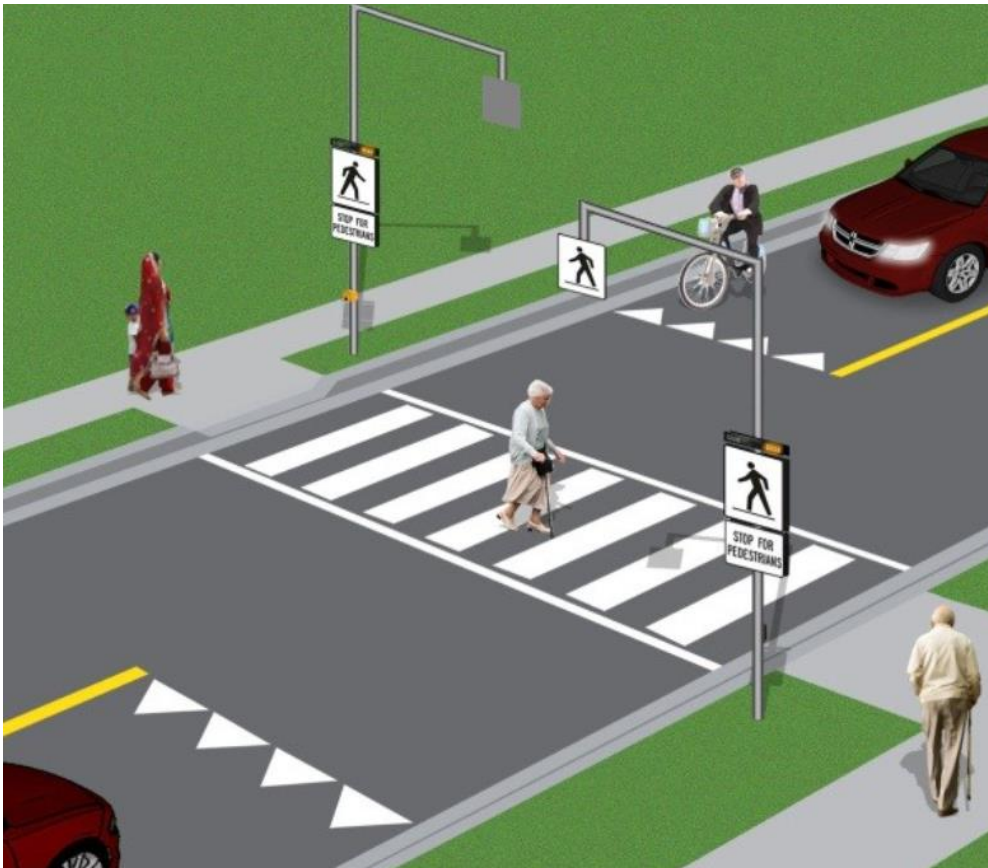
Nov. 8, 2021 @ 2-4pm & Nov. 10, 2021 @ 8-9pm
Bloomfield Town Hall (289 Main Street, Bloomfield)

WHY?



PXO Warrant Study Conducted:
PXO justified based on traffic & pedestrian volumes

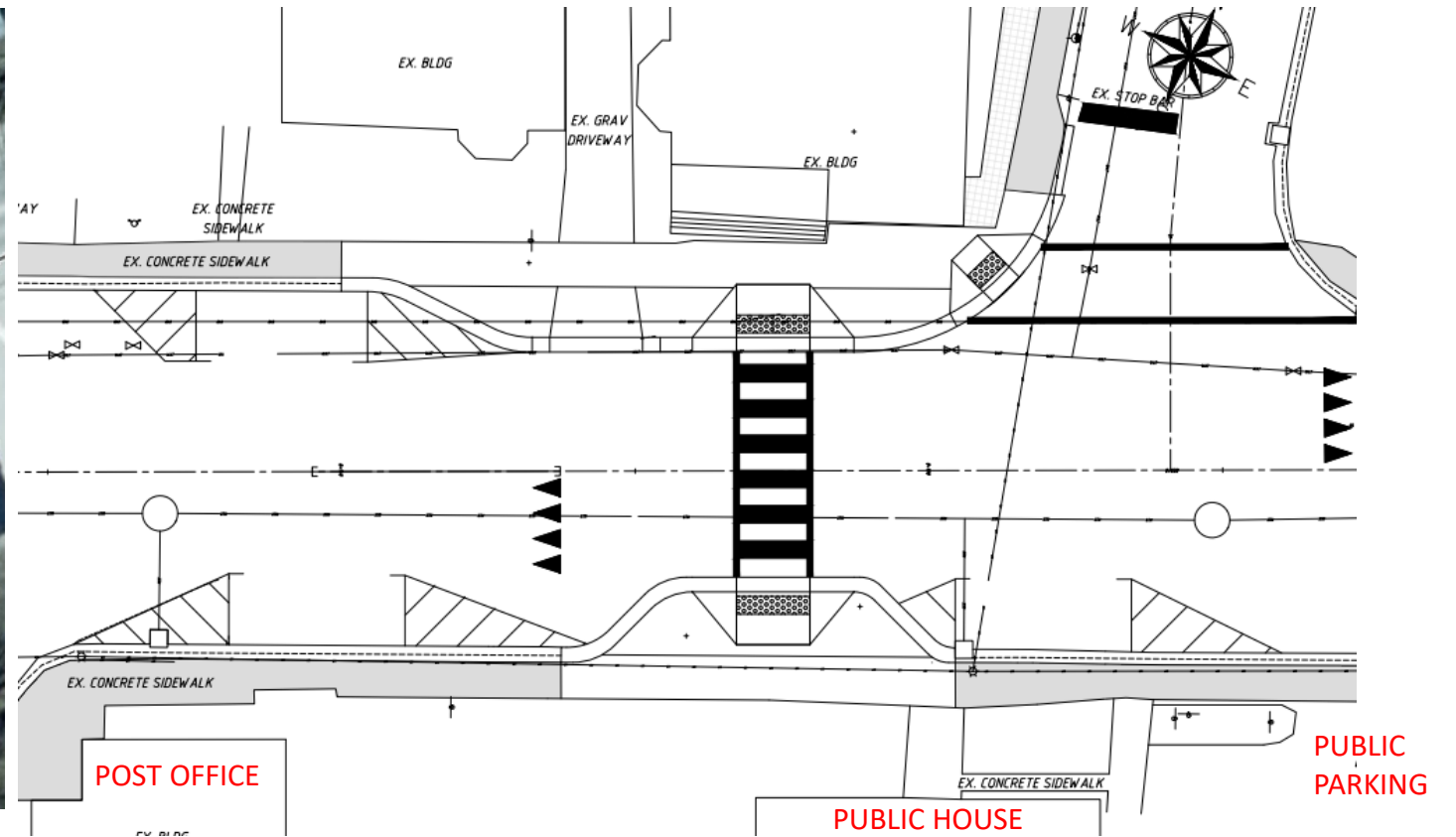
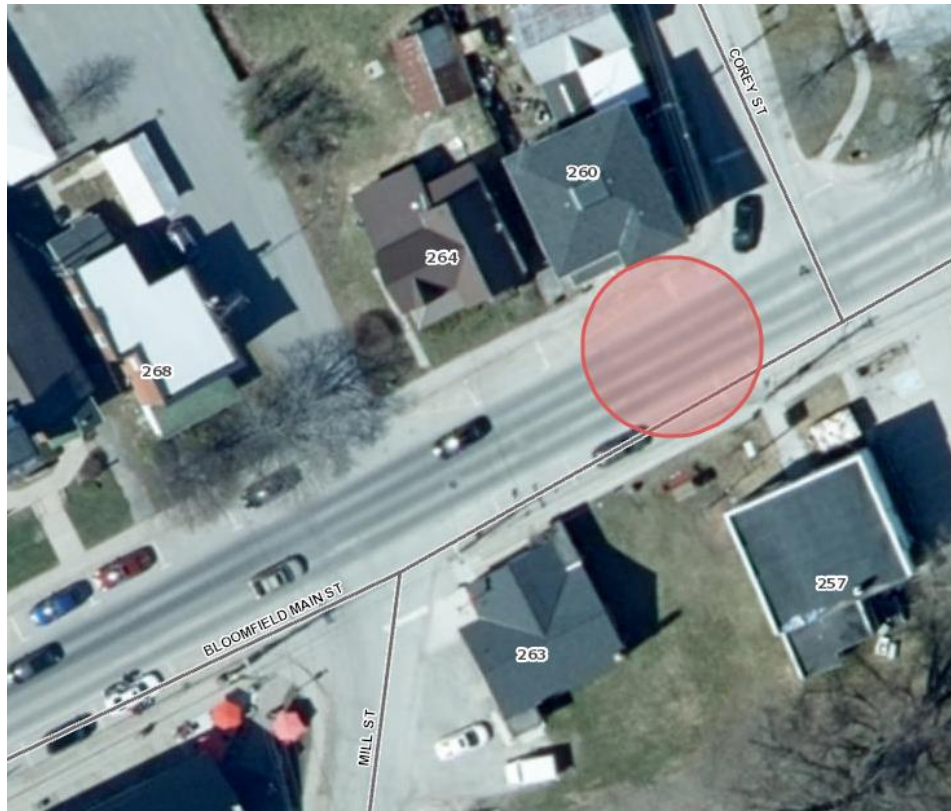
WHAT?



Level 2, Type B PXO

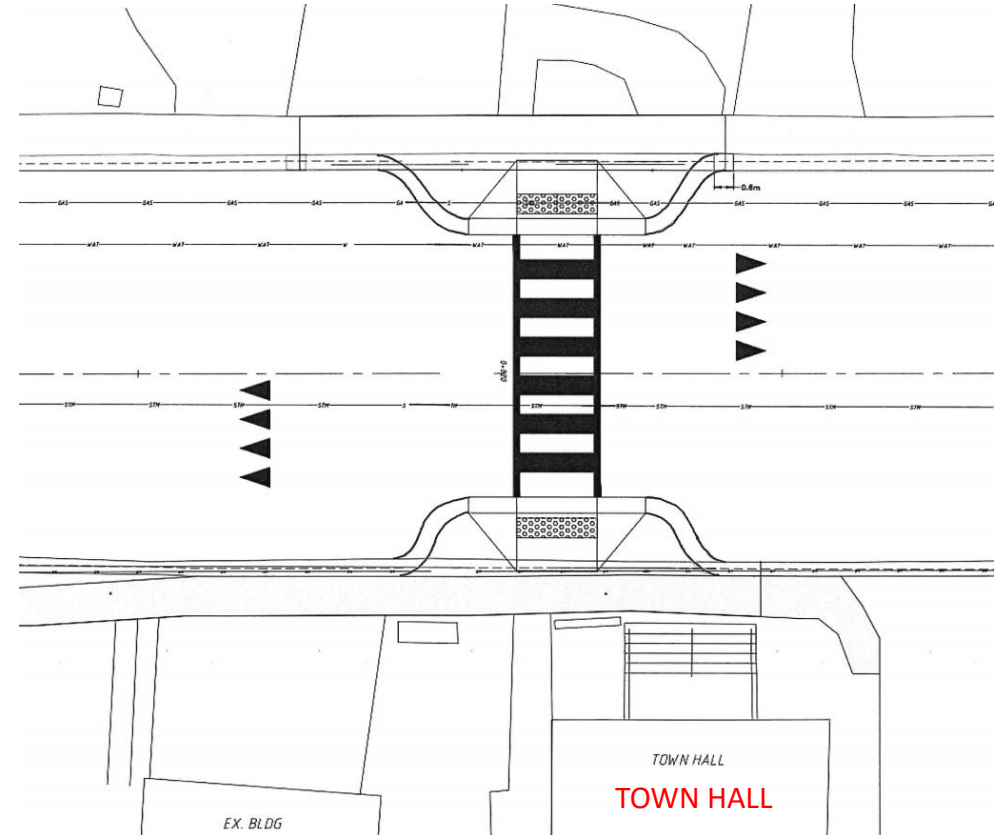
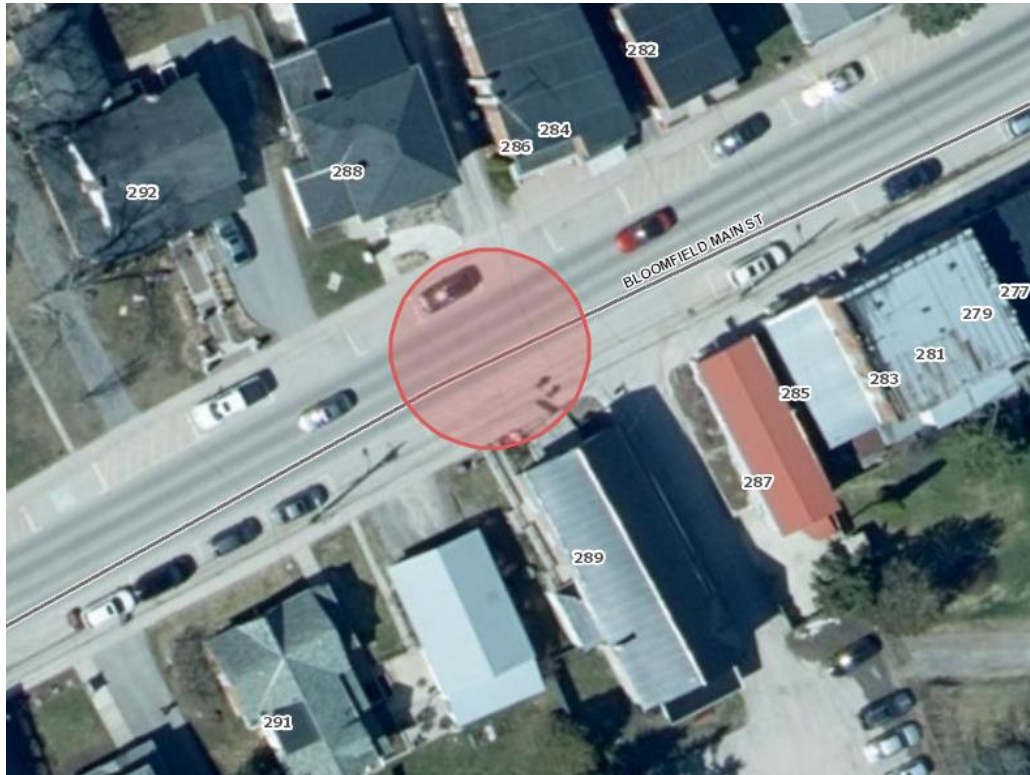
- Pedestrian actuated rapid flashing LED beacons
- Pavement markings
- Regulatory signage
- Consistent with new PXO in Wellington

WHERE?



Location #1 – Bloomfield Post Office adjacent to Corey Street

WHERE?



Location #2 – Bloomfield Town Hall

DESIGN ELEMENTS

Curb Extensions (Bump Out)

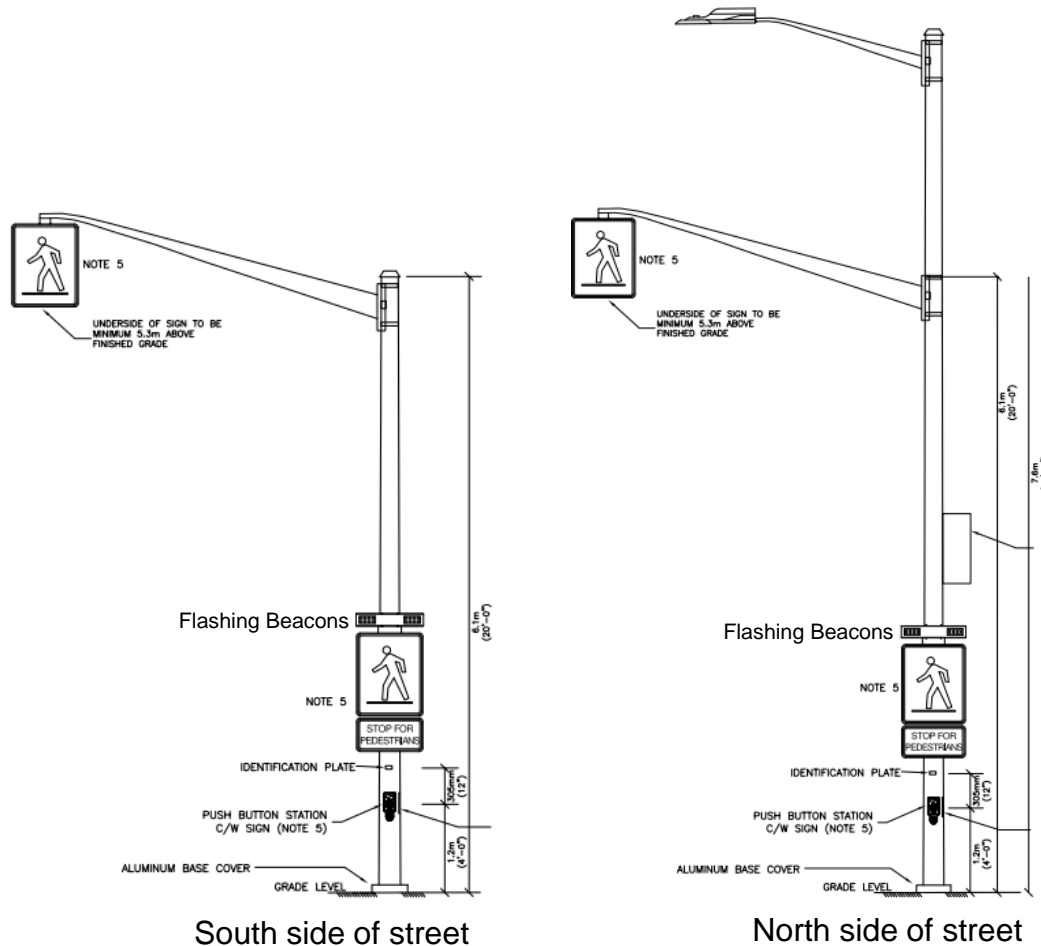


- Improve pedestrian & motorist eye contact
- Shorten crossing distance
- Narrow road width providing traffic calming
- Accommodate AODA ramp and flashing beacon pole assembly
- Area for crossing pedestrian to wait while not obstructing sidewalk flow

DESIGN ELEMENTS

LED Beacons & Illumination

- LED rapid flashing beacons pole mounted on each side of street
- Pedestrian push button to activate flashing beacons
- Overhead illumination of PXO on one side of street only (opposite side of existing street lights)



IMPACT ON STREET PARKING

Location #1 – Bloomfield Post Office

- Loss of 0 existing parking stalls.
- Existing parking stall directly in front of Post Office and directly across street shall remain. Existing stall between Post Office and Public House shall be shifted to the east and located directly in front of Public House.

Location #2 – Bloomfield Town Hall

- Loss of 2 existing parking stalls in front of 288 Main Street (north side of street).
- Loss of Town Hall loading zone (south side of street).

NEXT STEPS

- Staff compile and review all comments received from public regarding proposed PXO and location.

THEN

- Staff make recommendation on proposed PXO and location at **Nov. 23, 2021** Council meeting.

THEN

- If approved by Council, construction to commence in spring of 2022.

QUESTIONS OR COMMENTS?

During PIC:

- Talk with staff
- Complete a comment sheet

Unable to attend PIC:

- Submit comment sheet by email to contact below or hand deliver to Shire Hall (332 Main Street, Picton)
- Call/email contact below to discuss material
- Please submit comments prior to Nov. 11, 2021

Garrett Osborne, Project Manager
Engineering Division, Development Services
613-476-2148 x 2002
gosborne@pecounty.on.ca