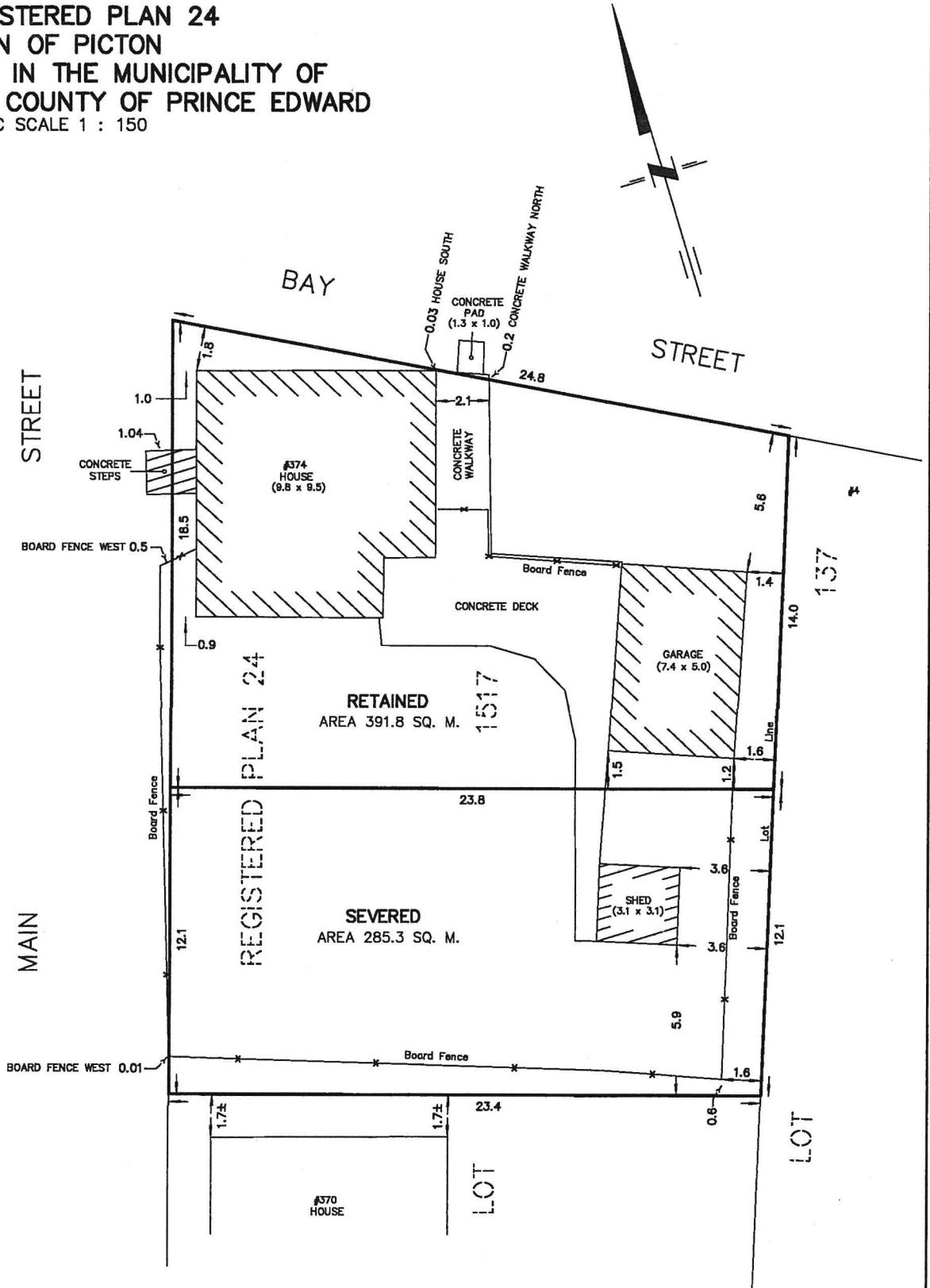


SKETCH for SEVERANCE
 PART OF LOT 1517
 REGISTERED PLAN 24
 TOWN OF PICTON
 NOW IN THE MUNICIPALITY OF
 THE COUNTY OF PRINCE EDWARD
 METRIC SCALE 1 : 150



METRIC :

DISTANCES SHOWN ON THIS PLAN ARE IN METRES
 AND CAN BE CONVERTED TO FEET BY DIVIDING BY 0.3048.

218 CHURCH STREET
 BELLEVILLE, ONTARIO

WATSON
 LAND SURVEYORS Ltd.

KBN - 3C3
 (613) 962 - 9521

JUNE 23, 2021

PROJECT № 12909-H-21