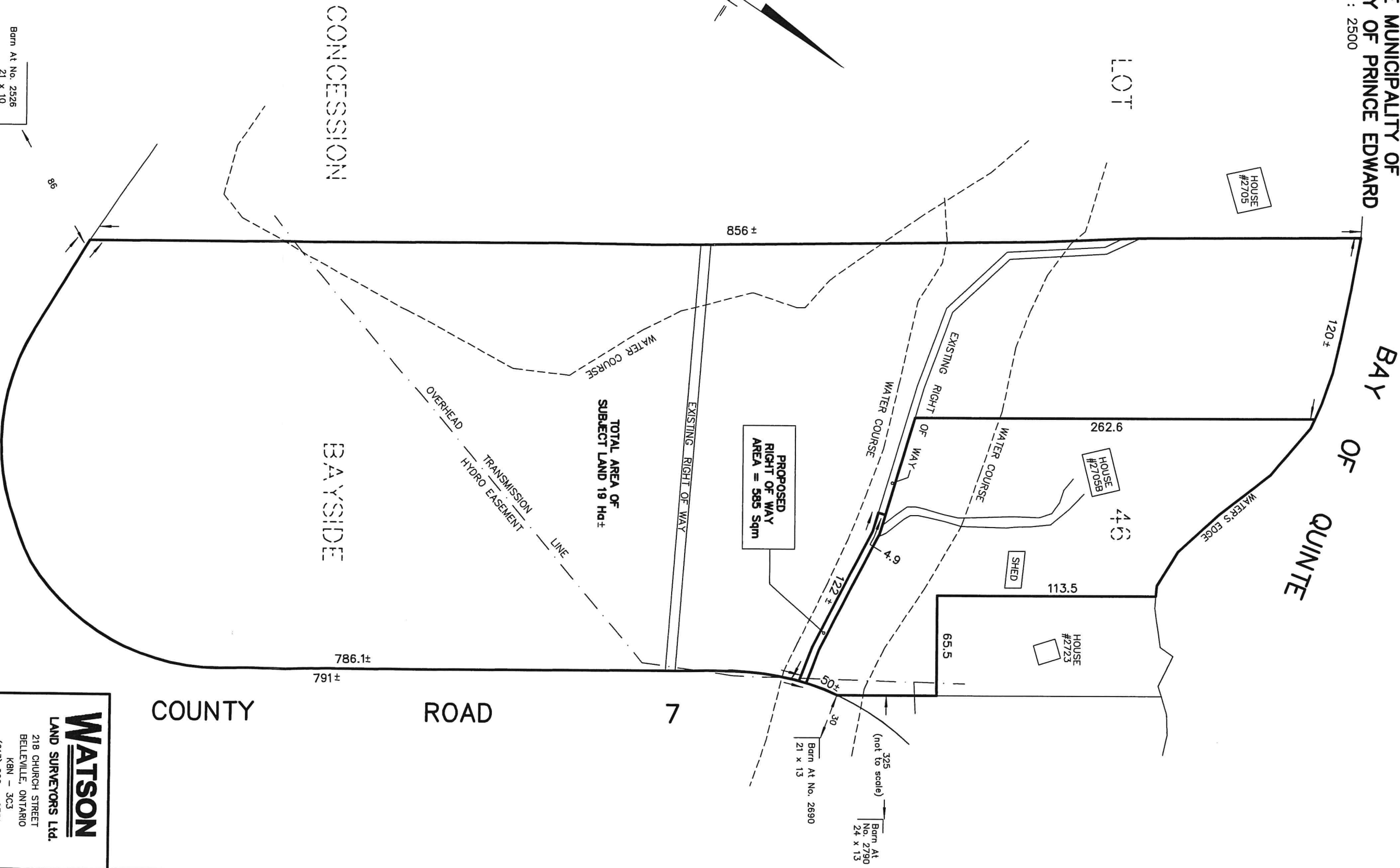
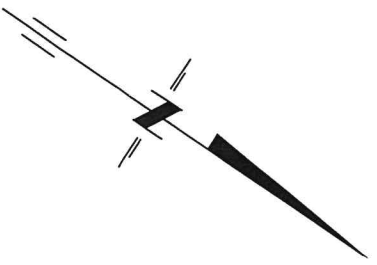


SKETCH
PART OF LOT 46
CONCESSION BAYSIDE
TOWNSHIP OF NORTH MARYSBURGH
NOW IN THE MUNICIPALITY OF
THE COUNTY OF PRINCE EDWARD
 METRIC SCALE 1 : 2500



Barn At No. 2526
21 x 10

WATSON
LAND SURVEYORS Ltd.
 218 CHURCH STREET
 BELLEVILLE, ONTARIO
 K8N - 3C3
 (613) 962 - 9521

APRIL 13, 2021

PROJECT No 12501-M-20