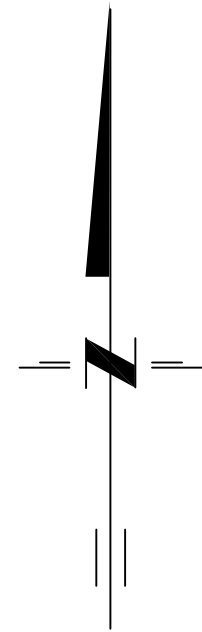


SKETCH
 PART OF LOT 117
 REGISTRAR'S COMPILED PLAN 26
 TOWNSHIP OF HALLOWELL
 NOW IN THE MUNICIPALITY OF
 THE COUNTY OF PRINCE EDWARD

METRIC SCALE 1 : 500



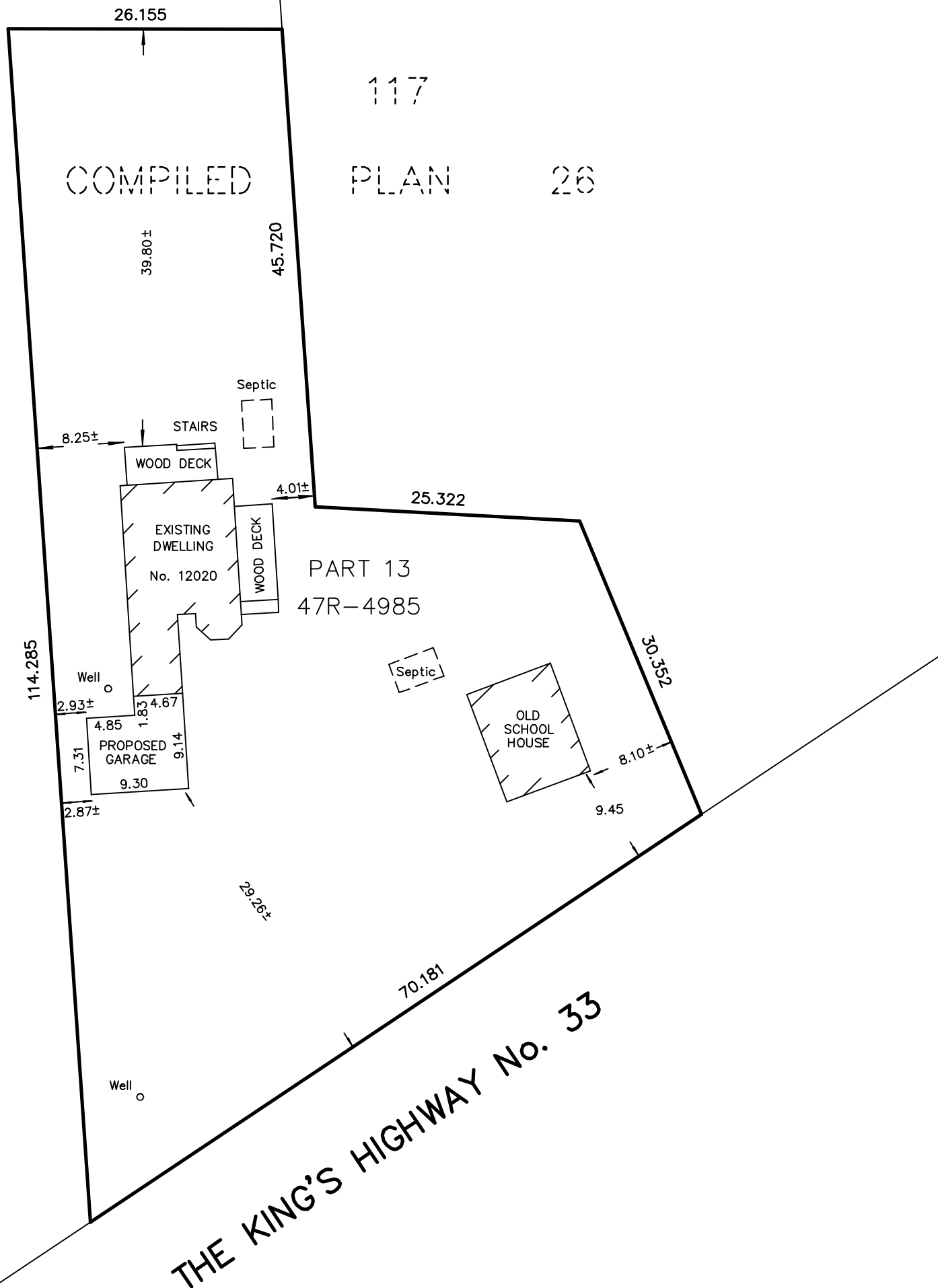
LOT
 REGISTRAR'S

117

COMPILED

PLAN

26



218 CHURCH STREET
 BELLEVILLE, ONTARIO

WATSON
 LAND SURVEYORS Ltd.

K8N - 3C3
 (613) 962 - 9521

DECEMBER 23, 2019

PROJECT No 11479-N-19