

SITE PLAN
SCALE 1 : 300 METRIC

CLIENT
PICTON HARBOUR LOFTS INC.
10 Mortimer STREET
PICTON, ON

COPYRIGHT
This drawing has been prepared solely for the intended use, and any reproduction or distribution for any purpose other than authorized by IBI Group is prohibited. Written dimensions shall have precedence over scaled dimensions. Contractors shall verify and be responsible for all dimensions and conditions on the job, and IBI Group shall be relieved of any liability from the dimensions and conditions shown on the drawing. Shop drawings shall be submitted to IBI Group for general conformance before proceeding with fabrication.
IBI Group Professional Services (Canada) Inc.
is a member of the IBI Group of companies

ISSUES		
No.	DESCRIPTION	DATE
1	ISSUED FOR FIRST SUBMISSION	2021-10-22

NOT FOR CONSTRUCTION

KEY PLAN

CONSULTANTS
LEGEND:
3.45 EX. GROUND ELEVATION
EXISTING CONTOUR (0.15m INTERVALS)
DRAINAGE AREA LABEL
0.75 (0.90) AREA (ha.) RUNOFF COEFFICIENT
EXISTING CATCHMENT AREA

SEAL

PRIME CONSULTANT
IBI GROUP
Suite 200 - 360 James Street North
Hamilton ON L8L 1H5 Canada
tel 905 546 1010 fax 905 546 1011
ibigroup.com

PROJECT
PICTON HARBOUR LOFTS
10 Mortimer Street, Picton

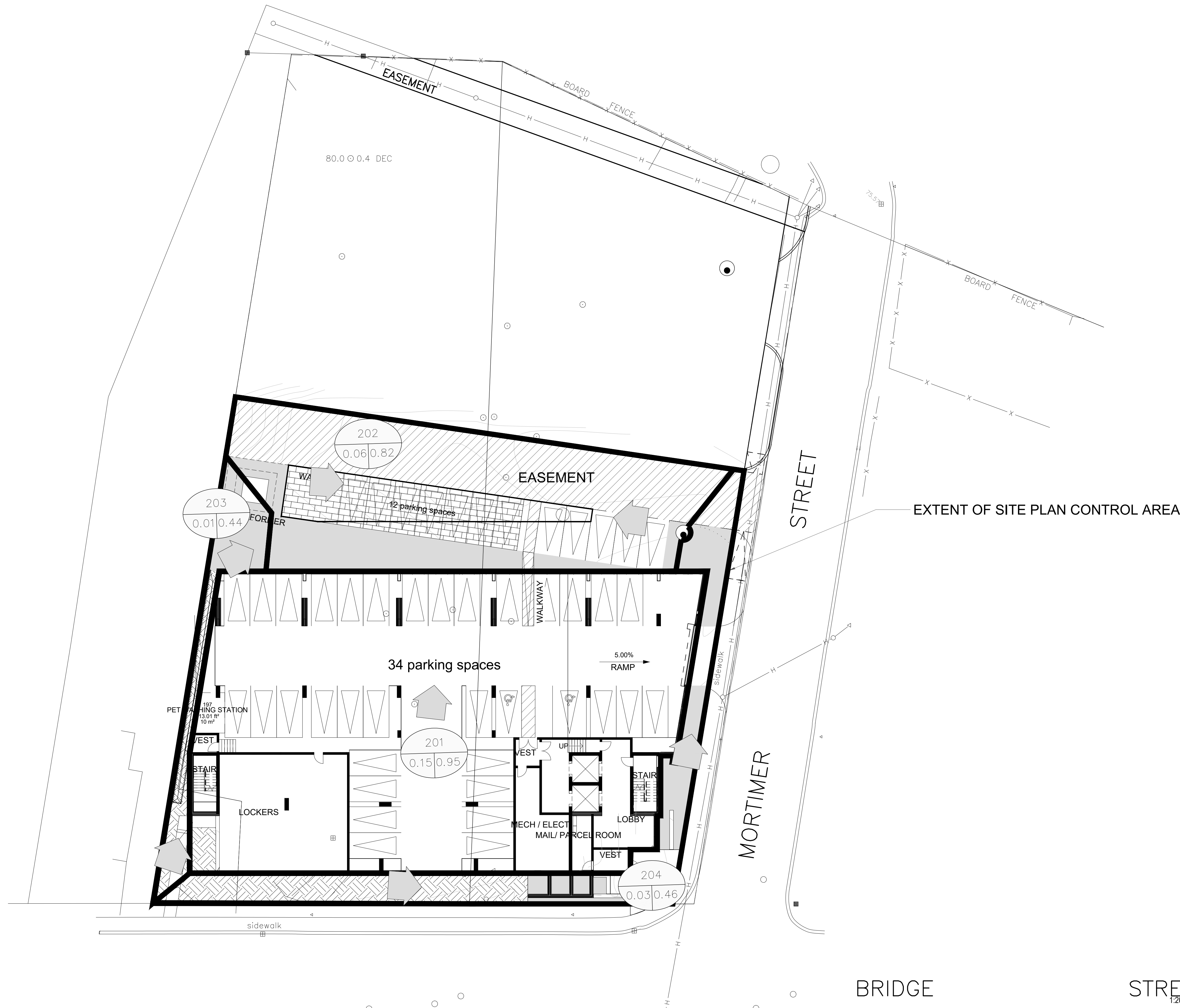
PROJECT NO:
134713
DRAWN BY: J.L.
PROJECT MGR: B.T.

CHECKED BY: B.T.
APPROVED BY:

SHEET TITLE
PRE-DEVELOPMENT DRAINAGE AREAS

SHEET NUMBER
C-300

ISSUE
1



CLIENT
PICTON HARBOUR LOFTS INC.
 10 Mortimer STREET
 PICTON, ON

COPYRIGHT
 This drawing has been prepared solely for the intended use, this any reproduction or distribution for any purpose other than authorized by IBI Group is forbidden. Written dimensions shall have precedence over scaled dimensions. Contractors shall verify and be responsible for all dimensions and conditions on the job, and IBI Group shall be informed of any variations from the dimensions and conditions shown on the drawing. Shop drawings shall be submitted to IBI Group for general concurrence before proceeding with fabrication.
IBI Group Professional Services (Canada) Inc.
 is a member of the IBI Group of companies

ISSUES		
No.	DESCRIPTION	DATE
1	ISSUED FOR FIRST SUBMISSION	2021-10-22

NOT FOR CONSTRUCTION

KEY PLAN

CONSULTANTS

LEGEND:

- 3.45 - EX. GROUND ELEVATION
- EXISTING CONTOUR (0.15m INTERVALS)
- DRAINAGE AREA LABEL
- AREA (ha.)
- RUNOFF COEFFICIENT
- EXISTING CATCHMENT AREA

SEAL

LICENSED PROFESSIONAL ENGINEER
 October 22, 2021
W. L. THOMAS
 100528014
 PROVINCE OF ONTARIO

PRIME CONSULTANT

IBI GROUP
 Suite 200 - 360 James Street North
 Hamilton ON L8L 1H5 Canada
 tel 905 546 1010 fax 905 546 1011
 ibigroup.com

PROJECT
PICTON HARBOUR LOFTS
 10 Mortimer Street, Picton

PROJECT NO:
 134713

DRAWN BY: J.L.	CHECKED BY: B.T.
PROJECT MGR: B.T.	APPROVED BY:

SHEET TITLE
POST-DEVELOPMENT DRAINAGE AREAS

SHEET NUMBER C-301	ISSUE 1
------------------------------	-------------------

File Location: \\canwest.ibigroup.com\jlv\134713_10_Mortimer\7.0_Production\7.0_Production\04_Civil\Sheets\134713_C301_2021_10-14.dwg Last Saved: October 22, 2021 10:30:57 AM by Jasmine LeRoux