

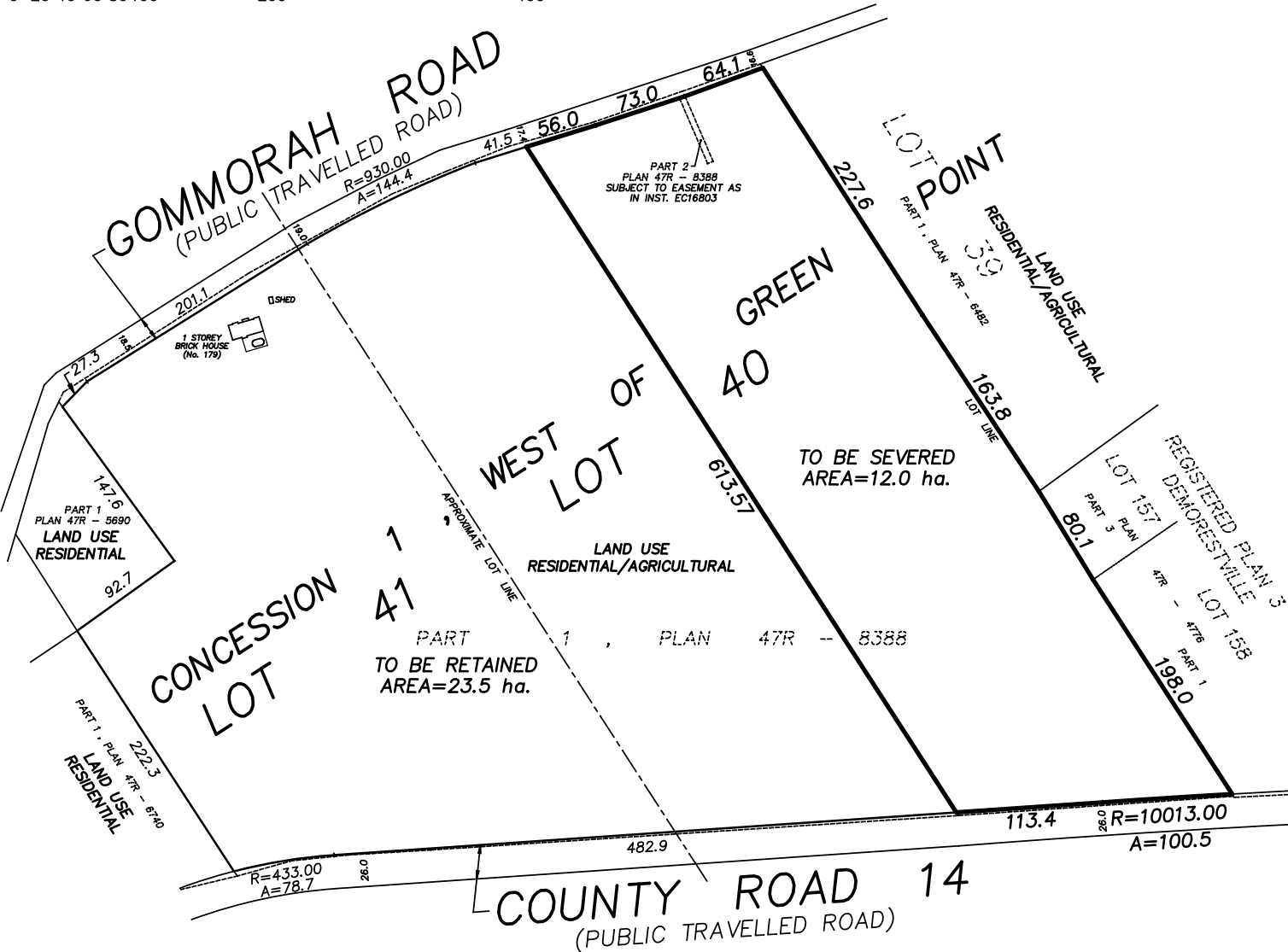
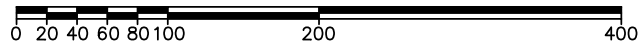
PROPOSED SEVERANCE OF
PART OF LOTS 40 & 41,
CONCESSION 1, WEST OF
GREEN POINT
 GEOGRAPHIC TOWNSHIP OF SOPHIASBURGH
THE MUNICIPALITY OF THE
COUNTY OF PRINCE EDWARD

FRONTAGE

SEVERED
 GOMMORAH ROAD = 193m
 COUNTY ROAD 14 = 214m
 RETAINED
 GOMMORAH ROAD = 412m
 COUNTY ROAD 14 = 561m



SCALE 1 : 5000 METRES



CAUTION

THIS IS NOT A PLAN OF SURVEY AND SHALL NOT BE USED EXCEPT FOR THE PURPOSE INDICATED IN THE TITLE BLOCK.

DISTANCE NOTES – METRIC

DISTANCES ARE IN METRES AND CAN BE CONVERTED TO FEET BY DIVIDING BY 0.3048.
 DISTANCES ARE GROUND AND CAN BE CONVERTED TO GRID BY MULTIPLYING BY THE COMBINED SCALE FACTOR OF 0.999980.



IBWSURVEYORS.COM | 1.800.667.0696

PARTY CHIEF: BK | DRAWN BY: MSJ | CHECKED BY: SC | PLOT DATE: JUNE 24/21
 FILE NAME: A-028126 SKETCHv2 | copies available at LandSurveyRecords.com

rev.	Date	Initials	Imported .txt file	Remarks	rev.	Date	Initials	Imported .txt file	Remarks
1	2021/06/21	MSJ	*	DRAFT LDC SKETCH	3	yyyy.mm.dd	*	*	*
2	2021/06/24	MSJ	*	REVISIONS PER SC	4	yyyy.mm.dd	*	*	*