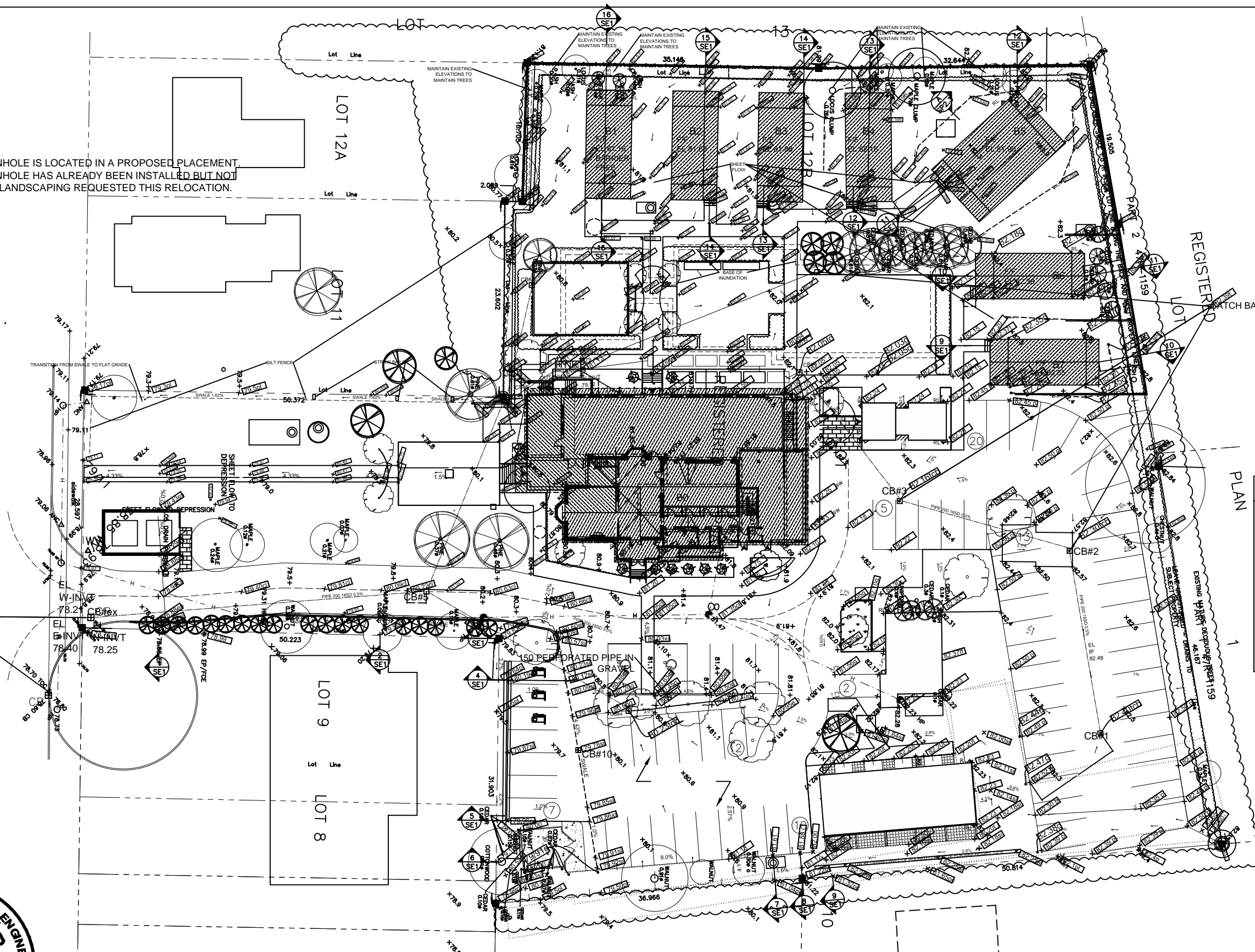


THE SANITARY MANHOLE IS LOCATED IN A PROPOSED PLACEMENT. THE SANITARY MANHOLE HAS ALREADY BEEN INSTALLED BUT NOT IN THIS LOCATION. LANDSCAPING REQUESTED THIS RELOCATION.



CATCH BASIN SCHEDULE

CB ID	ELEV. T/CB	ELEV. I/I	ELEV. I/O	L	S %	ØFC mm
#1	82.40	-	81.90	21.7	0.5	
#2	82.30	81.79	81.74	21.0	0.5	
#3	82.16	81.63	81.58	19.2	4.2	
#4	80.23	79.60	79.60	27.8	1.0	
#10	79.96	-	79.66	6.1	1.0	
#5	80.31	79.32	79.27	39.9	1.0	
EX	78.72	78.21	-	-	-	
#6	82.05	81.39	80.82	1.1	0.5	95
CLTC	82.05	80.77	80.77	-	-	
#7	80.81	-	80.46	30.3	0.5	32
ITNK	81.13	80.26	80.21	6.6	1.2	
#8	80.60	-	80.25	13.6	0.5	
#9	80.44	80.18	80.13	24.5	0.5	
#5	81.00	80.01	79.42	39.9	1.0	

CB ID IDENTIFICATION OF CATCH BASIN
 ELEV. ELEVATION IN METRES
 T/CB TOP OF CATCHBASIN
 I/I INVERT OF ENTERING PIPE
 I/O INVERT OF EXITING PIPE
 L LENGTH IN METRES LEAVING CB
 S SLOPE IN % OF L
 EX EXISTING CB
 CLTC CULTEC SYSTEM OF CHAMBERS
 ITNK IRRIGATION STORAGE TANK
 1000 gal 3.07x1.96x1.40, INLET
 INVERT 0.3DOWN FROM TOP
 TK DOWN 0.57m, EL 80.56
 ØFC ORIFICE DIAMETER IN mm

SEE STORMWATER MANAGEMENT REPORT AND NOTES ON SP2.1

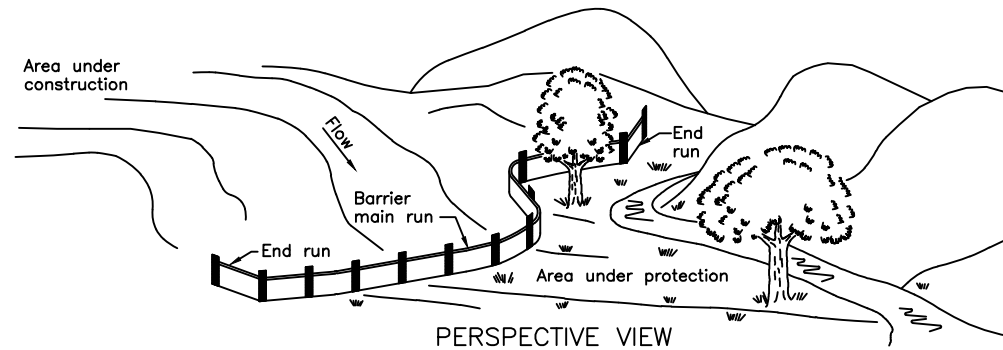


FIND SECTION	ON SHEET	FIND SECTION	ON SHEET
1/SEC1	SP2.4	10/SEC1	SP2.3
2/SEC1	SP2.5	11/SEC1	SP2.3
3/SEC1	SP2.6	12/SEC1	SP2.3
4/SEC1	SP2.6	13/SEC1	SP2.2
5/SEC1	SP2.7	14/SEC1	SP2.2
6/SEC1	SP2.7	15/SEC1	SP2.2
7/SEC1	SP2.8	16/SEC1	SP2.2
8/SEC1	SP2.8		
9/SEC1	SP2.8		

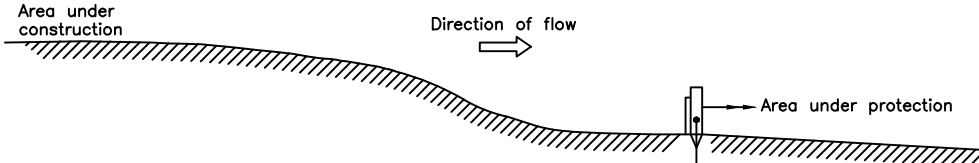
HAMBLY GROUP DIVISION OF 8436550 CANADA CORPORATION 1104 Cedarwoods Dr., Verona ONTARIO K0H 2W0 TEL 613 374 1746 CEL 613 536 8193 FAX 613 536 9118		WELLINGTON HOTEL SITE PLAN - STORMWATER MANAGEMENT 192 Main Street, Wellington, Ontario	
SIZE	FSCM NO.	DWG NO.	REV
		SP2.0	

NOTES CONTINUE

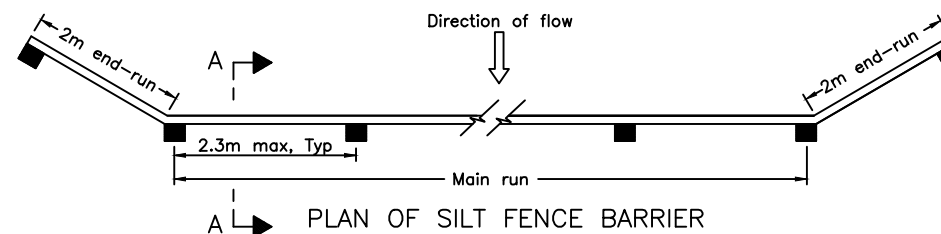
1. SANITARY SERVICE LATERAL 125 DR PIPE FROM 250 mm SANITARY MAIN IN MAIN ST. TO A 1200 mm SANITARY MANHOLE OSPD STANDARD DESIGN WITH A 0.7% SLOPE TO THE MUNICIPAL PIPE CONNECTION FROM THE MANHOLE. MANHOLE TO HAVE A SOLID CASE IRON COVER. ALL LATERALS FROM PROJECT BUILDINGS WILL BE 100 mm PVC PIPES TO THE MANHOLE.
2. WATER SERVICE MAIN IS 100 mm PRESSURE PVC PIPE FROM 200 mm MAIN IN THE STREET TO THE FRONT OF THE MAIN BUILDING WHERE IT WILL ENTER BASEMENT TO HAVE THE METERED. INSTALLED.
3. A MAIN WATER SERVICE CUT-OFF VALVE IS TO BE INSTALLED JUST INSIDE THE PROPERTY LINE NEAR THE ROAD.
4. ELECTRICAL SERVICE WILL BE BURIED FROM THE HYDRO POLE TO A TRANSFORMER PAD WHERE THE POWER IS REDUCED TO 600 amp 120/208 v, 3-PHASE. THIS POWER IS RUN TO THE ELECTRICAL VAULT IN THE FRONT YARD, TO BE LOCATED BY HYDRO ONE. FEED ENTERS THE MAIN BUILDING NEAR THE NORTH END OF THE WEST WALL. RUNNING INTO THE ELECTRICAL ROOM AT THE NORTH END OF THE BUILDING WHERE IT WILL BE METERED AGAIN AND SPLIT TO OTHER BUILDINGS ON THE PROPERTY. FEEDS WILL ALSO RUN TO FOUR OTHER BUILDINGS: THE 'CHALET SUITE', THE ANNEX, THE YOGA SUITE AND THE SEASON BUILDING.
5. CATCH BASIN GRATE TO BE ADJUSTED WITH MANUFACTURER'S COLLARS TO SAME ELEVATION AS FINISHED PAVEMENT. ALL CATCH BASIN GRATES TO BE PROTECTED FROM SEDIMENT INFILTRATION DURING CONSTRUCTION WITH GEOFABRIC. FABRIC TO HAVE AT LEAST 75 mm LAP ON UNDER SIDE OF GRATE TO MAINTAIN FULL COVERAGE OF THE GRATE. CATCH BASIN SUMP TO BE CLEANED PRIOR TO COVER AND AGAIN AFTER COVER IS REMOVED. COVER IS TO BE INSTALLED PRIOR TO CONSTRUCTION AND LEFT IN INSTALLED UNTIL VEGETATION IS RE-ESTABLISHED.
6. CONTRACTOR TO CONSULT WITH ARBORIST NOTES REGARDING THE CONSTRUCTION OF THE WOOD FENCE AND SWALES. FENCE MAY BE INTERRUPTED AT MATURE TREES. SWALES MAY BE CONSTRUCTED INSIDE THE TREES TO AVOID DAMAGE. OTHER CONFLICTS TO BE BROUGHT TO THE ATTENTION OF THE ENGINEER.
7. DRAWING INDICATES A WATER METER CHAMBER. BUT UNTIL THE TOWN PROVIDES THE 'STANDARD' FOR REVIEW, THE OWNER IS NOT PERMITTED TO GIVE A 'BLANK' APPROVAL FOR THE WATER METER CHAMBER. SHOULD THIS CHAMBER BE INSTALLED, THERE WILL BE TWO BACK FLOW PREVENTERS INSTALLED WITH THE METER.
8. WATER SERVICE LATERAL AND THE FIRE SERVICE LATERAL IS TO HAVE A 14 ga TW SOLID COPPER COATED WIRE ATTACHED TO THE TOP SIDE OF THE PIPE. AS PER OBC12 7.2.11.3.
9. CONTRACTOR TO REVIEW THE LANDSCAPING DRAWINGS. THE GRADING ALONG THE WEST AND NORTH PROPERTY LINES IS LIMITED TO MAINTAIN THE EXISTING 'SUITABLE' TREES. THE SUITABLE TREES ARE IDENTIFIED ON THE LANDSCAPING PLANS. INSIDE THE TREES (AND ROOT SYSTEM) GRADES MAY BE ACHIEVED AS PER THE STORMWATER PLAN. THE CONTRACTOR SHALL IDENTIFY ANY CONFLICTS WITH THE ENGINEER FOR RESOLUTION.



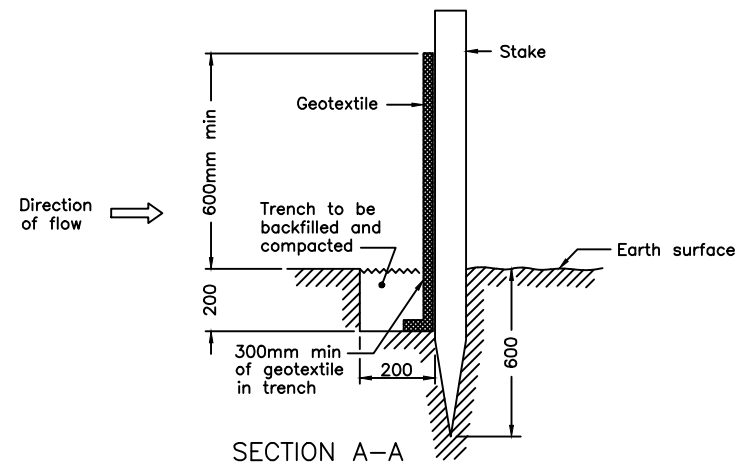
PERSPECTIVE VIEW



SECTION VIEW



PLAN OF SILT FENCE BARRIER

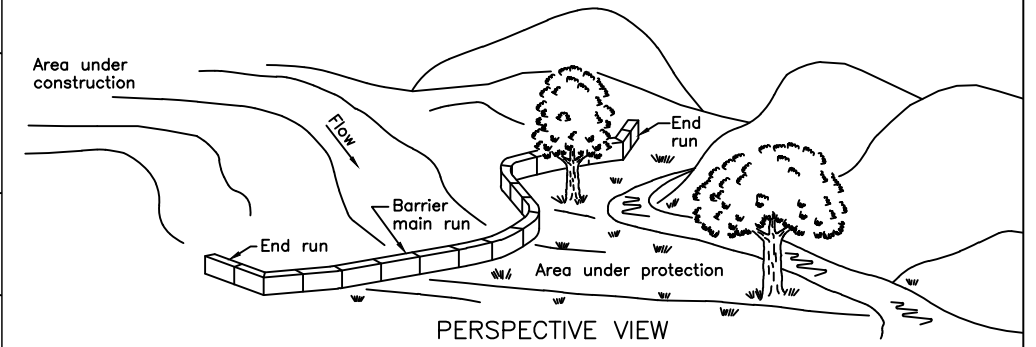


SECTION A-A

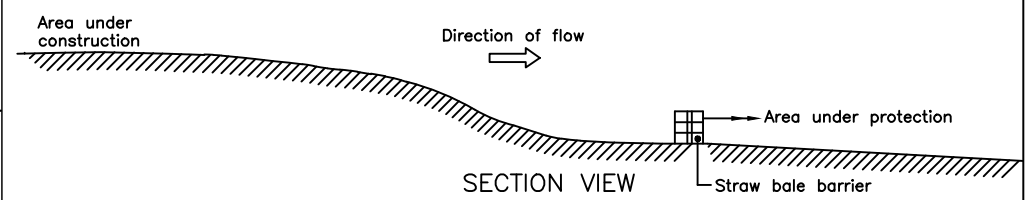
NOTE:

A All dimensions are in millimetres or metres unless otherwise shown.

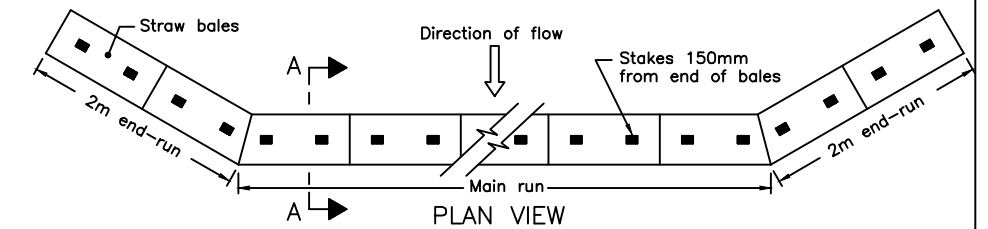
**LIGHT DUTY
SILT FENCE BARRIER**
OPSD - 219.110



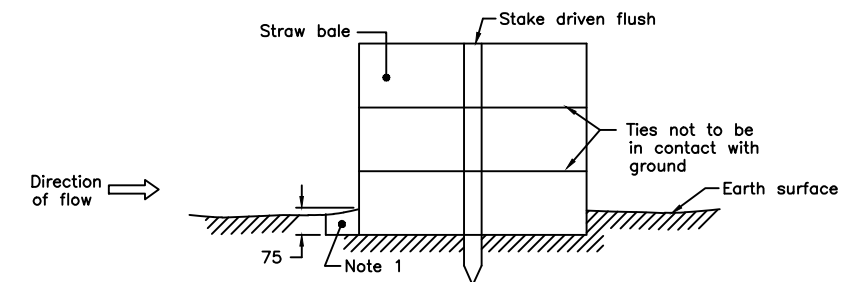
PERSPECTIVE VIEW



SECTION VIEW



PLAN VIEW



SECTION A-A

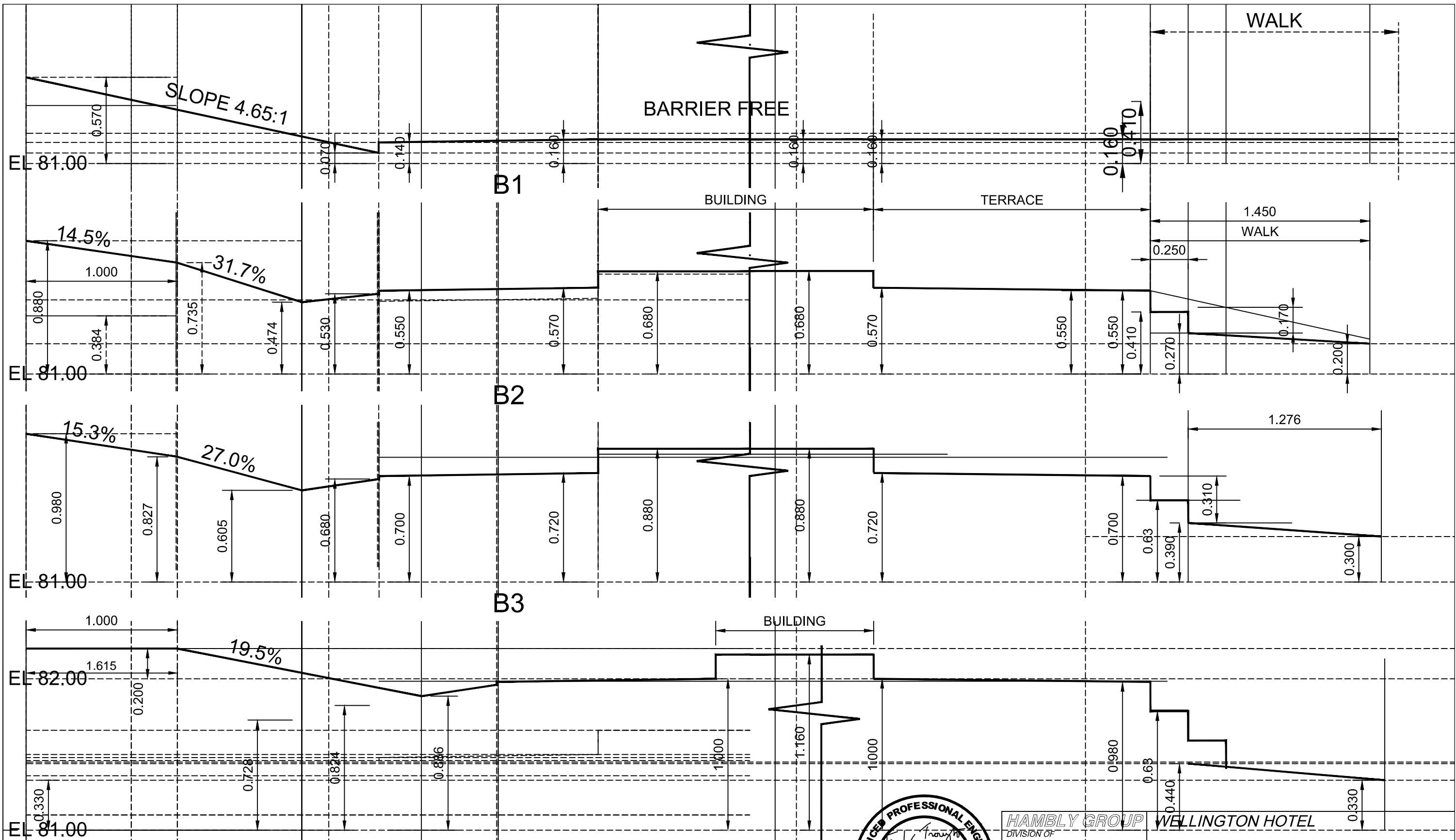
NOTES:

- 1 Balance of excavated trench to be backfilled following bale placement.
- A All dimensions are in millimetres or metres unless otherwise shown.

**LIGHT DUTY
STRAW BALE BARRIER** OPSD - 219.100

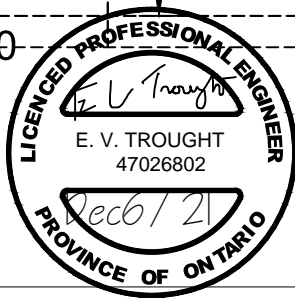
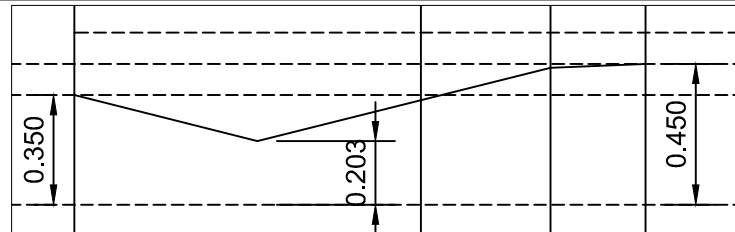
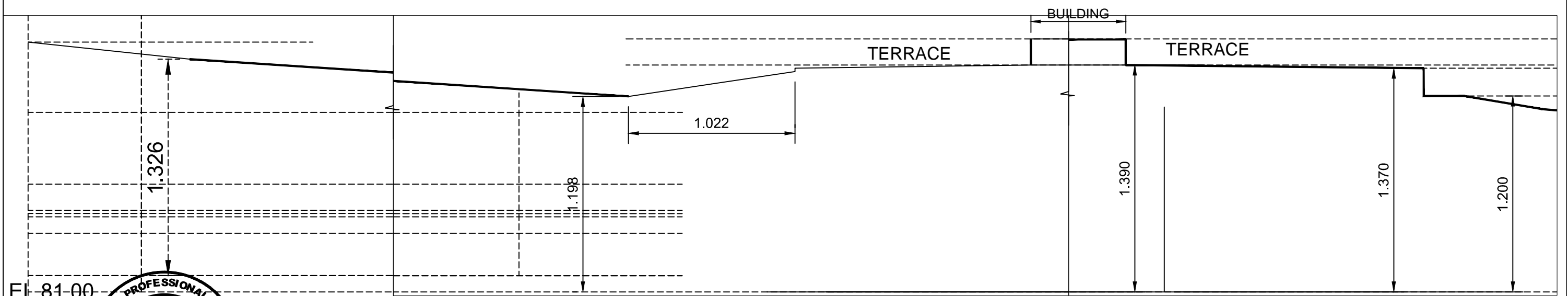
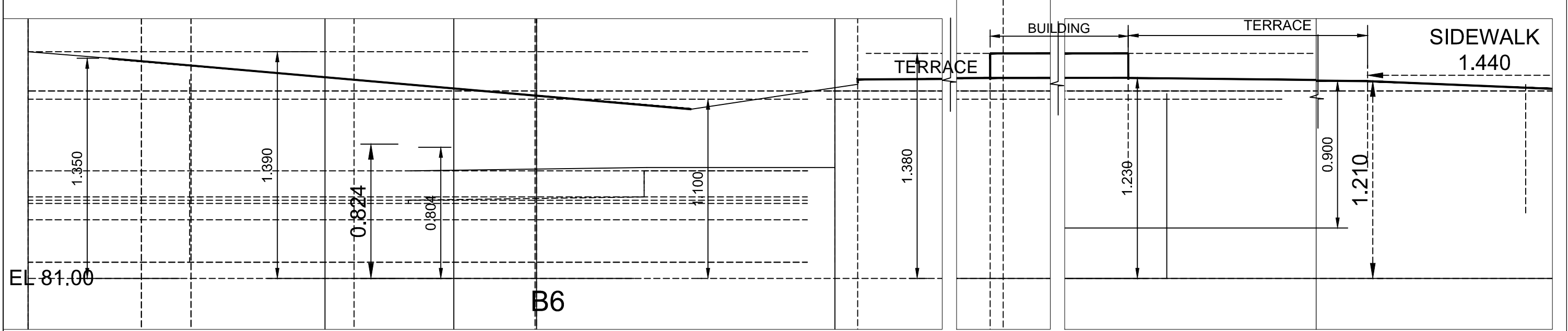
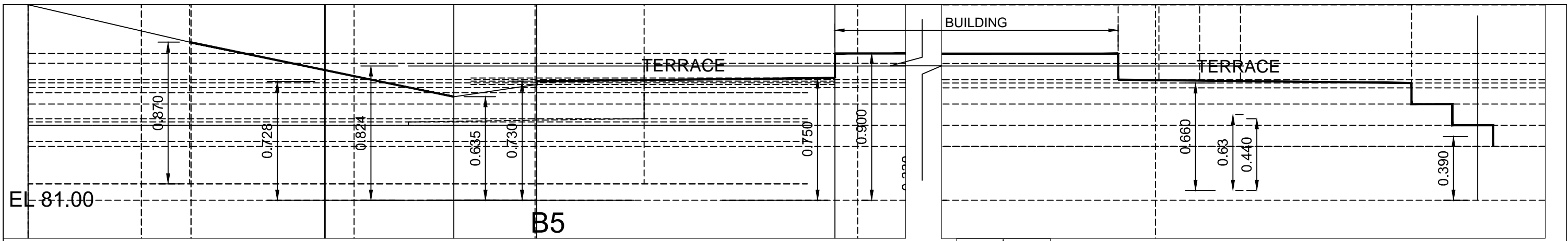


HAMBLY GROUP		WELLINGTON HOTEL	
DIVISION OF 8436550 CANADA CORPORATION		SITE PLAN - SITE NOTES	
1104 Cedarwoods Dr., Verona, ONTARIO K0H 2W0		192 Main Street, Wellington, Ontario	
TEL 613 374 1746 CEL 613 536 8193 FAX 613 536 9118	SIZE	FSCM NO.	DWG NO. SP2.1
SCALE NTS	2021-11-22		SHEET 1

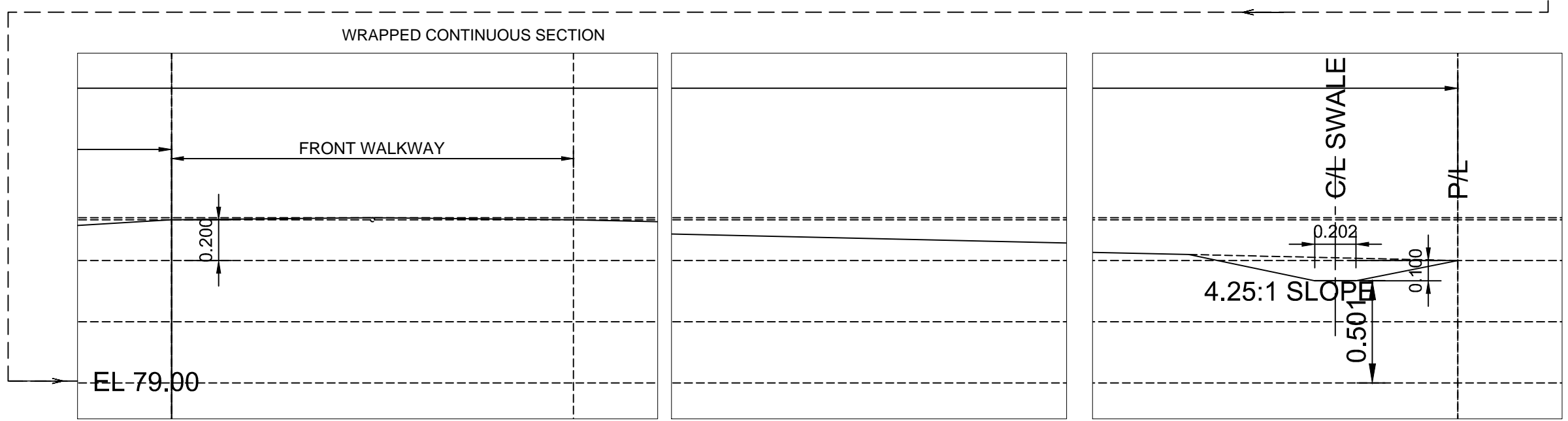
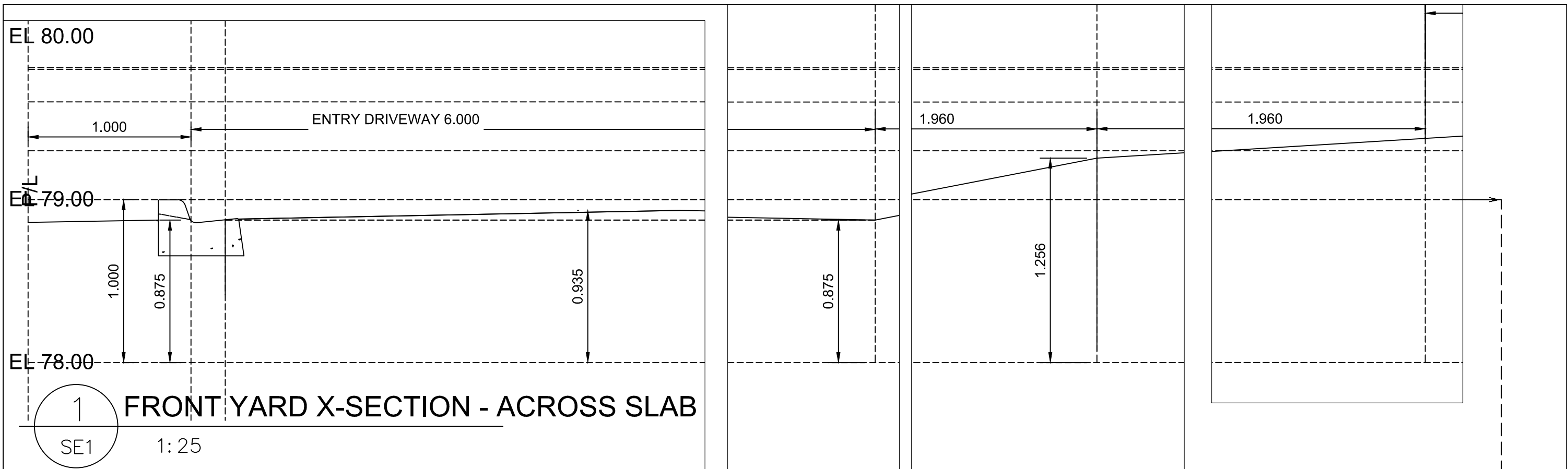


HAMBLY GROUP
 DIVISION OF
 8436550 CANADA CORPORATION
 1104 Cedarwoods Dr.,
 Verona,
 ONTARIO
 K0H 2W0
 TEL 613 374 1746
 CEL 613 536 8193
 FAX 613 536 9118

WELLINGTON HOTEL			
SECTIONS GARDEN SUITES 1, 2, 3 & 4			
192 Main Street, Wellington, Ontario			
SIZE	FSCM NO.	DWG NO.	REV
		SP2.2	
SCALE 1:25	2021-11-22	SHEET 1	



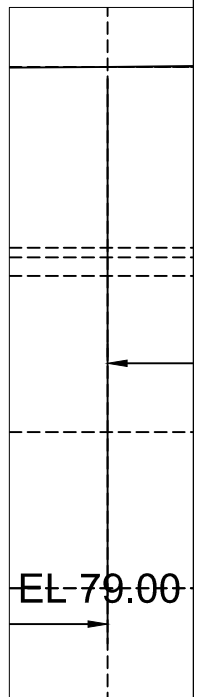
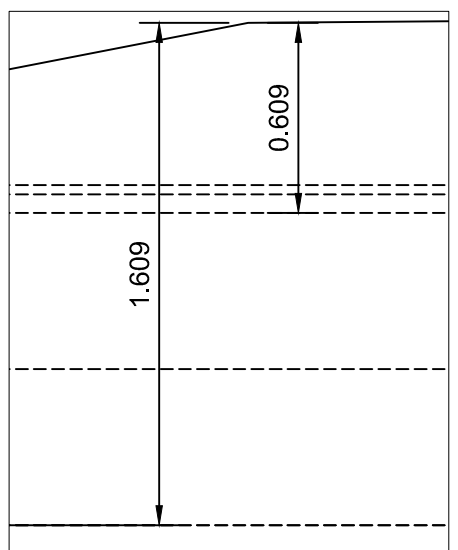
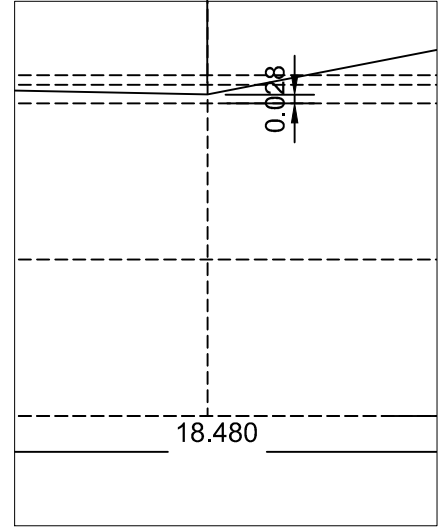
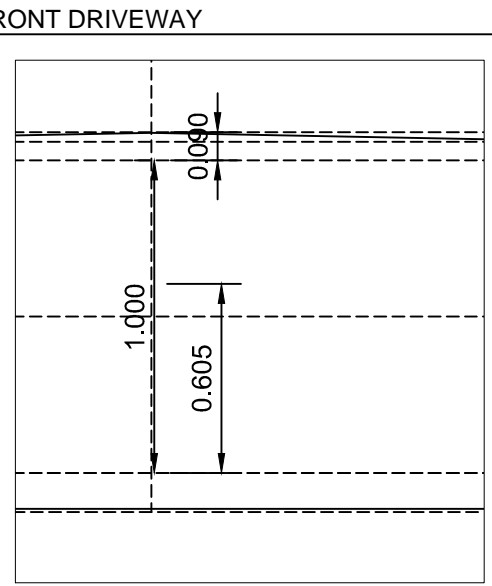
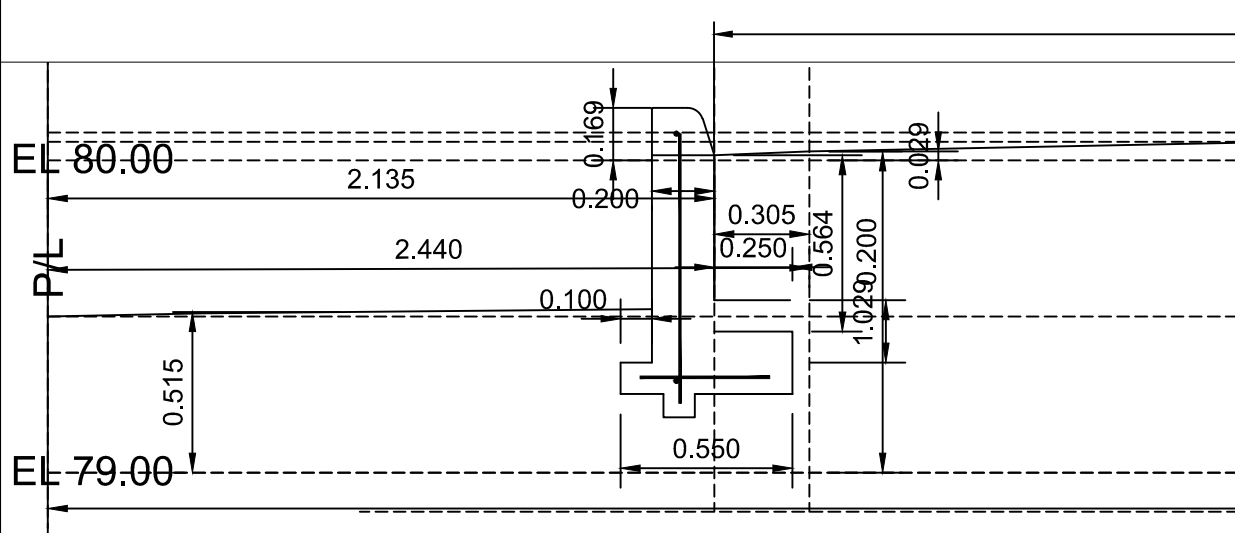
HAMBLY GROUP		WELLINGTON HOTEL	
DIVISION OF 8436550 CANADA CORPORATION		SECTIONS GARDEN SUITES 5, 6 & 7	
1104 Cedarwoods Dr., Verona, ONTARIO K0H 2W0		192 Main Street, Wellington, Ontario	
TEL 613 374 1746 CEL 613 536 8193 FAX 613 536 9118	SIZE	FSCM NO.	DWG NO. SP2.3
	SCALE 1:25	2021-11-22	SHEET 1



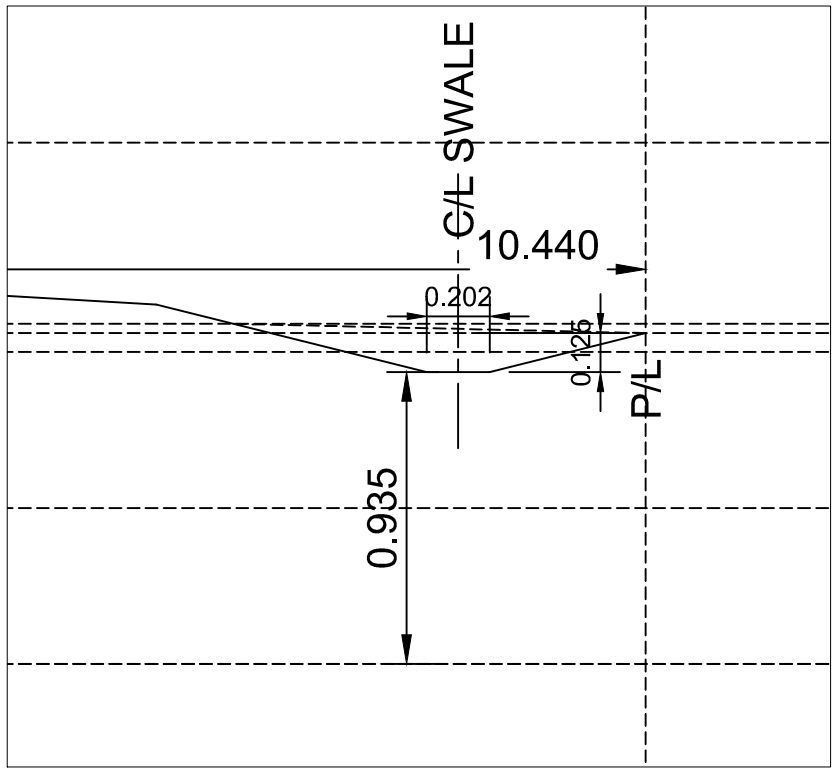
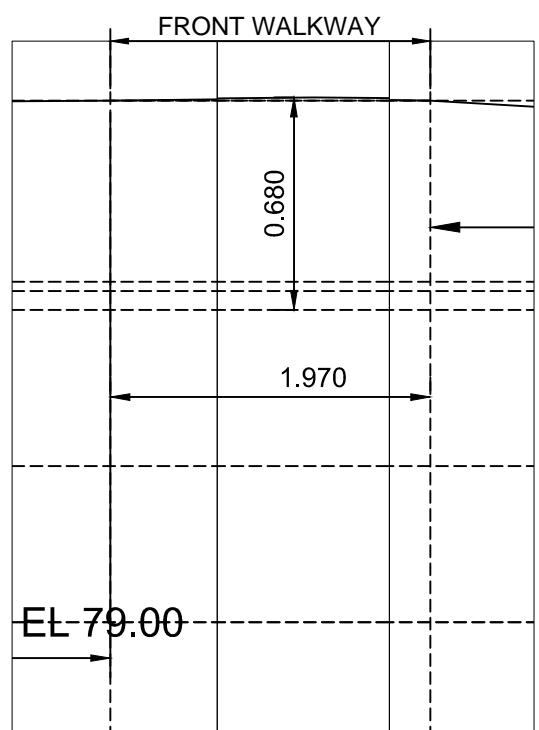
CURB DETAIL SHOWN ON D1.2



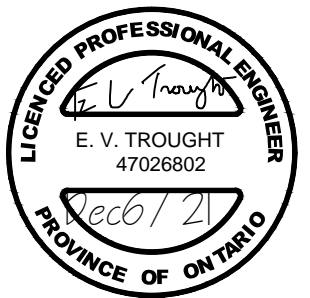
HAMBLY GROUP		WELLINGTON HOTEL	
DIVISION OF 8436550 CANADA CORPORATION		SECTIONS X-SECTION 1/SE1	
1104 Cedarwoods Dr., Verona, ONTARIO K0H 2W0		192 Main Street, Wellington, Ontario	
TEL 613 374 1746 CEL 613 536 8193 FAX 613 536 9118	SIZE	FSCM NO.	DWG NO. SP2.4
	SCALE 1:25	2021-11-22	SHEET 1



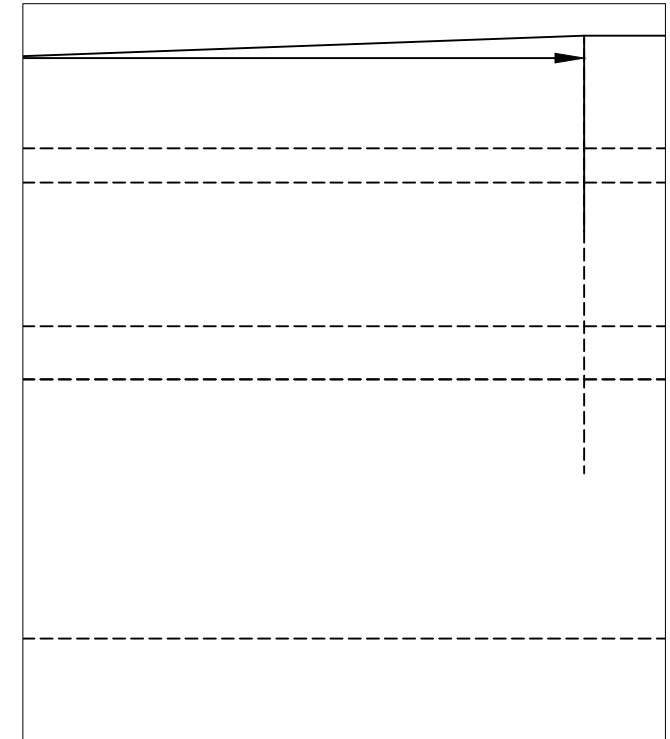
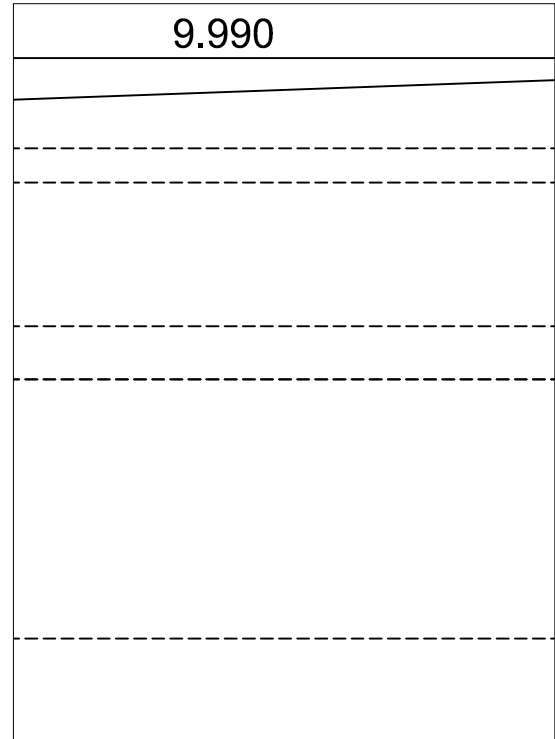
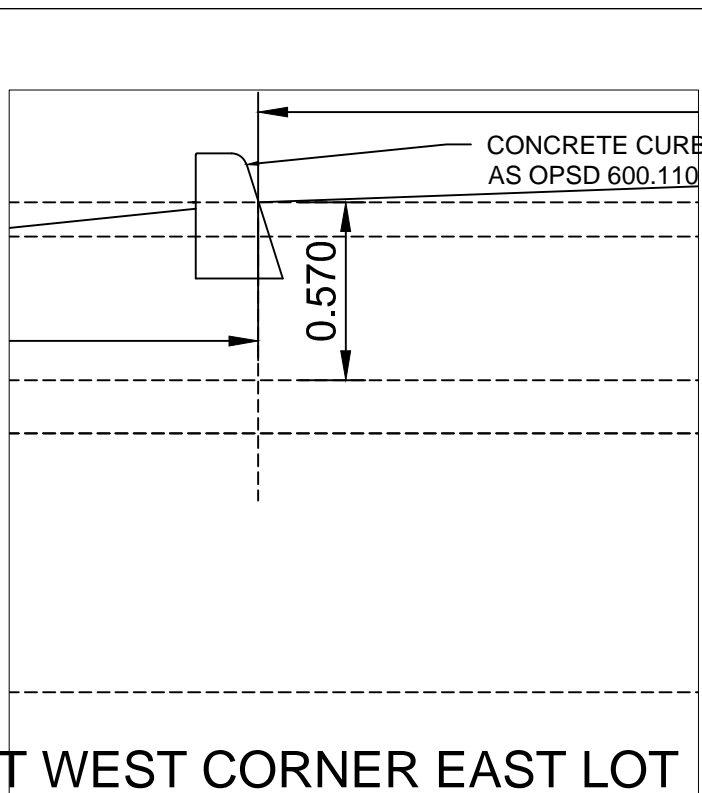
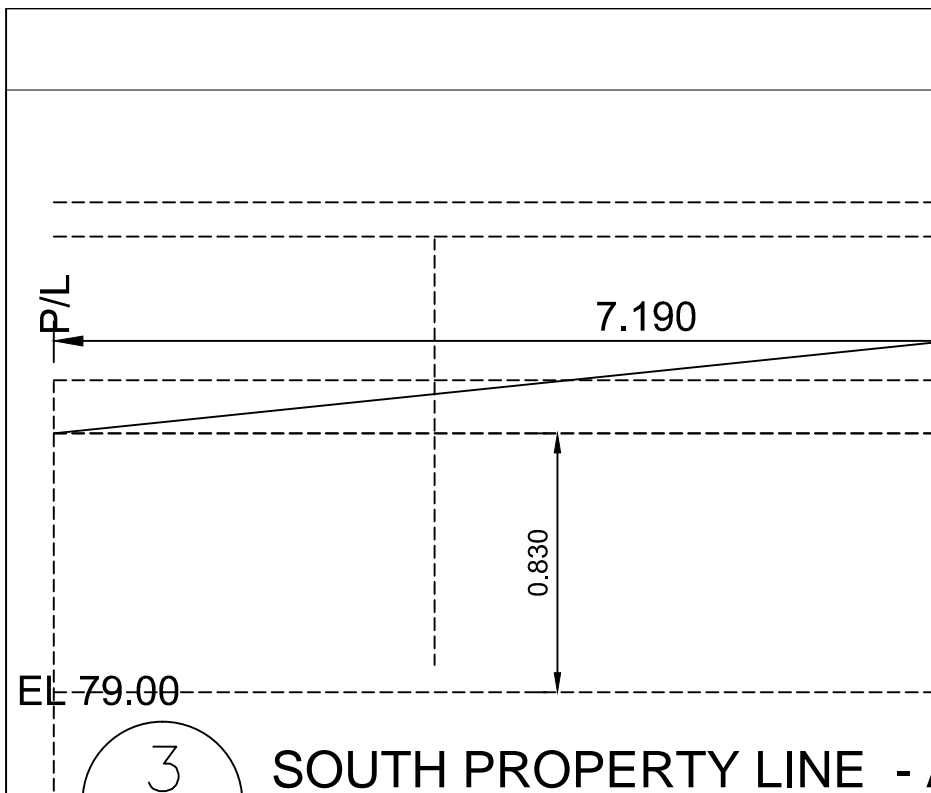
2 FRONT YARD X-SECTION - NORTH
SE1 1:25



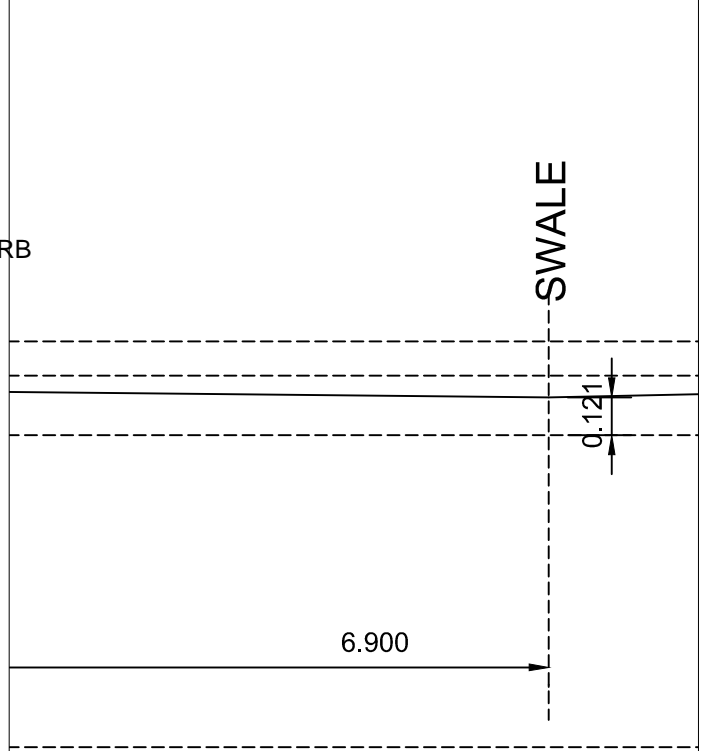
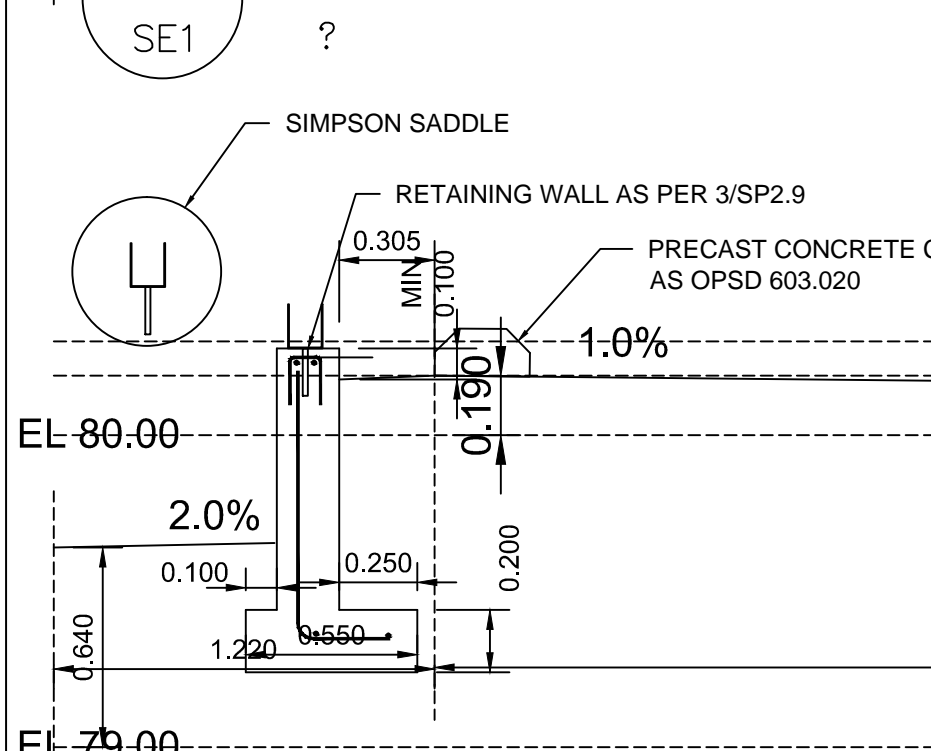
THE BERM ALONG THE WEST PROPERTY LINE MAY BE REPLACE WITH A LOW BERM [OF H=150-200 mm WITH SLOPES OF 4:1 ON BOTH SIDES TO EXITING ELEVATION THE PROPERTY LINE. RETAINING WALL DETAIL ON SP2.9



HAMBLY GROUP		WELLINGTON HOTEL	
DIVISION OF 8436550 CANADA CORPORATION		SECTIONS X-SECTION 2/SE1	
1104 Cedarwoods Dr., Verona, ONTARIO K0H 2W0		192 Main Street, Wellington, Ontario	
TEL 613 374 1746 CEL 613 536 8193 FAX 613 536 9118	SIZE	FSCM NO.	DWG NO. SP2.5
SCALE 1:25	2021-11-22	SHEET 1	



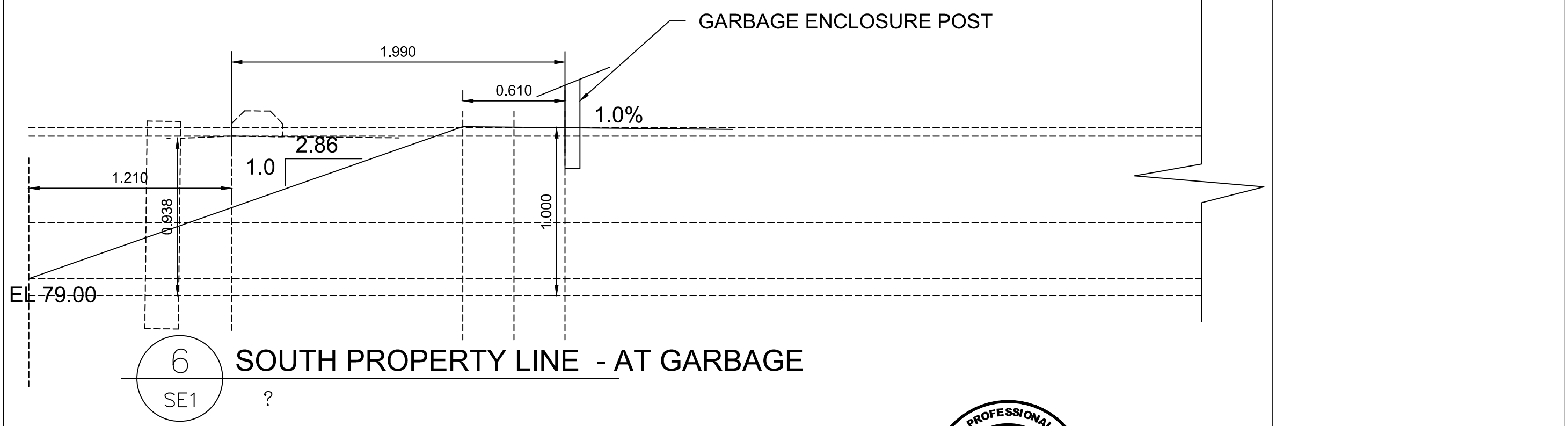
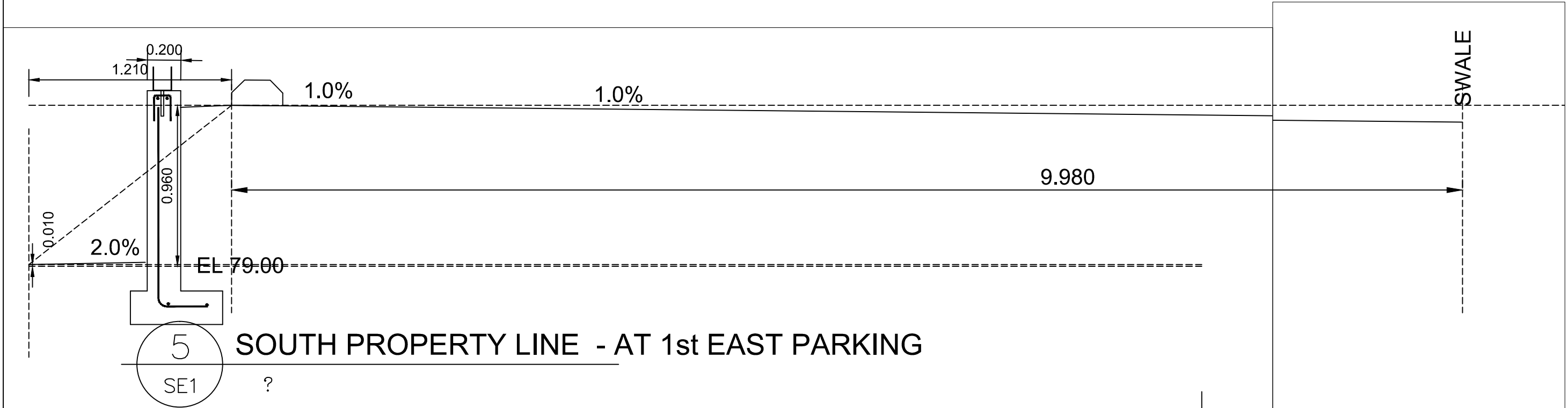
EL 79.00
 3
 SE1 ?
SOUTH PROPERTY LINE - AT WEST CORNER EAST LOT



EL 80.00
 4
 SE1 ?
SOUTH PROPERTY LINE - AT 1st PARKING WEST



HAMBLY GROUP		WELLINGTON HOTEL	
DIVISION OF 8436550 CANADA CORPORATION			
1104 Cedarwoods Dr., Verona, ONTARIO K0H 2W0			
TEL 613 374 1746 CEL 613 536 8193 FAX 613 536 9118			
SIZE	FSCM NO.	DWG NO. SP2.6	REV
SCALE 1:25	2021-11-22	SHEET 1	

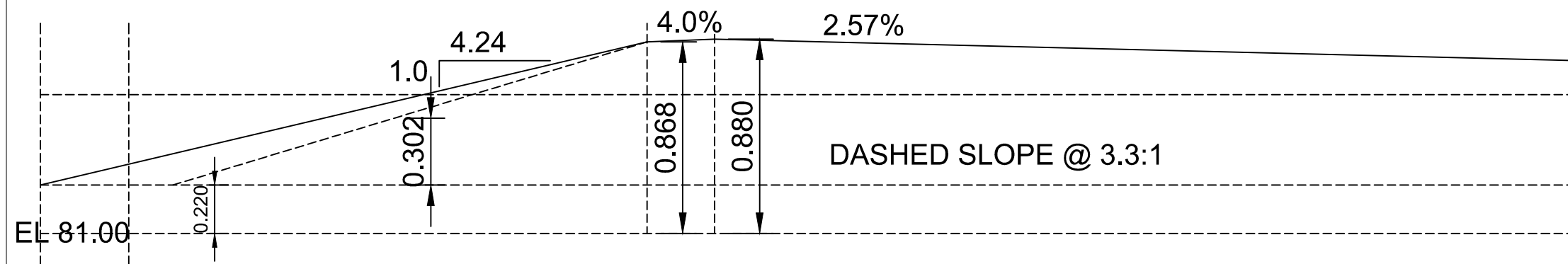


RETAINING WALL DETAIL ON SP2.9

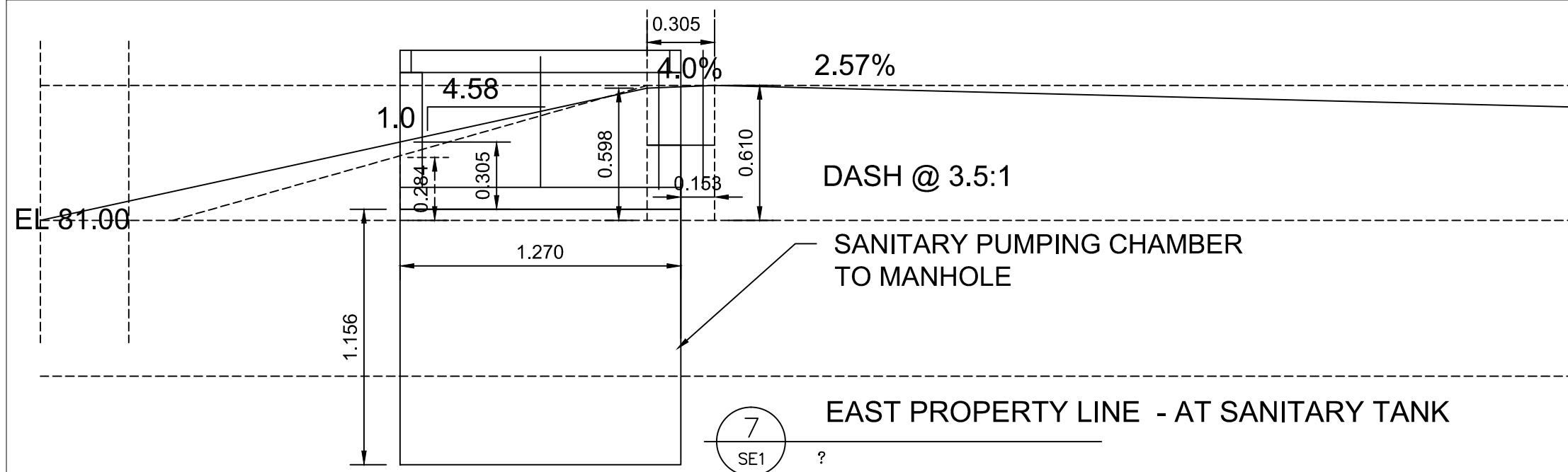


HAMBLY GROUP
DIVISION OF
8436550 CANADA CORPORATION
1104 Cedarwoods Dr.,
Verona,
ONTARIO
K0H 2W0
TEL 613 374 1746
CEL 613 536 8193
FAX 613 536 9118

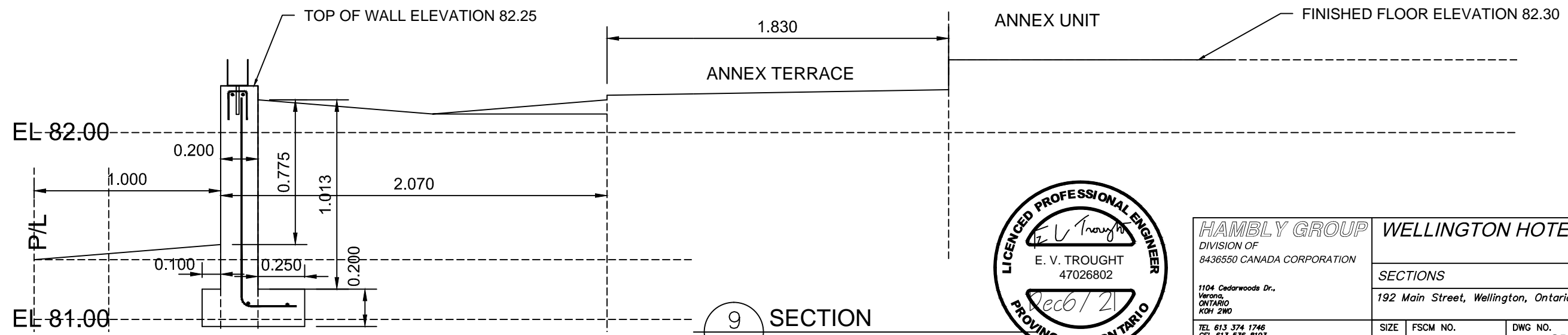
WELLINGTON HOTEL			
SECTIONS			
192 Main Street, Wellington, Ontario			
SIZE	FSCM NO.	DWG NO.	REV
		SP2.7	
SCALE 1:25	2021-11-22	SHEET 1	



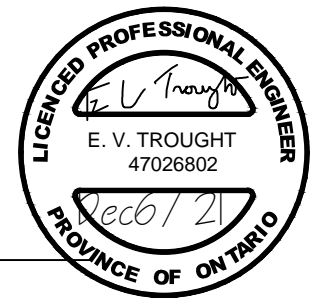
8 EAST PROPERTY LINE - SOUTH ANNEX
SE1 ?



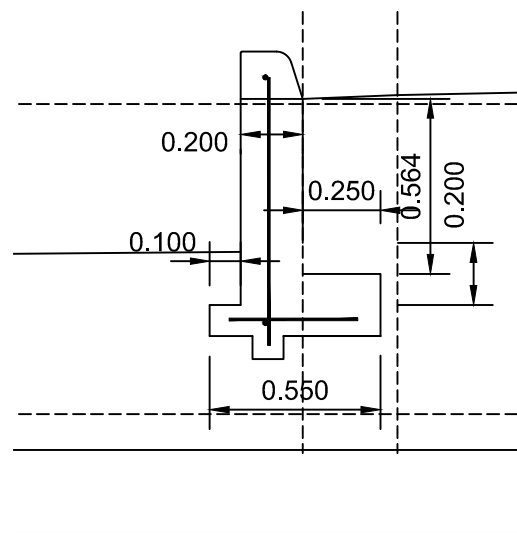
7 EAST PROPERTY LINE - AT SANITARY TANK
SE1 ?



9 SECTION
SE1 1:25



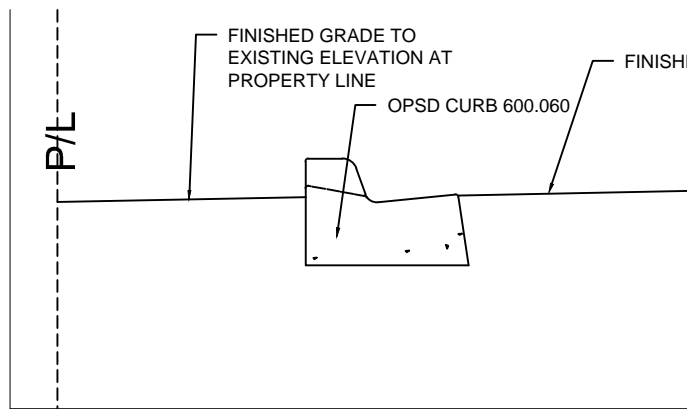
HAMBLY GROUP		WELLINGTON HOTEL	
DIVISION OF 8436550 CANADA CORPORATION			
1104 Cedarwoods Dr., Verona, ONTARIO N0H 2W0			
TEL 613 374 1746 CEL 613 536 8193 FAX 613 536 9118		SIZE	FSCM NO.
		DWG NO. SP2.8	REV
SCALE 1:25		2021-11-22	SHEET 1



REINFORCING
 VERTICAL 400 mm 10M @ 600 mm O/C
 HORIZONTAL 860 mm 10M @ 600 mm O/C
 LONG 2-10M

1 SECTION
 SP2.9 50:1

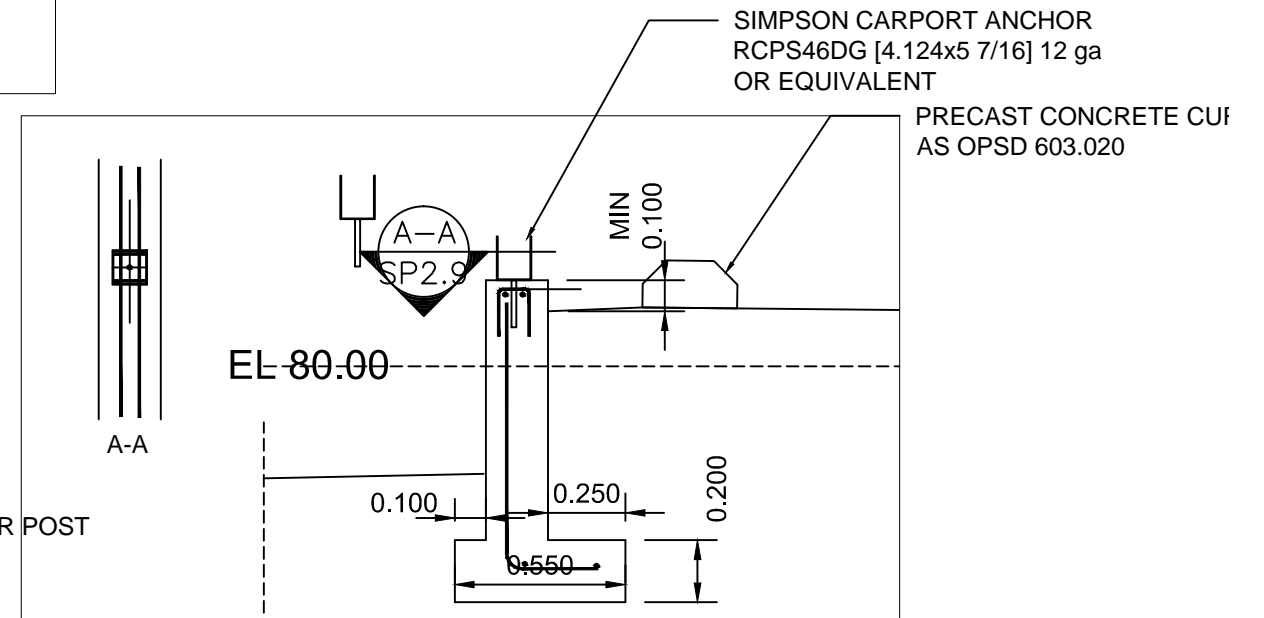
- NOTES FOR ALL RETAINING WALLS
1. ALL RETAINING WALLS ARE TO BE CONSTRUCTED ON SOUND UNDISTURBED SOIL OR ENGINEERED FILL.
 2. THE FOOTING MUST BE AT LEAST 200 mm BELOW FINISHED GRADE.
 3. USE 25 MPa CONCRETE WITH 5-8% AIR AND A SLUMP OF 100 mm [BEFORE APPLICATION OF PLASTICIZER]
 4. WATER CANNOT BE ADDED TO CONCRETE AT SITE. PLASTICIZER MAY BE ADDED AT THE PLANT FOR ADDED CONCRETE FLUIDITY.
 5. CONCRETE MUST BE ADEQUATELY PROTECTED AGAINST FROST.
 6. FENCE CONSTRUCTION SHOULD NOT BEGIN UNTIL TEN DAYS AFTER POUR.



DRIVEWAY CURB IS MATCHING MUNICIPAL BARRIER CURB. THIS CURB CONTINUES NORTH UNTIL THE FINISHED GRADE HAS A SLOPE OF 3:1 [H:V]. WITH A SLOPE GREATER THAN 3:1 THE RETAINING WALL IN 1/SP2.9 IS CONSTRUCTED

2 SECTION
 SP2.9 50:1

REINFORCING
 VERTICAL 850 +/- mm x 300mm 10M @ 600 mm O/C
 STIRRUPS 150 x 100 x 150 mm 10M @ 150mm O/C, 2 PER POST
 LONG 2-10M TOP, 210M BOTTOM



3 SECTION
 SP2.9 50:1

THE FENCE POST SHOULD BE INSTALLED AT 6 ft O/C [1800 mm O/C]. BUT THIS SPACING WILL BE REVIEWED AFTER A DETAIL IS PREPARED FOR THE FENCE.

THIS HEAVY DUTY SIMPSON CLIP IS LARGER THAN THE STANDARD 4x4 [3.5"x3.5", 89x89 mm]. THIS SADDLE IS 4.125". CONTRACTOR CAN USE 4x4'S FROM A SAW MILL OR FABRICATE THE SADDLES LOCALLY. THE CONTRACTOR TO PROVIDE SHOP DRAWINGS OF THE ASSEMBLY PRIOR TO ORDERING THE MATERIAL. NOTE WELDING MUST BE DONE BY CWB CERTIFIED WELDERS AND WELDING COMPANIES. FABRICATED SADDLES ARE TO BE PRIMED AND PAINTED.

THE SADDLE IS TO BE INSTALLED IN WET CONCRETE. THE ASSEMBLY MUST BE ADEQUATELY FASTENED TO THE FORMS PRIOR TO POUR. THE PRE-POUR INSPECTION SHOULD BE CALLED AFTER ALL 'JIG' ARE IN PLACE AND SECURELY FASTENED TO THE FORMS



HAMBLY GROUP		WELLINGTON HOTEL	
DIVISION OF 8436550 CANADA CORPORATION			
1104 Cedarwoods Dr., Verona, ONTARIO N0M 2W0		SECTIONS DETAILS 192 Main Street, Wellington, Ontario	
TEL 613 374 1746 CEL 613 536 8193 FAX 613 536 9118	SIZE	FSCM NO.	DWG NO. SP2.9
	SCALE 1:25	2021-11-22	SHEET 1

THE SANITARY MANHOLE IS LOCATED IN A PROPOSED PLACEMENT. THE SANITARY MANHOLE HAS ALREADY BEEN INSTALLED BUT NOT IN THIS LOCATION. LANDSCAPING REQUESTED THIS RELOCATION.

U/G STORAGE TANK [6.1x3.0x2.5 m] FOR SPRINKLER SYSTEM C/W FIRE FIGHTING PUMP AND BACKUP GEN-SET
 SPRINKLER WATER STORAGE TANK MAY BE PLASTIC 25,000 litre by 6.1 m by ZCL

125 mm SANITARY SERVICE SDR 28

50 mm SCHEDULE 40 STEEL PIPE CSA APPROVED

100 mm WATER SERVICE PRESSURE PVC PIPE CSA APPROVED

SEE NOTES CONCERNING ENTRY REGARDING CURBS, SIDEWALKS TRANSITIONS AND PAVEMENT CONSTRUCTION ON 'D1.4'

NOTE ALL WATER AND SANITARY LATERALS ARE TO BE FROST PROTECTED

100 mm SANITARY ABS GRAVITY TO PUMP TANK

U/G SANITARY TANK 2286x1270x1245 C/W GRADE RINGS SOLID STEEL CAP OPSD 401.020, 745 Ø [typ]

100 mm SCHEDULE 40 STEEL WATER SUPPLY TO ACTIVATED SPRINKLER SYSTEM
 SPRINKLER SYSTEM PUMP VAULT

50 mm SANITARY PRESSURE PIPE CATCH BASIN OPSD 705.010 [typ]

50 mm WATER SUPPLY TO STORAGE TANK WITH FLOAT SWITCH AND 2.5 ARM

50 mm SANITARY PRESSURE PIPE

U/G SANITARY TANK 2286x1270x1245 C/W GRADE RINGS SOLID STEEL CAP OPSD 401.020, 745 Ø [typ]

FIRE HYDRANT 150 mm WATER SERVICE DR18 PIPE CSA APPROVED WITH THRUST BLOCK AS PER 'D1.2'

PROP. AUX BUILDING

PROPOSED YOGA STUDIO

PROPOSED HOTEL ANNEX

CATCH BASIN OPSD 705.010 [typ]

CATCH BASIN SCHEDULE

CB ID	ELEV. T/CB	ELEV. I/I	ELEV. I/O	L	S %	ØFC mm
#1	82.40	-	81.90	21.7	0.5	
#2	82.30	81.79	81.74	21.0	0.5	
#3	82.16	81.63	81.58	19.2	4.2	
#4	80.23	79.60	79.60	27.8	1.0	
#10	79.96	-	79.66	6.1	1.0	
#5	80.31	79.32	79.27	39.9	1.0	
EX	78.72	78.21	-	-	-	-
#6	82.05	81.39	80.82	1.1	0.5	95
CLTC	82.05	80.77	80.77	-	-	-
#7	80.81	-	80.46	30.3	0.5	32
ITNK	81.13	80.26	80.21	6.6	1.2	
#8	80.60	-	80.25	13.6	0.5	
#9	80.44	80.18	80.13	24.5	0.5	
#5	81.00	80.01	79.42	39.9	1.0	

CB ID IDENTIFICATION OF CATCH BASIN
 ELEV. ELEVATION IN METRES
 T/CB TOP OF CATCHBASIN
 I/I INVERT OF ENTERING PIPE
 I/O INVERT OF EXITING PIPE
 L LENGTH IN METRES LEAVING CB
 S SLOPE IN % OF L
 EX EXISTING CB
 CLTC CULTEC SYSTEM OF CHAMBERS
 ITNK IRRIGATION STORAGE TANK 1000 gal 3.07x1.96x1.40, INLET INVERT 0.3DOWN FROM TOP TK DOWN 0.57m, EL 80.56
 ØFC ORIFICE DIAMETER IN mm

ITNK MAY BE A PLASTIC TANK - XACTICS 14-3605 FROM BARDON or 3900 litre by 3.39 m LONG ZCL FROM SEPTIC STORE

SEE NOTES ON D1.1, D1.2, D1.3 & D1.4



HAMBLY GROUP		WELLINGTON HOTEL	
DIVISION OF 8436550 CANADA CORPORATION			
1104 Cedarwoods Dr., Varona, ONTARIO K0H 2W0			
TEL 613 374 1746 CEL 613 536 8193 FAX 613 536 9118			
SIZE	FSCM NO.	DWG NO.	REV
SCALE 1:500	2021-11-22	SP3.1	
SHEET 1		SHEET 1	

THE SANITARY MANHOLE IS LOCATED IN A PROPOSED PLACEMENT. THE SANITARY MANHOLE HAS ALREADY BEEN INSTALLED BUT NOT IN THIS LOCATION. LANDSCAPING REQUESTED THIS RELOCATION.

U/G STORAGE TANK [6.1x3.0x2.5 m] FOR SPRINKLER SYSTEM C/W FIRE FIGHTING PUMP AND BACKUP GEN-SET
 SPRINKLER WATER STORAGE TANK MAY BE PLASTIC 25,000 litre by 6.1 m by ZCL

125 mm SANITARY SERVICE SDR 28

50 mm SCHEDULE 40 STEEL PIPE CSA APPROVED

100 mm WATER SERVICE PRESSURE PVC PIPE CSA APPROVED

SEE NOTES CONCERNING ENTRY REGARDING CURBS, SIDEWALKS TRANSITIONS AND PAVEMENT CONSTRUCTION ON 'D1.4'

NOTE ALL WATER AND SANITARY LATERALS ARE TO BE FROST PROTECTED

100 mm SANITARY ABS GRAVITY TO PUMP TANK

U/G SANITARY TANK 2286x1270x1245 C/W GRADE RINGS SOLID STEEL CAP OPSD 401.020, 745 Ø [typ]

100 mm SCHEDULE 40 STEEL WATER SUPPLY TO ACTIVATED SPRINKLER SYSTEM
 SPRINKLER SYSTEM PUMP VAULT

50 mm SANITARY PRESSURE PIPE C/W TRAP SIN OPSD 705.010 [typ]

50 mm WATER SUPPLY TO STORAGE TANK WITH FLOAT SWITCH AND PUMP ARM

125 mm SANITARY LATE

U/G SANITARY TANK 2286x1270x1245 C/W GRADE RINGS SOLID STEEL CAP OPSD 401.020, 745 Ø [typ]

CATCH BASIN SCHEDULE

CB ID	ELEV. T/CB	ELEV. I/I	ELEV. I/O	L	S %	ØFC mm
#1	82.40	-	81.90	21.7	0.5	
#2	82.30	81.79	81.74	21.0	0.5	
#3	82.16	81.63	81.58	19.2	4.2	
#4	80.23	79.60	79.60	27.8	1.0	
#10	79.96	-	79.66	6.1	1.0	
#5	80.31	79.32	79.27	39.9	1.0	
EX	78.72	78.21	-	-	-	-
#6	82.05	81.39	80.82	1.1	0.5	95
CLTC	82.05	80.77	80.77	-	-	-
#7	80.81	-	80.46	30.3	0.5	32
ITNK	81.13	80.26	80.21	6.6	1.2	
#8	80.60	-	80.25	13.6	0.5	
#9	80.44	80.18	80.13	24.5	0.5	
#5	81.00	80.01	79.42	39.9	1.0	

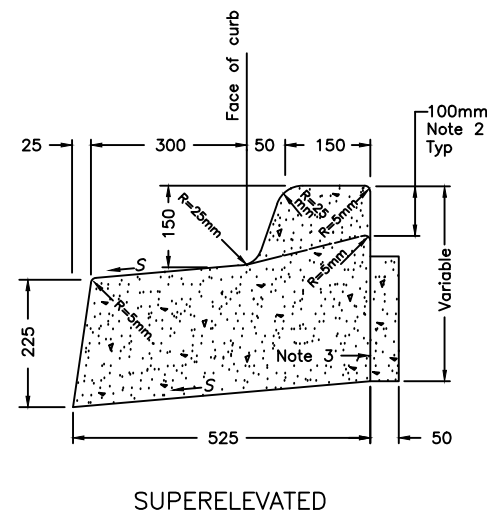
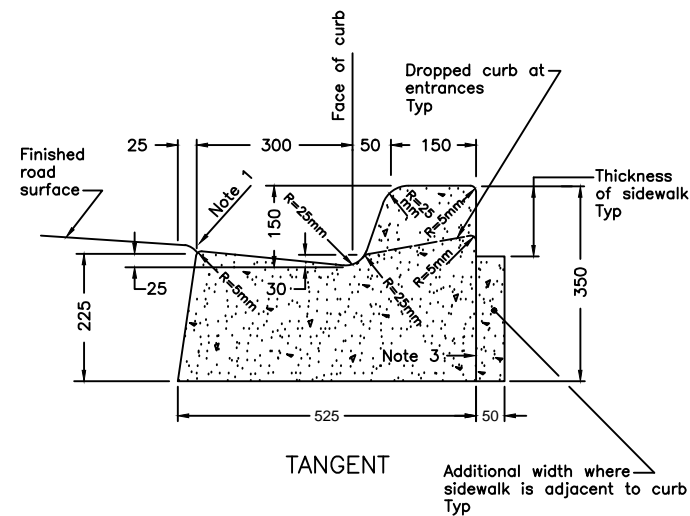
CB ID IDENTIFICATION OF CATCH BASIN
 ELEV. ELEVATION IN METRES
 T/CB TOP OF CATCHBASIN
 I/I INVERT OF ENTERING PIPE
 I/O INVERT OF EXITING PIPE
 L LENGTH IN METRES LEAVING CB
 S SLOPE IN % OF L
 EX EXISTING CB
 CLTC CULTEC SYSTEM OF CHAMBERS
 ITNK IRRIGATION STORAGE TANK
 1000 gal 3.07x1.96x1.40, INLET INVERT 0.30DOWN FROM TOP TK DOWN 0.57m, EL 80.56
 ØFC ORIFICE DIAMETER IN mm

ITNK MAY BE A PLASTIC TANK - XACTICS 14-3605 FROM BARDON or 3900 litre by 3.39 m LONG ZCL FROM SEPTIC STORE

SEE NOTES ON D1.1, D1.2, D1.3 & D1.4



HAMBLY GROUP		WELLINGTON HOTEL	
DIVISION OF 8436550 CANADA CORPORATION			
1104 Cedarwoods Dr., Varona, ONTARIO K0H 2W0			
TEL 613 374 1746 CEL 613 536 8193 FAX 613 536 9118			
SIZE	FSCM NO.	DWG NO.	REV
SCALE 1:500	2021-11-22	SP3.1	SHEET 1



NOTES:

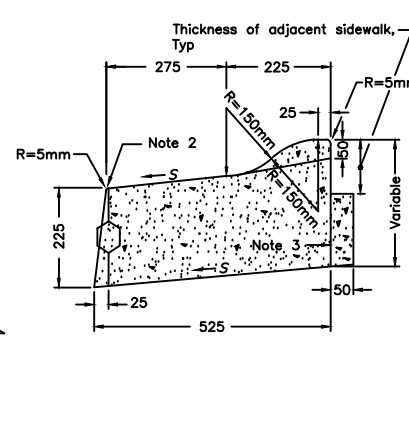
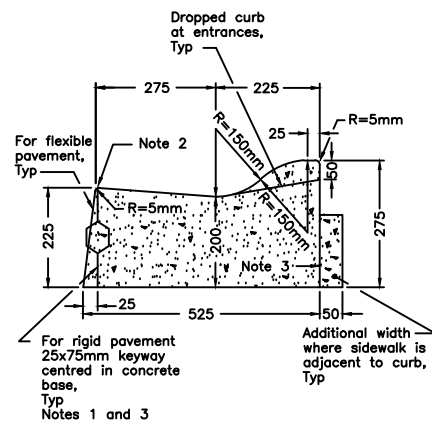
- 1 Flexible pavement shall be 5mm above the adjacent edge of gutter.
- 2 Where sidewalk is continuously adjacent, reduce the dropped curb at entrances to 75mm.
- 3 For slipforming procedure, a 5% batter is acceptable.
- A Treatment at entrances shall conform with OPSD-351.010.
- B Outlet treatment shall conform with OPSD-610 Series.
- C The length of transition from one curb type to another shall be 3.0m, except in conjunction with guide rail, it shall conform to OPSD-900 Series.
- D All dimensions are in millimetres unless otherwise shown.

LEGEND:

S - Rate of pavement superelevation in percent, %.

ONTARIO PROVINCIAL STANDARD DRAWING		April 1999	Rev	
CONCRETE BARRIER CURB WITH STANDARD GUTTER FOR FLEXIBLE PAVEMENT		-----		

		OPSD - 600.040		



NOTES:

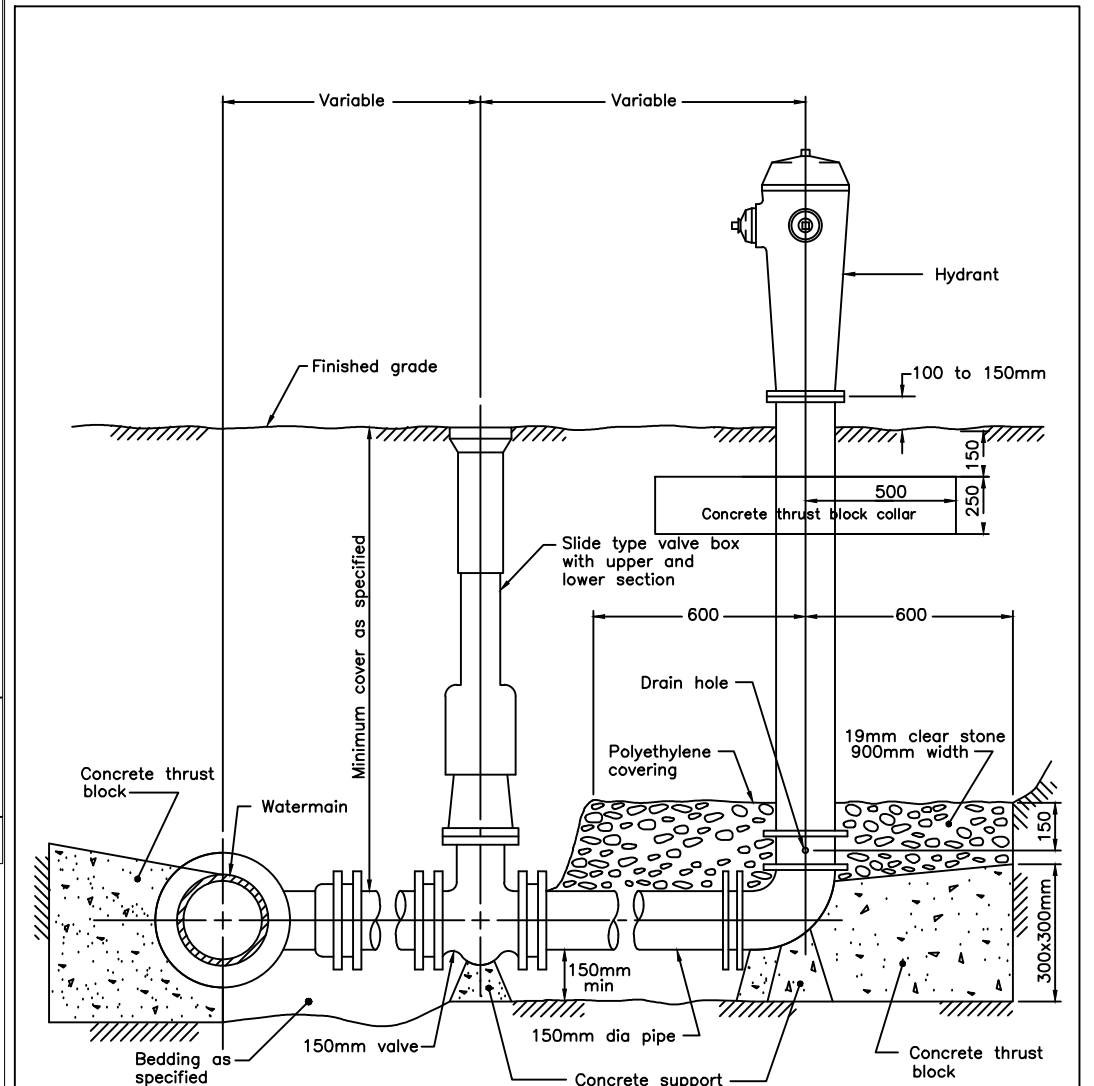
- 1 When curb and gutter is adjacent to concrete pavement or base, this drawing is to be used in conjunction with OPSD-552.010 and 552.020.
- 2 Flexible and composite pavement shall be placed 5mm above the adjacent edge of gutter.
- 3 For slipforming procedure, a 5% batter is acceptable.
- A Treatment at entrances shall conform with OPSD-351.010.
- B Outlet treatment shall conform with OPSD-610 Series.
- C The length of transition from one curb type to another shall be 3.0m, except in conjunction with guide rail, it shall conform to OPSD-900 Series.
- D All dimensions are in millimetres unless otherwise shown.

LEGEND:

S - Rate of pavement superelevation in percent, %.

ONTARIO PROVINCIAL STANDARD DRAWING		April 1999	Rev	
CONCRETE SEMI-MOUNTABLE CURB WITH STANDARD GUTTER		-----		

		OPSD - 600.060		



NOTES:

- A All concrete thrust blocks to be poured against undisturbed ground.
- B Bond breaker to be used between the concrete and the fittings and appurtenances.
- C Bolts and nuts for buried flange to flange connections are to be stainless steel.
- D Flange of standpipe extensions not to be in frost zone.
- E All dimensions are in millimetres unless otherwise shown.

ONTARIO PROVINCIAL STANDARD DRAWING		April 1999	Rev	
HYDRANT INSTALLATION		-----		

		OPSD - 1105.010		

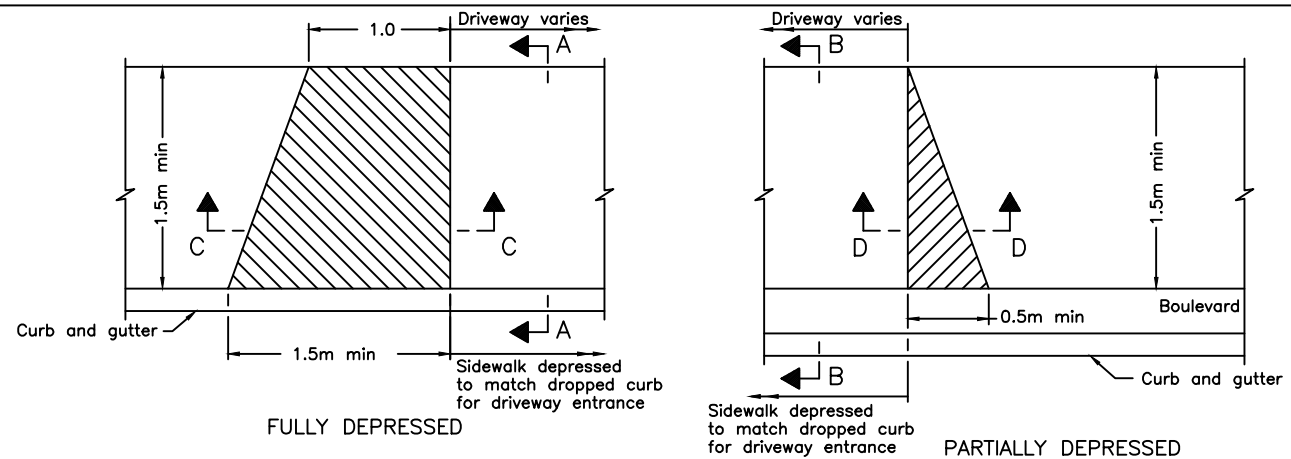
HAMBLY GROUP
 DIVISION OF
 8436550 CANADA CORPORATION
 1104 Cedarwoods Dr.,
 Verona,
 ONTARIO
 K0H 2W0
 TEL 613 374 1746
 CEL 613 536 8193
 FAX 613 536 9118

WELLINGTON HOTEL

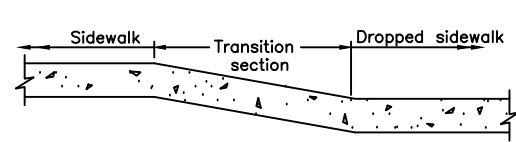
SITE PLAN - SITE NOTES

192 Main Street, Wellington, Ontario

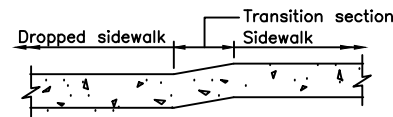
SIZE	FSCM NO.	DWG NO.	REV
		D1.2	



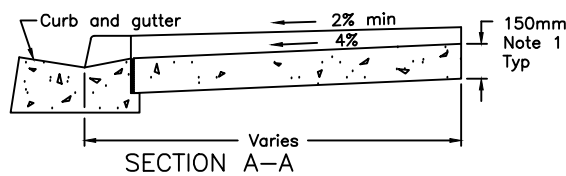
SIDEWALK AT DRIVEWAY ENTRANCE—PLAN



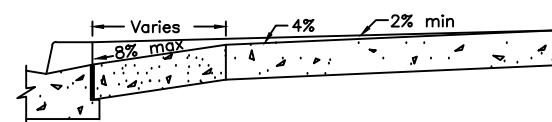
SIDEWALK WITHOUT BOULEVARD SECTION C-C



SIDEWALK WITH BOULEVARD SECTION D-D



SECTION A-A



SECTION B-B

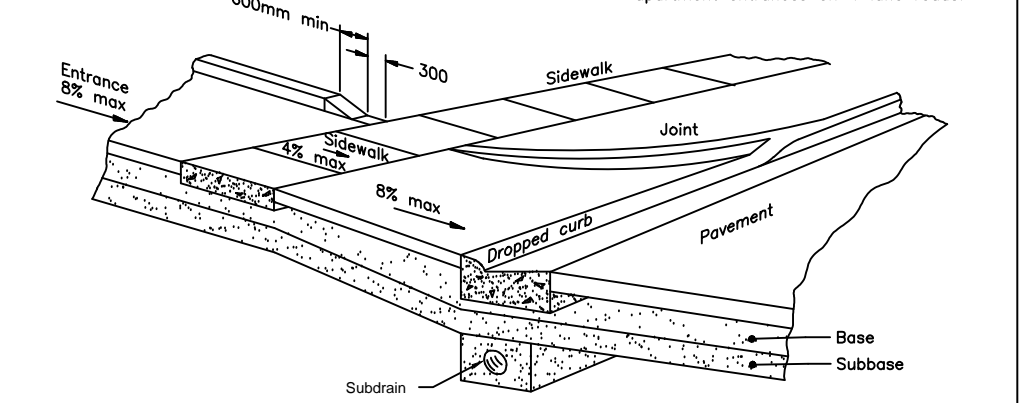
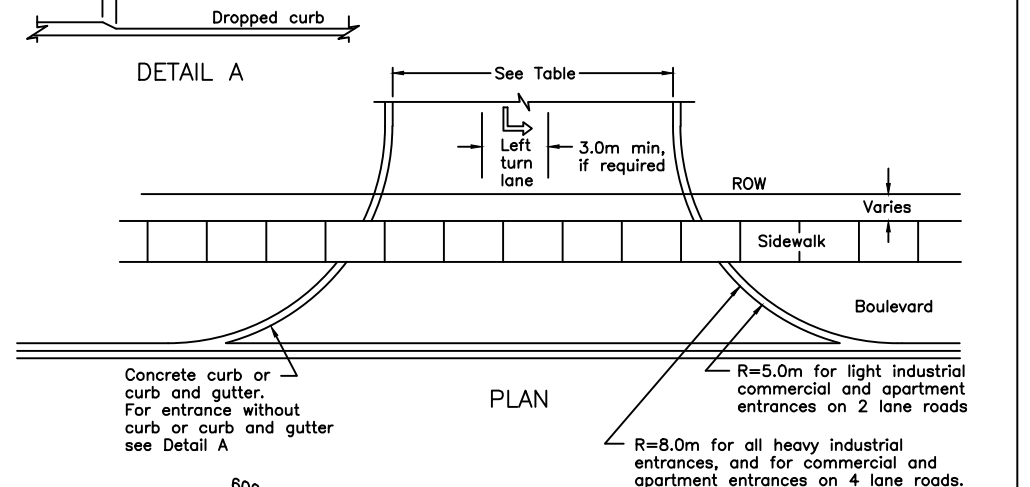
NOTES:

- 1 At commercial and industrial driveways the thickness shall be 200mm.
- A All dimensions are in millimetres or metres unless otherwise shown.

ONTARIO PROVINCIAL STANDARD DRAWING		1993 10 01	Rev	
<h2 style="text-align: center;">SIDEWALK DRIVEWAY ENTRANCE DETAILS</h2>		Date		
		OPSD - 310.050		

- NOTES CONCERNING SITE ENTRY
- 1.0 MUNICIPAL CURB DESIGN [OPSD 600.040] IS TO BE CONSTRUCTED INTO THE SUBJECT PROPERTY ON THE EAST SIDE WHERE IT WILL CONVERT TO BARRIER CURB/RETAINING WALL. THIS IS GRADE DEPENDANT. REFER TO SP2.9 FOR DETAILS. ON THE WEST SIDE OF THE ENTRY, THE OPSD BARRIER FREE CURB WILL TERMINATE 1.5 m INTO THE SUBJECT PROPERTY; i.e. 0.5 m AFTER THE HEAVY DUTY PAVEMENT.
 2. FOLLOW OPSD ENTRY DESIGNS 310.050 AND 350.010.
 3. SIDEWALK IS 200 mm THICK ACROSS THE DRIVEWAY. OTHER SIDEWALKS ON THE PROPERTY WILL BE CONSTRUCTED 150 mm THICK, WITH JOINTS IN COMPLIANCE WITH OPSD 310.010.
 4. MOUNTABLE OPSD CURB 600.060 IS USED ACROSS THE ENTRANCE, PARALLEL TO THE STREET.
 5. TRANSITIONS ARE USED TO TERMINATE THE CURBS ACROSS THE SIDEWALK. SEE DRAWING ON 'D1.4'

LAND USE	WIDTH m				RADIUS m	
	One-Way		Two-Way		min	max
	min	max	min	max		
Light Industrial Commercial and Apartment	4.5	7.5	7.2	12.0	4.5	12.0
Heavy Industrial	5.0	9.0	9.0	15.0	6.0	15.0



- NOTES:
- A All dimensions are in millimetres unless otherwise shown.

ONTARIO PROVINCIAL STANDARD DRAWING		April 1999	Rev	
<h2 style="text-align: center;">URBAN INDUSTRIAL, COMMERCIAL AND APARTMENT ENTRANCES</h2>		Date		
		OPSD - 350.010		



HAMBLY GROUP DIVISION OF 8436550 CANADA CORPORATION 1104 Cedarwoods Dr., Verona, ONTARIO K0H 2W0 TEL 613 374 1746 CEL 613 536 8193 FAX 613 536 9118		WELLINGTON HOTEL SITE PLAN - SITE NOTES & DETAILS 192 Main Street, Wellington, Ontario	
SIZE	FSCM NO.	DWG NO.	REV
SCALE NTS	2021-11-22	D1.3	SHEET 1

NOTES CONCERNING SERVICES

1. a) ALL SANITARY LATERALS THAT SERVE THE VARIOUS BUILDINGS ON THE PROPERTY DRAIN TO AN EXISTING 1200 mm OPSD MANHOLE. THE MAIN SANITARY LATERAL FROM THE ORIGINAL BUILDING IS 125 mm. THE LATERAL FROM THE MANHOLE TO THE MUNICIPAL SANITARY MANHOLE IS 125 mm. SANITARY SERVICE LATERAL IS 125 DR PIPE WITH A 0.7% SLOPE TO THE MUNICIPAL PIPE CONNECTION FROM THE MANHOLE. THE PROJECT MANHOLE TO HAVE A SOLID CASE IRON COVER.
- b) THE MINIMUM SEPARATION BETWEEN SANITARY LATERAL AND WATER LATERAL IS 2.5 m.
- c) SANITARY LATERAL IS 150 mm, GREEN DR 28 WITH ELASTOMERIC GASKET AS PER OPSS 1841 AND CSA B182.2 M1990.
- d) MANHOLE TO CONFORM TO OPSD 700 WITH SOLID COVER.
- e) MANHOLE TO BE TESTED FOR LEAKS AS PER OPSS sect 407
- f) BEDDING FOR NEW INSTALLATIONS WILL CONFORM TO OPSD 820 AND THE GRANULAR 'A' WILL CONFORM TO OPSS.
- g) BRANCH CONNECTIONS ARE PRE-MANUFACTURED 'CSA' 'Y' FITTINGS. ALL JOINTS IN THE LATERAL WILL BE BELL AND SPIGOT TYPE.
- h) A MINIMUM COVER OF 1.5 m WILL BE REQUIRED OVER THE FULL LENGTH OF THE LATERAL AND ITS BRANCHES.

2. a) WATER SERVICE MAIN IS 100 mm PRESSURE PVC PIPE FROM 200 mm MAIN IN THE STREET TO THE FRONT OF THE MAIN BUILDING WHERE IT WILL ENTER BASEMENT TO HAVE THE METERED. INSTALLED.
- b) A MAIN WATER SERVICE CUT-OFF VALVE IS TO BE INSTALLED JUST INSIDE THE PROPERTY LINE NEAR THE ROAD.
- c) LATERAL IS TO BE CONNECTED TO THE 200 mm MAIN USING A TAPPING SLEEVE AND VALVE TYPE CONNECTION. ALL MATERIALS TO BE SUPPLIED BY THE APPLICANT.
- d) THERE WILL BE A VALVE ON THE TAPPING SLEEVE AND ANOTHER 1.2 m UP THE LATERAL INSIDE THE APPLICANT'S PROPERTY LINE WITH BOXES ADJUSTED TO FINISHED GRADE.
- e) THE MINIMUM COVER OF THE WATER SERVICE LATERAL WILL BE 1.7 m
- f) PRIOR TO PUTTING THE WATER SERVICE INTO USE, A BACTERIAL TEST MUST BE PERFORMED AND THE LINE SHOWN TO BE FREE OF BACTERIA. A COPY OF THE TEST REPORT MUST BE PROVIDED TO THE COUNTY PRIOR TO THE LINE BEING PUT INTO SERVICE.
- g) ALL WORK TO SERVICES IS TO BE CARRIED OUT IN ACCORDANCE WITH ALL APPLICABLE GUIDELINES AND SPECIFICATIONS OF THE COUNTY AND THIS DESIGN.

3. ELECTRICAL SERVICE WILL BE BURIED FROM THE HYDRO POLE TO A TRANSFORMER PAD WHERE THE POWER IS REDUCED TO 600 amp 120/208 v, 3-PHASE. THIS POWER IS RUN TO THE ELECTRICAL VAULT IN THE FRONT YARD, TO BE LOCATED BY HYDRO ONE. FEED ENTERS THE MAIN BUILDING NEAR THE NORTH END OF THE WEST WALL. RUNNING INTO THE ELECTRICAL ROOM AT THE NORTH END OF THE BUILDING WHERE IT WILL BE METERED AGAIN AND SPLIT TO OTHER BUILDINGS ON THE PROPERTY. FEEDS WILL ALSO RUN TO FOUR OTHER BUILDINGS: THE 'CHALET SUITE', THE ANNEX, THE YOGA SUITE AND THE SEASON BUILDING.

4. CATCH BASIN GRATE TO BE ADJUSTED WITH MANUFACTURER'S COLLARS TO SAME ELEVATION AS FINISHED PAVEMENT. ALL CATCH BASIN GRATES TO BE PROTECTED FROM SEDIMENT INFILTRATION DURING CONSTRUCTION WITH GEOFABRIC. FABRIC TO HAVE AT LEAST 75 mm LAP ON UNDER SIDE OF GRATE TO MAINTAIN FULL COVERAGE OF THE GRATE. CATCH BASIN SUMP TO BE CLEANED PRIOR TO COVER AND AGAIN AFTER COVER IS REMOVED. COVER IS TO BE INSTALLED PRIOR TO CONSTRUCTION AND LEFT IN INSTALLED UNTIL VEGETATION IS RE-ESTABLISHED.

5. CONTRACTOR TO CONSULT WITH ARBORIST NOTES REGARDING THE CONSTRUCTION OF THE WOOD FENCE AND SWALES. FENCE MAY BE INTERRUPTED AT MATURE TREES. SWALES MAY BE CONSTRUCTED INSIDE THE TREES TO AVOID DAMAGE. OTHER CONFLICTS TO BE BROUGHT TO THE ATTENTION OF THE ENGINEER.

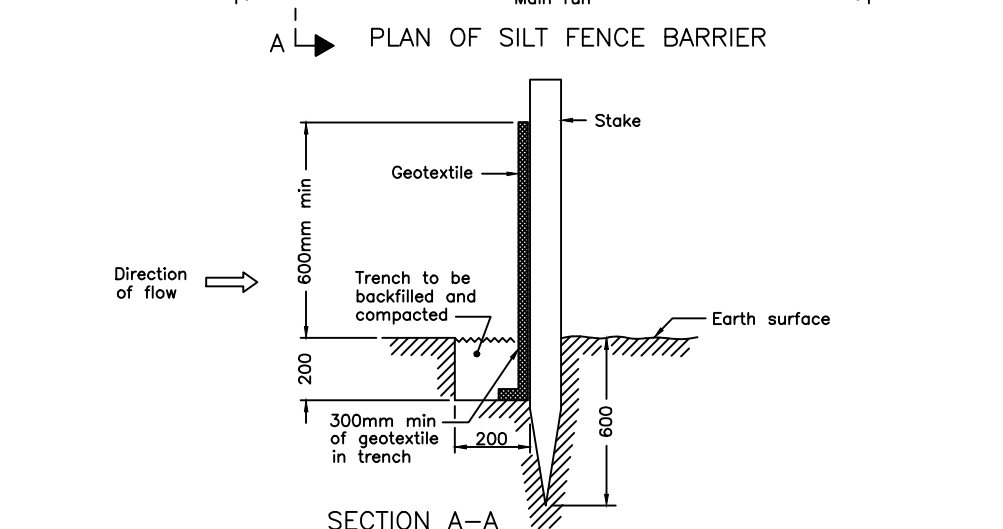
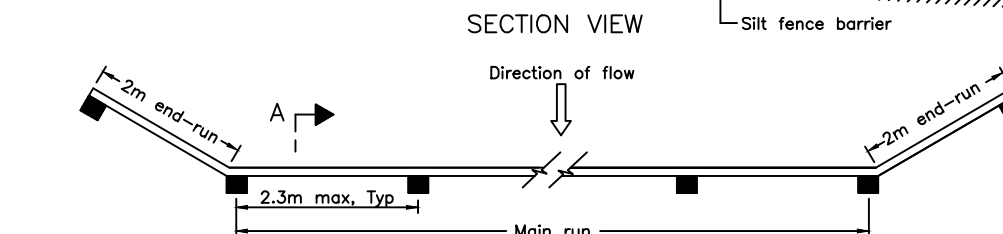
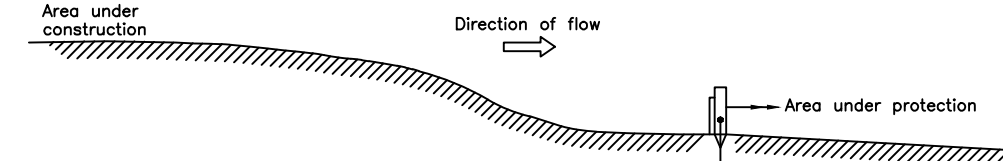
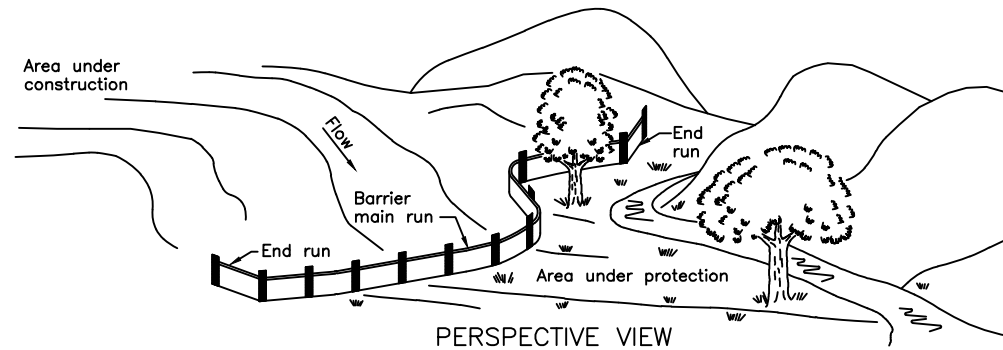
6. DRAWING INDICATES A WATER METER CHAMBER. BUT UNTIL THE TOWN PROVIDES THE 'STANDARD' FOR REVIEW, THE OWNER IS NOT PERMITTED TO GIVE A 'BLANK' APPROVAL FOR THE WATER METER CHAMBER. SHOULD THIS CHAMBER BE INSTALLED, THERE WILL BE TWO BACK FLOW PREVENTERS INSTALLED WITH THE METER.

8. WATER SERVICE LATERAL AND THE FIRE SERVICE LATERAL IS TO HAVE A 14 ga TW SOLID COPPER COATED WIRE ATTACHED TO THE TOP SIDE OF THE PIPE. AS PER OBC12 7.2.11.3.

9. CONTRACTOR TO REVIEW THE LANDSCAPING DRAWINGS. THE GRADING ALONG THE WEST AND NORTH PROPERTY LINES IS LIMITED TO MAINTAIN THE EXISTING 'SUITABLE' TREES. THE SUITABLE TREES ARE IDENTIFIED ON THE LANDSCAPING PLANS. INSIDE THE TREES (AND ROOT SYSTEM) GRADES MAY BE ACHIEVED AS PER THE STORMWATER PLAN. THE CONTRACTOR SHALL IDENTIFY ANY CONFLICTS WITH THE ENGINEER FOR RESOLUTION.

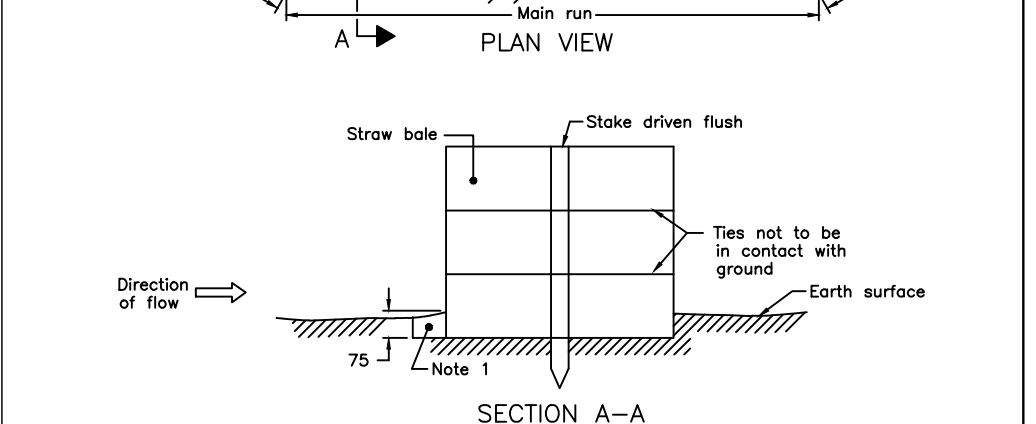
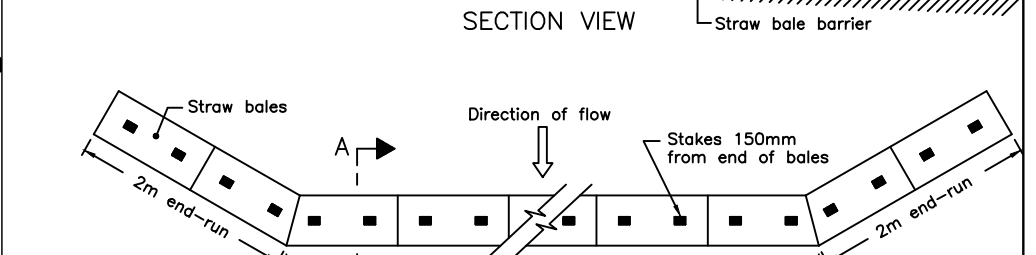
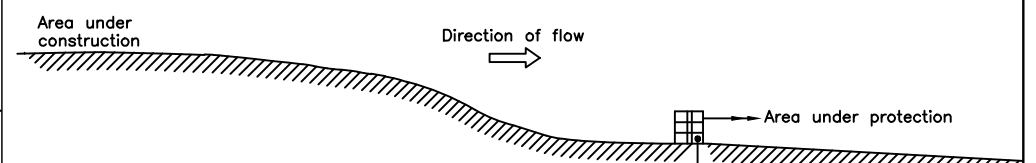
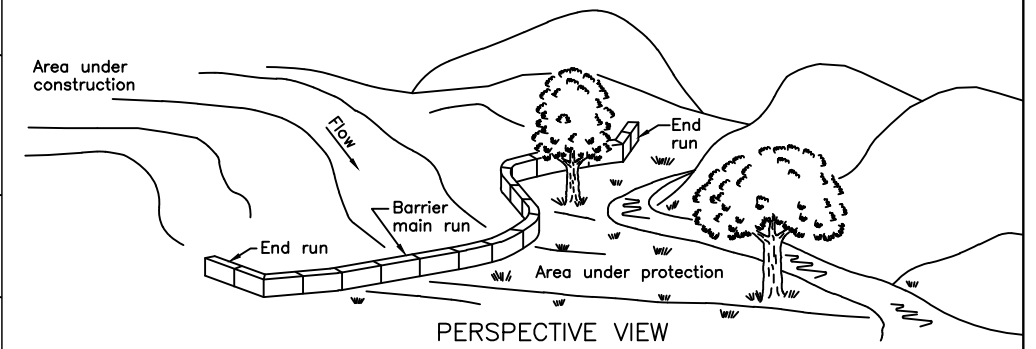
NOTES CONCERNING STORMWATER DESIGN

1. STORMWATER FROM THE DEVELOPMENT WILL BE CONTROLLED ON THE LOT.
2. CONTROL OUTLETS AT CATCH BASINS BY ORIFICE PLATE. ENSURE THE ORIFICE INVERTS ARE AT THE SAME ELEVATION AS THE PIPE INVERT ELEVATIONS. THE ORIFICE SIZE IS INDICATED ON THE DRAWING.
3. DURING CONSTRUCTION PRECAUTIONS ARE TO BE TAKEN TO MINIMIZE THE IMPACT OF SUSPENDED PARTICULATE FROM ENTERING THE TOWN STORM SYSTEM OR NEIGHBOURING PROPERTY BY INSTALLING A SILT FENCE AS INDICATED ON THE DRAWING [SILT FENCE TO COMPLY WITH OPSD 219.110]. GEOFABRIC IS TO BE PLACED AROUND EACH CATCH BASIN GRATES (AS PER OPSD 577) IMMEDIATELY AFTER PLACEMENT OF NEW UNITS AND IS TO BE INSTALLED AROUND NEAR CATCH BASINS - ONE ONE AT THE SOUTH END OF THE DRIVEWAY AND THE FIRST ONE IN THE MUNICIPAL ROAD.
3. TEMPORARY MEASURES ARE TO BE TAKEN TO MAINTAIN THE QUALITY OF RUNOFF FROM RAIN FALL. BAILS OF STRAW ARE TO BE LAID ACROSS THE SWALE ON THE WEST SIDE OF THE ENTRY LOT AS INDICATED ON THE DRAWING.
4. THESE CONTROL STRUCTURES SHOULD BE INSTALLED PRIOR TO CONSTRUCTION, BE MAINTAINED DURING CONSTRUCTION AND BE LEFT IN PLACE UNTIL MATURE VEGETATION HAS BEEN ESTABLISHED.
5. THE CATCH BASINS TO BE PROTECTED INCLUDE ALL NEW ON SITE AND THE EXISTING MUNICIPAL CATCH BASINS THAT WILL COLLECT ON SITE RUNOFF.
6. THE GENERAL CONTRACTOR WILL BE RESPONSIBLE TO MAKE DAILY INSPECTIONS TO ENSURE THE CONTINUOUS OPERATION OF THE CONTROL DEVICES AS THEY WERE INTENDED. ULTIMATELY THE OWNER WILL BE RESPONSIBLE THAT ALL MEASURES ARE TAKEN.
7. REFER TO THE STORMWATER MANAGEMENT REPORT FOR INSTRUCTIONS ON THE PROPOSED CULTREC SYSTEM.
8. ORIFICES ARE TO BE INSTALLED IN OUTLETS FOR CATCH BASINS #6 AND #7; 95 mm AND 32 mm, RESPECTIVELY. INVERT OF ORIFICE IS COINCIDENT WITH THE INVERT OF THE PIPE.



NOTE:
A All dimensions are in millimetres or metres unless otherwise shown.

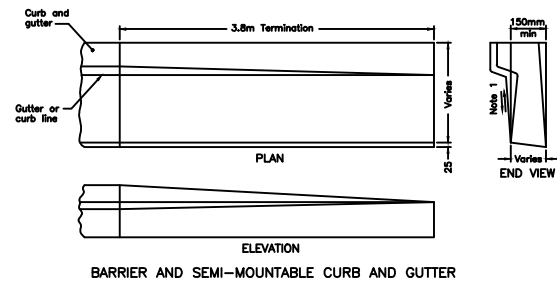
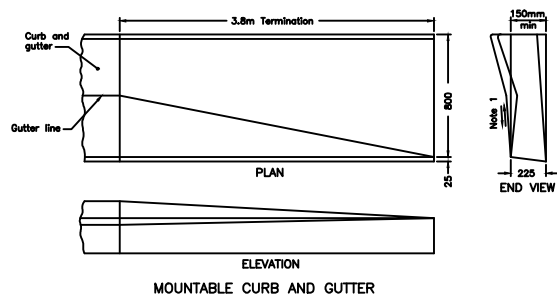
**LIGHT DUTY
SILT FENCE BARRIER
OPSD - 219.110**



NOTES:
1 Balance of excavated trench to be backfilled following bale placement.
A All dimensions are in millimetres or metres unless otherwise shown.

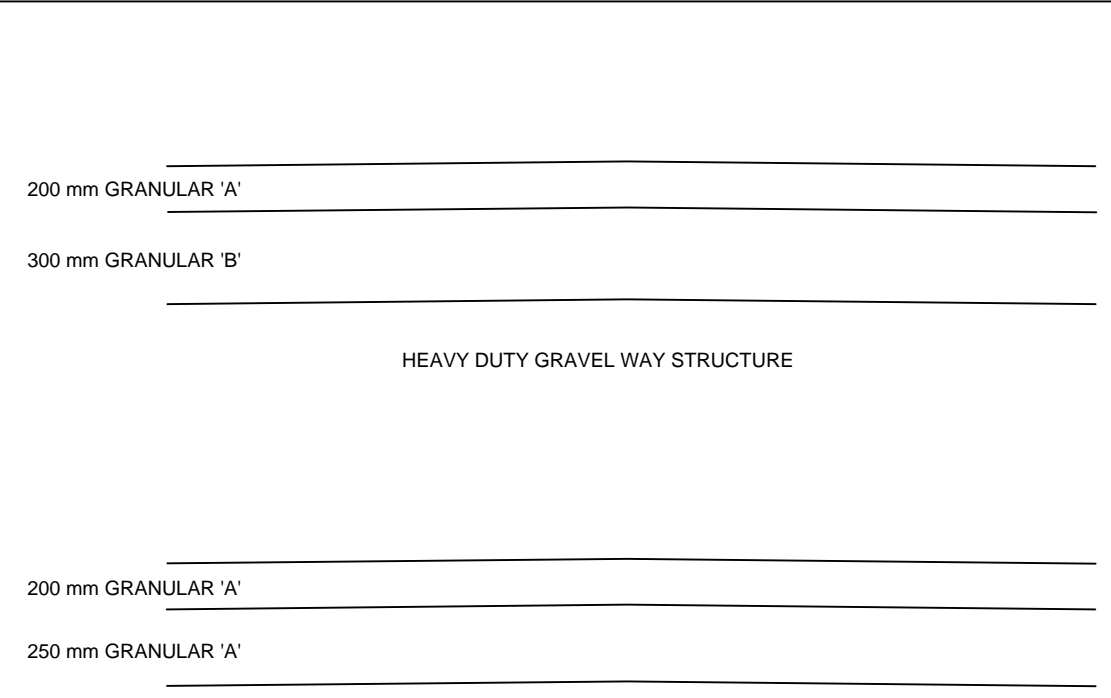
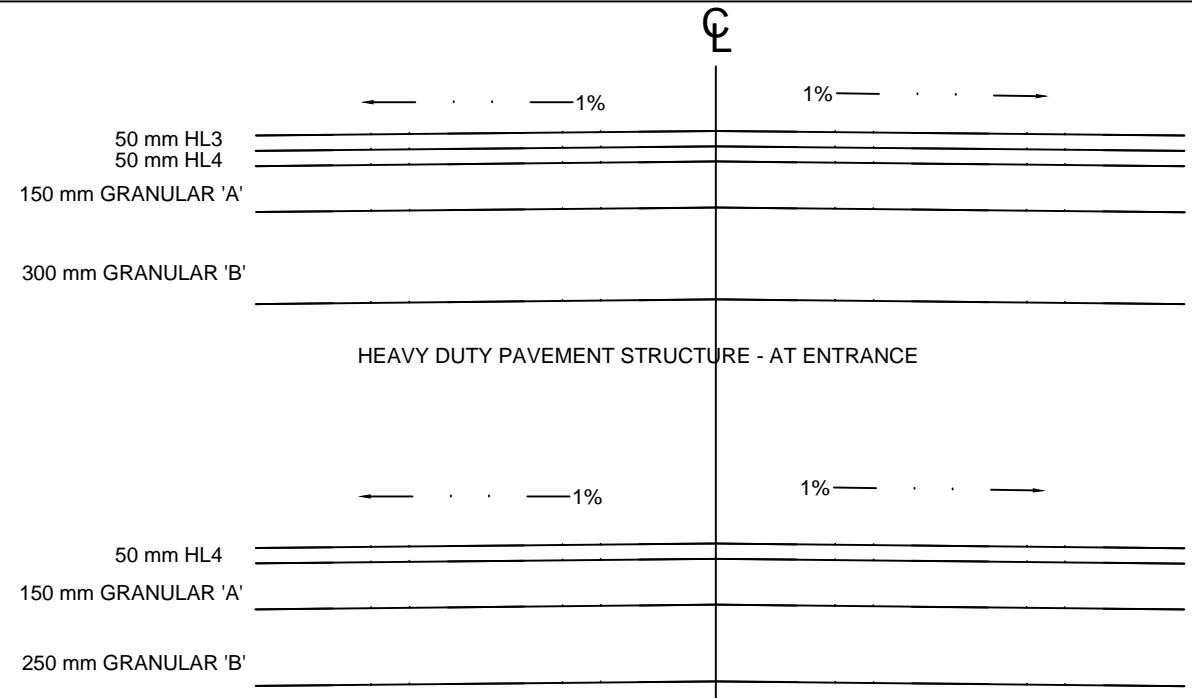
**LIGHT DUTY
STRAW BALE BARRIER
OPSD - 219.100**

HAMBLY GROUP		WELLINGTON HOTEL	
DIVISION OF 8436550 CANADA CORPORATION		SITE PLAN - SITE NOTES	
1104 Cedarwoods Dr., Verona, ONTARIO K0H 2W0		192 Main Street, Wellington, Ontario	
TEL 613 374 1746 CEL 613 536 8193 FAX 613 536 9118	SIZE	FSCM NO.	DWG NO. D1.1
SCALE NTS	2021-11-22	SHEET 1	



NOTES:
 1 Slope to match existing shoulder.
 A This drawing is to be read in conjunction with OPSD-600 series curb and gutter drawings.
 B All dimensions are in millimetres unless otherwise shown.

ONTARIO PROVINCIAL STANDARD DRAWING April 1999 Rev
METHOD OF TERMINATION
 FOR CONCRETE CURB AND GUTTER
 OPSD - 608.010



DRIVEWAY PAVEMENT STRUCTURE

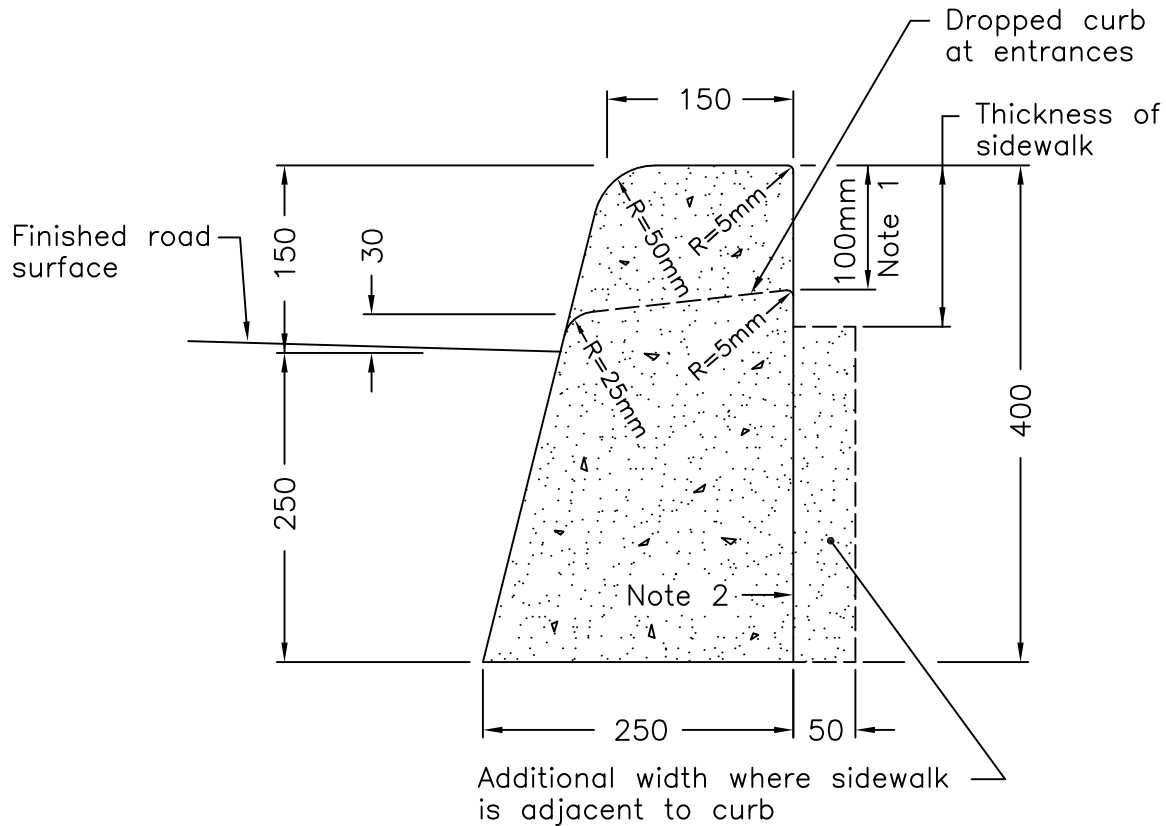
REGULAR GRAVEL WAY STRUCTURE

1 ROAD STRUCTURES
 D1.4 NTS

NOTES CONCERNING BASES FOR DRIVES, PARKING AND WALKWAYS
 1.0 ALL DRIVES, PARKING LOTS AND WALKWAYS ARE CONSTRUCTED ON UNDISTURBED SOIL AND/OR ENGINEERED FILL.
 2. THE ENTRY DRIVE IS CONDUCTED OF HEAVY DUTY PAVEMENT AND BASE AS PER DETAIL OF '1/D1.4' TO ONE METRE INSIDE THE PROPERTY LINE..
 3. THE FIRE ROUTE IS CONSTRUCTED OF HEAVY DUE GRAVEL CONSTRUCTION AS PER '1/D1.4'.
 4. THE BALANCE OF THE PARKING LOT IS CONSTRUCTED OF LIGHT DUTY GRAVEL CONSTRUCTION AS INDICATED IN '1/D1.4'.
 5. ALL WALKWAYS HAVE A MINIMUM 200 mm GRANULAR 'A' BASE ON UNDISTURBED SOIL OR ENGINEERED FILL.
 6. ALL PATHWAYS THAT SERVICE BARRIER FREE CLIENTS MUST COMPLY WITH THE PROVISIONS OF OBC20 3.8.



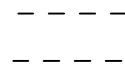
HAMBLY GROUP		WELLINGTON HOTEL	
DIVISION OF 8436550 CANADA CORPORATION		SITE PLAN - SITE NOTES & DETAILS	
1104 Cedarwoods Dr., Verona, ONTARIO K0H 2W0		192 Main Street, Wellington, Ontario	
TEL 613 374 1746 CEL 613 536 8193 FAX 613 536 9118	SIZE	FSCM NO.	DWG NO. D1.4
	SCALE NTS	2021-11-22	REV SHEET 1



NOTES:

- 1 Where sidewalk is continuously adjacent, reduce the dropped curb at entrances to 75mm.
- 2 For slipforming procedure, a 5% batter is acceptable.
- A Treatment at entrances shall conform with OPSD-351.010.
- B Outlet treatment shall conform with OPSD-610 Series.
- C The length of transition from one curb type to another shall be 3.0m, except in conjunction with guide rail, it shall conform to OPSD-900 Series.
- D All dimensions are in millimetres unless otherwise shown.

CONCRETE BARRIER CURB



OPSD — 600.110