

PLAN OF SURVEY OF
 PART OF LOT 89
 CONCESSION 2
 TOWNSHIP OF AMELIASBURGH
 NOW IN THE MUNICIPALITY OF
 THE COUNTY OF PRINCE EDWARD
 METRIC SCALE 1 : 500
 0 5 10 15 20 25 50 METRES
 KEITH WATSON O.L.S.

SCHEDULE				
PART	LOT/BLOCK	CONCESSION/PLAN	PIN	AREA
1	PART OF LOT 89	CONCESSION 2	PART OF PIN 55012-0152	0,771 Ha.

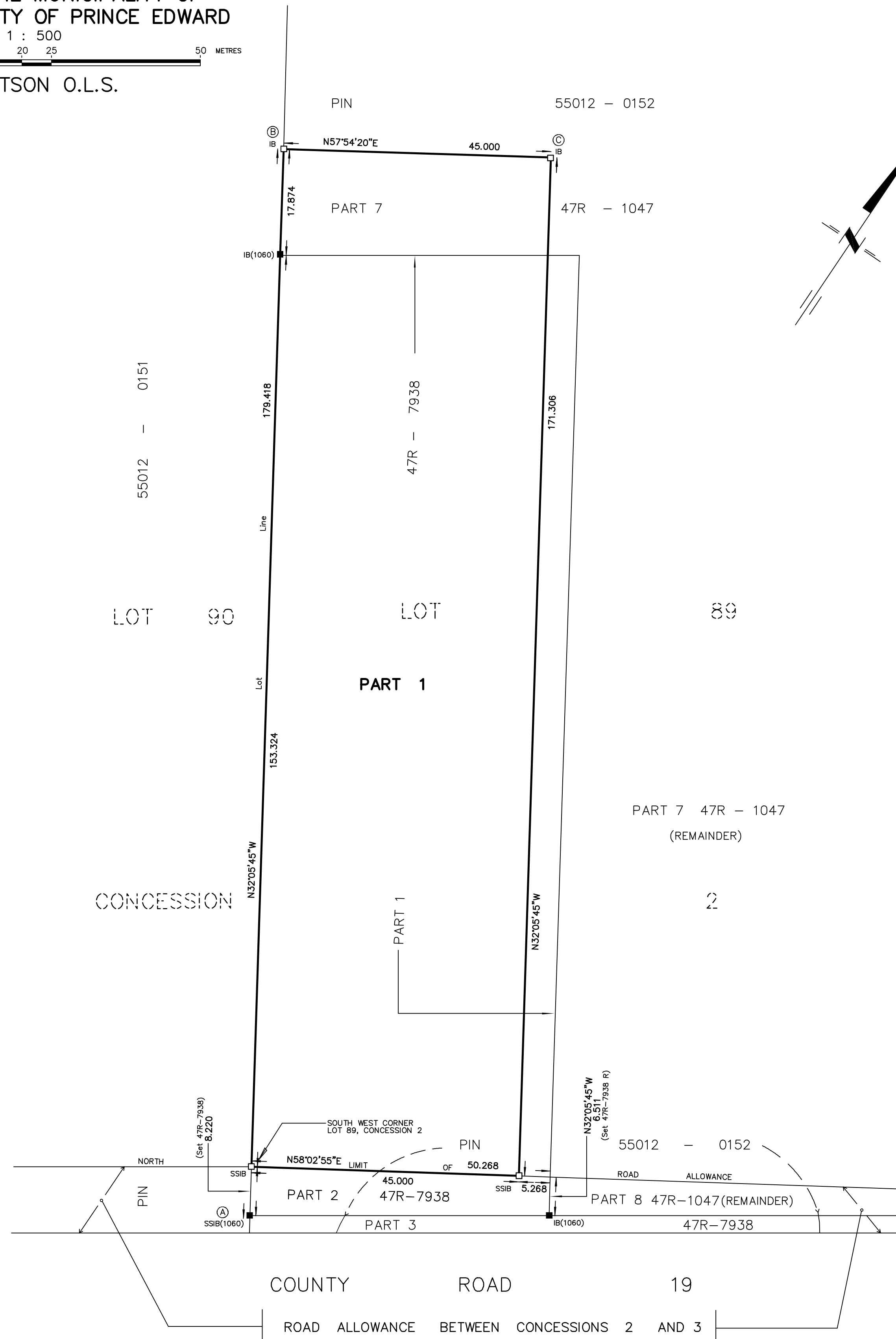
PLAN 47R-9220

RECEIVED AND DEPOSITED
 (Date) _____ 2022

REPRESENTATIVE FOR LAND REGISTRAR
 FOR THE LAND TITLES
 DIVISION OF PRINCE EDWARD (47)

I REQUIRE THIS PLAN TO BE DEPOSITED
 UNDER THE LAND TITLES ACT.
 (Date) JANUARY 26 2022

KEITH WATSON
 ONTARIO LAND SURVEYOR



LEGEND :

- DENOTES SURVEY MONUMENT FOUND
- " SURVEY MONUMENT PLANTED
- SIB " STANDARD IRON BAR
- SSIB " SHORT STANDARD IRON BAR
- IB " IRON BAR
- (1060) " W. L. WATSON O.L.S.
- (WIT) " WITNESS

OBSERVED REFERENCE POINTS DERIVED FROM GPS OBSERVATIONS
 USING REAL TIME NETWORK (RTN), UTM ZONE 18, NAD83 (CSRS) 2010
 COORDINATES TO RURAL ACCURACY PER SEC. 14 (2) OF O. REG 216/10

POINT ID	NORTHING	EASTING
A	4880595.57	301952.44
B	4880747.57	301857.12
C	4880771.47	301895.22

COORDINATES CANNOT, IN THEMSELVES, BE USED TO
 RE-ESTABLISH THE CORNERS OR BOUNDARIES
 SHOWN ON THIS PLAN

NOTES :

BEARINGS ARE UTM GRID BEARINGS AND ARE DERIVED FROM OBSERVED
 REFERENCE POINTS A AND B BY REAL TIME NETWORK OBSERVATIONS
 UTM ZONE 18, NAD 83 (CSRS) 2010

DISTANCES SHOWN ARE GROUND DISTANCES AND CAN
 BE CONVERTED TO GRID BY MULTIPLYING BY
 A COMBINED SCALE FACTOR OF 1.000070

TO CONVERT LOCAL ASTRONOMIC BEARINGS TO GRID BEARINGS
 ROTATE 1°47'15" CLOCKWISE

METRIC :

DISTANCES AND COORDINATES SHOWN ON THIS PLAN ARE IN
 METRES AND CAN BE CONVERTED TO FEET BY DIVIDING BY 0.3048.

SURVEYOR'S CERTIFICATE :

I CERTIFY THAT :

- THIS SURVEY AND PLAN ARE CORRECT AND IN ACCORDANCE
 WITH THE SURVEYS ACT, THE SURVEYORS ACT AND THE
 LAND TITLES ACT AND THE REGULATIONS MADE UNDER THEM.
- THE SURVEY WAS COMPLETED ON THE 1ST DAY OF NOVEMBER, 2021.

JANUARY 26, 2022

KEITH WATSON
 ONTARIO LAND SURVEYOR

218 CHURCH STREET
 BELLEVILLE, ONTARIO
WATSON
 LAND SURVEYORS Ltd.
 KBN - 3C3
 (613) 962 - 9521

2177694

PROJECT N^o 13299-R-21