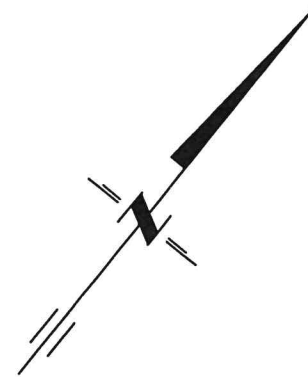


SKETCH

PART OF LOT 39 AND ALL OF LOTS 40 AND 41
 REGISTERED PLAN No. 33
 TOWNSHIP OF AMELIASBURGH
 NOW IN THE MUNICIPALITY OF
 THE COUNTY OF PRINCE EDWARD

METRIC SCALE 1 : 350



METRIC :

DISTANCES SHOWN ON THIS PLAN ARE IN METRES
 AND CAN BE CONVERTED TO FEET BY DIVIDING BY 0.3048.

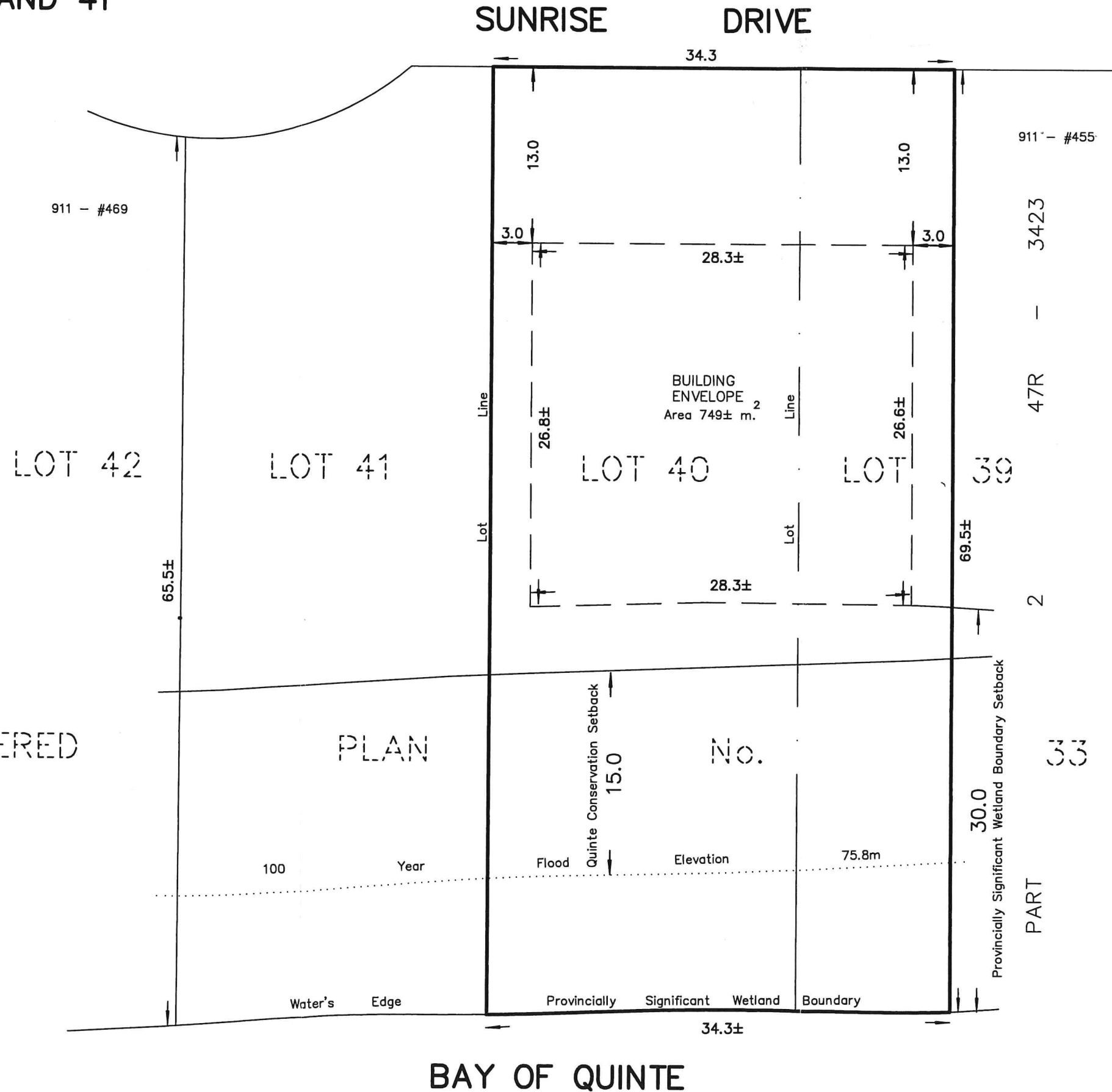
NOTES :

100 YEAR FLOOD ELEVATION OF 75.8m – PROVIDED BY QUINTE CONSERVATION

SETBACKS BASED ON PRINCE EDWARD COUNTY RR2-38 ZONE, PROVISIONS

- i. MINIMUM FRONT YARD 13.0m
- iii. MINIMUM INTERIOR SIDE YARD 3.0m

PROVINCIALY SIGNIFICANT WETLAND BOUNDARY IS THE WATER'S EDGE
 AND ITS SETBACK IS 30m AS PER QUINTE CONSERVATION



REGISTERED PLAN No.

218 CHURCH STREET
 BELLEVILLE, ONTARIO

WATSON
 LAND SURVEYORS Ltd.

K8N - 3C3
 (613) 962 - 9521

JANUARY 12, 2020

PROJECT No 12562-G-20