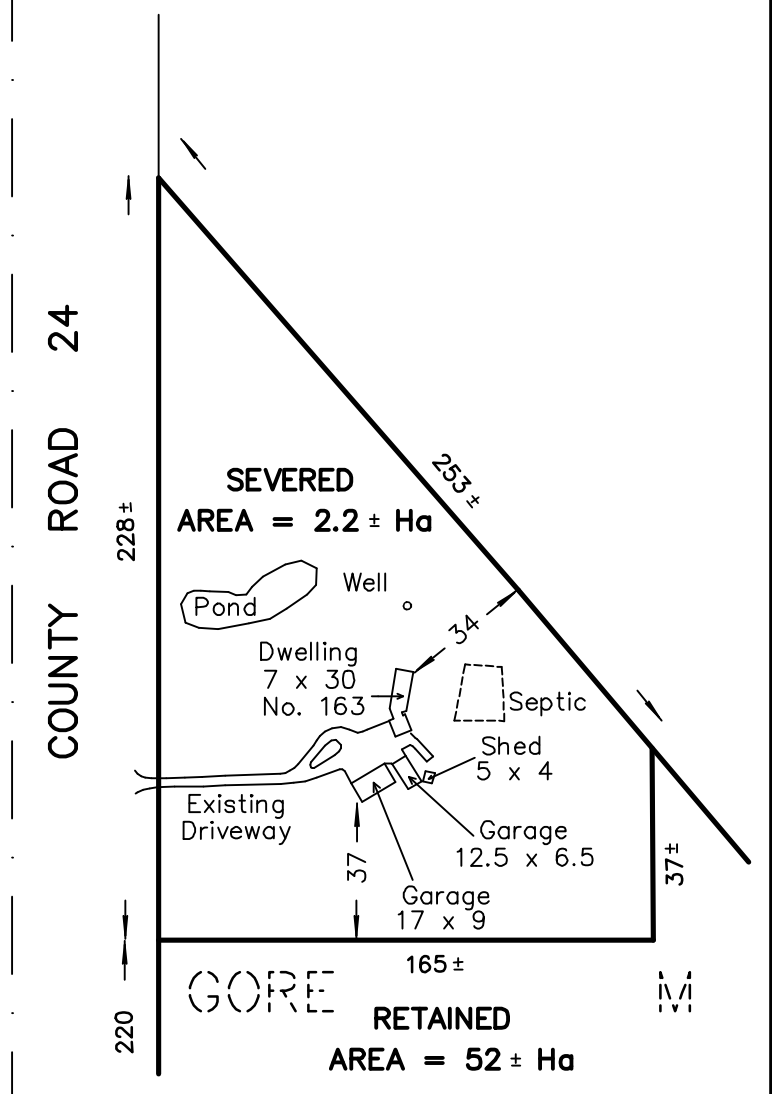
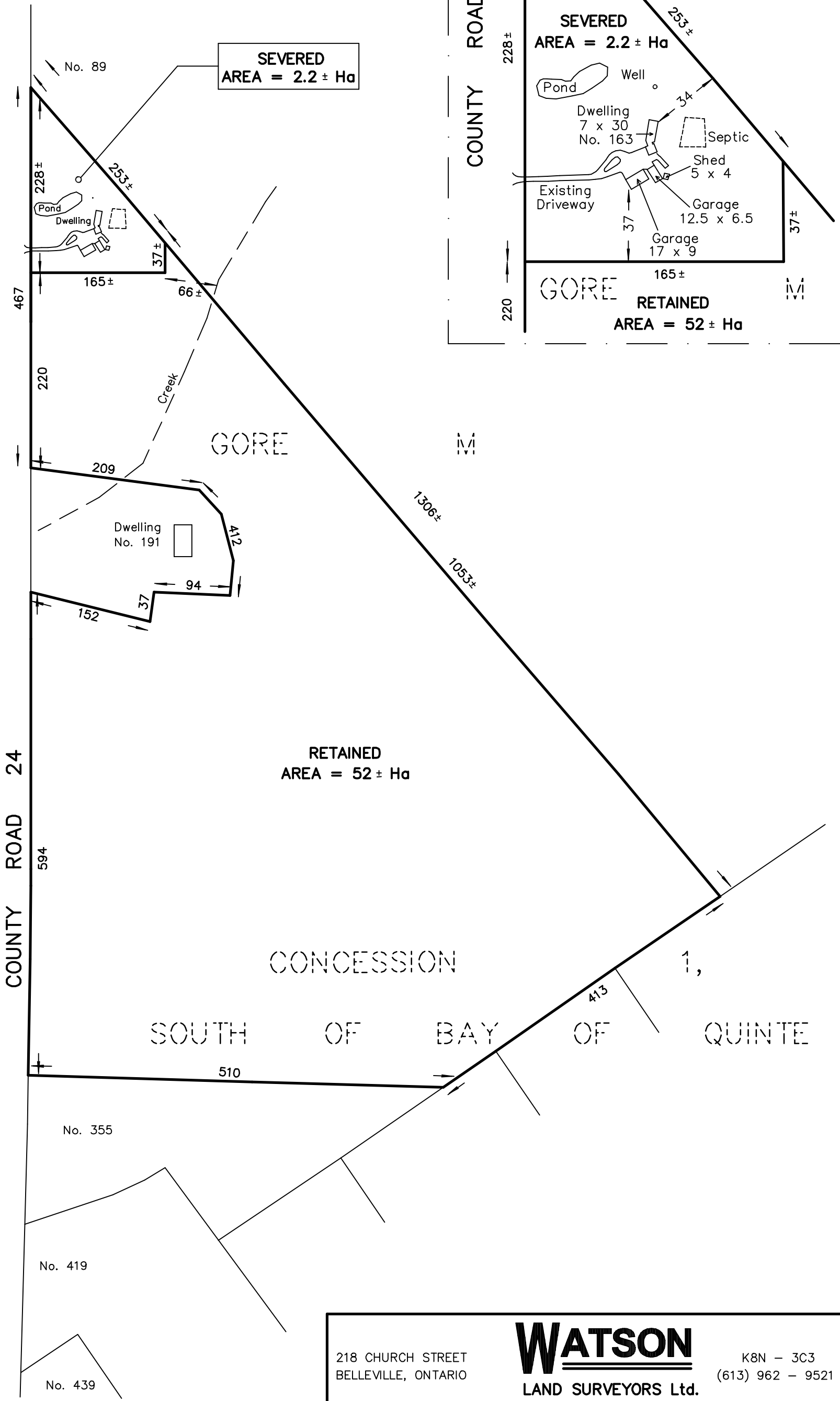
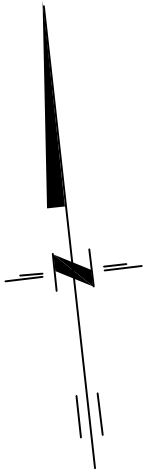


SKETCH
 PART OF GORE M
 CONCESSION 1, SOUTH OF BAY OF QUINTE
 TOWNSHIP OF NORTH MARYSBURGH
 NOW IN THE MUNICIPALITY OF
 THE COUNTY OF PRINCE EDWARD
 METRIC SCALE 1 : 5000



ORIGINAL ROAD ALLOWANC BETWEEN CONCESSIONS 1 SBQ AND 2 SBQ

218 CHURCH STREET BELLEVILLE, ONTARIO	WATSON LAND SURVEYORS Ltd.	K8N - 3C3 (613) 962 - 9521
MAY 18, 2021		PROJECT No 12880-H-21