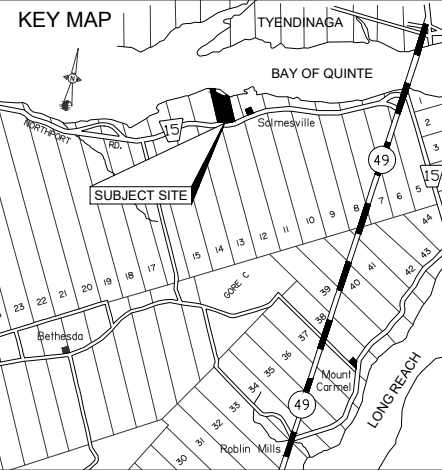


CONSENT SKETCH

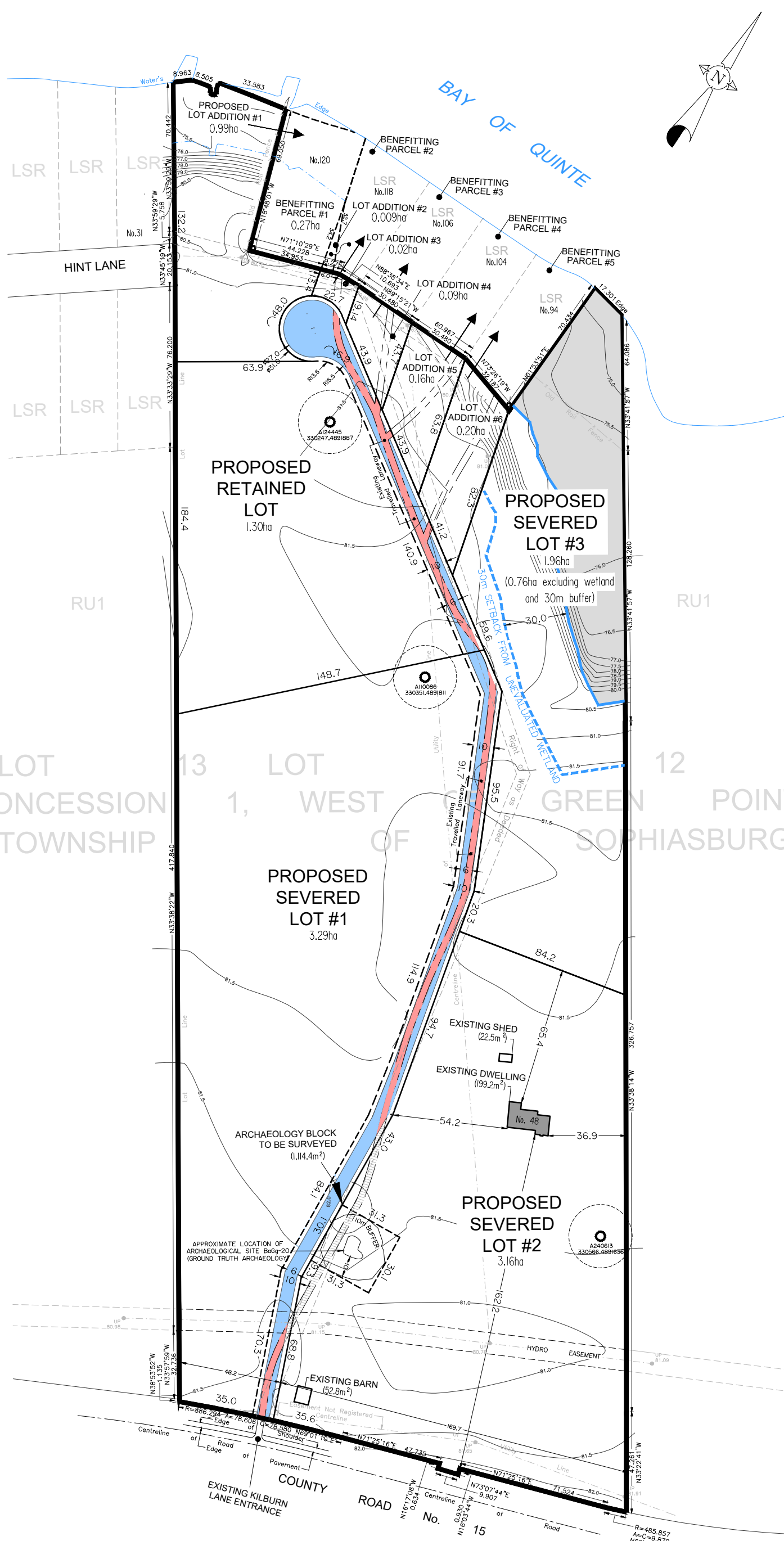
PART OF LOTS 12 & 13,
CONCESSION 1,
WEST OF GREEN POINT,
SOPHIASBURGH WARD,
MUNICIPALITY OF
PRINCE EDWARD COUNTY

SCALE 1:2,000



LEGEND

- EXISTING GRAVEL LANE WITHIN PROPOSED RIGHT-OF-WAY (1,369.2m²)
- PROPOSED 6m-WIDE GRAVEL LANE WITHIN PROPOSED RIGHT-OF-WAY (4,101.73m²)
- EXISTING GRAVEL LANE TO BE REMOVED
- UNEVALUATED WETLAND (SURVEYED BY JDH ENVIRONMENTAL SERVICES; NOVEMBER 2019)
- 30m SETBACK FROM EDGE OF BAY OF QUINTE
- EXISTING WELL + 15m SETBACK



METRIC NOTE:

DISTANCES SHOWN ON THIS PLAN ARE IN METRES AND CAN BE CONVERTED TO FEET BY DIVIDING BY 0.3048.

CONTOURS NOTE:

CONTOURS AND SURVEY SKETCH PREPARED BY B. ROGER PICKARD SURVEYING LTD. PORTIONS OF THIS SKETCH ARE PREPARED FROM COMPILED AND CALCULATED INFORMATION AND NOT FROM AN ACTUAL SURVEY.


PLAN COPYRIGHT

ALL ORIGINAL DRAWINGS AND RELATED DOCUMENTS ARE THE COPYRIGHT PROPERTY OF RFA PLANNING CONSULTANT INC. REPRODUCTION IN WHOLE OR IN PART IS FORBIDDEN WITHOUT THE PRIOR WRITTEN CONSENT OF RFA PLANNING CONSULTANT INC.

THESE DRAWINGS AND DOCUMENTS MAY NOT BE USED FOR ANY PURPOSES OTHER THAN FOR THE PROJECT FOR WHICH THEY ARE PREPARED. THE PLAN IS NOT AVAILABLE TO THIRD PARTY WITHOUT THE WRITTEN CONSENT OF RFA PLANNING CONSULTANT INC.

No.	CHANGES TO LOT ADDITION AREAS	NOV 19 21	SL
No.	CHANGES TO LOT ADDITION AREAS	OCT 28 21	SL
No.	REVISION	DATE	APPRD
DRAWN BY: AC/FM		CHECKED BY: S.L.	DATE: 12/10/20

NOVEMBER 19, 2021



RFA
PLANNING CONSULTANT INC.

211 Dundas Street East, Suite 202,
Belleville, Ontario, K8N 1E2