

GRANTOR'S NAME

ADDRESS

SEVERANCE SKETCH

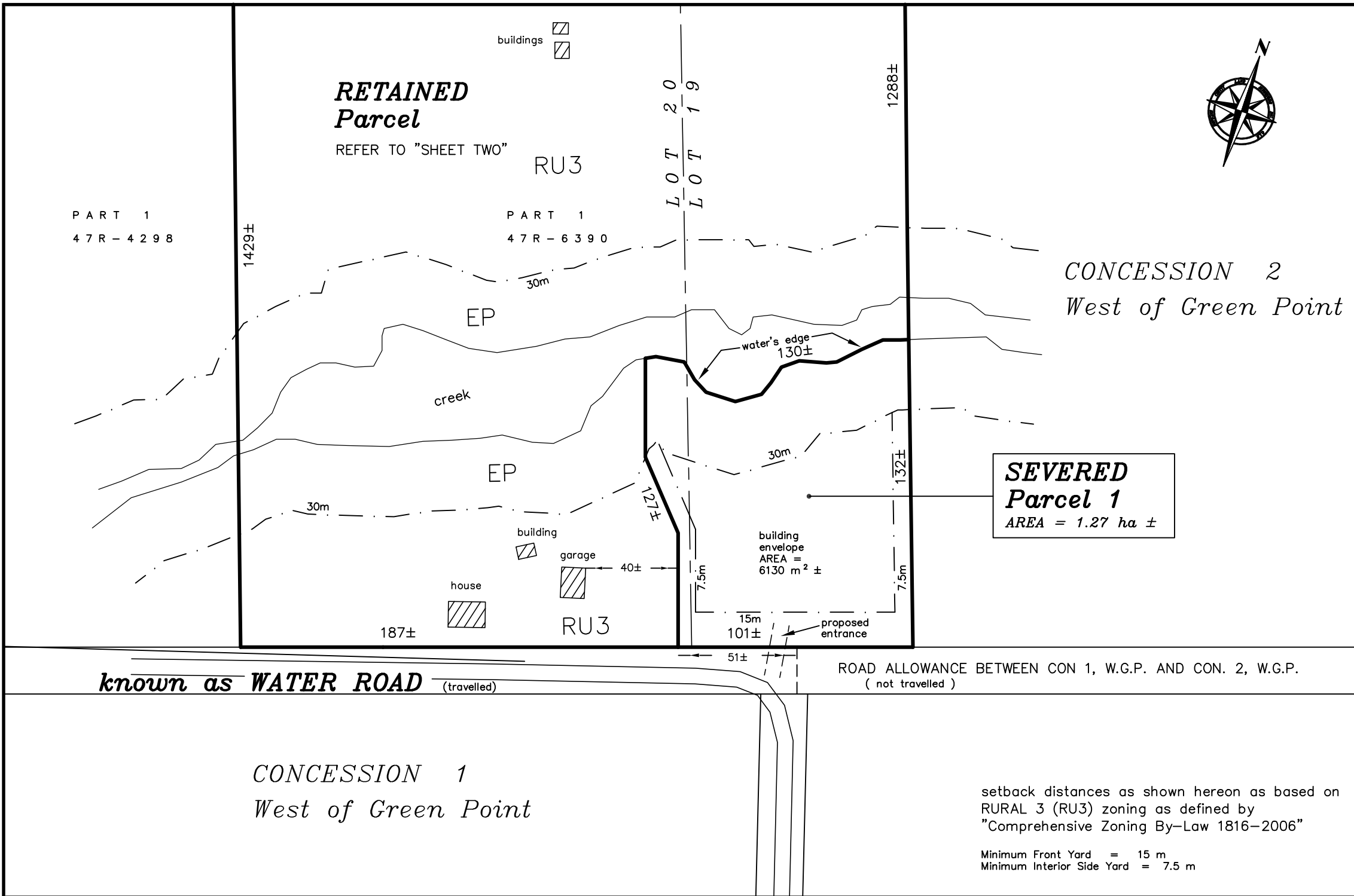
SHEET ONE

LOCATION Part of LOTS 19 & 20, CONCESSION 2, West of Green Point, Geographic Township of Sophiasburgh



CONCESSION 2
West of Green Point

**SEVERED
Parcel 1**
AREA = 1.27 ha ±



setback distances as shown hereon as based on
RURAL 3 (RU3) zoning as defined by
"Comprehensive Zoning By-Law 1816-2006"

Minimum Front Yard = 15 m
Minimum Interior Side Yard = 7.5 m

Hopkins Chitty Land Surveyors Inc.

2021-0412

**RETAINED
Parcel**

REFER TO "SHEET TWO"

RU3

PART 1
47R-4298

PART 1
47R-6390

LOT 19
LOT 20

1288±

1429±

30m

EP

water's edge
130±

creek

EP

30m

127±

132±

building

garage

building envelope
AREA =
6130 m² ±

house

40±

7.5m

proposed entrance

187±

RU3

15m

101±

51±

ROAD ALLOWANCE BETWEEN CON 1, W.G.P. AND CON. 2, W.G.P.
(not travelled)

known as WATER ROAD (travelled)

CONCESSION 1
West of Green Point