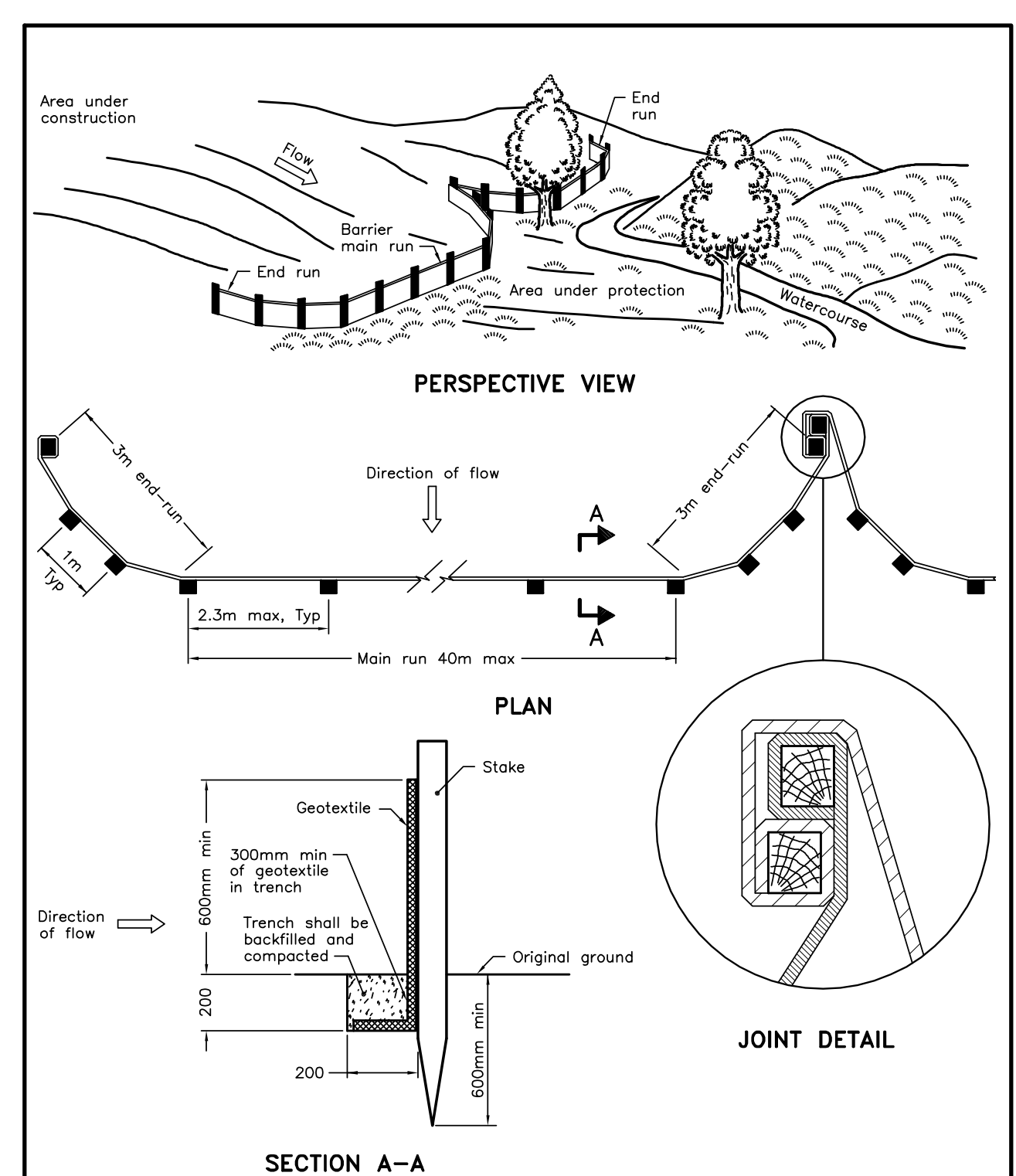




TREE INVENTORY TABLE

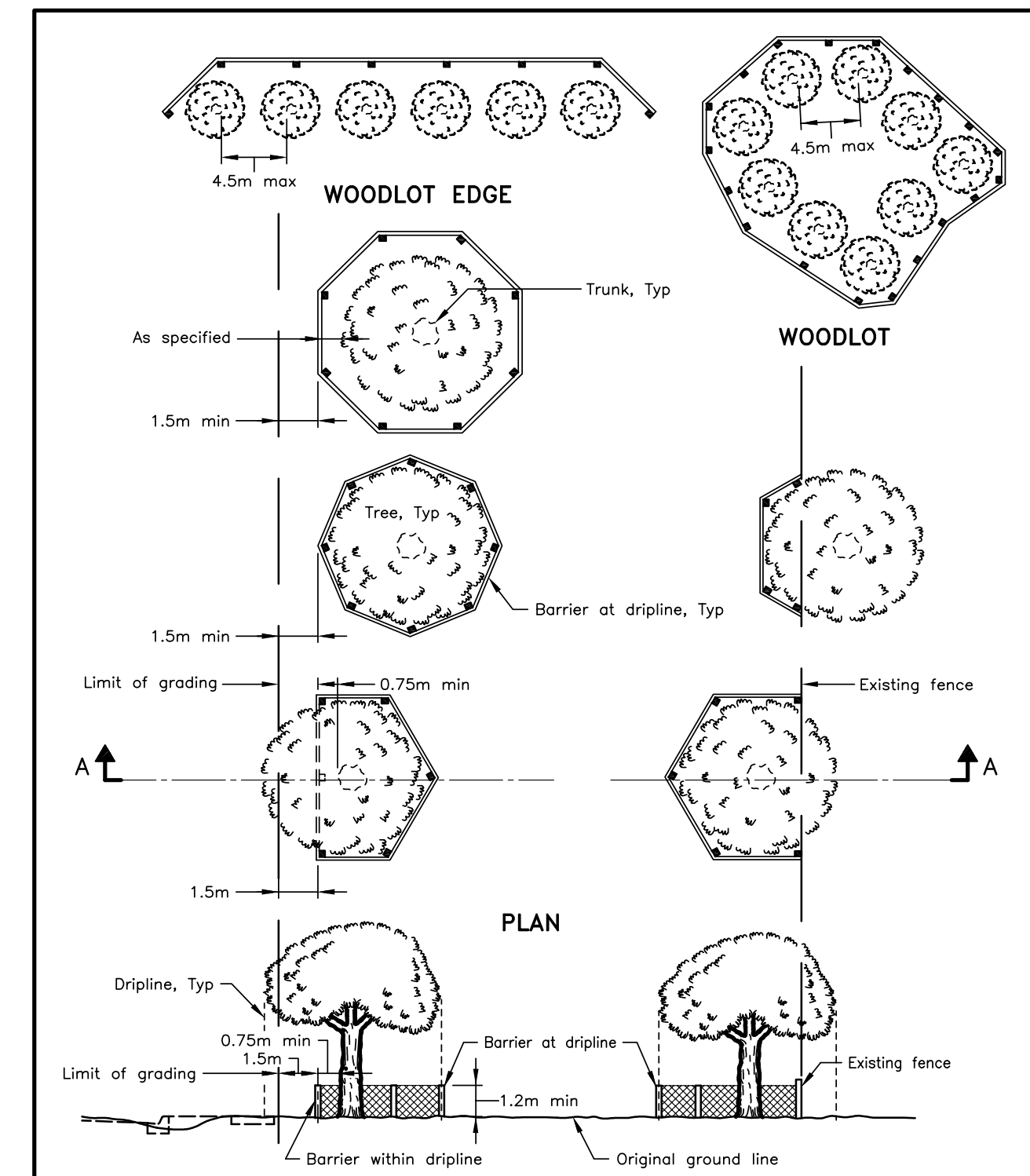
Tree No.	Species	Size	Condition	Action
1	Sugar Maple (<i>Acer saccharum</i>)	55cm DBH	Poor-Fair – decay in base, close proximity to new road	Remove – condition and development conflict
2	Sugar Maple (<i>Acer saccharum</i>)	38cm DBH	Good	Preserve – tree protection fence at greater of 3m TPZ from trunk or dripline, remove stones at base, prune dead branches
3	Sugar Maple (<i>Acer saccharum</i>)	17cm DBH	Good	Preserve – tree protection fence at greater of 1.5m TPZ from trunk or dripline
4	Sugar Maple (<i>Acer saccharum</i>)	44cm DBH	Good-Fair	Preserve – tree protection fence at greater of 3.5m TPZ from trunk or dripline, prune crossing and dead branches
5	15 ash (<i>Fraxinus</i> spp.), 1 eastern red cedar (<i>Juniperus virginiana</i>), buckthorn (<i>Rhamnus cathartica</i>)	10-20cm DBH	Good-Fair – self-propagated through field edge	Remove – development conflict
6	dominated by ash, 1 elm (<i>Ulmus</i> spp.) 25cm DBH, 1 norway maple suckers (<i>Acer platanoides</i>) 10/15cm DBH, 1 apple (<i>Malus</i> spp.) 6 stems 15-20cm DBH, 1 sugar maple 30cm DBH, 1 Norway maple 39cm DBH, eastern red cedar, understory dominated by buckthorn	10-25cm DBH	Fair-Good – 0.5 – 1.5m spacing	Remove – development conflict and condition
7	eastern red cedar, trembling aspen (<i>Populus</i> spp.), red osier dogwood shrubs (<i>Cornus sericea</i>), and ash saplings	5-15cm DBH	Good	Remove – development conflict
8	Manitoba maple (<i>Acer negundo</i>)	40cm DBH	Fair	Remove – development conflict
9	6 Norway maple	30-60cm DBH	Fair-Poor	Remove – development conflict and condition
10	~ 60 continuous row of ash	10-40cm DBH	Fair	Remove – development conflict and species
11	~50 ash	20-30cm DBH, 1-2m spacing	Fair	Remove – development conflict and species
12	~ 80 ash	20-40cm DBH, 1-2m spacing	Fair	Remove – mark new woodland edge in field and evaluate trees to remain, establish buffer and edge planting area - development conflict and species
13	Crack willow (<i>Salix fragilis</i>)	3 stems @ 70-80cm DBH	Fair – 1 stem failure and decay	Preserve – no anticipated impacts
14	Poplar (<i>Populus</i> spp.)	Row past ash 15-30cm DBH	Good	Preserve – no anticipated impacts

*Grey rows indicate areas to be preserved



ONTARIO PROVINCIAL STANDARD DRAWING Nov 2015 Rev 2
LIGHT-DUTY SILT FENCE BARRIER
 OPSD 219.110

TREE PROTECTION FENCE PER OPSD 219.110



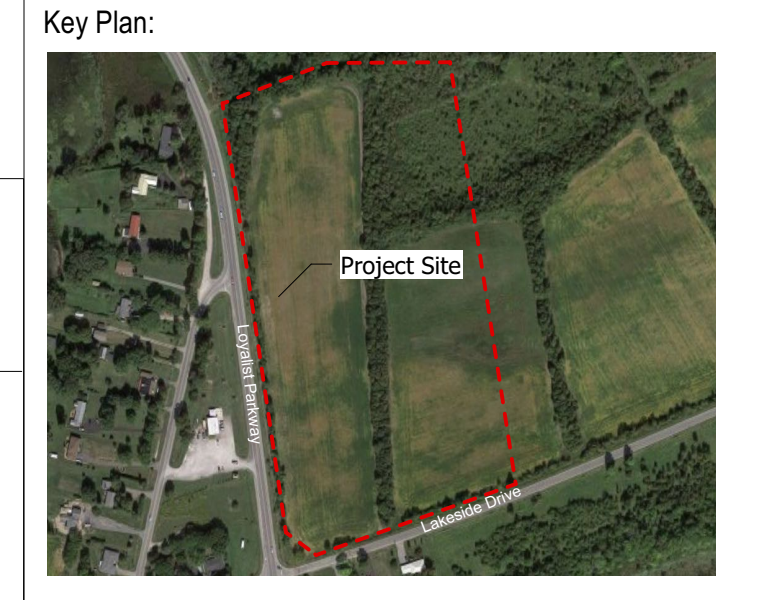
ONTARIO PROVINCIAL STANDARD DRAWING Nov 2019 Rev 1
BARRIER FOR TREE PROTECTION
 OPSD 220.010

Tree Inventory and Preservation based on field assessment by ISA Certified Arborist, Gina Brouwer (ON-0937A) carried out on December 2, 2021. Refer to Arborist Report dated December 20, 2021.

TREE PROTECTION NOTES
 The Owner or Owner's agents shall take every precaution necessary to prevent damage to trees to be retained. Prior to commencement of any site activity, tree protection shall be installed. Trees in proximity to construction shall have tree protection fencing measures well beyond the drip line to prevent damage that could result from grading, excavation, construction traffic, parking, or material storage. Tree protection fencing shall remain intact until all site activities, including landscaping, are complete. Tree protection fencing shall be a minimum 1.2 (4') hoarding (i.e. snow fencing) installed as per OPSD 220.010 in addition to or along with light damage to roots. Areas within the tree protection fencing shall remain undisturbed and shall not be used for storage of materials or equipment. No grade changes shall be permitted within the tree protection fencing. Surplus soil, equipment, debris or materials shall not be placed over the root systems of the trees within the tree protection areas. No contaminants shall be dumped or flushed on site.

Prior to site disturbance, the Owner and Contractor must ensure work is in conformance with the Migratory Bird Convention Act.

WOODLAND EDGE MANAGEMENT NOTES
 1. Minimize disturbance widths wherever possible by reducing temporary working easements, limiting equipment storage areas and vehicle turning points to open areas dominated by exotic species, and reducing footprints.
 2. Tree protection fencing shall be installed beyond the woodland edge dripline to be retained. The location of tree protection fence shall be confirmed on site. Herb and shrub layer shall be left intact wherever possible.
 3. Where feasible, stumps within 5m of the new edge should not be grubbed to allow groundcover regeneration from the undisturbed seedbank.
 4. Native woody material removed and chipped may be used as mulch for restoration plantings.
 5. Grading shall be designed to meet existing grades minimum of 3m away from the tree dripline in order to prevent root damage. All efforts to maintain pre-construction soils and seed bank shall be employed, except in areas with heavy invasion by exotic species.
 6. Drainage patterns adjacent to the new edge shall be maintained to avoid changes in soil moisture resulting from concentration/redirection of flows.
 7. Dead trees should be retained for wildlife benefits. Pruning for reduction and removal of dead limbs shall be carried out to mitigate risk.



Legend:

- TPZ ID DBH: Existing Deciduous Trees to be Retained
- Tree Protection Zone Fencing
- Existing Tree(s) to be Removed
- Hedgerow/Woodland Edge

No.	Description	Date	By
1	Issued for Review	21.12.20	GB

Issue / Revision Schedule



Disclaimer:
 All drawing information shall be checked and verified and any discrepancies reported in writing to the Designer before commencing any affected work. This drawing shall be used only for the project named on this drawing and for reference purposes only. This drawing shall not be scaled. This drawing is not for construction unless signed by the Designer. This drawing and all aspects of its content are the copyright property of Tropic Design. Reproduction in whole or in part, by any means whatsoever, without the express written permission of Tropic Design, is prohibited.

Client:
George Marchi

Project:
**Lakeside Estates
 Consecn, ON**

Drawing Title:
**Tree Inventory and
 Preservation Plan**

Designed By: GB Project #: 21.41
 Drawn By: GB Drawing #: **T1.1**
 Approved By: GB
 Date: 21/12/09