

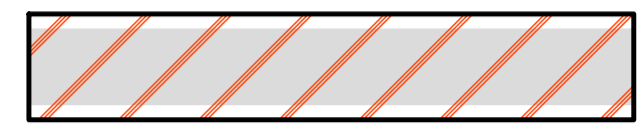
Picton Main Street Reconstruction

Construction: July 4th, 2022 - November 18th, 2022

Detour Phase 3: August 15th - September 1st

- Bridge Street to Paul Street and Intersection - Full Closure

Legend



Road Closure



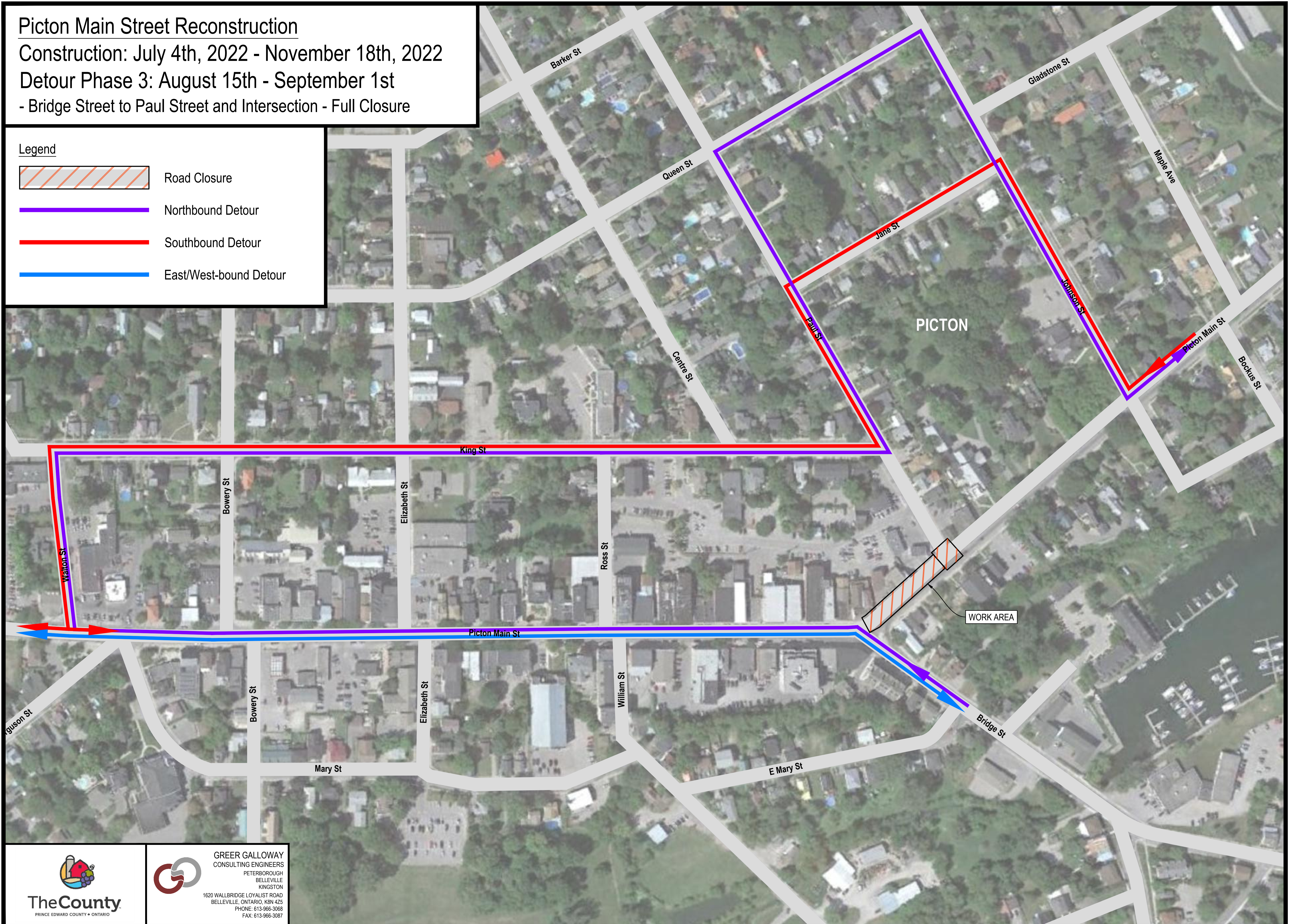
Northbound Detour



Southbound Detour



East/West-bound Detour



PICTON

WORK AREA



GREER GALLOWAY
CONSULTING ENGINEERS
PETERBOROUGH
BELLEVILLE
KINGSTON
1620 WALLBRIDGE LOYALIST ROAD
BELLEVILLE, ONTARIO, K8N 4Z5
PHONE: 613-966-3068
FAX: 613-966-3087