

**SITE PLAN LEGEND**

- PROPOSED TREE
- EXISTING TREE
- PLANT BED
- EXISTING BUILDING
- GRASS SURFACE
- GRAVEL SURFACE
- RISE ROUTE
- STANDARD PARKING SPACE 2.0M X 5M
- ACCESSIBLE PARKING SPACE 3.0M X 5M
- RISE HYDRANT

REFER TO LANDSCAPE DRAWINGS



**Project**  
**THE EDDIE HOTEL & FARM**

**Location**  
**15786 LOYALIST PARKWAY, BLOOMFIELD, ON K0K 1G0**

**Project No.** 12582

**Client**  
**MONIK PLANNING & DEVELOPMENT**  
 179 St George Street, Toronto, ON M5E 0J7

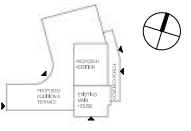
**City Engineer**  
**GREER GALLOWAY**  
 680 Galloway Woods Drive #20, Niagara, ON L2P 2T6

**Associated Engineer**  
**THORNTON TOMASETTI**  
 131 Bankton Avenue, Suite 101, Toronto, ON M1R 2B5

**Associated Architect**  
**JANET ROSENBERG & STUDIO**  
 145 Karamcol Avenue, York, ON M3C 2S5

**Architect**  
**NEUF Architects Inc.**  
 6 Mavel Street, Suite 103, Toronto, ON M5E 1A5

- GENERAL NOTES**
1. These architectural documents are the exclusive property of NEUF Architects and cannot be used, copied or reproduced without written consent of NEUF.
  2. All dimensions which appear on the documents must be verified by the contractor before the start of work.
  3. The architect must be notified of all errors, omissions and discrepancies between these documents and those of the other professionals.
  4. The dimensions of these documents must be read and checked carefully.



**Project**  
**THE EDDIE HOTEL & FARM**

**Location**  
**15786 LOYALIST PARKWAY, BLOOMFIELD, ON K0K 1G0**

**Project No.** 12582

**NO. REVISION**      **DATE (dd-m-yy)**

*Preliminary  
 DO NOT USE FOR  
 CONSTRUCTION*

**Drawn by:** Auditor      **Checked by:** Checker

**DATE (gg/mm/yy)** 06/03/22      **Scale:** As indicated

**Proposed Road and Parking Layout**

**Reason:**      **Drawn Number:** SPCA-2

C:\EPlan\Revit\Local\SPCA\_2\SPCA\_2\SPCA\_2\SPCA\_2.dwg