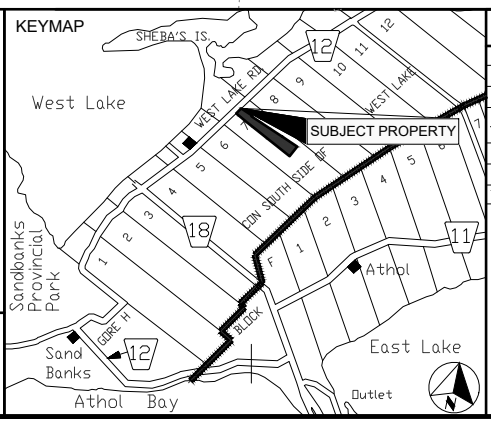


PRELIMINARY SITE PLAN
DUNE HOPPER BREWERY
 LOT 28, RCP 27, EXCEPT PT 2, 47R2886
 WARD OF HALLOWELL
 MUNICIPALITY OF THE
 COUNTY OF PRINCE EDWARD

SCALE = 1:2000 METRIC
 JULY 7, 2022

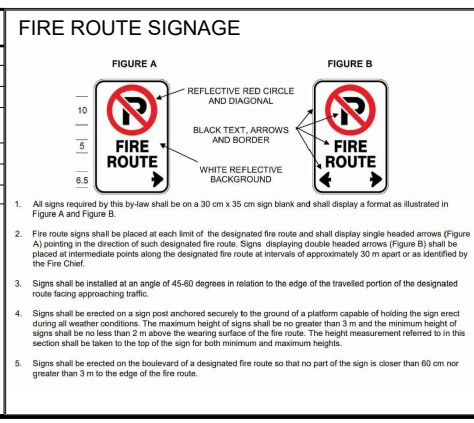


LAND USE SUMMARY

LANDUSE	AREA (m²)	AREA (%)
EXISTING DWELLING	193.4	0.3
EXISTING DRIVEWAY	169.2	0.2
PROPOSED BREWERY AND TASTING ROOM/RETAIL SPACE	223.3	0.3
PARKING LOT/DRIVEWAY	1035	1.5
OPEN SPACE	68,806.1	97.7
TOTAL SITE AREA	70,427m²	100.0%

LEGEND

- EXISTING DRIVEWAY
- PROPOSED DRIVEWAY AND PARKING
- PROPOSED WALKWAY
- PROPOSED CEDAR RAIL FENCE
- FIRE ROUTE SIGNAGE



METRIC NOTE:
 DISTANCES SHOWN ON THIS PLAN ARE IN METRES AND CAN BE CONVERTED TO BY DIVIDING BY 0.3048.

PLAN COPYRIGHT
 ALL ORIGINAL DRAWINGS AND RELATED DOCUMENTS ARE THE COPYRIGHT PROPERTY OF RFA PLANNING CONSULTANT INC. REPRODUCTION IN WHOLE OR IN PART IS FORBIDDEN WITHOUT THE PRIOR WRITTEN CONSENT OF RFA PLANNING CONSULTANT INC.

THESE DRAWINGS AND DOCUMENTS MAY NOT BE USED FOR ANY PURPOSES OTHER THAN FOR THE PROJECT FOR WHICH THEY ARE PREPARED. THE PLAN IS NOT AVAILABLE TO THIRD PARTY WITHOUT THE WRITTEN CONSENT OF RFA PLANNING CONSULTANT INC.

JULY 7, 2022

211 Dundas Street East, Suite 202, Belleville, Ontario, K8N 1E2

3
2
1

No.	REVISION	DATE	APPR'D
1			

DRAWN BY: F.M. CHECKED BY: S.L. DATE: JULY 7, 2022 SCALE: 1:2000

JOB No. 807 - PSP