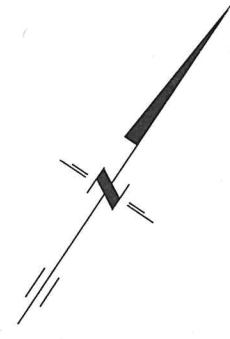
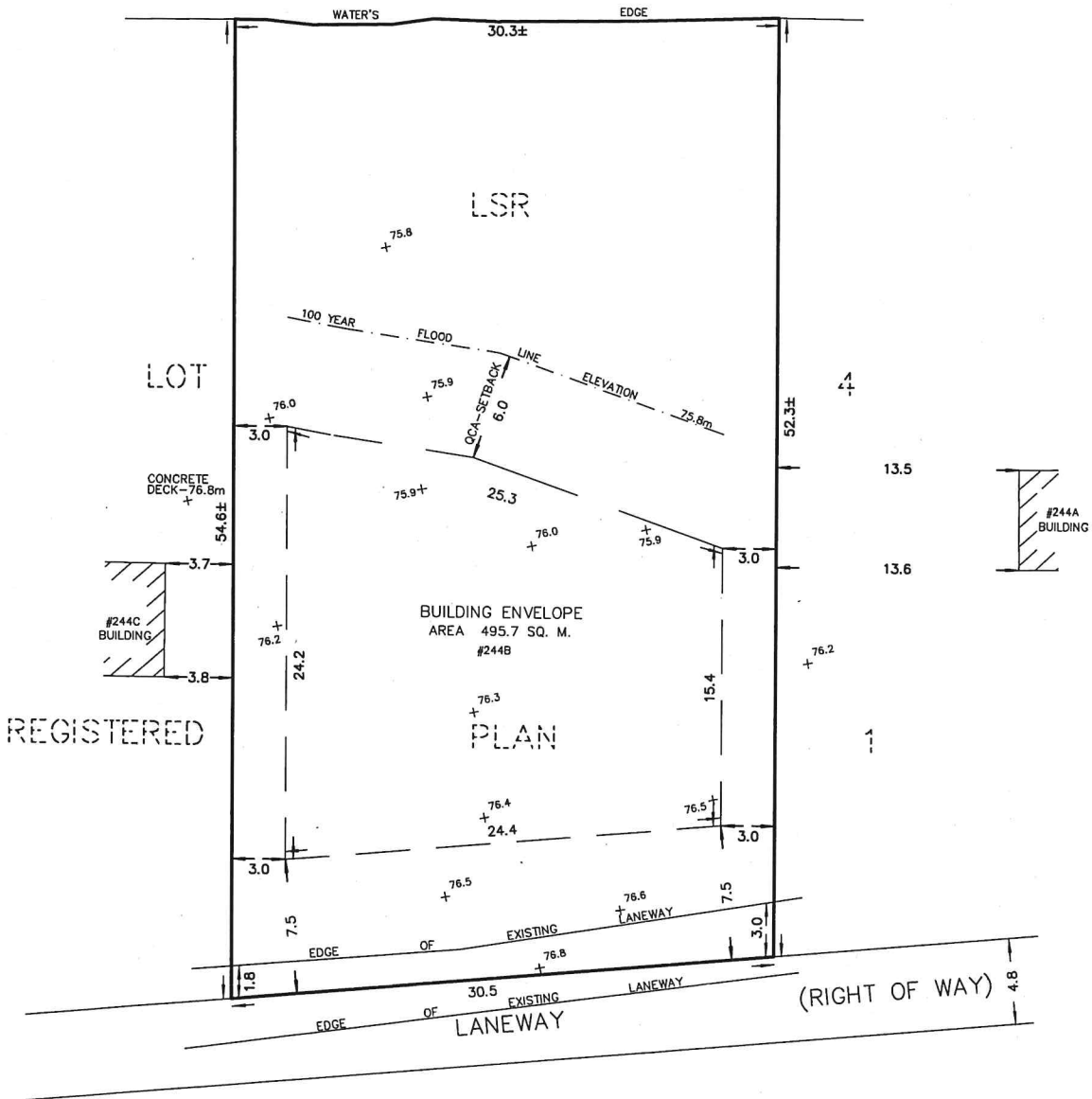


SKETCH
 PART OF LOT 4
 REGISTERED PLAN 1
 TOWNSHIP OF HILLIER
 NOW IN THE MUNICIPALITY OF
 THE COUNTY OF PRINCE EDWARD
 METRIC SCALE 1 : 250



WELLER'S BAY



NOTES :

- 100 YEAR FLOOD ELEVATION PER QUINTE CONSERVATION - 75.8m
- 100 YEAR FLOOD LINE ELEVATION SETBACK - 6M PER QUINTE CONSERVATION (QCA)
- PROPERTY ZONE - LIMITED SERVICE RESIDENTIAL (LSR)
- LSR SETBACKS APPLIED PER PRINCE EDWARD COUNTY
- (i) MINIMUM FRONT YARD - 7.5M
- (ii) MINIMUM SIDE YARD - 3M

METRIC :

DISTANCES SHOWN ON THIS PLAN ARE IN METRES
 AND CAN BE CONVERTED TO FEET BY DIVIDING BY 0.3048.

218 CHURCH STREET BELLEVILLE, ONTARIO	WATSON LAND SURVEYORS Ltd.	K8N - 3C3 (613) 962 - 9521
	OCTOBER 04, 2021	