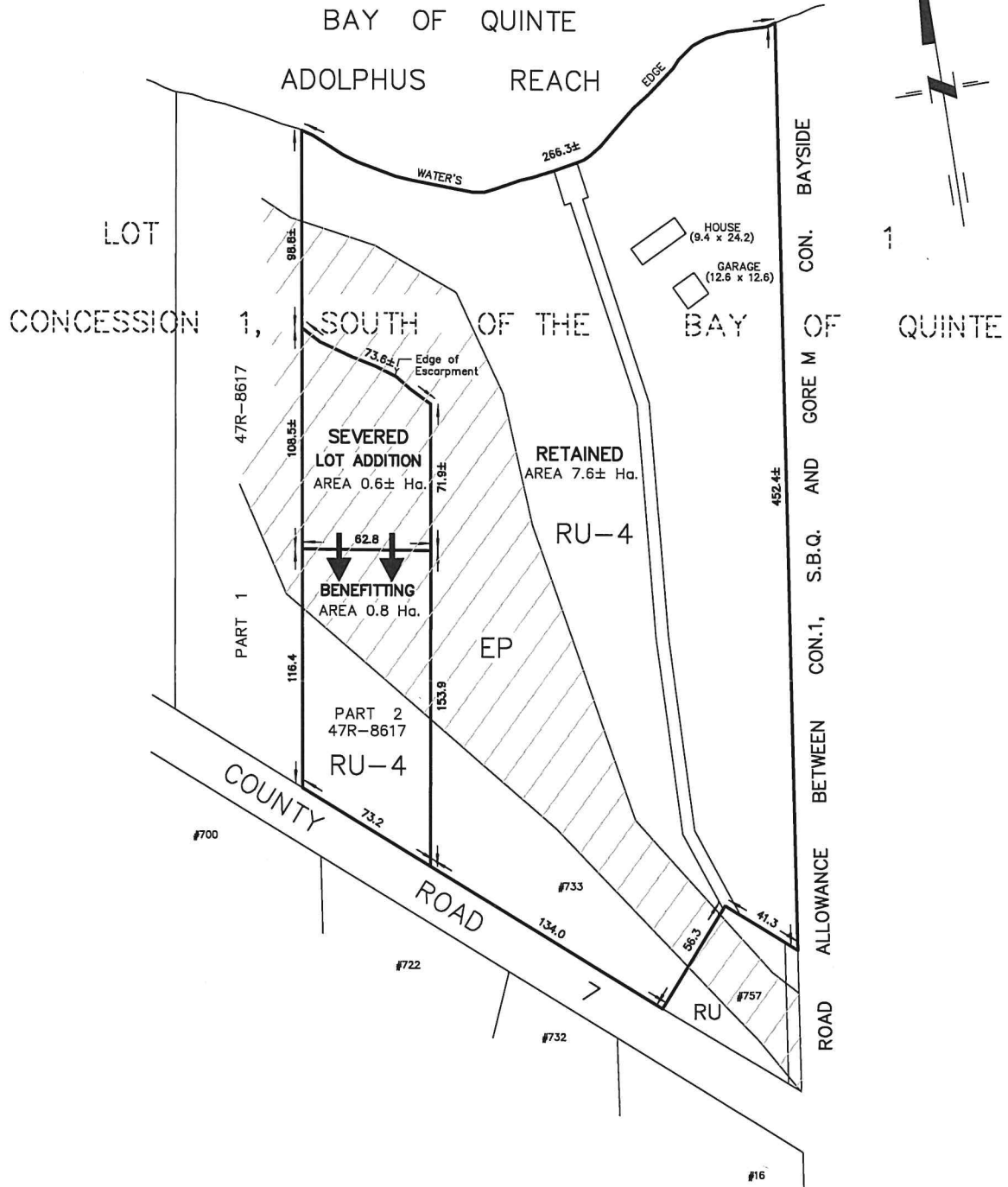


# SKETCH for SEVERANCE APPLICATION

METRIC SCALE 1 : 2000



**NOTES :**

COUNTY ROAD 7

PART OF LOT 1  
 CONCESSION 1, SOUTH OF THE BAY OF QUINTE  
 TOWNSHIP OF NORTH MARYSBURGH  
 NOW IN THE MUNICIPALITY OF THE  
 COUNTY OF PRINCE EDWARD

DIMENSIONS AND INFORMATION SHOWN ARE DERIVED FROM  
 PLANS 47R-2051, 47R-8617 AND MUNICIPAL RESOURCES.

DISTANCES SHOWN ON THIS PLAN ARE IN METRES  
 AND CAN BE CONVERTED TO FEET BY DIVIDING BY 0.3048.

THIS SKETCH IS AN ORIGINAL IF EMBOSSED BY THE SURVEYOR'S SEAL.

MARCH 22, 2022

**CAUTION**

THIS IS NOT A PLAN OF SURVEY AND SHALL NOT BE USED  
 EXCEPT FOR THE PURPOSE INDICATED IN THE TITLE BLOCK

218 CHURCH STREET  
 BELLEVILLE, ONTARIO

**WATSON**  
 LAND SURVEYORS Ltd.

K8N - 3C3  
 (613) 962 - 9521