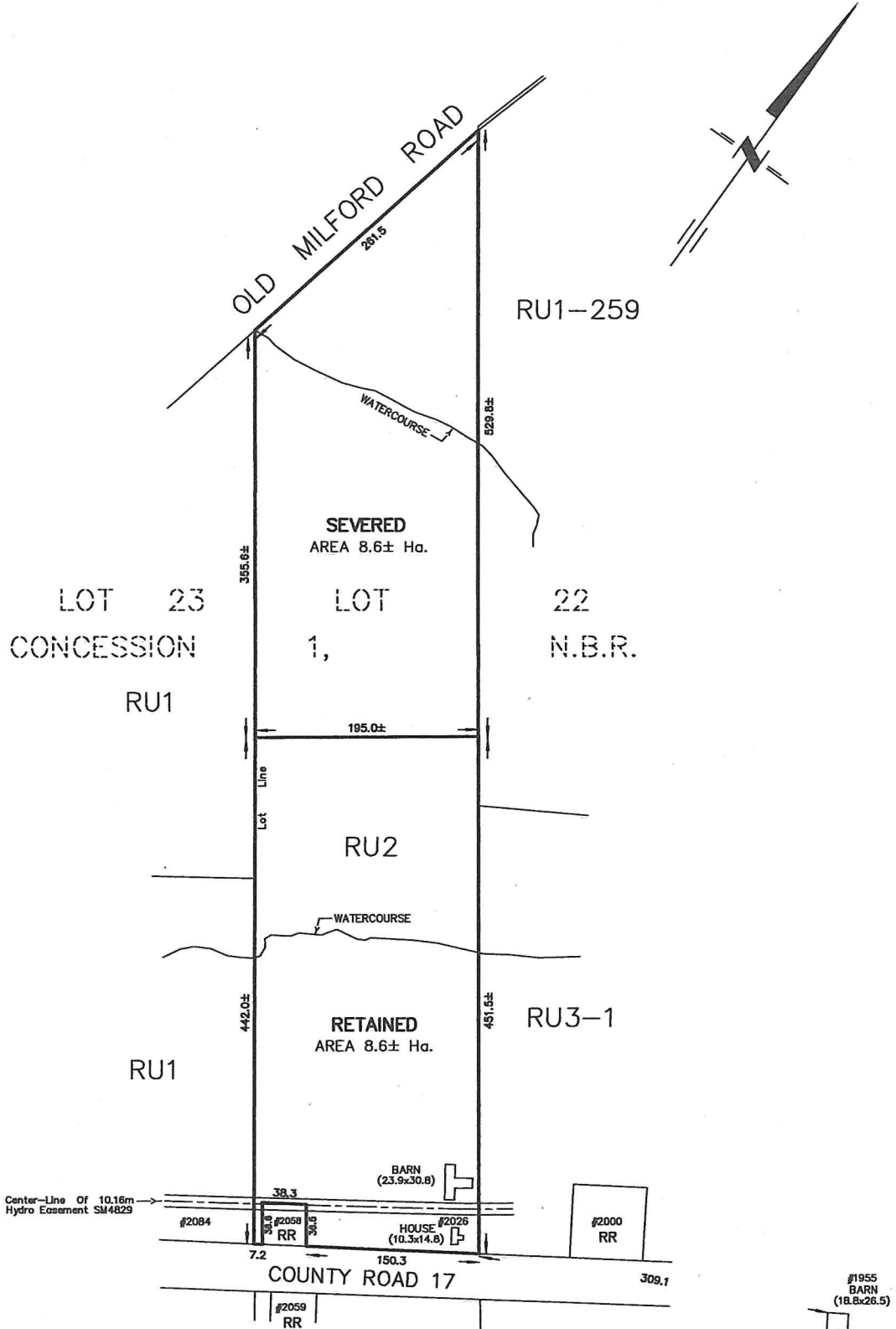


SKETCH for SEVERANCE APPLICATION

METRIC SCALE 1 : 3500



NOTES :

2026 COUNTY ROAD 17
 PART OF LOT 22
 CONCESSION 1, NORTH OF BLACK RIVER
 TOWNSHIP OF SOUTH MARYSBURGH
 NOW IN THE MUNICIPALITY OF THE
 COUNTY OF PRINCE EDWARD

DIMENSIONS AND INFORMATION SHOWN ARE DERIVED FROM PLANS 47R-1590
 47R-2333, 47R-6297, 47R-9190 AND MUNICIPAL RESOURCES.

DISTANCES SHOWN ON THIS PLAN ARE IN METRES
 AND CAN BE CONVERTED TO FEET BY DIVIDING BY 0.3048.

THIS SKETCH IS AN ORIGINAL IF EMBOSSED BY THE SURVEYOR'S SEAL.

MAY 31, 2022

CAUTION

THIS IS NOT A PLAN OF SURVEY AND SHALL NOT BE USED
 EXCEPT FOR THE PURPOSE INDICATED IN THE TITLE BLOCK

218 CHURCH STREET
 BELLEVILLE, ONTARIO

WATSON
 LAND SURVEYORS Ltd.

K8N - 3C3
 (613) 962 - 9521

© Copyright WATSON LAND SURVEYORS LTD. 2022

PROJECT N^o 13588-T-21