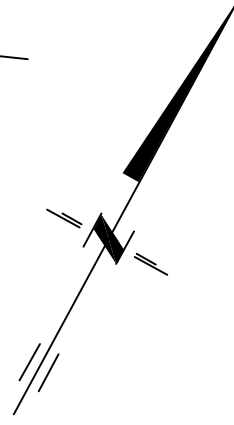
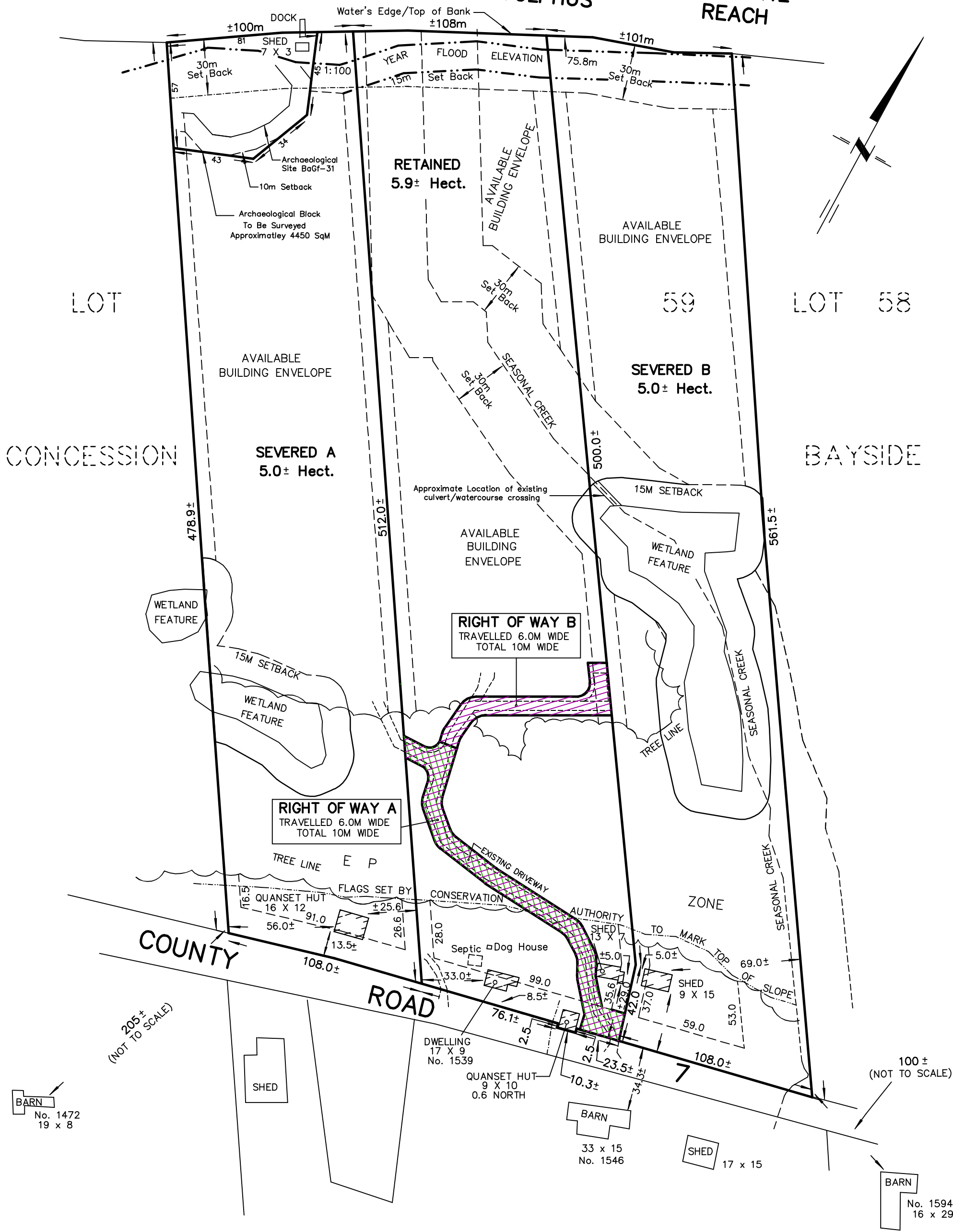


# SKETCH

METRIC SCALE 1 : 2000

PART OF LOT 59  
 CONCESSION BAYSIDE  
 TOWNSHIP OF NORTH MARYSBURGH  
 NOW IN THE MUNICIPALITY OF  
 THE COUNTY OF PRINCE EDWARD

BAY OF ADOLPHUS OF QUINTE REACH



### LEGEND FOR RIGHT OF WAYS

**RIGHT OF WAY A**  
 APPROXIMATELY  
 10m WIDE, 220m LONG, 2200sq.m. AREA

**RIGHT OF WAY B**  
 APPROXIMATELY  
 10m WIDE, 320m LONG, 3200sq.m. AREA

218 CHURCH STREET  
 BELLEVILLE, ONTARIO

**WATSON**  
 LAND SURVEYORS Ltd.

K8N - 3C3  
 (613) 962 - 9521

September 2, 2022

PROJECT No 11693-S-19