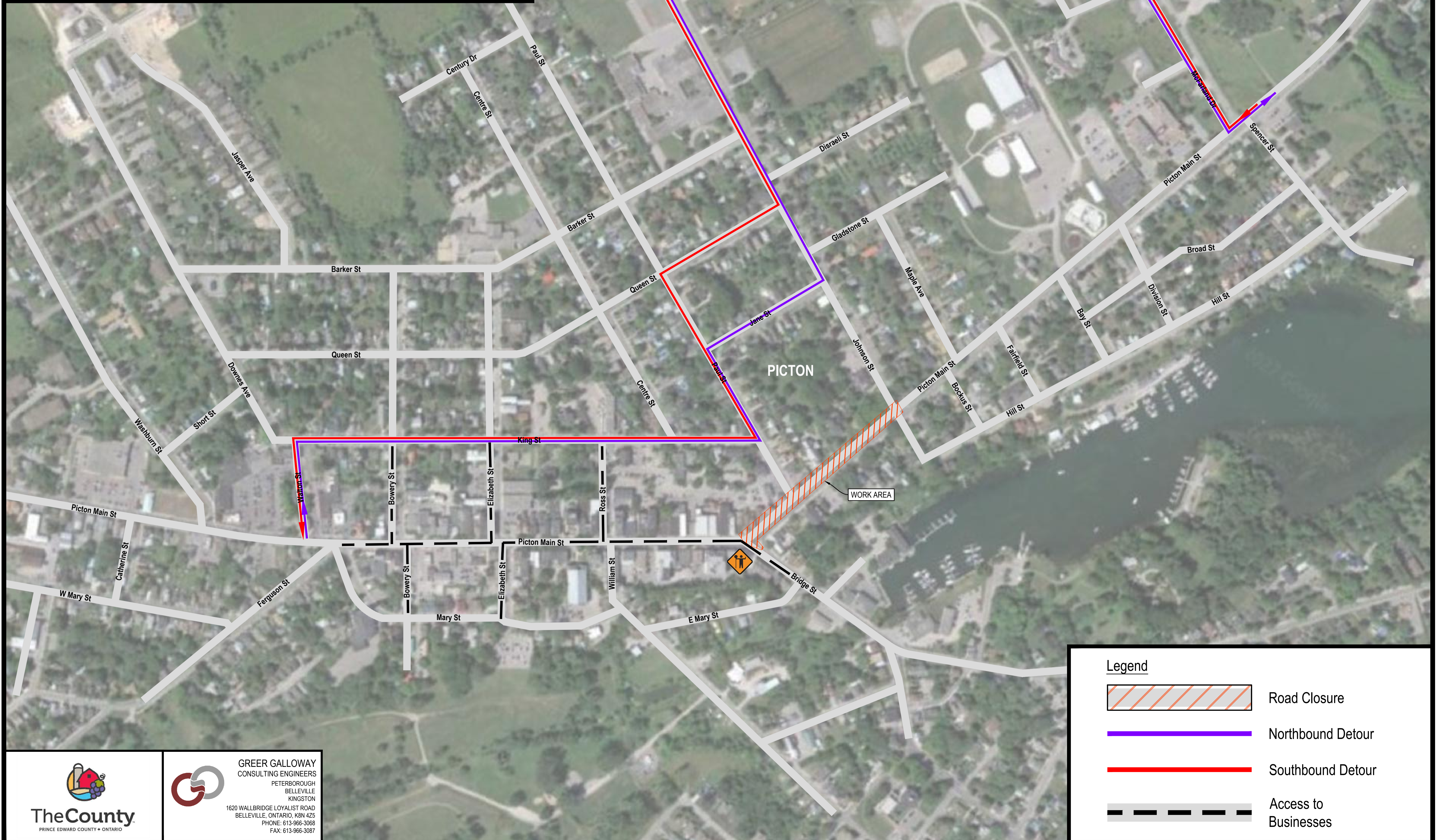






Picton Main Street Reconstruction

Top Course Asphalt / Pavement Markings Detour

- Johnson Street and Paul Street Intersections - Full Closure
- Bridge Street Intersection - Partial Closure



Legend

-  Road Closure
-  Northbound Detour
-  Southbound Detour
-  Access to Businesses



GREER GALLOWAY
CONSULTING ENGINEERS
PETERBOROUGH
BELLEVILLE
KINGSTON
1620 WALLBRIDGE LOYALIST ROAD
BELLEVILLE, ONTARIO, K8N 4Z5
PHONE: 613-966-3068
FAX: 613-966-3087