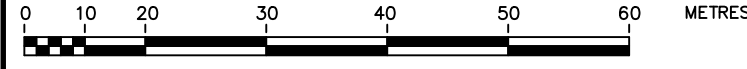


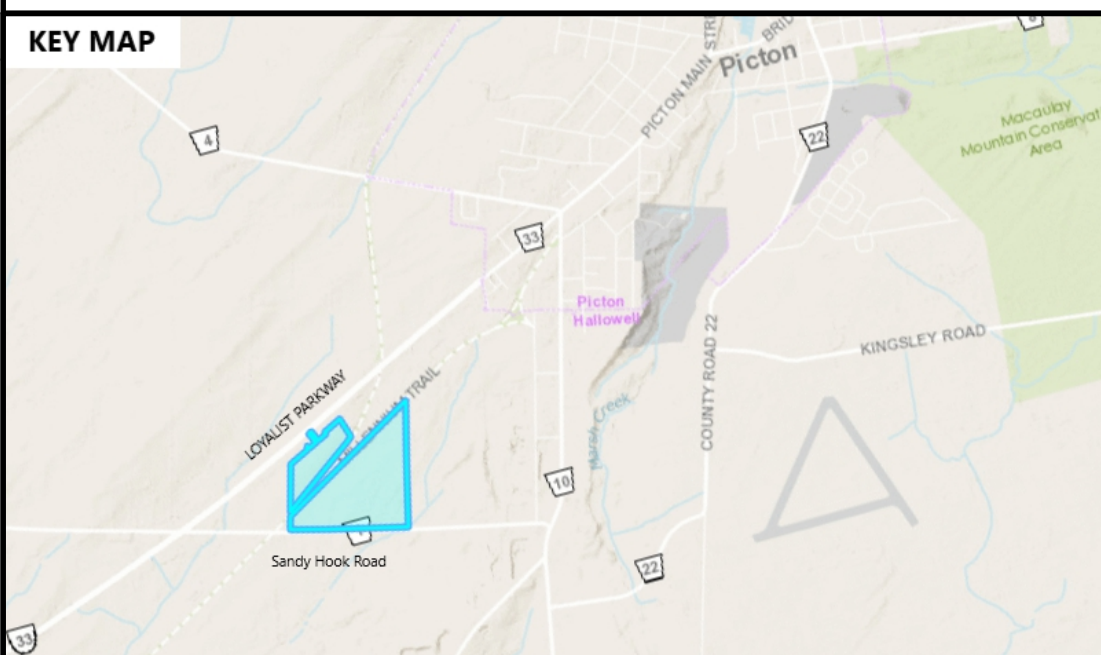
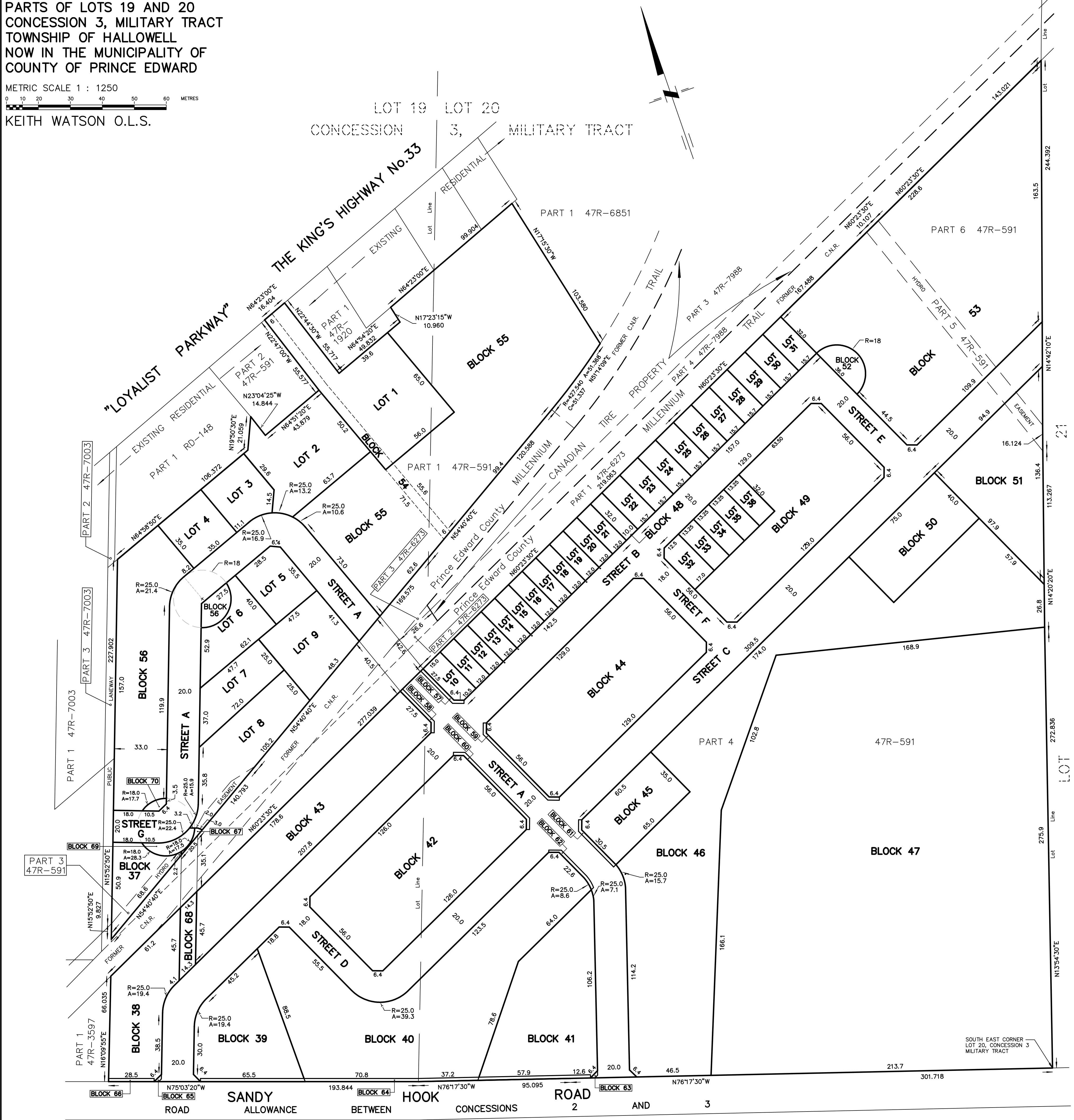
DRAFT PLAN OF SUBDIVISION

PARTS OF LOTS 19 AND 20
CONCESSION 3, MILITARY TRACT
TOWNSHIP OF HALLOWELL
NOW IN THE MUNICIPALITY OF
COUNTY OF PRINCE EDWARD

METRIC SCALE 1 : 1250



KEITH WATSON O.L.S.



LAND USE SCHEDULE		
PROPERTY LAND ALLOCATION	PART	AREA
RESIDENTIAL DEVELOPMENT	BLOCKS 37-45, 49-51, 53, 55, 56	11.9 Ha.
RESIDENTIAL LARGE LOTS	LOTS 1-9	2.0 Ha.
RESIDENTIAL LOTS	LOTS 10-36	1.2 Ha.
STREETS	A,B,C,D,E,F,G,H	3.9 Ha.
STORMWATER POND	BLOCK 46	2.0 Ha.
EP	BLOCK 47	5.4 Ha.
PUBLIC PATHWAYS	BLOCK 48	0.0 Ha.
SERVICING BLOCK-EASEMENT	BLOCK 54	0.1 Ha.
TEMPORARY TURNING AREA	BLOCKS 52, 56, 69, 70	0.0 Ha.
MUNICIPAL RESERVES	BLOCKS 57-67	0.0 Ha.
EMERGENCY ACCESS TRAIL	BLOCK 68	0.0 Ha.
TOTAL AREA OF PROPERTY		25.9 Ha.

ADDITIONAL INFORMATION REQUIRED UNDER SECTION 51(17) OF THE PLANNING ACT			
(a) SEE SURVEYOR'S CERTIFICATE	(g) AS SHOWN ON DRAFT PLAN	(h) TO BE DETERMINED	(i) TO BE DETERMINED
(b) AS SHOWN ON DRAFT PLAN	(j) AS SHOWN ON DRAFT PLAN	(k) TO BE DETERMINED	(l) AS SHOWN ON DRAFT PLAN
(c) AS SHOWN ON DRAFT PLAN	(m) TO BE DETERMINED	(n) TO BE DETERMINED	(o) AS SHOWN ON DRAFT PLAN
(d) SEE LAND USE SCHEDULE	(p) TO BE DETERMINED	(q) TO BE DETERMINED	(r) AS SHOWN ON DRAFT PLAN
(e) SEE DRAFT PLAN	(s) TO BE DETERMINED	(t) TO BE DETERMINED	(u) AS SHOWN ON DRAFT PLAN
(f) AS SHOWN ON DRAFT PLAN	(v) TO BE DETERMINED	(w) TO BE DETERMINED	(x) AS SHOWN ON DRAFT PLAN

SURVEYOR'S CERTIFICATE
I hereby certify that the boundaries of the land to be subdivided and their relationship to the adjacent lands are correct and accurately shown on this plan.

Signed: _____ Date: _____
KEITH WATSON
ONTARIO LAND SURVEYOR

WATSON
LAND SURVEYORS Ltd.
218 CHURCH STREET K8N - 3C3
BELLEVILLE, ONTARIO (613) 962 - 9521

AUGUST 29, 2022 PROJECT 11993-E-20

Subdivision Design
Ray Essiambre and Associates