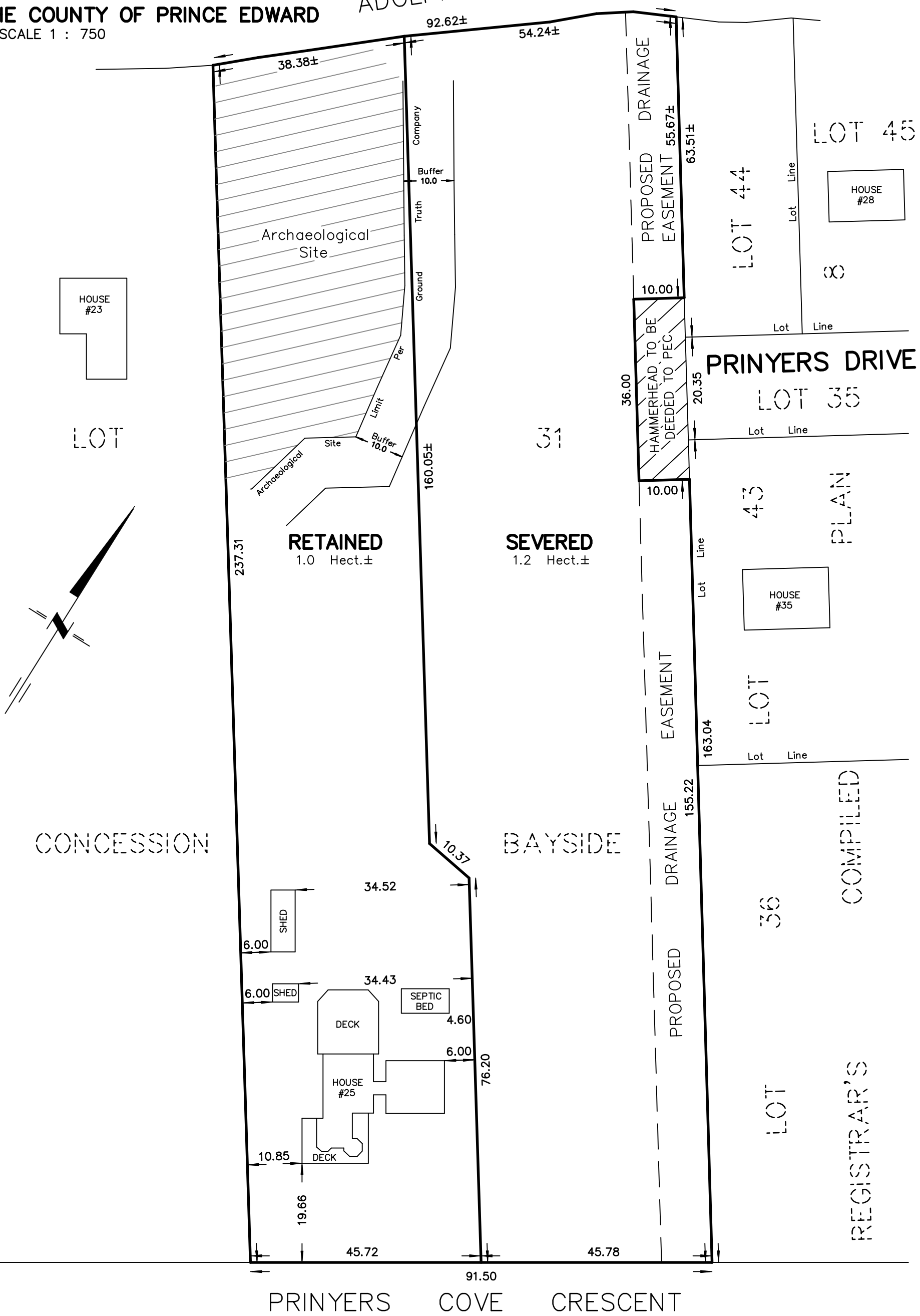


SKETCH  
 PART OF LOT 31  
 CONCESSION BAYSIDE  
 TOWNSHIP OF NORTH MARYSBURGH  
 NOW IN THE MUNICIPALITY  
 OF THE COUNTY OF PRINCE EDWARD  
 METRIC SCALE 1 : 750

ADOLPHUS REACH

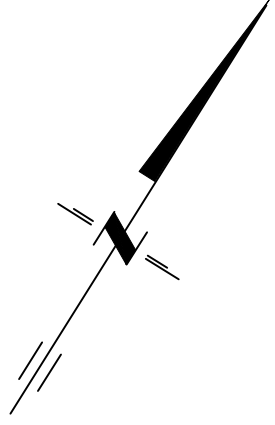


CONCESSION

BAYSIDE

PRINYERS COVE CRESCENT

PRINYERS DRIVE



METRIC :  
 DISTANCES AND COORDINATES SHOWN ON THIS PLAN ARE IN METRES AND CAN BE CONVERTED TO FEET BY DIVIDING BY 0.3048.

218 CHURCH STREET BELLEVILLE, ONTARIO	<b>WATSON</b> LAND SURVEYORS Ltd.	K8N - 3C3 (613) 962 - 9521
AUGUST 30, 2022	PROJECT N <sup>o</sup> 12850-B-21	

PLAN

COMPILED

REGISTRAR'S