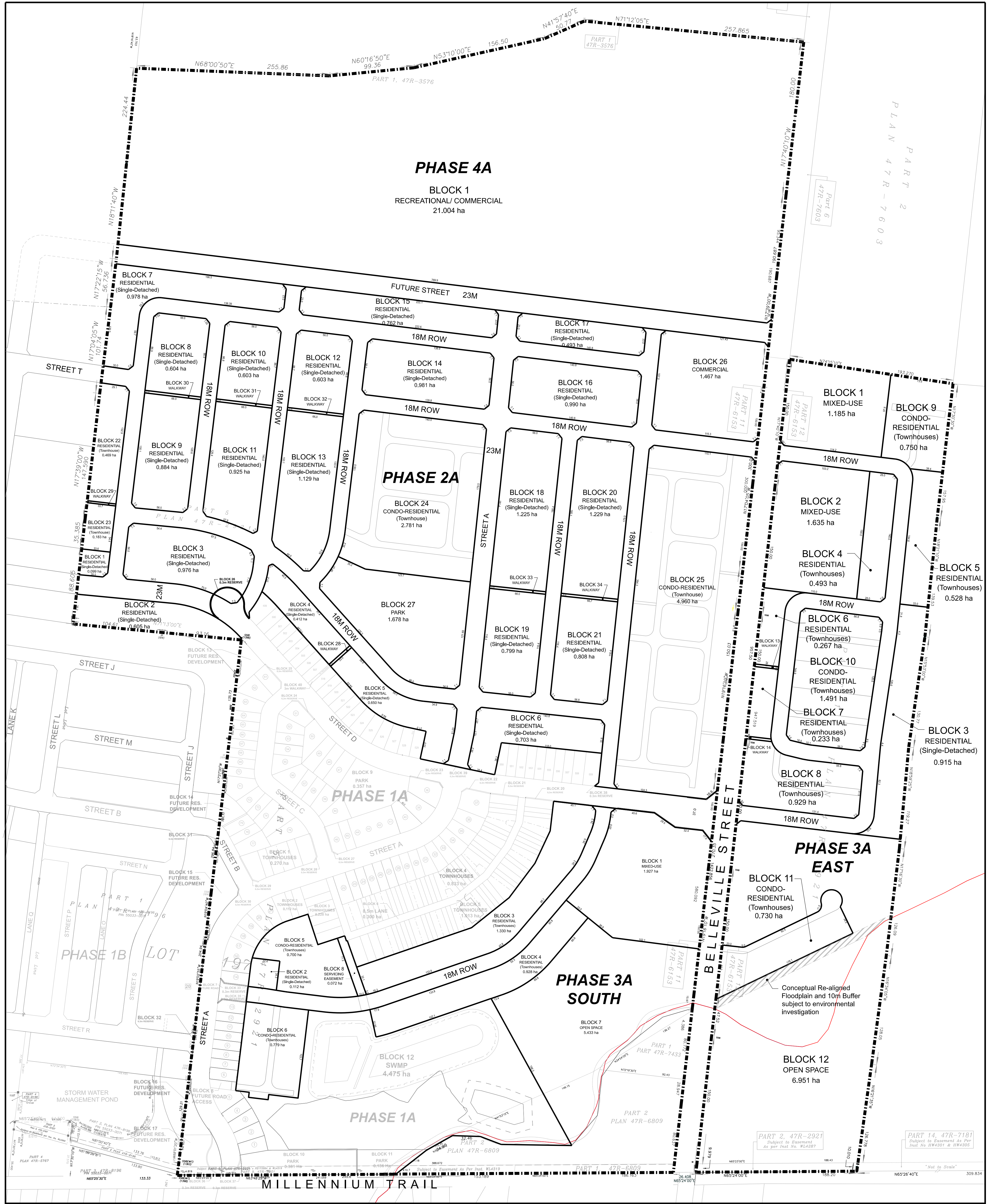


PHASE 4A

BLOCK 1
RECREATIONAL/ COMMERCIAL
21.004 ha

PART 2
PLAN 47R-7603



DEVELOPMENT STATISTICS:

Land Use	Blocks	Area	Total
Residential Single-Detached	Blocks 1-21	16.455 ha	36.378 ha
Residential Townhouses	Blocks 22-23	0.652 ha	
Residential Condo Townhouses	Blocks 24-25	7.741 ha	
Commercial	Block 26	1.467 ha	
Park	Block 27	1.678 ha	18.084 ha
Walkways	Blocks 28-34	0.117 ha	
Roads and Reserves		8.268 ha	12.228 ha
Mixed-Use	Blocks 1-2	2.820 ha	
Residential Single-Detached	Block 3	0.915 ha	18.084 ha
Residential Townhouses	Blocks 4-8	2.450 ha	
Residential Condo Townhouses	Blocks 9-11	2.972 ha	12.228 ha
Open Space	Block 12	6.951 ha	
Walkways	Blocks 13-14	0.017 ha	12.228 ha
Roads and Reserves		1.959 ha	
Mixed-Use	Block 1	1.927 ha	12.228 ha
Residential Single-Detached	Block 2	0.112 ha	
Residential Townhouses	Blocks 3-4	2.258 ha	12.228 ha
Residential Condo Townhouses	Blocks 5-6	1.479 ha	
Open Space	Block 7	5.433 ha	12.228 ha
Servicing Easement	Block 8	0.072 ha	
Roads and Reserves		0.947 ha	22.777 ha
Recreational/Commercial	Block 1	21.004 ha	
New Road and Reserves		1.773 ha	

ADDITIONAL INFORMATION:

[Section 51(17) of the Planning Act, R.S.O. 1990, c. P.13, as amended to September 28, 2022, a), b), e), f), g), & j) - on plan.

c) - on key plan
d) - see statistics
h) - piped municipal water supply
i) - sandy, clay
k) - piped communal sewage disposal
l) - easements as in instruments WL4308, WL4285, WL4319, WL4323

OWNER'S CERTIFICATE:
I authorize Weston Consulting Group Inc. to prepare and submit this plan for draft approval.

Date: _____

SURVEYOR'S CERTIFICATE:
I hereby certify that the boundaries of the lands being subdivided and their correct relationship to the adjacent lands are accurately and correctly shown on this plan.

Date: _____

DRAFT PLAN OF SUBDIVISION
CORK AND VINE
Phase 2A, 3A East, 3A South and 4A

LOT 191 AND PARTS OF LOTS 10, 195, 196, 196B, 188, 197
REGISTERED PLAN NO. 8
(VILLAGE OF WELLINGTON)
MUNICIPALITY OF THE COUNTY OF PRINCE EDWARD

WESTON CONSULTING

Vaughan: 201 Millway Ave, Suite 19
Vaughan, Ontario L4K 5K5
T: 905.738.8990 F: 905.738.6637

Toronto: 268 Berkeley St.
Toronto, Ontario M5A 2X5
T: 416.640.9917 F: 905.738.6637

REVISIONS LIST

Oct 03 2022	Design adjustments based on revised design of Phase 1A.
Sep 21 2022	Revised design of Phases 2A, 3A East, 3A South and 4A
Jun 22 2020	Approved Draft Plan

File Number: 10793
Drawn By: MH/CB
Planner: RG
Scale: see scale bar
CAD: 10793/draft plans/Ph 2A 3A and 4/DP-02_2022-10-03.dgn

Drawing Number: **DP-02**

