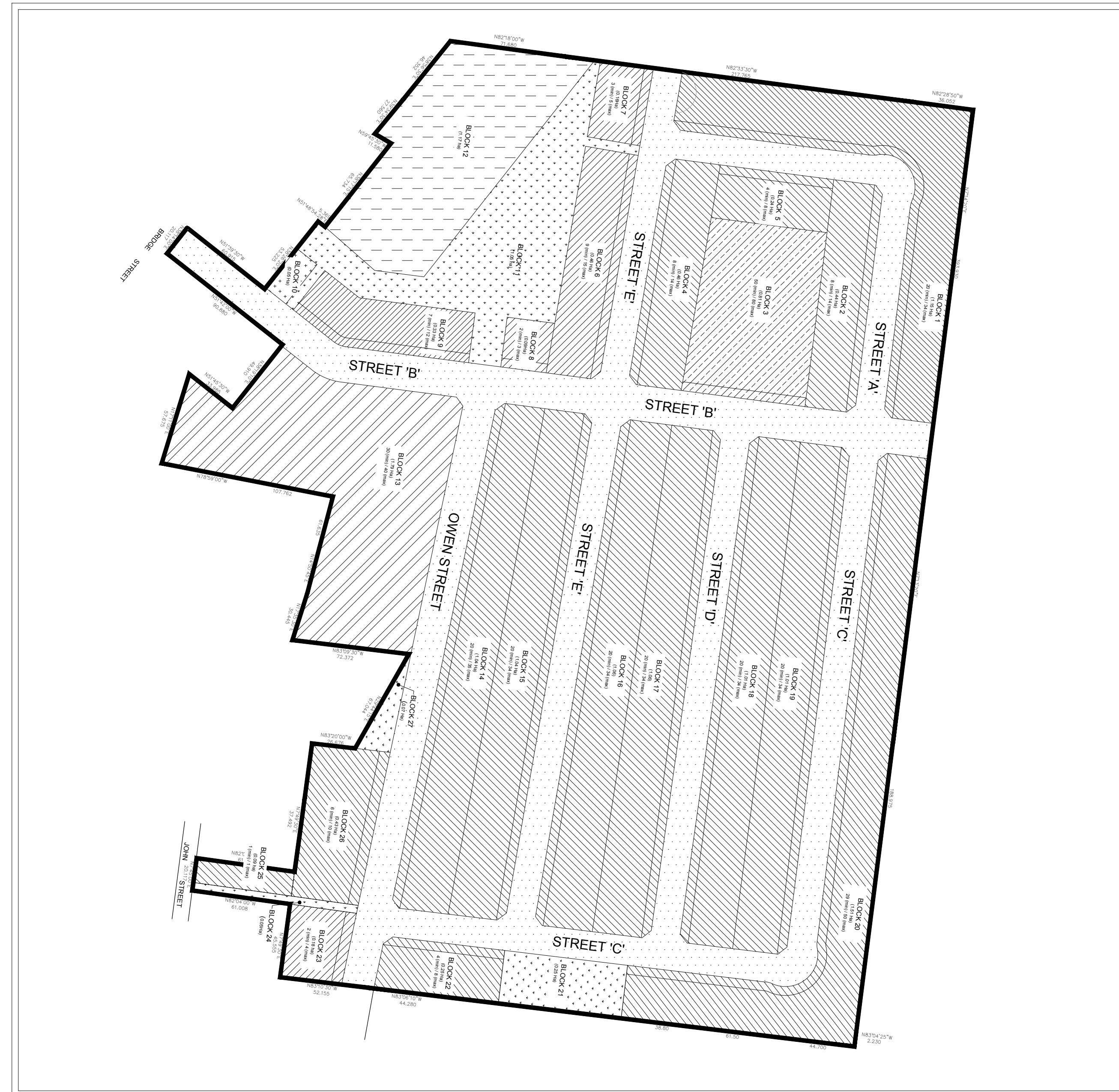
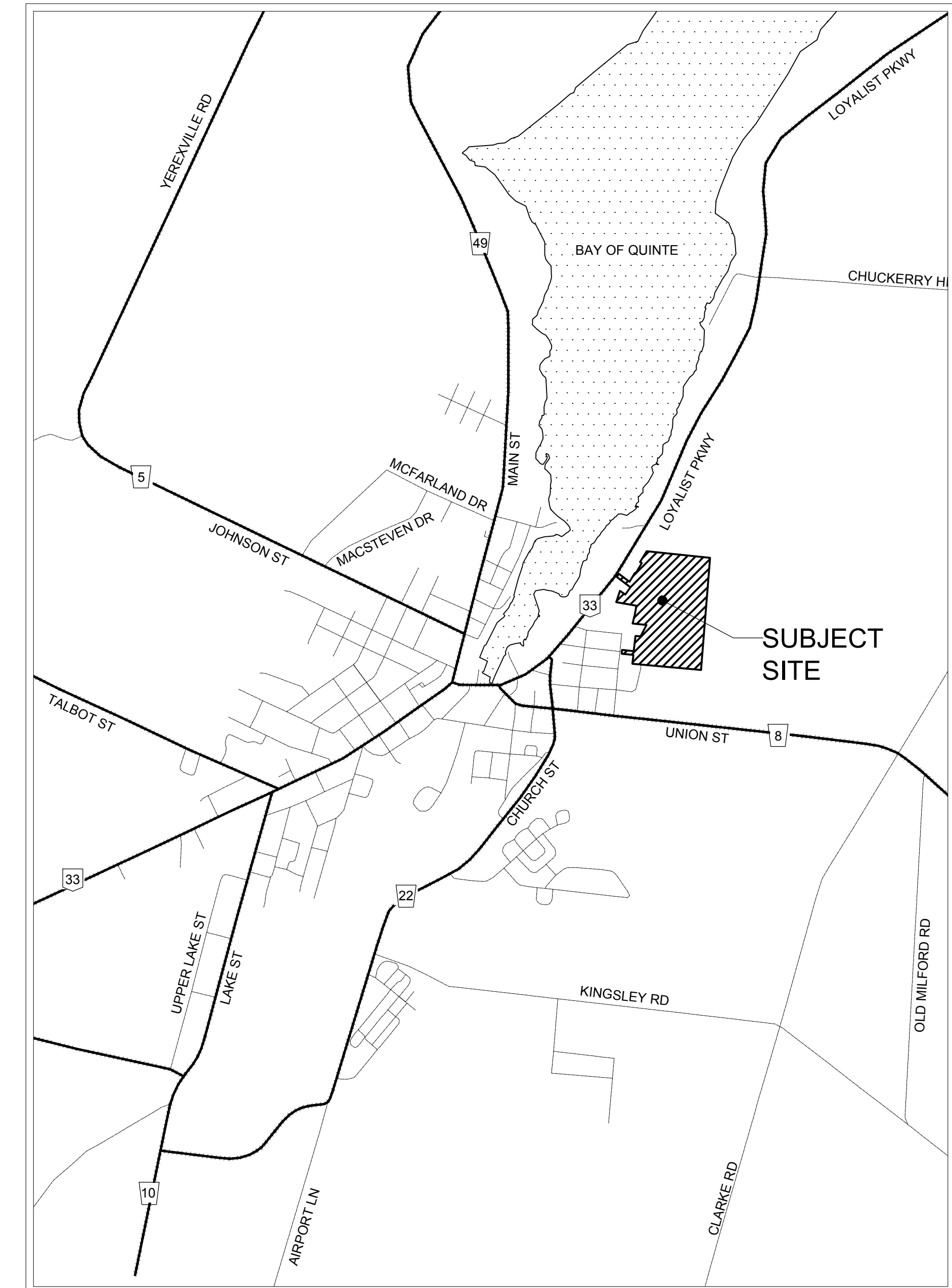


HILDEN HOMES TULIP ESTATES SUBDIVISION PRINCE EDWARD COUNTY



DRAWING INDEX PLAN
N.T.S.

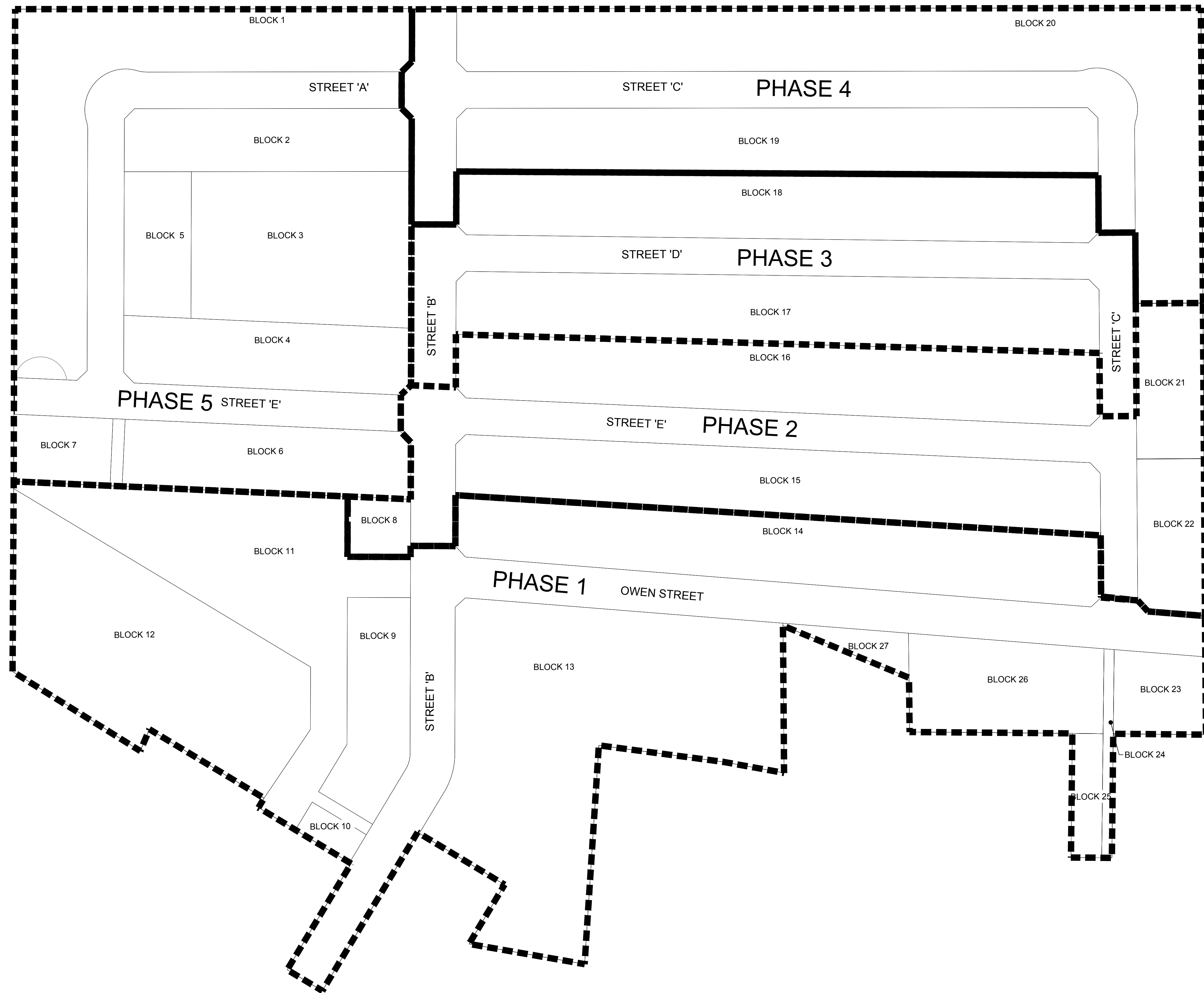


KEY PLAN
N.T.S.

LIST OF CIVIL DRAWINGS

- C100 PHASING PLAN
- C101 ACTIVE TRANSPORTATION PLAN
- C200 GRADING PLAN
- C201 SWM POND DETAIL
- C202 SWM OUTLET DETAIL

- C300 WET UTILITIES PLAN
- C301 WATER SERVICING PLAN
- C302 SANITARY SERVICING PLAN
- C303 MINOR STORM SERVICING PLAN
- C400 PARK COVERAGE



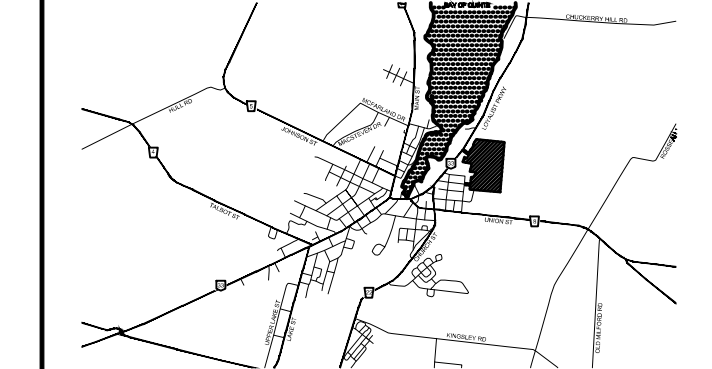
CLIENT
HILDEN HOMES
 393 SIDNEY STREET
 BELLEVILLE, ON K8P 3Z9

COPYRIGHT
 This drawing has been prepared solely for the intended use, thus any reproduction or distribution for any purpose other than authorized by IBI Group is forbidden. Written dimensions shall have precedence over scaled dimensions. Contractors shall verify and be responsible for all dimensions and conditions on the job, and IBI Group shall be informed of any variations from the dimensions and conditions shown on the drawing. Shop drawings shall be submitted to IBI Group for general concurrence before proceeding with fabrication.
 IBI Group Professional Services (Canada) Inc.
 is a member of the IBI Group of companies.

ISSUES

No.	DESCRIPTION	DATE
1	ISSUED FOR SUBMISSION	2020-12-03

NOT FOR CONSTRUCTION



LEGEND

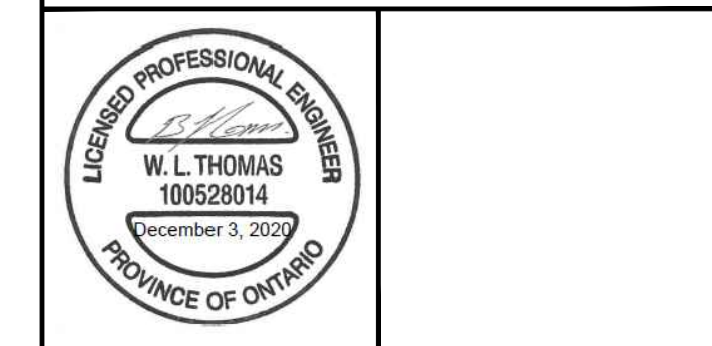
PHASE 1 OWEN STREET

PHASE 2 STREET 'E'

PHASE 3 STREET 'D'

PHASE 4 STREET 'C'

PHASE 5 STREET 'A'



IBI GROUP
 Unit 110 - 650 Dalton Avenue
 Kingston ON K7M 8N7 Canada
 tel 613 531 4440 fax 613 531 7789
 ibigroup.com

PROJECT
 TULIP ESTATES SUBDIVISION
 PICTON, ON

PROJECT No. 115791	####
DRAWN BY: TJD	CHECKED BY: BT
PROJECT MGR: DS	APPROVED BY: BT

SHEET TITLE
 PHASING PLAN

SHEET NUMBER C-100	ISSUE 1
------------------------------	-------------------



CLIENT
HILDEN HOMES
 393 SIDNEY STREET
 BELLEVILLE, ON K8P 3Z9

COPYRIGHT
 This drawing has been prepared solely for the intended use, thus any reproduction or distribution for any purpose other than authorized by IBI Group is forbidden. Written dimensions shall have precedence over scaled dimensions. Contractors shall verify and be responsible for all dimensions and conditions on the job, and IBI Group shall be informed of any variations from the dimensions and conditions shown on the drawing. Shop drawings shall be submitted to IBI Group for general confirmation before proceeding with fabrication.

IBI Group Professional Services (Canada) Inc.
 is a member of the IBI Group of companies

ISSUES		
No.	DESCRIPTION	DATE
1	ISSUED FOR SUBMISSION	2020-12-03

NOT FOR CONSTRUCTION



LEGEND

	3 m ASPHALT WALKWAY
	1.5 m CONCRETE MONOLITHIC SIDEWALK



IBI GROUP
 Unit 110 - 650 Dalton Avenue
 Kingston ON K7M 8N7 Canada
 tel 613 531 4440 fax 613 531 7789
 ibigroup.com

PROJECT
TULIP ESTATES SUBDIVISION
 PICTON, ON

PROJECT No. 115791	####
DRAWN BY: TJD	CHECKED BY: BT
PROJECT MGR: DS	APPROVED BY: BT

SHEET TITLE
ACTIVE TRANSPORTATION PLAN

SHEET NUMBER C-101	ISSUE 1
------------------------------	-------------------

File Location: E:\115791_Hilden\Picton\9 Drawings\Subdivisions\115791_LC101_Subdivision Road Plan.dwg Last Saved: December 3, 2020, by Corey Alderman Plotted: Thursday, December 3, 2020 12:08:47 PM by Corey Alderman



CLIENT
HILDEN HOMES

393 SIDNEY STREET
BELLEVILLE, ON K8P 3Z9

COPYRIGHT
This drawing has been prepared solely for the intended use, and any reproduction or distribution for any purpose other than authorized by IBI Group is forbidden. Written dimensions shall have precedence over scaled dimensions. Contractors shall verify and be responsible for all dimensions and conditions on the job, and IBI Group shall be relieved of any liability from the dimensions and conditions shown on the drawing. Shop drawings shall be submitted to IBI Group for general conference before proceeding with fabrication.

IBI Group Professional Services (Canada) Inc.
is a member of the IBI Group of companies.

ISSUES		
No.	DESCRIPTION	DATE
1	ISSUED FOR SUBMISSION	2020-12-03

NOT FOR CONSTRUCTION



LEGEND
 ⚡ EL: 80.23 EXISTING ELEVATION
 ⬠ EL: 80.23 PROPOSED ELEVATION



IBI GROUP
 Unit 110 - 650 Dalton Avenue
 Kingston ON K7M 8N7 Canada
 tel 613 531 4440 fax 613 531 7759
 ibigroup.com

PROJECT
TULIP ESTATES SUBDIVISION

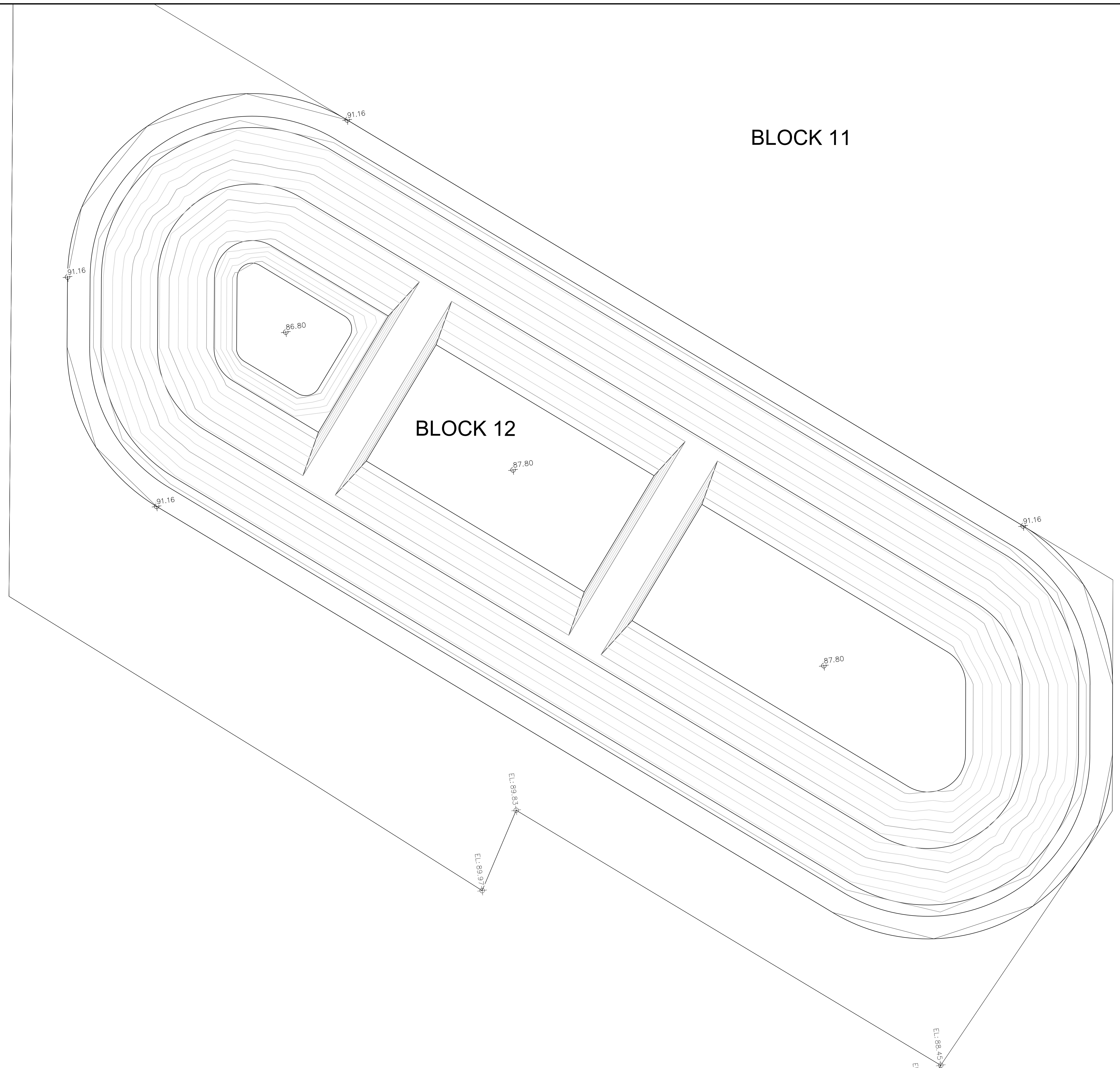
PICTON, ON

PROJECT No. 115791	####
DRAWN BY: TJD	CHECKED BY: BT
PROJECT MGR: DS	APPROVED BY: BT

SHEET TITLE
GRADING PLAN

SHEET NUMBER C-200	ISSUE 1
------------------------------	-------------------

File Location: E:\115791_Hilden\Drawings\Subdivision\Layout\115791_C200_Subdivision Grading Plan.dwg Last Saved: November 25, 2020, by Corey Alderman Plotted: Thursday, December 3, 2020 11:46:13 AM by Corey Alderman



BLOCK 11

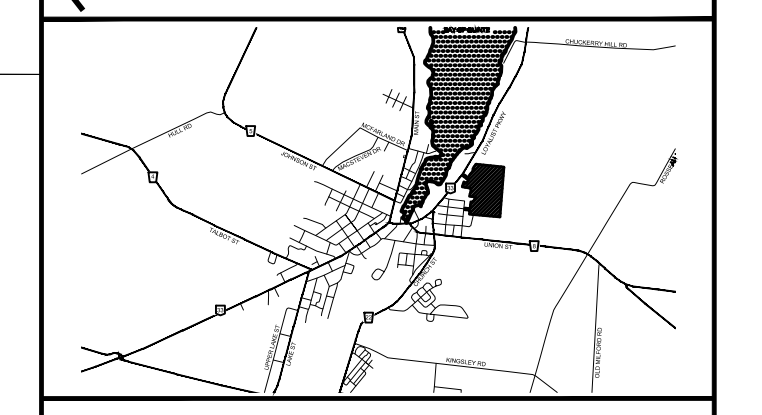
BLOCK 12

CLIENT
HILDEN HOMES
 393 SIDNEY STREET
 BELLEVILLE, ON K8P 3Z9

COPYRIGHT
 This drawing has been prepared solely for the intended use. This any reproduction or distribution for any purpose other than authorized by IBI Group is forbidden. Written dimensions shall have precedence over scaled dimensions. Contractors shall verify and be responsible for all dimensions and conditions on the job, and IBI Group shall be relieved of any liabilities from the dimensions and conditions shown on the drawing. Shop drawings shall be submitted to IBI Group for general conference before proceeding with fabrication.
 IBI Group Professional Services (Canada) Inc.
 is a member of the IBI Group of companies.

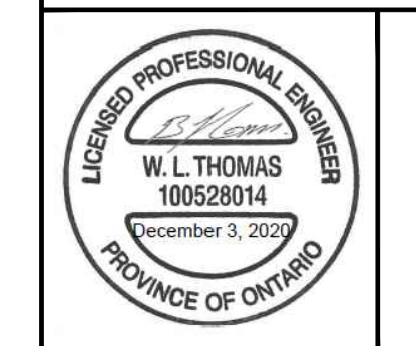
ISSUES		
No.	DESCRIPTION	DATE
1	ISSUED FOR SUBMISSION	2020-12-03

NOT FOR CONSTRUCTION



LEGEND

⊕ EL: 80.23	EXISTING ELEVATION
⊕ 80.23	PROPOSED ELEVATION



IBI GROUP
 Unit 110 - 650 Dalton Avenue
 Kingston ON K7M 8N7 Canada
 tel 613 531 4440 fax 613 531 7789
 ibigroup.com

PROJECT
TULIP ESTATES SUBDIVISION
 PICTON, ON

PROJECT No. 115791	####
DRAWN BY: TJD	CHECKED BY: BT
PROJECT MGR: DS	APPROVED BY: BT

SHEET TITLE
SWM POND DETIAL

SHEET NUMBER C-201	ISSUE 1
------------------------------	-------------------

CLIENT
HILDEN HOMES
 393 SIDNEY STREET
 BELLEVILLE, ON K8P 3Z9

COPYRIGHT
 This drawing has been prepared solely for the intended use. This any reproduction or distribution for any purpose other than authorized by IBI Group is forbidden. Written dimensions shall have precedence over scaled dimensions. Contractors shall verify and be responsible for all dimensions and conditions on the job, and IBI Group shall be informed of any variations from the dimensions and conditions shown on the drawing. Shop drawings shall be submitted to IBI Group for general confirmation before proceeding with fabrication.
 IBI Group Professional Services (Canada) Inc.
 is a member of the IBI Group of companies.

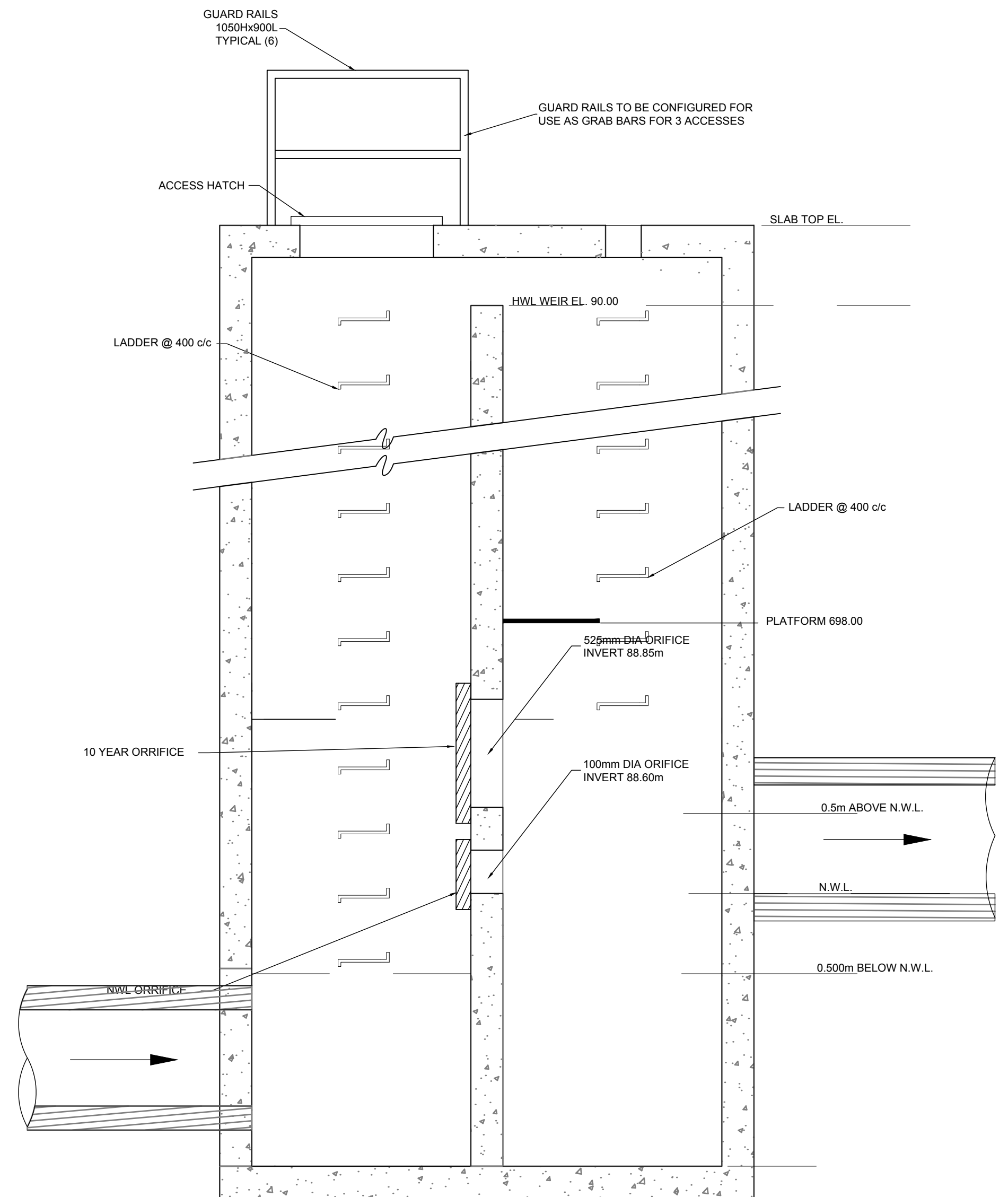
ISSUES		
No.	DESCRIPTION	DATE
1	ISSUED FOR SUBMISSION	2020-12-03

NOT FOR CONSTRUCTION

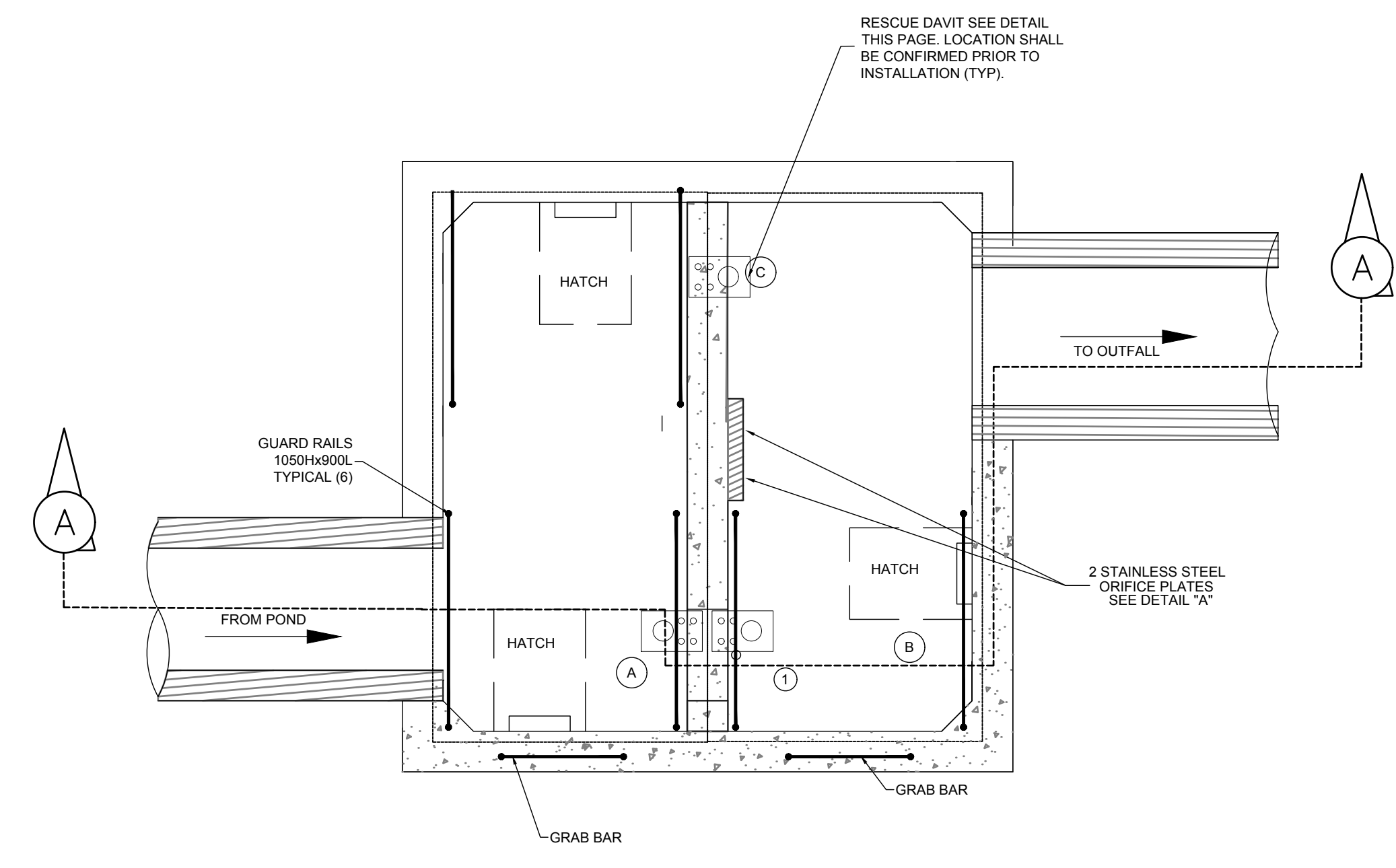


LEGEND

⊕ EL: 80.23	EXISTING ELEVATION
⊕ 80.23	PROPOSED ELEVATION



SECTION
SCALENTS



PLAN VIEW



IBI GROUP
 Unit 110 - 650 Dalton Avenue
 Kingston ON K7M 8N7 Canada
 tel 613 531 4440 fax 613 531 7789
 ibigroup.com

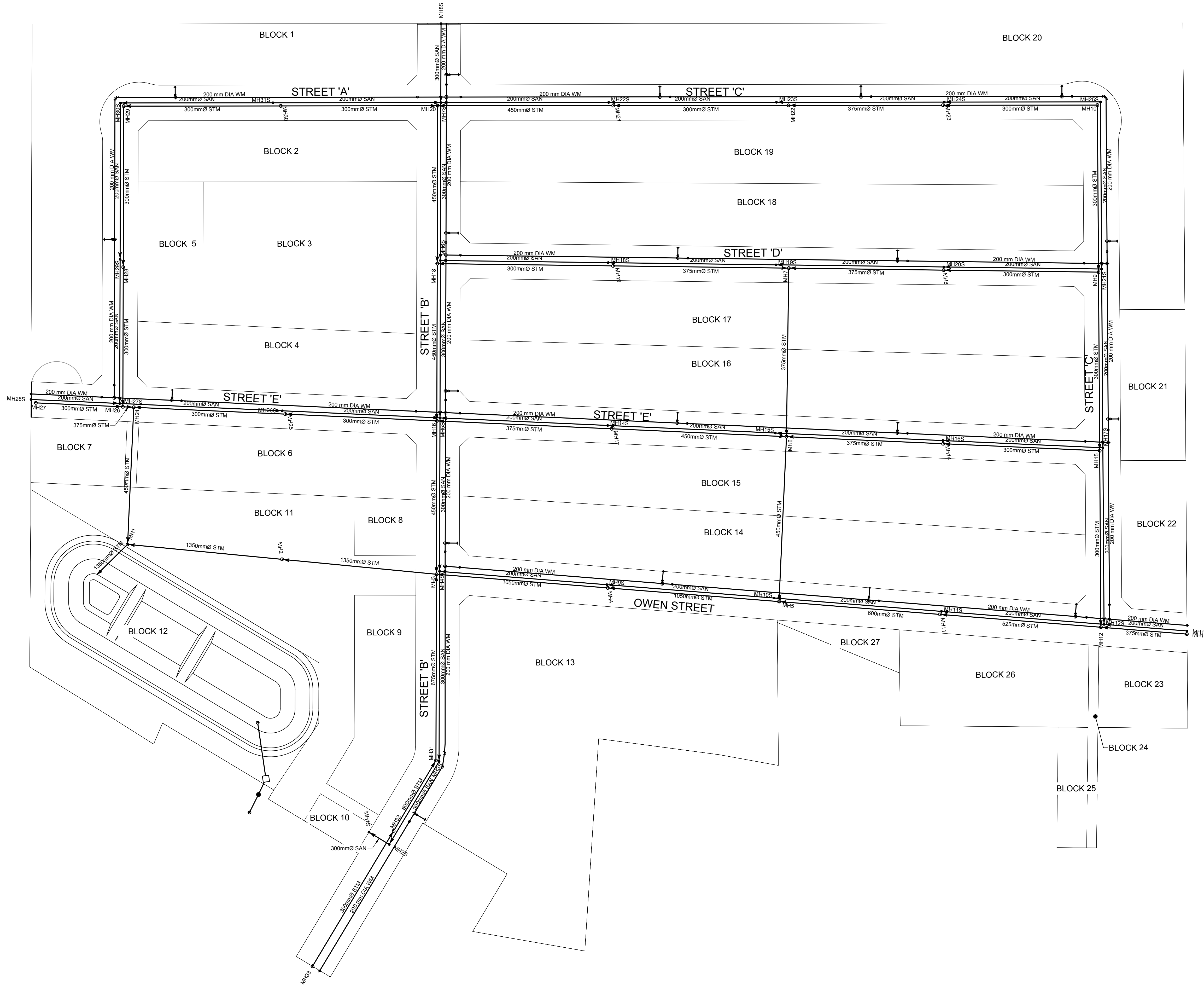
PROJECT
TULIP ESTATES SUBDIVISION
 PICTON, ON

PROJECT No. 115791	####
DRAWN BY: TJD	CHECKED BY: BT
PROJECT MGR: DS	APPROVED BY: BT

SHEET TITLE
SWM OUTLET DETAIL

SHEET NUMBER C-202	ISSUE 1
------------------------------	-------------------

File Location: E:\115791_Hilden\Picton\9 Drawings\Drawings\Layouts\115791_C202_SWM_Outlet_Detail.dwg Last Saved: September 3, 2020, by Tyler Doucet Picton: Thursday, December 3, 2020 11:36:48 AM by Corey Alderman



CLIENT
HILDEN HOMES
 393 SIDNEY STREET
 BELLEVILLE, ON K8P 3Z9

COPYRIGHT
 This drawing has been prepared solely for the intended use, and any reproduction or distribution for any purpose other than authorized by IBI Group is forbidden. Written dimensions shall have precedence over scaled dimensions. Contractors shall verify and be responsible for all dimensions and conditions on the job, and IBI Group shall be relieved of any liability from the dimensions and conditions shown on this drawing. Shop drawings shall be submitted to IBI Group for general performance before proceeding with fabrication.
 IBI Group Professional Services (Canada) Inc.
 is a member of the IBI Group of companies.

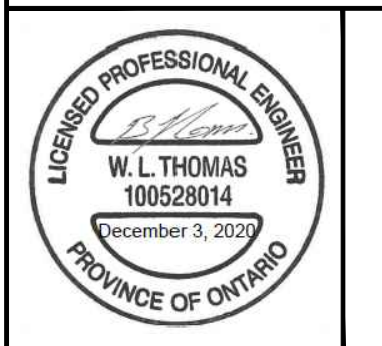
ISSUES

No.	DESCRIPTION	DATE
1	ISSUED FOR SUBMISSION	2020-12-03

NOT FOR CONSTRUCTION



- LEGEND
- PROPOSED SANITARY SEWER
 - PROPOSED SANITARY FORCEMAIN
 - PROPOSED SANITARY MANHOLE (<600 mm)
 - PROPOSED STORM SEWER (<600 mm)
 - PROPOSED STORM SEWER (≥600 mm)
 - PROPOSED STORM MANHOLE
 - PROPOSED STORM CATCHBASIN
 - PROPOSED WATER MAIN
 - PROPOSED GATE VALVE
 - PROPOSED FIRE HYDRANT
 - ⊚ PROPOSED BEND
 - ⊙ PROPOSED TEE
 - ⊕ PROPOSED CROSS



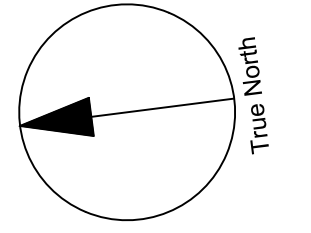
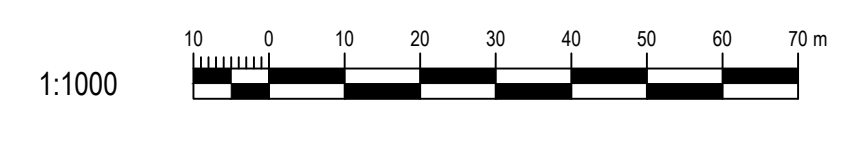
IBI GROUP
 Unit 110 - 650 Dalton Avenue
 Kingston ON K7M 8N7, Canada
 tel 613 531 4440 fax 613 531 7789
 ibigroup.com

PROJECT
TULIP ESTATES SUBDIVISION
 PICTON, ON

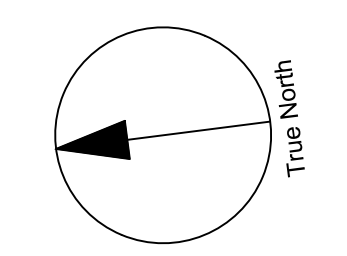
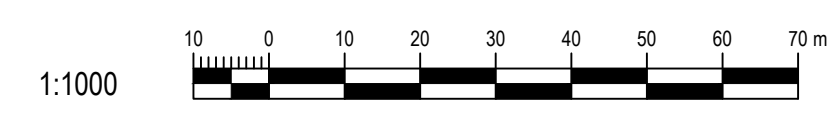
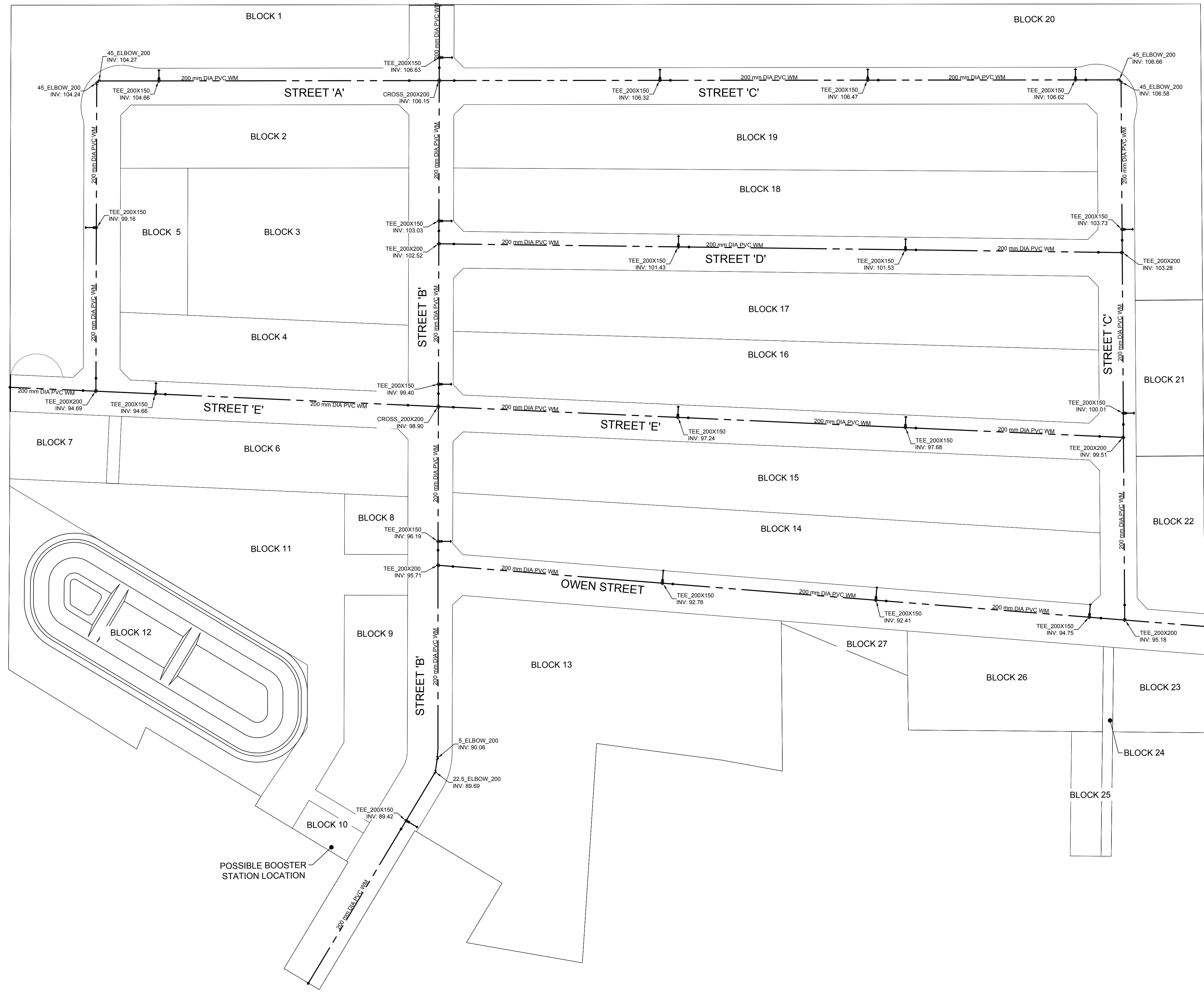
PROJECT No. 115791	####
DRAWN BY: TJD	CHECKED BY: BT
PROJECT MGR: DS	APPROVED BY: BT

SHEET TITLE
WET UTILITIES PLAN

SHEET NUMBER C-300	ISSUE 1
------------------------------	-------------------



File Location: E:\115791_Tulip Estates\Drawings\DWG\Utilities\115791_C300_Wet Utilities Plan.dwg Last Saved: September 3, 2020, by Iyer doucet Printed: Thursday, December 3, 2020 11:17:59 AM by Corey Alderman



CLIENT
HILDEN HOMES

393 SIDNEY STREET
BELLEVILLE, ON K8P 3Z9

COPYRIGHT
This drawing has been prepared solely for the intended use, and any reproduction or distribution for any purpose other than authorized by IBI Group is prohibited. Written dimensions shall have precedence over scaled dimensions. Contractors shall verify and be responsible for all dimensions and conditions on the site, and IBI Group shall be relieved of any liability from the dimensions and conditions shown on this drawing. Shop drawings shall be submitted to IBI Group for general performance before proceeding with fabrication.

IBI Group Professional Services (Canada) Inc.
is a member of the IBI Group of companies.

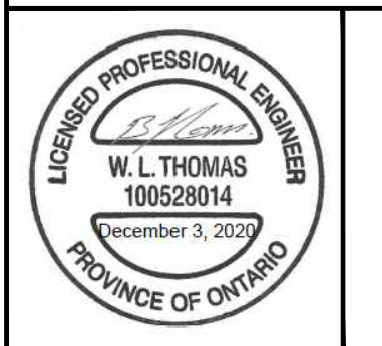
ISSUES

No.	DESCRIPTION	DATE
1	ISSUED FOR SUBMISSION	2020-12-03

NOT FOR CONSTRUCTION



- LEGEND**
- PROPOSED WATER MAIN
 - PROPOSED GATE VALVE
 - PROPOSED FIRE HYDRANT
 - ⊚ PROPOSED BEND
 - PROPOSED TEE
 - ⊕ PROPOSED CROSS



IBI GROUP
Unit 110 - 650 Dalton Avenue
Kingston ON K7M 8N7, Canada
tel 613 531 4440 fax 613 531 7789
ibigroup.com

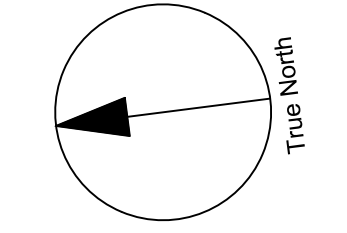
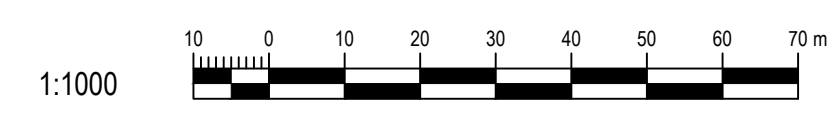
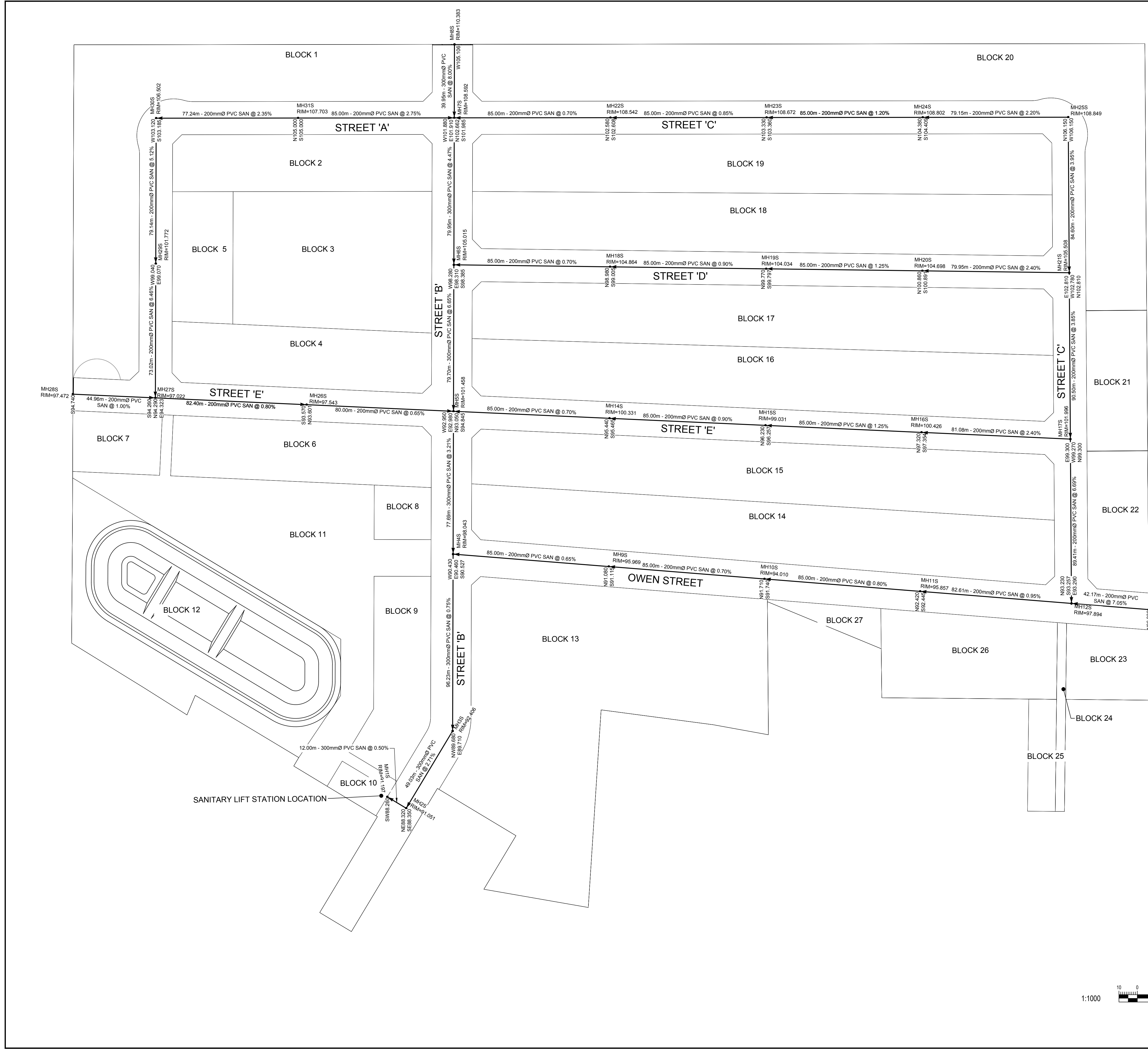
PROJECT
TULIP ESTATES SUBDIVISION

PICTON, ON

PROJECT No. 115791	####
DRAWN BY: TJD	CHECKED BY: BT
PROJECT MGR: DS	APPROVED BY: BT

SHEET TITLE
WATER SERVICING PLAN

SHEET NUMBER C-301	ISSUE 1
------------------------------	-------------------



CLIENT
HILDEN HOMES

393 SIDNEY STREET
BELLEVILLE, ON K8P 3Z9

COPYRIGHT
This drawing has been prepared solely for the intended use, and any reproduction or distribution for any purpose other than authorized by IBI Group is prohibited. Written dimensions shall have precedence over scaled dimensions. Contractors shall verify and be responsible for all dimensions and conditions on the job, and IBI Group shall be relieved of any liability from the dimensions and conditions shown on the drawing. Shop drawings shall be submitted to IBI Group for general performance before proceeding with fabrication.

IBI Group Professional Services (Canada) Inc.
is a member of the IBI Group of companies.

ISSUES

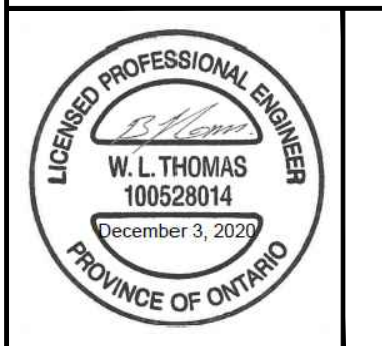
No.	DESCRIPTION	DATE
1	ISSUED FOR SUBMISSION	2020-12-03

NOT FOR CONSTRUCTION



LEGEND

- PROPOSED SANITARY SEWER
- PROPOSED SANITARY FORCEMAIN
- PROPOSED SANITARY MANHOLE



IBI GROUP
Unit 110 - 650 Dalton Avenue
Kingston ON K7M 8N7, Canada
tel 613 531 4440 fax 613 531 7789
ibigroup.com

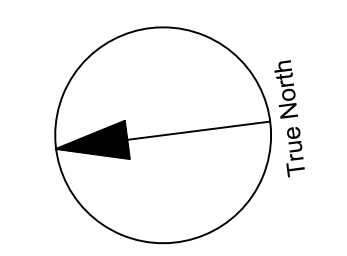
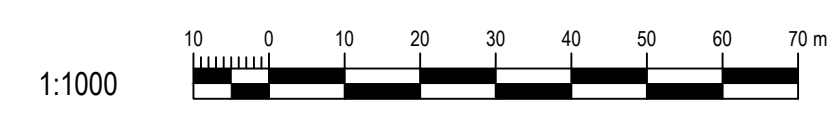
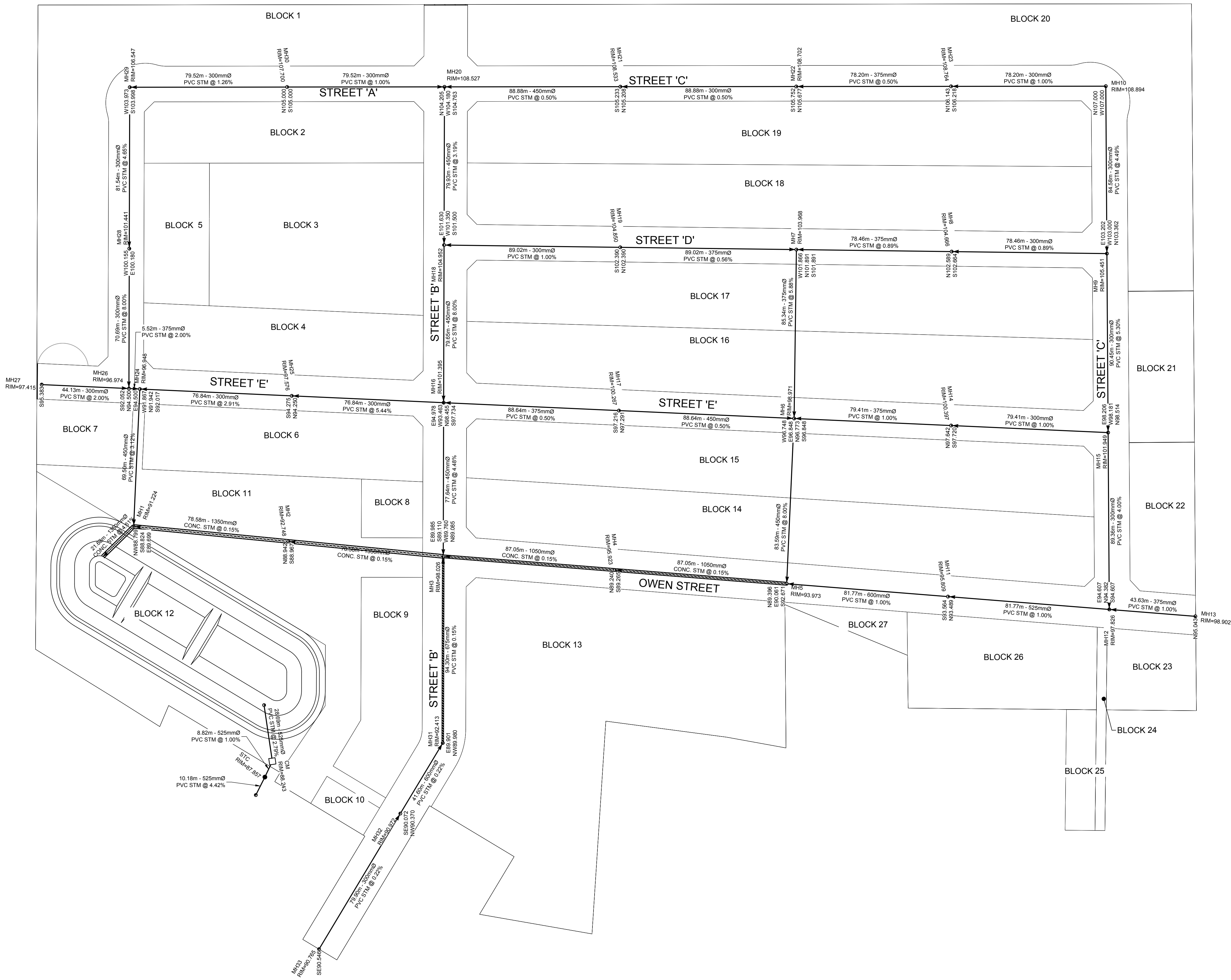
PROJECT
TULIP ESTATES SUBDIVISION

PICTON, ON

PROJECT No. 115791	####
DRAWN BY: TJD	CHECKED BY: BT
PROJECT MGR: DS	APPROVED BY: BT

SHEET TITLE
SANITARY SERVICING PLAN

SHEET NUMBER C-302	ISSUE 1
------------------------------	-------------------



CLIENT
HILDEN HOMES

393 SIDNEY STREET
BELLEVILLE, ON K8P 3Z9

COPYRIGHT
This drawing has been prepared solely for the intended use, and any reproduction or distribution for any purpose other than that authorized by IBI Group is prohibited. Written dimensions shall have precedence over scaled dimensions. Contractors shall verify and be responsible for all dimensions and conditions on the job, and IBI Group shall be relieved of any liability from the dimensions and conditions shown on this drawing. Shop drawings shall be submitted to IBI Group for general performance before proceeding with fabrication.

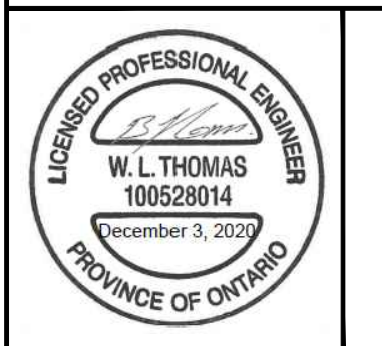
IBI Group Professional Services (Canada) Inc.
is a member of the IBI Group of companies.

ISSUES		
No.	DESCRIPTION	DATE
1	ISSUED FOR SUBMISSION	2020-12-03

NOT FOR CONSTRUCTION



- LEGEND**
- PROPOSED STORM SEWER (<600 mm)
 - PROPOSED STORM SEWER (≥600 mm)
 - PROPOSED STORM MANHOLE
 - PROPOSED STORM CATCHBASIN



IBI GROUP
Unit 110 - 650 Dalton Avenue
Kingston ON K7M 8N7 Canada
tel 613 531 4440 fax 613 531 7789
ibigroup.com

PROJECT
TULIP ESTATES SUBDIVISION

PICTON, ON

PROJECT No. 115791	####
DRAWN BY: TJD	CHECKED BY: BT
PROJECT MGR: DS	APPROVED BY: BT

SHEET TITLE
MINOR STORM SERVICING PLAN

SHEET NUMBER
C-303

ISSUE
1



CLIENT
HILDEN HOMES

393 SIDNEY STREET
BELLEVILLE, ON K8P 3Z9

COPYRIGHT
This drawing has been prepared solely for the intended use. This any reproduction or distribution for any purpose other than authorized by IBI Group is forbidden. Written dimensions shall have precedence over scaled dimensions. Contractors shall verify and be responsible for all dimensions and conditions on the job, and IBI Group shall be released of any variations from the dimensions and conditions shown on the drawing. Shop drawings shall be submitted to IBI Group for general conference before proceeding with fabrication.

IBI Group Professional Services (Canada) Inc.
is a member of the IBI Group of companies.

ISSUES

No.	DESCRIPTION	DATE
1	ISSUED FOR SUBMISSION	2020-12-03

NOT FOR CONSTRUCTION

LEGEND

200m PARK COVERAGE LIMIT

LICENSED PROFESSIONAL ENGINEER
W. L. THOMAS
100528014
December 3, 2020
PROVINCE OF ONTARIO

IBI GROUP
Unit 110 - 650 Dalton Avenue
Kingston ON K7M 8N7 Canada
tel: 613 531 4440 fax: 613 531 7789
ibigroup.com

PROJECT
TULIP ESTATES SUBDIVISION
PICTON, ON

PROJECT No. 115791	####
DRAWN BY: TJD	CHECKED BY: BT
PROJECT MGR: DS	APPROVED BY: BT

SHEET TITLE
PARK COVERAGE

SHEET NUMBER C-400	ISSUE 1
------------------------------	-------------------

File Location: E:\115791_Tulip Estates\Drawings\Site\115791_L_C400_Park_Coverage.dwg Last Saved: December 3, 2020, by Corey Alderman Plotted: Thursday, December 3, 2020 10:47:59 AM by Corey Alderman