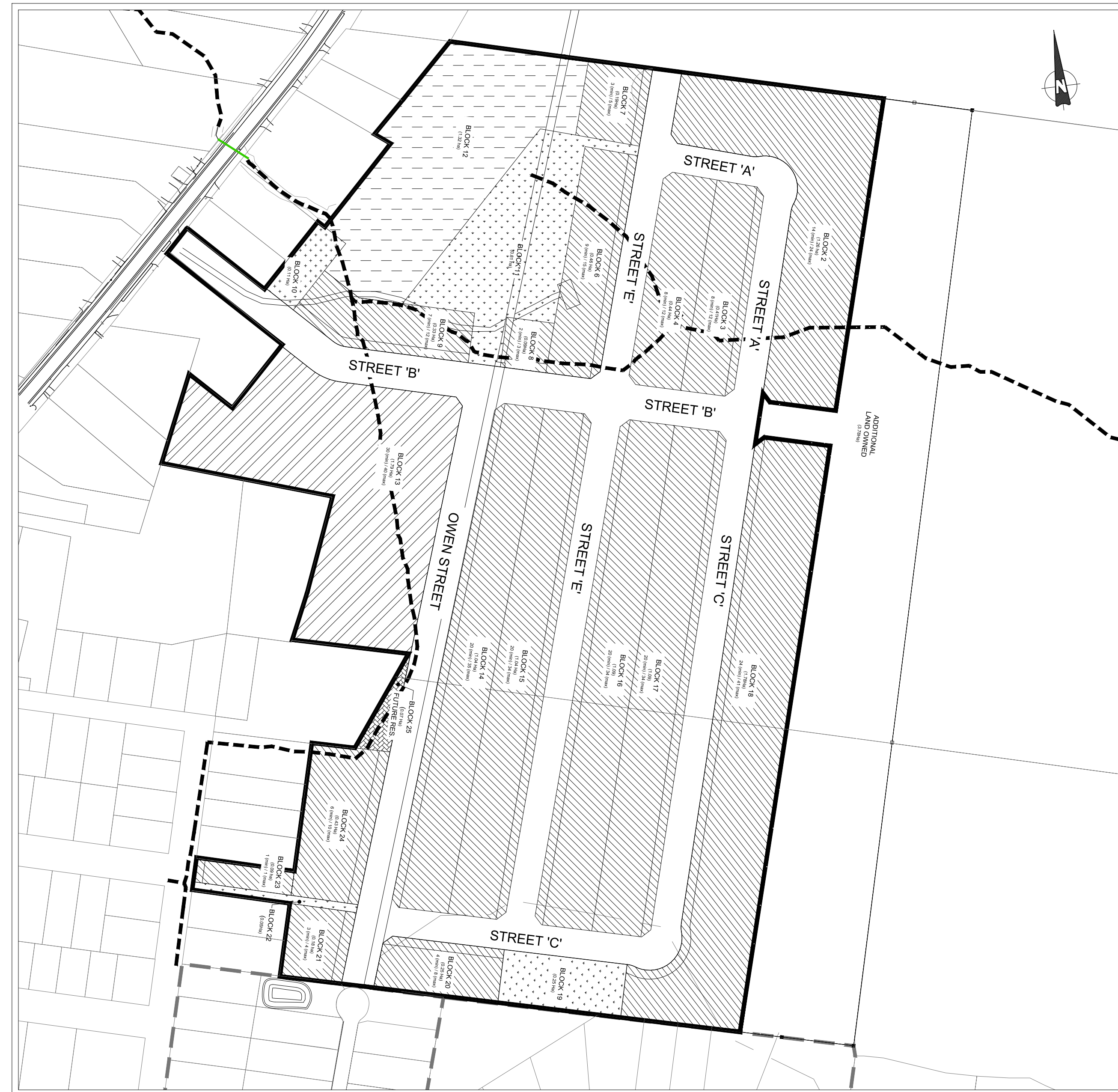


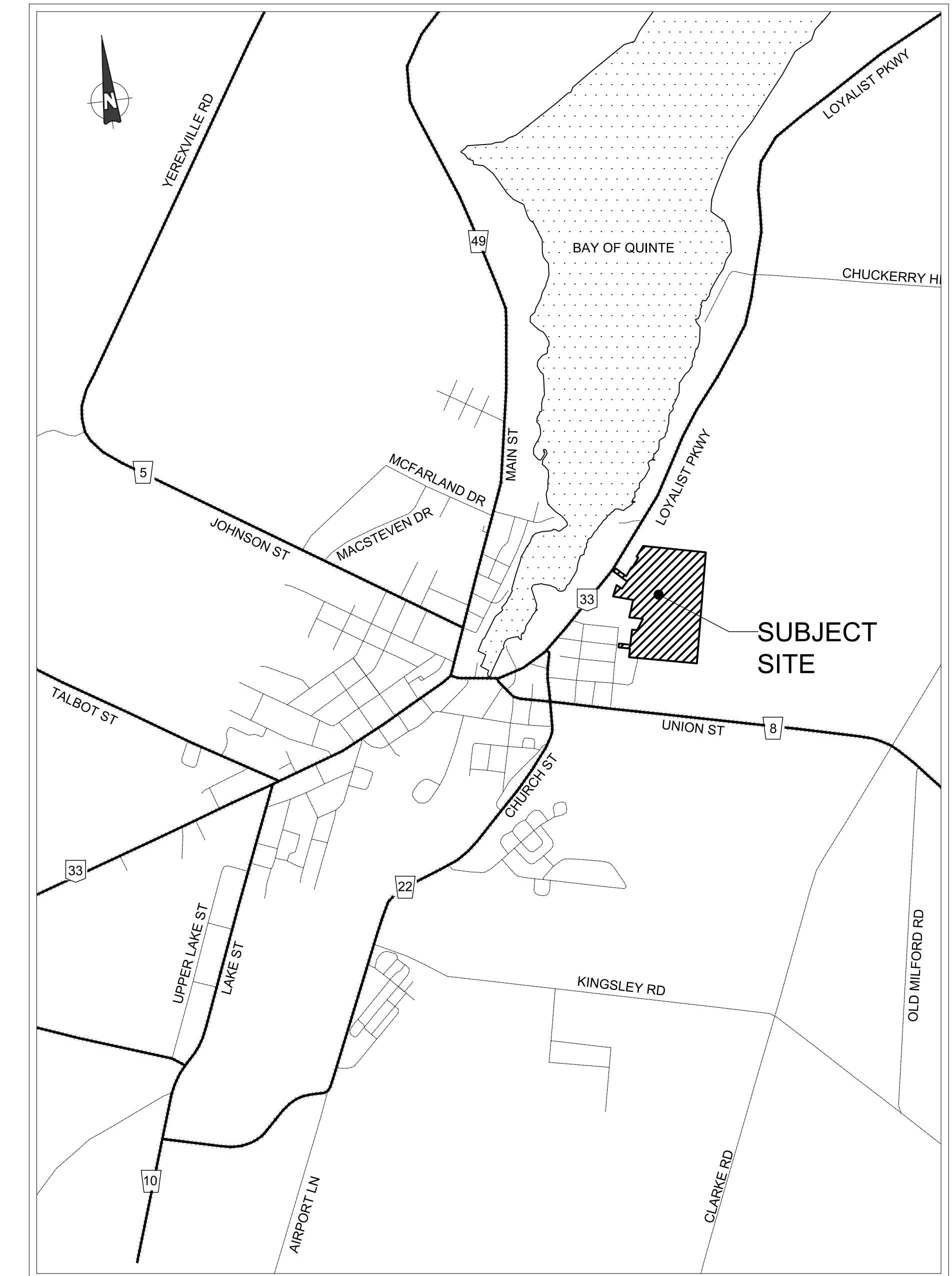
HILDEN HOMES TULIP ESTATES SUBDIVISION

PRINCE EDWARD COUNTY



DRAWING INDEX PLAN

N.T.S.

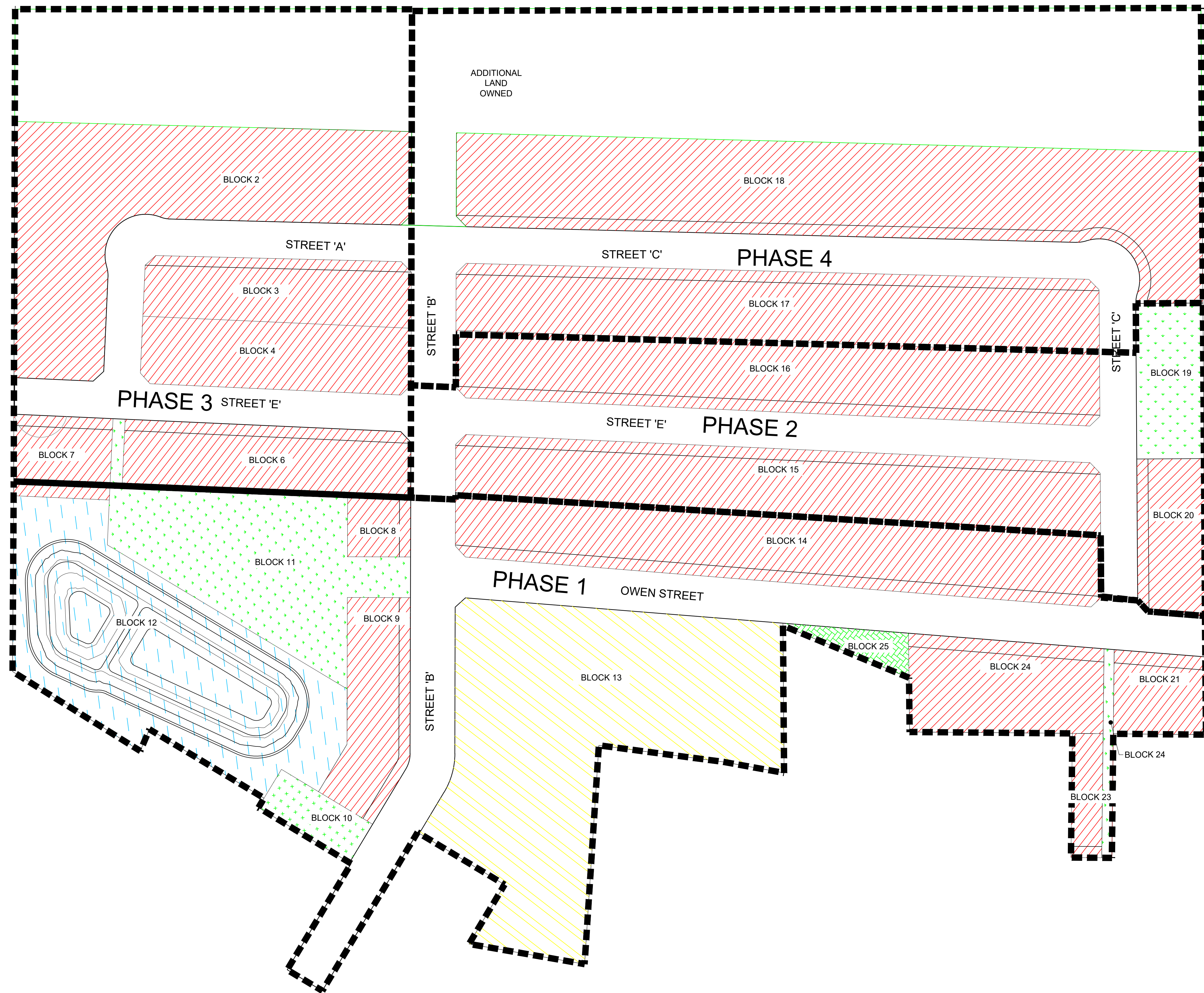


KEY PLAN

N.T.S.

LIST OF CIVIL DRAWINGS

C100	PHASING PLAN
C200	SUBDIVISION GRADING PLAN
C300	GENERAL SERVICING PLAN
C301	WATER SERVICING PLAN
C302	SANITARY SERVICING PLAN
C303	STORM SEWER SERVICING PLAN
C400	PRE-DEVELOPMENT STORM CATCHMENT PLAN
C401	POST-DEVELOPMENT STORM CATCHMENT PLAN
SWM FIGURE #01	EXISTING STORM WATER CATCHMENT AREAS
SWM FIGURE #02	PROPOSED STORMWATER CATCHMENT AREAS



CLIENT
HILDEN HOMES

393 SIDNEY STREET BELLEVILLE, ON K8P 3Z9

COPYRIGHT
 This drawing has been prepared solely for the intended use, thus any reproduction or distribution for any purpose other than authorized by IBI Group is forbidden. Written dimensions shall have precedence over scaled dimensions. Contractors shall verify and be responsible for all dimensions and conditions on the job, and IBI Group shall be informed of any variations from the dimensions and conditions shown on the drawing. Shop drawings shall be submitted to IBI Group for general conference before proceeding with fabrication.

IBI Group Professional Services (Canada) Inc.
 is a member of the IBI Group of companies.

ISSUES		
No.	DESCRIPTION	DATE
1	ISSUED FOR SUBMISSION	2020-12-03
2	ISSUED FOR SECOND SUBMISSION	2023-01-13

NOT FOR CONSTRUCTION

LEGEND

IBI GROUP
 Unit 6 - 61 Hyperion Court
 Kingston ON K7K 7K7 Canada
 tel 613 521 4440
 ibigroup.com

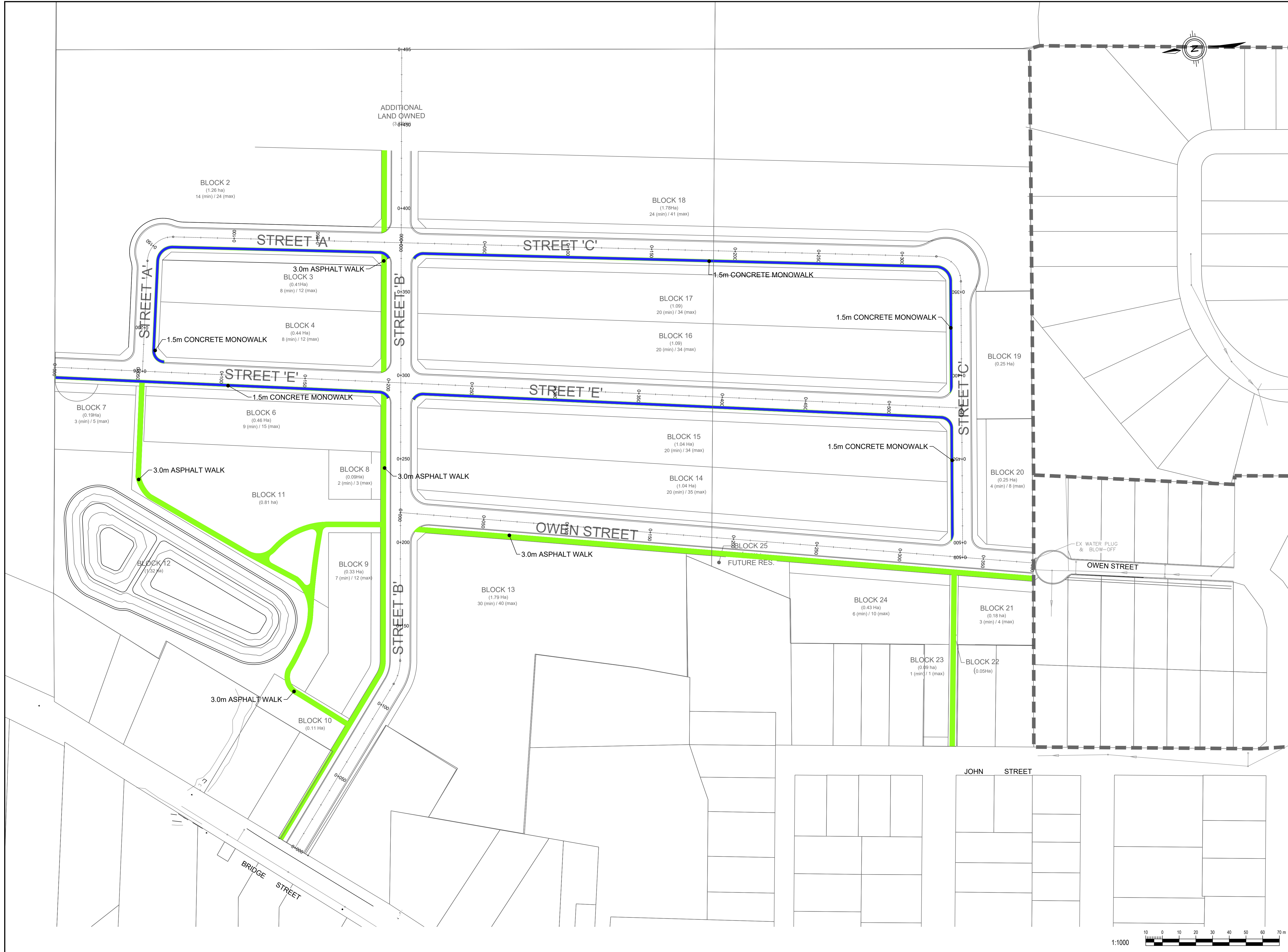
PROJECT
TULIP ESTATES SUBDIVISION
 12697 Loyalist Parkway
 PICTON, ON

PROJECT No. 115791	SCALE:
DRAWN BY: MH	CHECKED BY: MM
PROJECT MGR: MM	APPROVED BY: BT

SHEET TITLE
PHASING PLAN

SHEET NUMBER C-100	ISSUE 2
------------------------------	-------------------

File Location: \\canest.ibigroup.com\JIT0115791_Hilden\PIcton\6.9 Drawings\Show\Layouts\115791_C100_Phasing_Plan.dwg Last Saved: January 11, 2023, by mayam.hajmiri@ibigroup.com Plotted: Monday, February 6, 2023 2:07:22 PM by Nino Alvarez



CLIENT
HILDEN HOMES
 393 SIDNEY STREET BELLEVILLE, ON K8P 3Z9

COPYRIGHT
 This drawing has been prepared solely for the intended use, thus any reproduction or distribution for any purpose other than authorized by IBI Group is forbidden. Written dimensions shall have precedence over scaled dimensions. Contractors shall verify and be responsible for all dimensions and conditions on the job, and IBI Group shall be informed of any variations from the dimensions and conditions shown on the drawing. Shop drawings shall be submitted to IBI Group for general confirmation before proceeding with fabrication.
 IBI Group Professional Services (Canada) Inc.
 is a member of the IBI Group of companies.

ISSUES		
No.	DESCRIPTION	DATE
1	ISSUED FOR SUBMISSION	2020-12-03
2	ISSUED FOR SECOND SUBMISSION	2023-01-13

NOT FOR CONSTRUCTION

LEGEND

- 3 m ASPHALT WALKWAY
- 1.5 m CONCRETE MONOLITHIC SIDEWALK
- PROPOSED DEVELOPMENT BOUNDARIES

IBI GROUP
 Unit 6 - 61 Hyperion Court
 Kingston ON K7K 7K7 Canada
 tel 613 521 4440
 ibigroup.com

PROJECT
TULIP ESTATES SUBDIVISION
 12697 Loyalist Parkway
 PICTON, ON

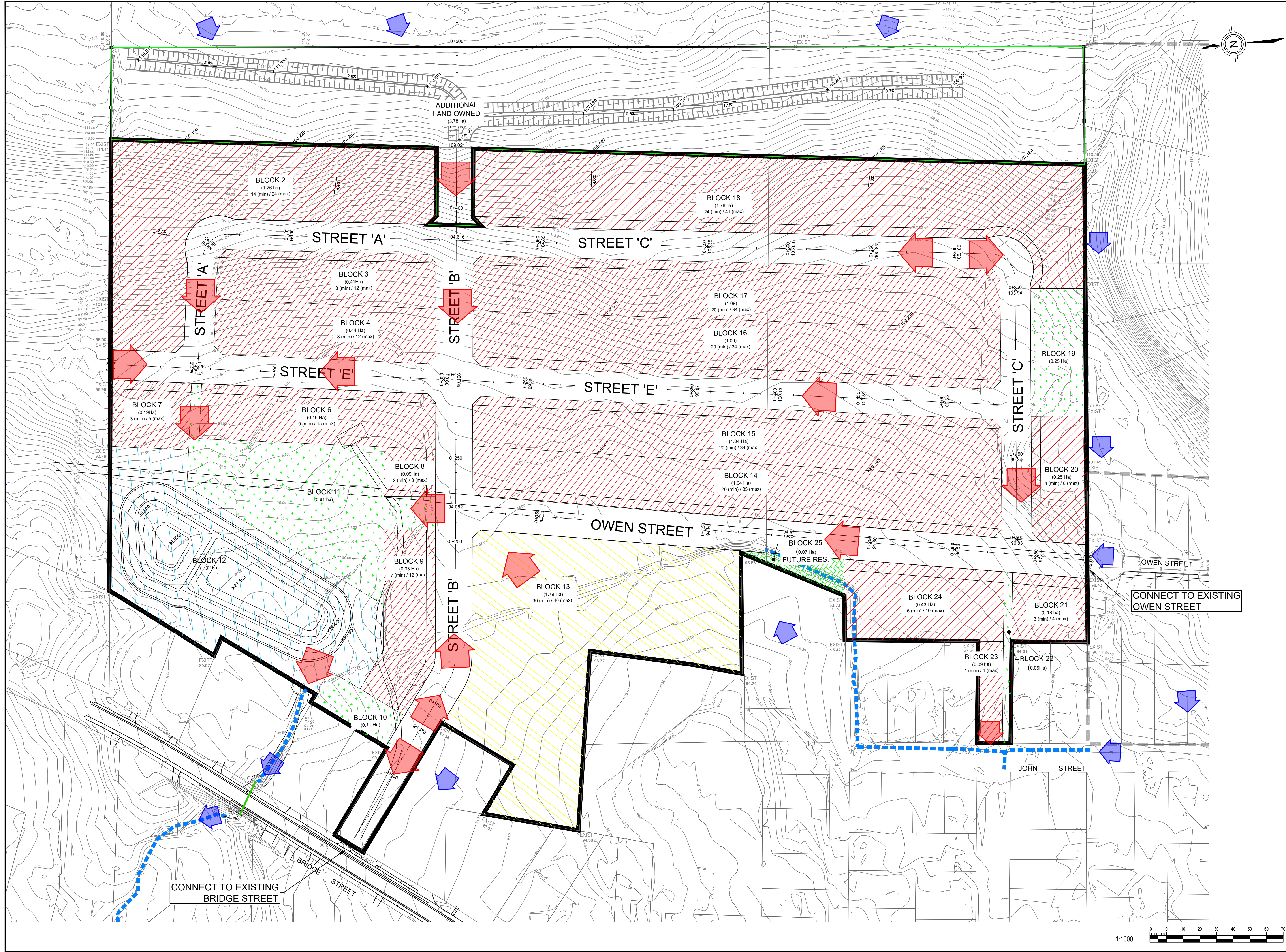
PROJECT No. 115791	SCALE:
DRAWN BY: MH	CHECKED BY: MM
PROJECT MGR: MM	APPROVED BY: BT

SHEET TITLE
ACTIVE TRANSPORTATION PLAN

SHEET NUMBER C-101	ISSUE 2
------------------------------	-------------------

1:1000

File Location: \\1115791_Hilden\PIcton\115791_C101_Subdivision Road Plan.dwg Last Saved: February 6, 2023, by rino.alvarez Plotted: Tuesday, February 7, 2023 9:54:46 AM by Rino Alvarez



CLIENT
HILDEN HOMES

393 SIDNEY STREET BELLEVILLE, ON K8P 3Z9

COPYRIGHT
This drawing has been prepared solely for the intended use, thus any reproduction or distribution for any purpose other than authorized by IBI Group is forbidden. Written dimensions shall have precedence over scaled dimensions. Contractors shall verify and be responsible for all dimensions and conditions on the job, and IBI Group shall be informed of any variations from the dimensions and conditions shown on the drawing. Shop drawings shall be submitted to IBI Group for general conference before proceeding with fabrication.

IBI Group Professional Services (Canada) Inc.
is a member of the IBI Group of companies.

ISSUES

No.	DESCRIPTION	DATE
1	ISSUED FOR SUBMISSION	2020-12-03
2	ISSUED FOR SECOND SUBMISSION	2023-01-13

LEGEND

- EXISTING GROUND CONTOUR
- EXISTING ELEVATION
- PROPOSED ELEVATION
- PROPOSED SLOPE
- PROPOSED DEVELOPMENT BOUNDARIES
- PROPOSED MAJOR OVERLAND FLOW ROUTE
- EXISTING MAJOR OVERLAND FLOW ROUTE

PROJECT
TULIP ESTATES SUBDIVISION

12697 Loyalist Parkway
PICTON, ON

PROJECT No. 115791
SCALE: 1:1000

DRAWN BY: MM
CHECKED BY: MM

PROJECT MGR: MM
APPROVED BY: BT

SHEET TITLE
GRADING PLAN

SHEET NUMBER C-200
ISSUE 2

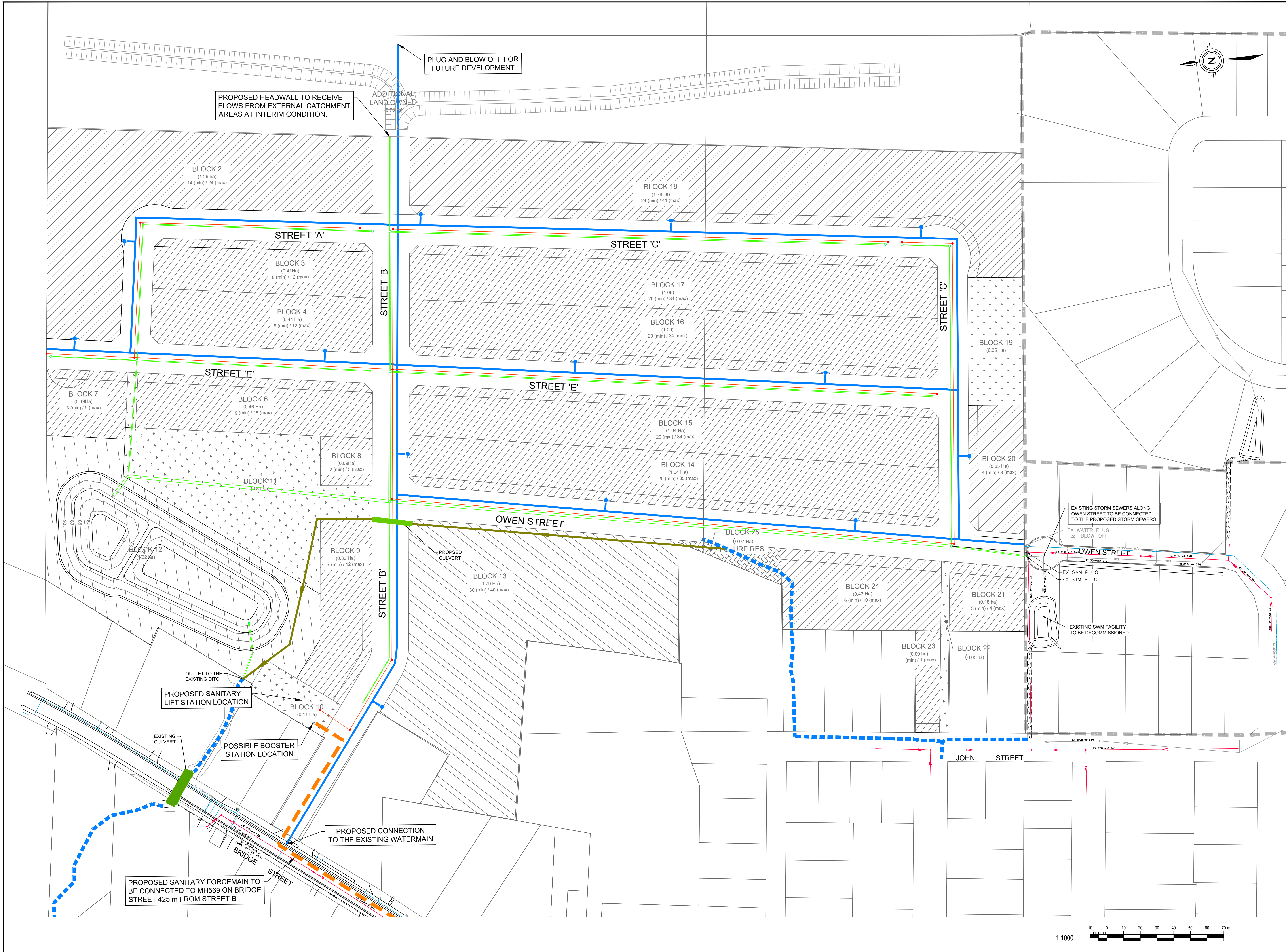
1:1000

0 10 20 30 40 50 60 70 m

NOT FOR CONSTRUCTION

IBI GROUP
Unit 6 - 61 Hyperion Court
Kingston ON K7K 7K7 Canada
Tel: 613.521.4440
ibigroup.com

File Location: \\canwest.ibigroup.com\JIT\115791_Hilden\PIcton6.9 Drawings\Subdivision Grading Plan.dwg Last Saved: January 10, 2023, by marvram@mr.fiatr Project: Monday, February 6, 2023 2:05:30 PM by Nino Alvarez



CLIENT
HILDEN HOMES

393 SIDNEY STREET BELLEVILLE, ON K8P 3Z9

COPYRIGHT
This drawing has been prepared solely for the intended use, and any reproduction or distribution for any purpose other than that authorized by IBI Group is forbidden. Written dimensions shall have precedence over scaled dimensions. Contractors shall verify and be responsible for all dimensions and conditions on the site, and IBI Group shall be relieved of any liability from the dimensions and conditions shown on this drawing. Shop drawings shall be submitted to IBI Group for general performance before proceeding with fabrication.
IBI Group Professional Services (Canada) Inc. is a member of the IBI Group of companies.

ISSUES

No.	DESCRIPTION	DATE
1	ISSUED FOR SUBMISSION	2020-12-03
2	ISSUED FOR SECOND SUBMISSION	2023-01-13

NOT FOR CONSTRUCTION

LEGEND

- PROPOSED WATER MAIN
- PROPOSED FIRE HYDRANT
- EXISTING WATER MAIN
- PROPOSED STORM SEWER
- PROPOSED STORM MANHOLE
- EXISTING STORM SEWER
- EXISTING STORM MANHOLE
- PROPOSED SANITARY SEWER
- PROPOSED SANITARY MANHOLE
- EXISTING SANITARY SEWER
- EXISTING SANITARY MANHOLE
- STORM DRAIN
- CULVERT
- SANITARY FORCEMAIN

IBI GROUP
Unit 6 - 61 Hyperion Court
Kingston ON K7K 7K7 Canada
Tel: 613 521 4440
ibigroup.com

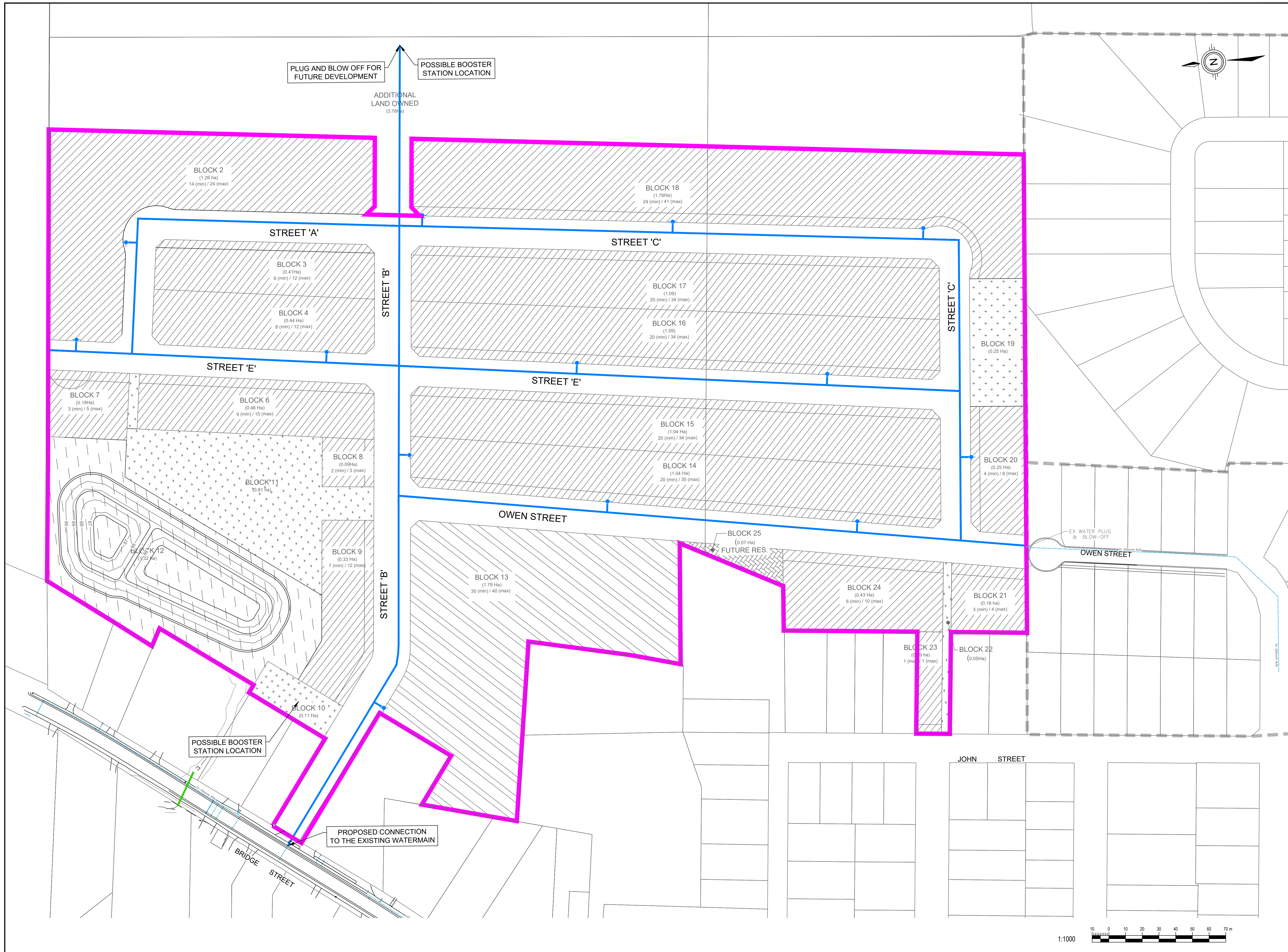
PROJECT
TULIP ESTATES SUBDIVISION
12697 Loyalist Parkway
PICTON, ON

PROJECT No. 115791
SCALE:
DRAWN BY: MH
CHECKED BY: MM
PROJECT MGR: MM
APPROVED BY: BT

SHEET TITLE
GENERAL SERVICING PLAN

SHEET NUMBER C-300
ISSUE 2

File Location: \\canesat.ibigroup.com\IT\0115791_Hilden\PIcton\6.9 Drawings\Subdivisions\115791_C300_General Servicing Plan.dwg Last Saved: December 23, 2022, by: mawm\hjm\mr\latta Printed: Monday, February 6, 2023 2:27:12 PM by: Nino Alvarez



CLIENT
HILDEN HOMES
 393 SIDNEY STREET BELLEVILLE, ON K8P 3Z9

COPYRIGHT
 This drawing has been prepared solely for the intended use, and any reproduction or distribution for any purpose other than that authorized by IBI Group is forbidden. Written dimensions shall have precedence over scaled dimensions. Contractors shall verify and be responsible for all dimensions and conditions on the job, and IBI Group shall be relieved of any liabilities from the dimensions and conditions shown on this drawing. Shop drawings shall be submitted to IBI Group for general performance before proceeding with fabrication.
 IBI Group Professional Services (Canada) Inc.
 is a member of the IBI Group of companies.

ISSUES

No.	DESCRIPTION	DATE
1	ISSUED FOR SUBMISSION	2020-12-03
2	ISSUED FOR SECOND SUBMISSION	2023-01-13

NOT FOR CONSTRUCTION

LEGEND

- PROPOSED WATER MAIN
- PROPOSED FIRE HYDRANT
- DEVELOPMENT BOUNDARY

IBI GROUP
 Unit 6 - 61 Hyperion Court
 Kingston ON K7K 7K7 Canada
 Tel 613 521 4440
 ibigroup.com

PROJECT
TULIP ESTATES SUBDIVISION
 12697 Loyalist Parkway
 PICTON, ON

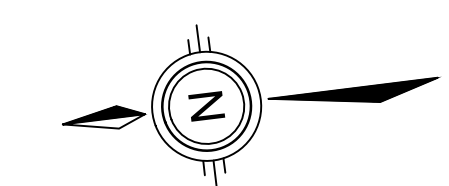
PROJECT No. 115791
SCALE:
DRAWN BY: MH
CHECKED BY: MM
PROJECT MGR: MM
APPROVED BY: BT

SHEET TITLE
WATER SERVICING PLAN

SHEET NUMBER C-301
ISSUE 2

Scale: 1:1000
 0 10 20 30 40 50 60 70 m

File Location: \\115791_Hilden\Projects\115791_C301_Water Servicing Plan.dwg Last Saved: January 13, 2023, by nino.alvarez. Plotted: Monday, February 6, 2023 1:57:36 PM by Nino Alvarez



CLIENT
HILDEN HOMES
393 SIDNEY STREET BELLEVILLE, ON K8P 3Z9

COPYRIGHT
This drawing has been prepared solely for the intended use, and any reproduction or distribution for any purpose other than authorized by IBI Group is forbidden. Written dimensions shall have precedence over scaled dimensions. Contractors shall verify and be responsible for all dimensions and conditions on the job, and IBI Group shall be relieved of any liability from the dimensions and conditions shown on the drawing. Shop drawings shall be submitted to IBI Group for general concurrence before proceeding with fabrication.
IBI Group Professional Services (Canada) Inc.
is a member of the IBI Group of companies.

ISSUES		
No.	DESCRIPTION	DATE
1	ISSUED FOR SUBMISSION	2020-12-03
2	ISSUED FOR SECOND SUBMISSION	2023-01-13

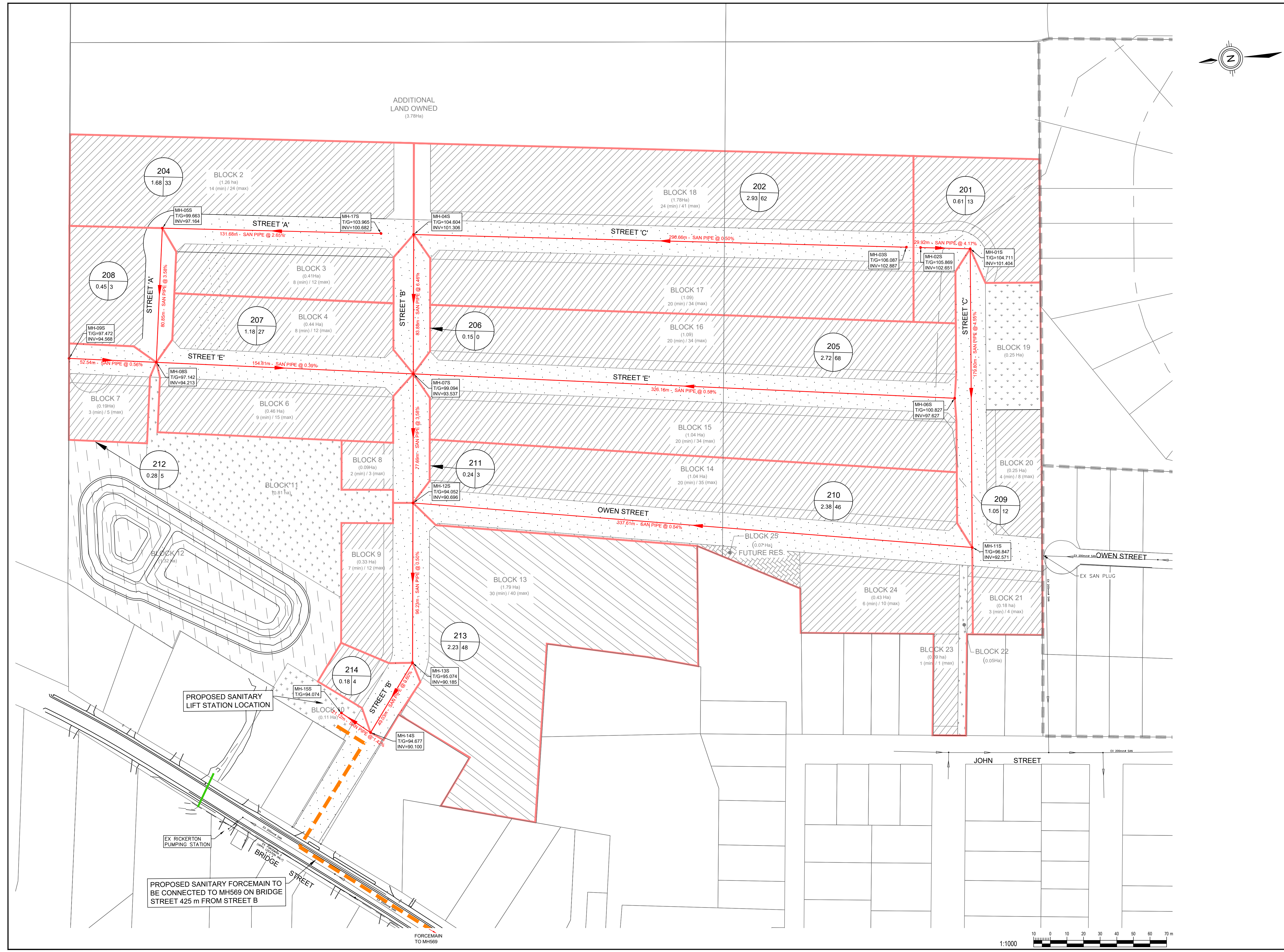
NOT FOR CONSTRUCTION



LEGEND

- PROPOSED SANITARY SEWER
- PROPOSED SANITARY MANHOLE
- EXISTING SANITARY SEWER
- EXISTING SANITARY MANHOLE
- TRIBUTARY AREA
- SANITARY FORCEMAIN

EXT-04
 8.24 125
 ← AREA NUMBER
 ← UNITS / ZONING
 ← AREA (HA)



IBI GROUP
Unit 6 - 61 Hyperion Court
Kingston ON K7K 7K7 Canada
Tel: 613 531 4440
ibigroup.com

PROJECT
TULIP ESTATES SUBDIVISION
12697 Loyalist Parkway
PICTON, ON

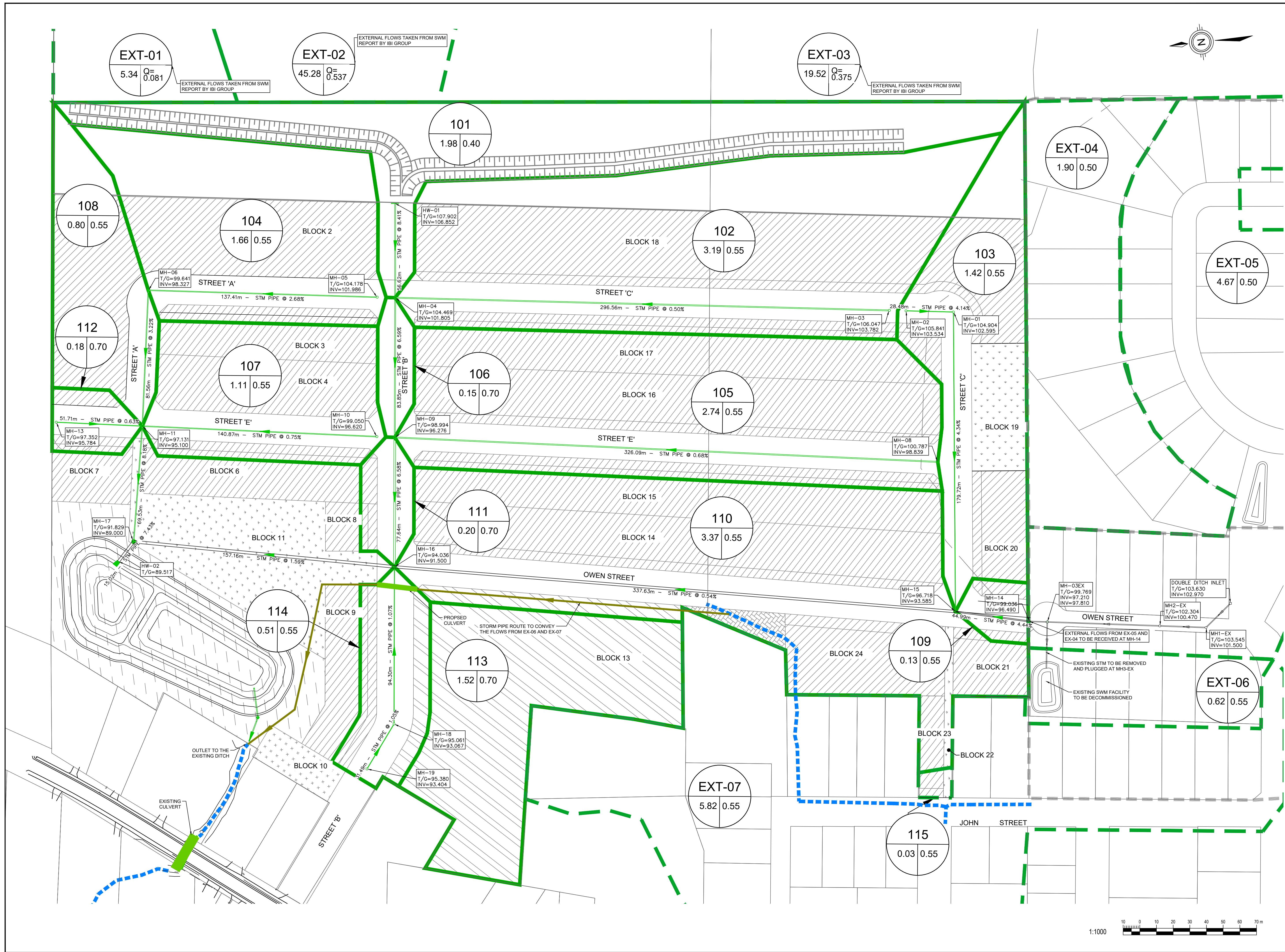
PROJECT No. 115791	SCALE:
DRAWN BY: MH	CHECKED BY: MM
PROJECT MGR: MM	APPROVED BY: BT

SHEET TITLE
SANITARY SERVICING PLAN

SHEET NUMBER C-302	ISSUE 2
------------------------------	-------------------



File Location: \\canest.ibigroup.com\JIT\0115791_Hilden\Photos\6.9 Drawings\Shovel\layouth\115791_C302_Sanitary Servicing Plan.dwg Last Saved: December 22, 2022, by: maryam.hajimr@ibigroup.com Plotted: Monday, February 6, 2023 2:37:01 PM by: Niro Awanaz



CLIENT
HILDEN HOMES

393 SIDNEY STREET BELLEVILLE, ON K8P 3Z9

COPYRIGHT
This drawing has been prepared solely for the intended use. Any reproduction or distribution for any purpose other than authorized by IBI Group is forbidden. Written dimensions shall have precedence over scaled dimensions. Contractors shall verify and be responsible for all dimensions and conditions on the job, and IBI Group shall be informed of any variations from the dimensions and conditions shown on the drawing. Shop drawings shall be submitted to IBI Group for general concurrence before proceeding with fabrication.

IBI Group Professional Services (Canada) Inc.
is a member of the IBI Group of companies.

ISSUES		
No.	DESCRIPTION	DATE
1	ISSUED FOR SUBMISSION	2020-12-03
2	ISSUED FOR SECOND SUBMISSION	2023-01-13

NOT FOR CONSTRUCTION

LEGEND

- PROPOSED STORM SEWER
- PROPOSED STORM MANHOLE
- EXISTING STORM SEWER
- EXISTING STORM MANHOLE
- INTERNAL CATCHMENT AREA
- EXTERNAL CATCHMENT AREA
- CULVERT CROSSING
- EXISTING DRAINAGE PATH
- STORM DRAIN

101
1.98 0.50
CATCHMENT AREA NUMBER
RUN-OFF COEFFICIENT
AREA (HA)

IBI GROUP
Unit 6 - 61 Hyperion Court
Kingston ON K7K 7K7 Canada
Tel: 613 521 4440
ibigroup.com

PROJECT
TULIP ESTATES SUBDIVISION

12697 Loyalist Parkway
PICTON, ON

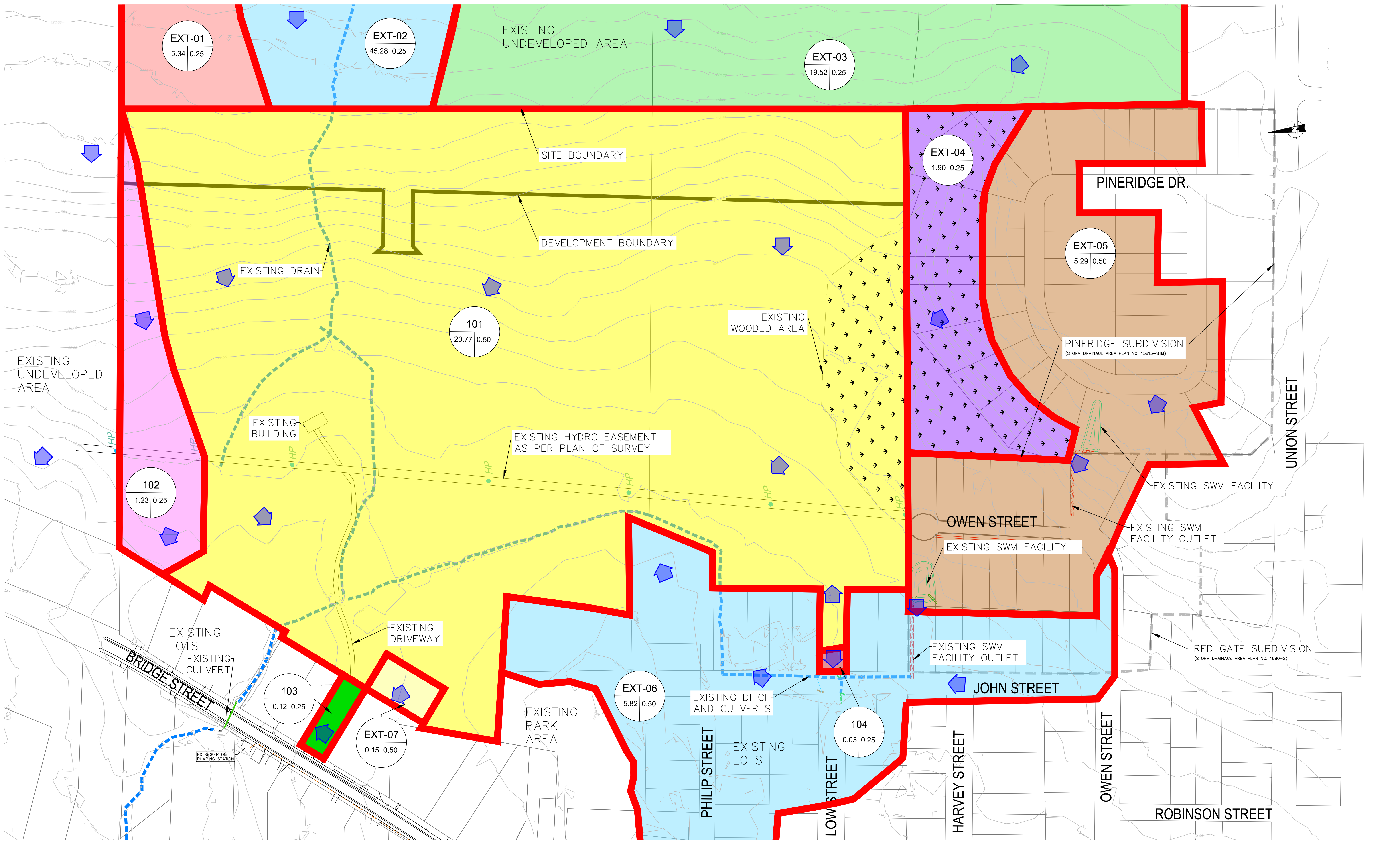
PROJECT No. 115791	SCALE:
DRAWN BY: MH	CHECKED BY: MM
PROJECT MGR: MM	APPROVED BY: BT

SHEET TITLE
STORM SEWER
SERVICING PLAN

SHEET NUMBER C-303	ISSUE 2
-----------------------	------------

1:1000

File Location: \\canwest.ibigroup.com\JIT0115791_Hilden\PIcton\6.9 Drawings\StormServicing\115791_C303_Storm Servicing Plan.dwg Last Saved: December 23, 2023 2:59:46 PM by Nino Alvarez



NOTE:
 EXISTING CONTOUR INFORMATION WITHIN THE SITE BOUNDARY HAS BEEN DERIVED FROM TOPOGRAPHIC FIELD SURVEY.
 EXTERNAL AREAS CONTOUR INFORMATION HAS BEEN DERIVED FROM LIDAR AND GIS CONTOURS DATA.

1:1250

LEGEND		CATCHMENT AREA NUMBER		EXISTING DRAINAGE DIRECTION	
	DEVELOPMENT BOUNDARY		CATCHMENT AREA NUMBER		EXISTING DRAINAGE DIRECTION
	EXISTING DRAINAGE PATH		RUN-OFF COEFFICIENT		HP - EXISTING HYDROPOLE
	CATCHMENTS AREA BOUNDARY		AREA (HA)		WOODED AREA
	EXISTING CONTOUR				
	EXISTING CULVERT				

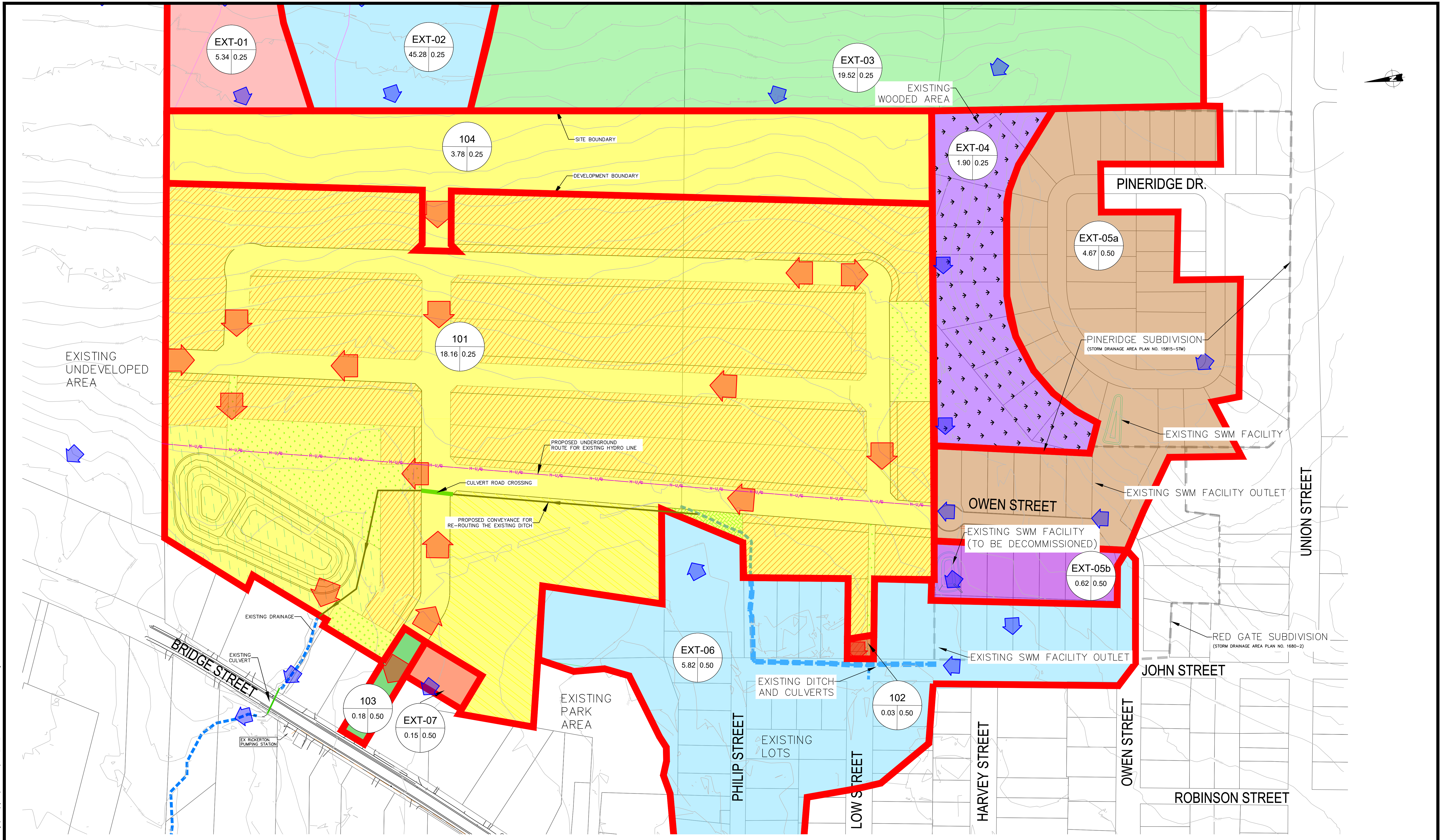
IBI GROUP
 Unit 6 - 61 Hyperton Court
 Kingston ON K7K 7K7 Canada
 tel 613 531 4440
 ibigroup.com

Project Title:
**HILDEN HOMES
 TULIP ESTATES
 SUBDIVISION**
 PRINCE EDWARD COUNTY

Drawing Title:
**PRE-DEVELOPMENT STORM
 CATCHMENT PLAN**

Designed By:	M.M.	Scale:	1:1250
Drawn By:	M.H.	Drawing File:	115791_C400_Pre-Dev Storm Catchment Plan.dwg
Checked By:	M.M.	Project No.:	115791
Date:	JAN, 2023	Drawing No.:	C400

\\c:\est\ibigroup.com\10\115791_HildenHomes\115791_C400_Pre-Dev Storm Catchment Plan.dwg 2023-01-06 1:42 PM Nina Alvarez



NOTE: EXISTING CONTOUR INFORMATION WITHIN THE SITE BOUNDARY HAS BEEN DERIVED FROM TOPOGRAPHIC FIELD SURVEY. EXTERNAL AREAS CONTOUR INFORMATION HAS BEEN DERIVED FROM LIDAR AND GIS CONTOURS DATA.



No.	By	Date	Revisions
1	MM	2023-01-XX	ISSUED FOR FSR APPROVAL

LEGEND	
	DEVELOPMENT BOUNDARY
	CATCHMENTS AREA BOUNDARY
	EXISTING CONTOUR
	EXISTING CULVERT
	UNDERGROUND HYDRO LINE

	CATCHMENT AREA NUMBER
	RUN-OFF COEFFICIENT
	AREA (HA)

	EXISTING DRAINAGE DIRECTION
	PROPOSED DRAINAGE DIRECTION
	EXISTING DRAINAGE PATH
	WOODED AREA

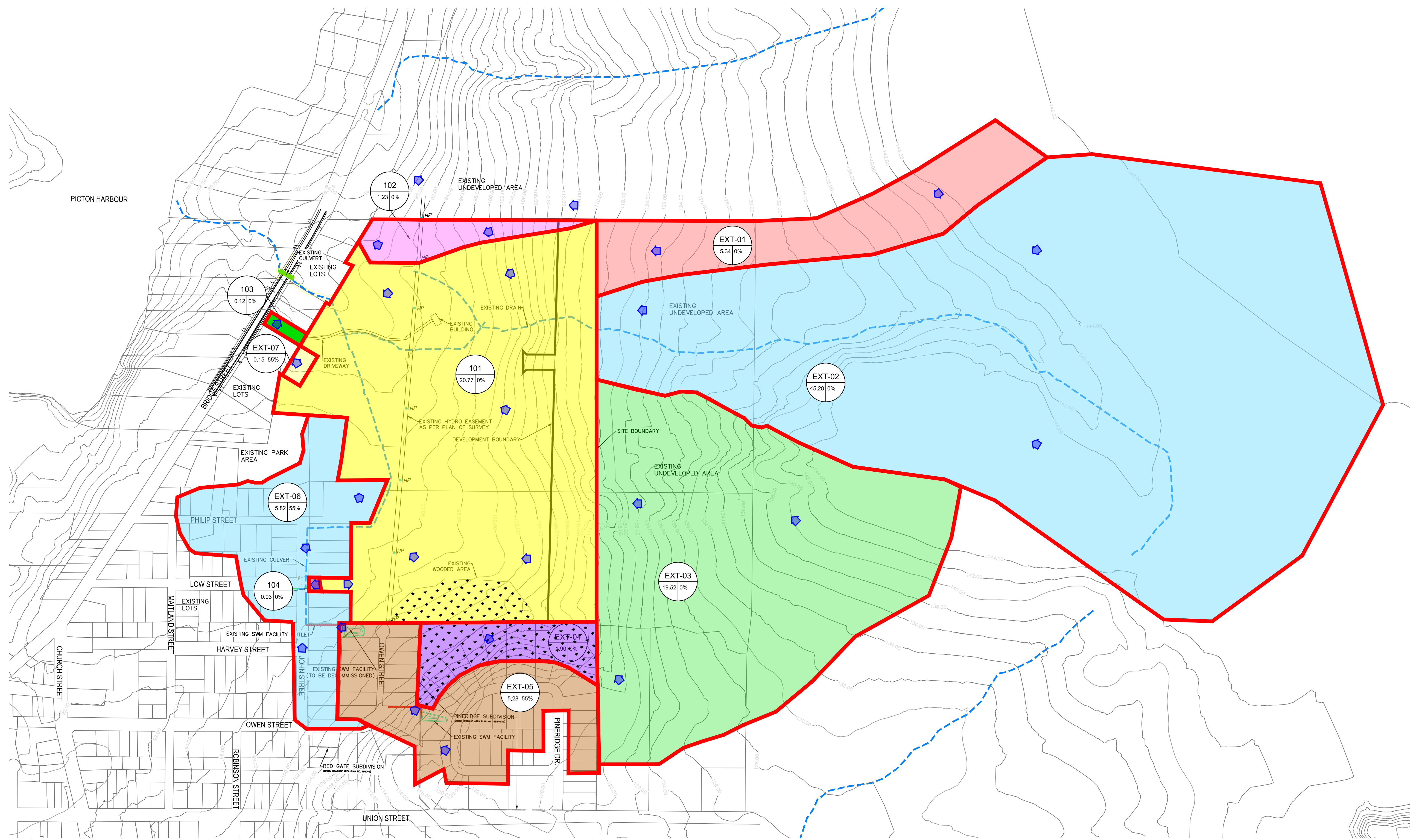
IBI GROUP
 Unit 6 - 61 Hyperton Court
 Kingston ON K7K 7K7 Canada
 tel 613 531 4440
 ibigroup.com

Project Title: **HILDEN HOMES
 TULIP ESTATES
 SUBDIVISION**
 PRINCE EDWARD COUNTY

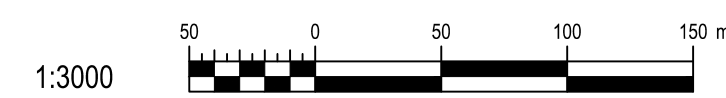
Drawing Title: **POST-DEVELOPMENT STORM
 CATCHMENT PLAN**

Designed By:	M.M.	Scale:	1:1250
Drawn By:	M.H.	Drawing File:	115791_C401_Post-Dev Storm Catchment Plan.dwg
Checked:	M.M.	Project No.:	115791
Date:	JAN, 2023	Drawing No.:	C401

\\cvent\ibigroup.com\10\115791_HildenHomes\115791_C401_Post-Dev Storm Catchment Plan.dwg 2023-02-08 3:04 PM Nina Alvarez



NOTE:
EXISTING CONTOUR INFORMATION WITHIN THE SITE BOUNDARY HAS BEEN DERIVED FROM TOPOGRAPHIC FIELD SURVEY.
EXTERNAL AREAS CONTOUR INFORMATION HAS BEEN DERIVED FROM LIDAR AND GIS CONTOURS DATA.



LEGEND

- DEVELOPMENT BOUNDARY
- EXISTING DRAINAGE PATH
- CATCHMENTS AREA BOUNDARY
- EXISTING CONTOUR
- EXISTING CULVERT
- HP - EXISTING HYDROPOLE
- CATCHMENT AREA NUMBER
- % IMPERVIOUSNESS
- AREA (ha)
- EXISTING DRAINAGE DIRECTION
- WOODED AREA

No.	By	Date	Revisions
1	MM	2023-01-XX	ISSUED FOR FSR APPROVAL

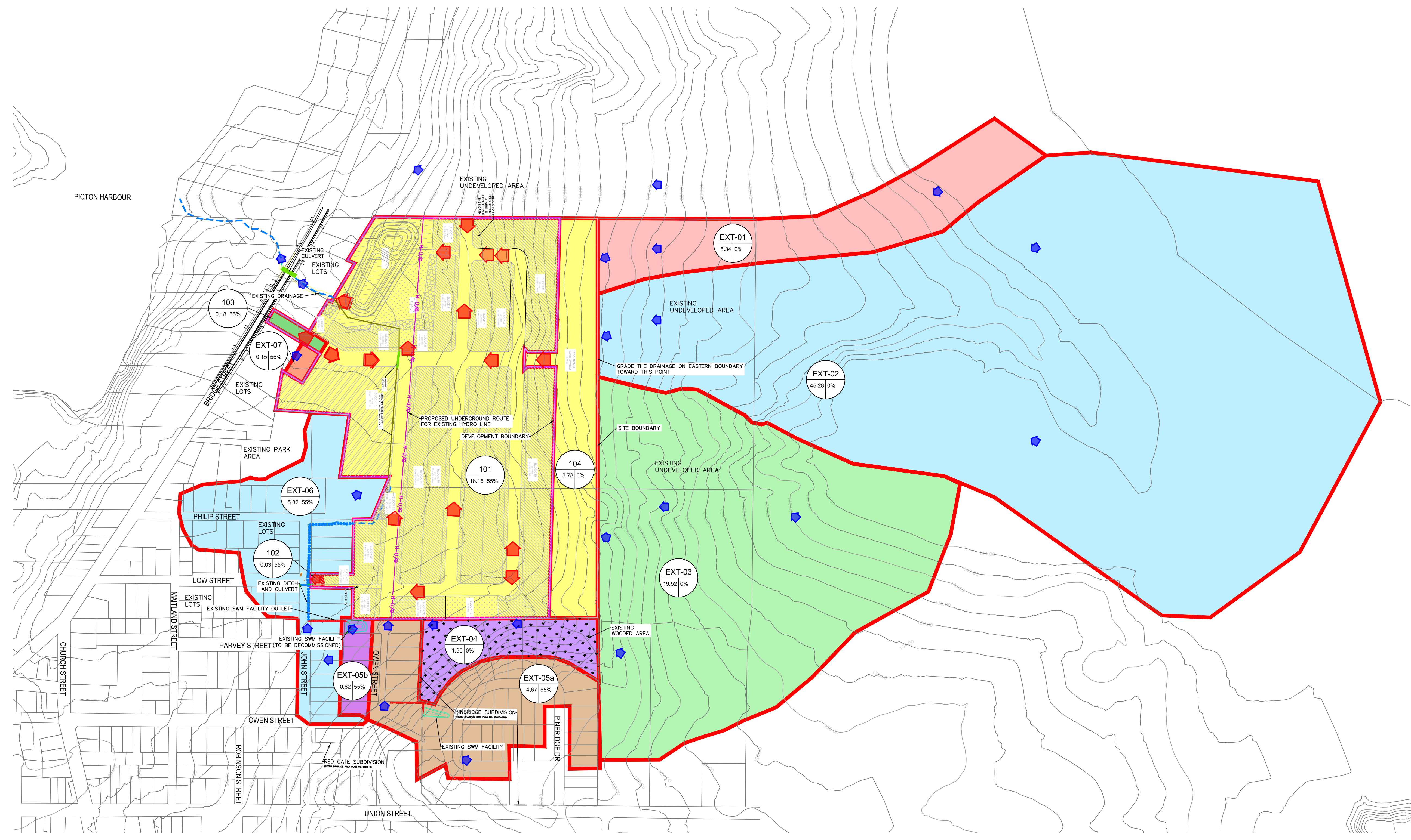
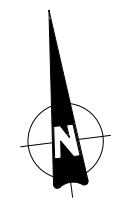


Project Title:
**HILDEN HOMES
TULIP ESTATES
SUBDIVISION
PRINCE EDWARD COUNTY**

Drawing Title:
**SWM FIGURE #01 - EXISTING
STORMWATER CATCHMENT AREAS**

Designed :	M.M.	Scale:	1:3000
Drawn By:	M.H.	Drawing File:	115791_SWM Fig#01 - Ex SWM Catchment Areas.dwg
Checked:	M.M.	Project No.:	115791
Date:	JAN 2023	Drawing No.:	C402

\\cvent\ibigroup.com\10\115791_Hilden\Projects\Subdivisions\115791_SWM Fig#01 - Ex SWM Catchment Areas.dwg 2023-02-08 1:48 PM Neo Alvarez



NOTE:
 EXISTING CONTOUR INFORMATION WITHIN THE SITE BOUNDARY HAS BEEN DERIVED FROM TOPOGRAPHIC FIELD SURVEY.
 EXTERNAL AREAS CONTOUR INFORMATION HAS BEEN DERIVED FROM LIDAR AND GIS CONTOURS DATA.



No.	By	Date	Revisions
1	MM	2023-01-XX	ISSUED FOR FSR APPROVAL

LEGEND

- DEVELOPMENT BOUNDARY
- CATCHMENTS AREA BOUNDARY
- EXISTING CONTOUR
- EXISTING CULVERT
- UNDERGROUND HYDRO LINE

EXT-04
8.24 55%
AREA (ha)

▶ EXISTING DRAINAGE DIRECTION

▶ PROPOSED DRAINAGE DIRECTION

▬▬▬▬▬▬ EXISTING DRAINAGE PATH

 WOODED AREA



IBI GROUP
 Unit 6 - 61 Hyperton Court
 Kingston ON K7K 7K7 Canada
 tel 613 531 4440
 ibigroup.com

Project Title:
**HILDEN HOMES
 TULIP ESTATES
 SUBDIVISION**
PRINCE EDWARD COUNTY

Drawing Title:
**SWM FIGURE #02 - PROPOSED
 STORMWATER CATCHMENT AREAS**

Designed :	M.M	Scale:	1:3000
Drawn By:	M.H.	Drawing File:	115791_SWM Fig#02 - Post-Dev Condition SWM Figure.dwg
Checked:	M.M.	Project No.:	115791
Date:	JAN 2023	Drawing No.:	C403

\\convent\ibigroup.com\101\115791_Hilden\Projects\Subdivisions\115791_SWM_Fig#02 - Post-Dev Condition SWM Figures.dwg 2023-02-08 1:51 PM No. Alvarez