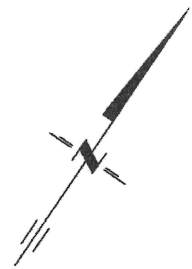
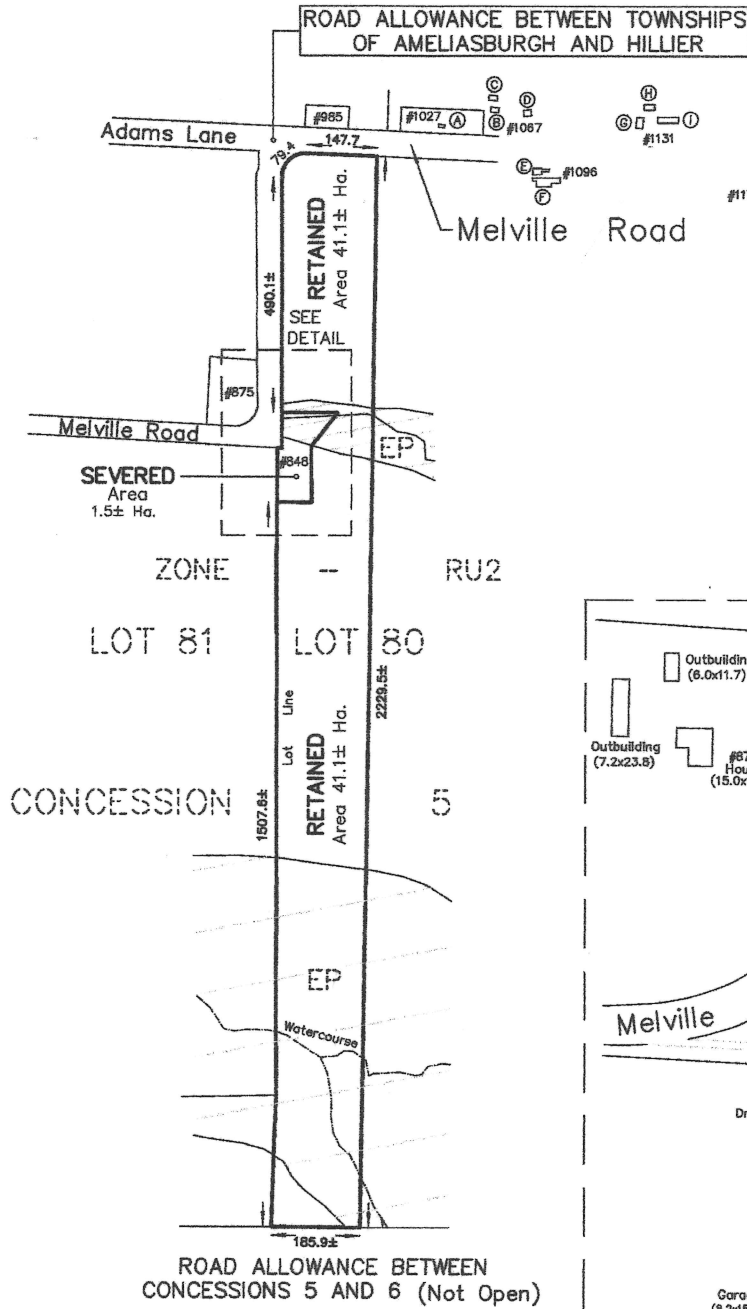
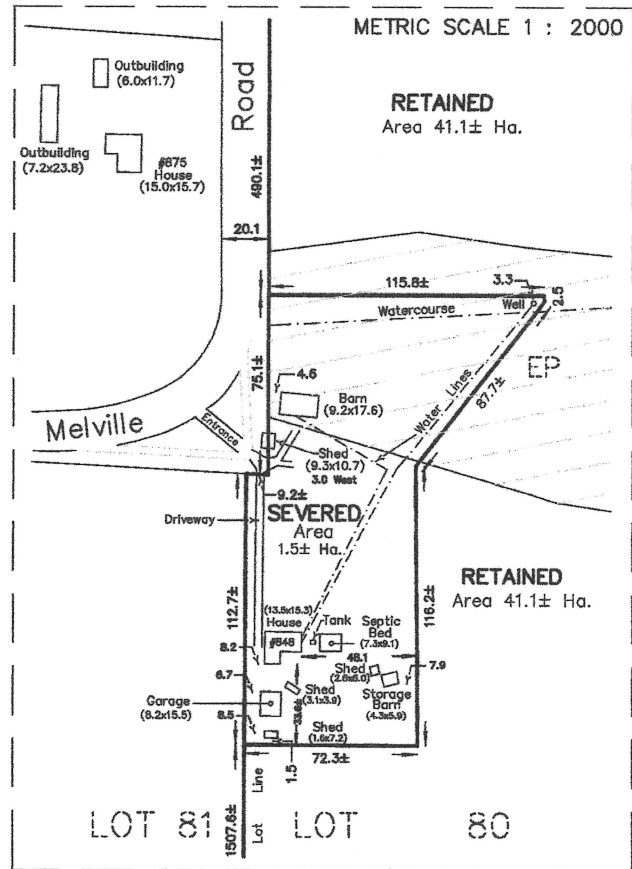


SKETCH for SEVERANCE APPLICATION

METRIC SCALE 1 : 10000



SCHEDULE		
LABEL	DESCRIPTION	DISTANCE TO PROPERTY
(A)	BARN (6.0x12.8)	133.2 (Not to Scale)
(B)	BARN (10.4x17.1)	254.2
(C)	BARN (10.7x18.0)	260.5
(D)	BARN (12.7x15.6)	317.7
(E)	BARN (13.3x33.5)	325.9
(F)	BARN (19.4x56.7)	325.3
(G)	BARN (14.2x21.8)	543.1
(H)	BARN (11.3x22.4)	589.1
(I)	BARN (11.9x43.4)	565.0
(J)	BARN (12.4x24.9)	815.4



NOTES :

848 MELVILLE ROAD
 PART OF LOT 80
 CONCESSION 5
 TOWNSHIP OF HILLIER
 NOW IN THE MUNICIPALITY OF THE
 COUNTY OF PRINCE EDWARD

DIMENSIONS AND INFORMATION SHOWN ARE DERIVED FROM PLANS 47R-872,
 47R-873, 47R-4367, 47R-7628, 47R-7780, 47R-7991,
 AND MUNICIPAL RESOURCES.

DISTANCES SHOWN ON THIS PLAN ARE IN METRES
 AND CAN BE CONVERTED TO FEET BY DIVIDING BY 0.3048.

THIS SKETCH IS AN ORIGINAL IF EMBOSSED BY THE SURVEYOR'S SEAL.

FEBRUARY 03, 2023

CAUTION

THIS IS NOT A PLAN OF SURVEY AND SHALL NOT BE USED
 EXCEPT FOR THE PURPOSE INDICATED IN THE TITLE BLOCK

218 CHURCH STREET
 BELLEVILLE, ONTARIO

WATSON
 LAND SURVEYORS Ltd.

K8N - 3C3
 (613) 962 - 9521