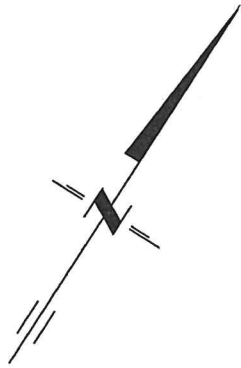


SKETCH

PART OF LOT 9
 CONCESSION LAKESIDE WEST OF CAPE VESEY
 TOWNSHIP OF NORTH MARYSBURGH
 NOW IN THE MUNICIPALITY OF
 THE COUNTY OF PRINCE EDWARD

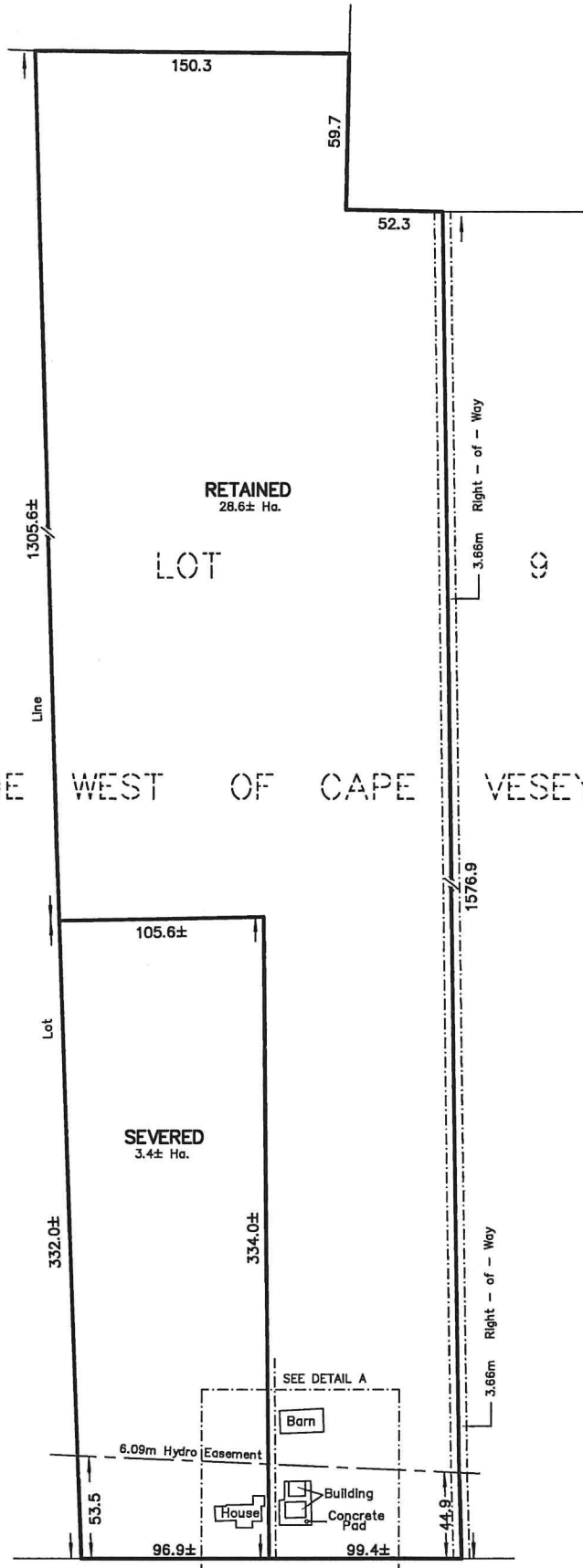
METRIC SCALE 1 : 2500



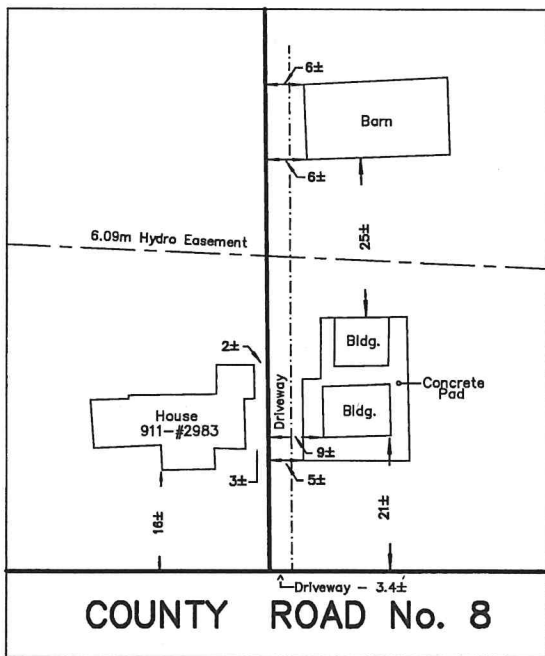
LOT 8

LOT

CONCESSION LAKESIDE WEST OF CAPE VESEY



DETAIL A



COUNTY ROAD No. 8

ENLARGEMENT NOT TO SCALE

METRIC :

DISTANCES SHOWN ON THIS PLAN ARE IN METRES
 AND CAN BE CONVERTED TO FEET BY DIVIDING BY 0.3048.

218 CHURCH STREET BELLEVILLE, ONTARIO	WATSON LAND SURVEYORS Ltd.	KBN - 3C3 (613) 962 - 9521
	NOVEMBER 02, 2020	PROJECT No 12500-H-20