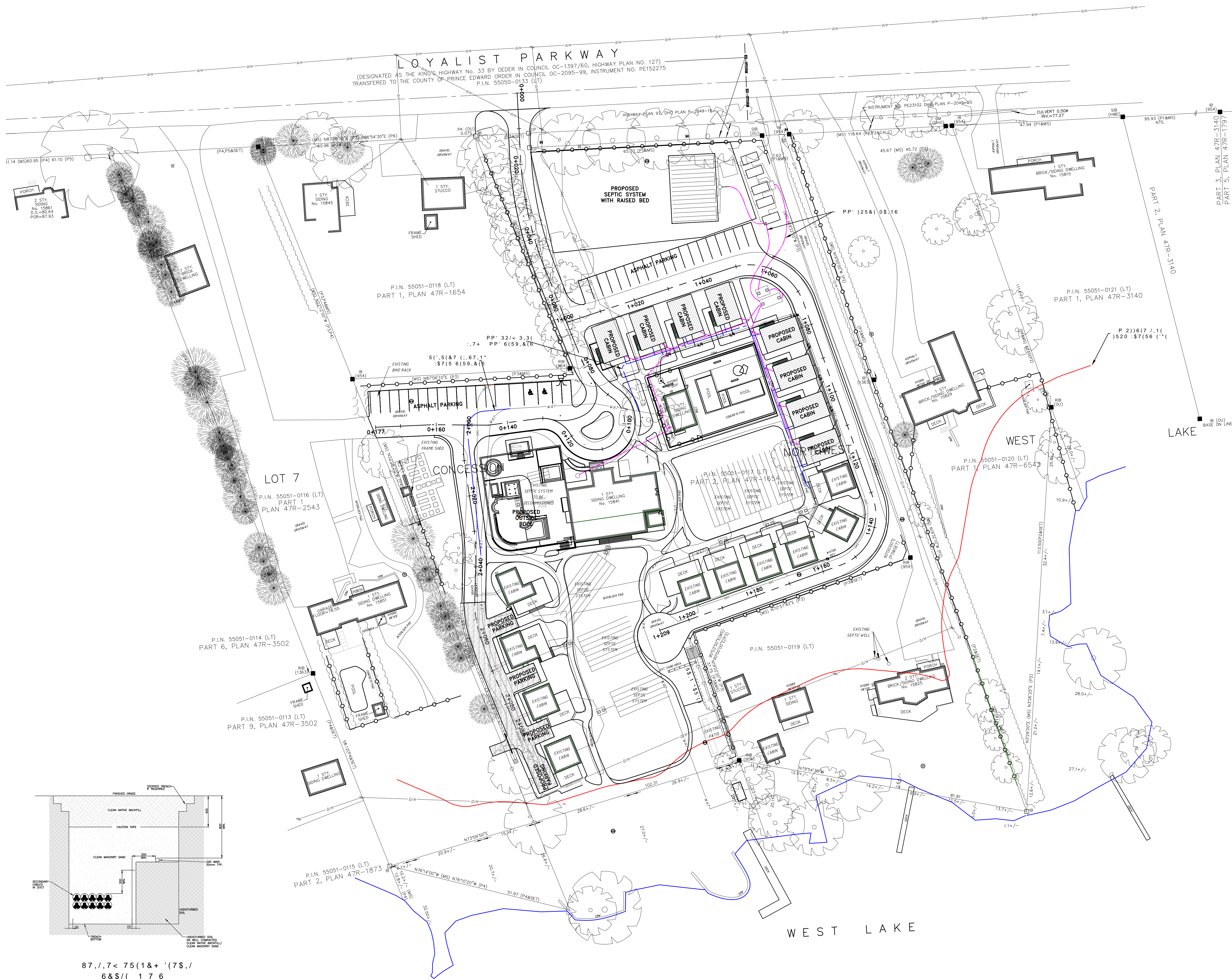


127(7232*5\$3+,& 6859(< 3529,'(' %< \$/7,0\$3 /\$1' 6859(<256,1&7,85/ \$33529!' %< 82175\$87 12 '55:1' 12 66



LOYALIST PARKWAY
(DESIGNATED AS THE KING'S HIGHWAY No. 33 BY ORDER IN COUNCIL OC-1397/60, HIGHWAY PLAN No. 127)
TRANSFERRED TO THE COUNTY OF PRINCE EDWARD ORDER IN COUNCIL OC-2095-99, INSTRUMENT NO. PE152275
P.I.N. 55050-033 (LT)

11557 1276
 511.125057,21.72 % 9(5), (' 21 6,7 35,25 72 & 200(18,1' 51< 25, 51<
 1,6&13518,6 55/ 72 % 5(3257(72 74, 82168/7517, 001, 37(1,
 511 87,17- /2&87,216 62,21 74,1 55-11& 53332, 287(74
 821755&725 6-5/ /&21, 50 74 /2&87,21 21 6,7 51' 56680(5/ /, 5, 74- 125
 30&1 52 511 87,17, 16
 (8,18-1' 74' %1&+0&5, 51' (8&5,37,21 3529, (' 125 74, 6 352, 687 12
 21+15 (10&7,216 551 72 % 8&1' 56 5 51(151&1) (10&7,21 125 51- 38&32&1

1275 & 127(1
 511,10116,216 6+2-1 55, -1 0(75(6 25 0,11,0175(6 81(66 27+(5, 61
 127(1
 511 6859(< 575 6+2-1 21 74, 6 55,1' 56 5(825(' 86,1' 5(57 7(01
 1(17 & 57, '36 24(6(9&97,216 5(15(1&1 72 870 12574 8225 157(1
 5(10&7(0
 511 (10&7,216 551, 1 5(15(1&1 72 /2&8/ 5780 15' 12(17, & 02(1
 7 8 511(685, 16&5, 51' 27+15, 41
 55, 1' 55, 127 72 % 6&8(1'

12	\$7((6&5,37,21	%<
		.668(') 25 6,7, (17 \$33529\$/	- +
		.668(') 25 6,7, (3/\$1 \$33529\$/	% 1'
		.668(') 25 6,7, (3/\$1 \$33529\$/	% 1'
		.668(') 25 6,7, (3/\$1 \$33529\$/	% 1'

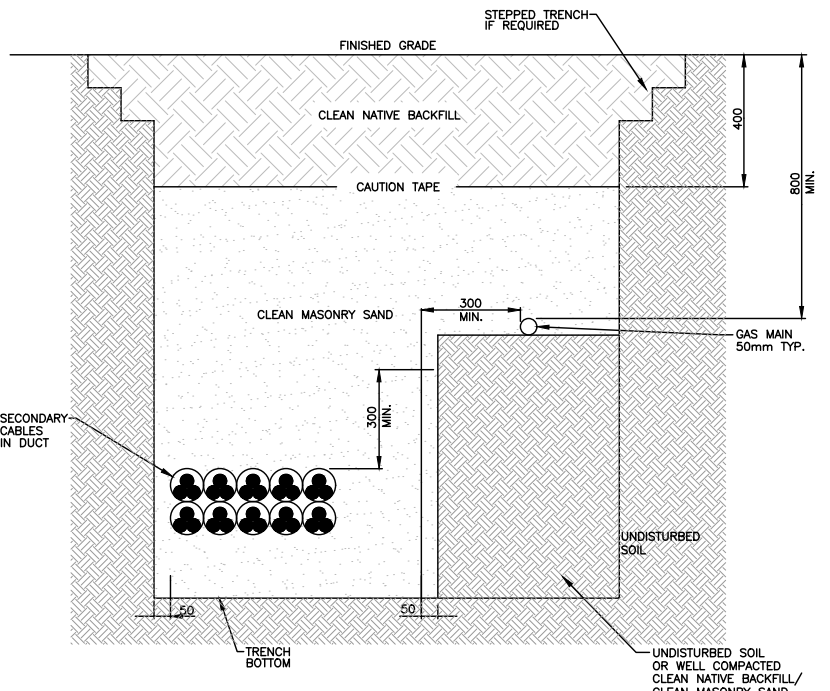
5(9,6,216

6<0%2/
 6<0%2/ (1', 1,7,21
 (, 67,1' *\$6 0(7(5
 (, 67,1' *\$5(1(3('67\$/
 (, 67,1' 29(5+(\$' , 5(1
 (, 67,1' 81' 5'5281' +< 52
 (, 67,1' *\$6 /, 1(
 (, 67,1' *\$7(5 /, 1(
 (, 67,1' 651,755< 6(59,8(1
 (, 67,1' +< 52 32/(
 (, 67,1' (1(1&
 3523(6< %281'55<
 :\$7(56 ('(1'
 352326(' 021,725,1' /1(1
 352326(' *\$7(5 /, 1(
 352326(' *\$6 /, 1(
 352326(' 81'(5'5281' +< 52
 352326(' 651,755< 6(59,8(1

: \$1'(5 7+(5(6257 /2<\$/,67 3\$5.: \$< %/220), (/ 217\$5,2

6,7 (6(59,1' 3/\$1

55:1 %< 352-(87 12
 % 1'
 ' (6,1' (%< \$7(
 % 1' 0\$5&+
 &+(.(' %< 6&8/(
 % +25,=217\$/
 82175\$87 12 '55:1' 12 66



87,1,7< 75(1&+ '(7\$.,/ 6&\$(1 7 6

127(7232*5\$3+,& 6859(< 3529,'(' %< \$/7,0\$3 /\$1' 6859(<256,1&7,85/ \$33529!' %< 82175\$87 12 '55:1' 12 66