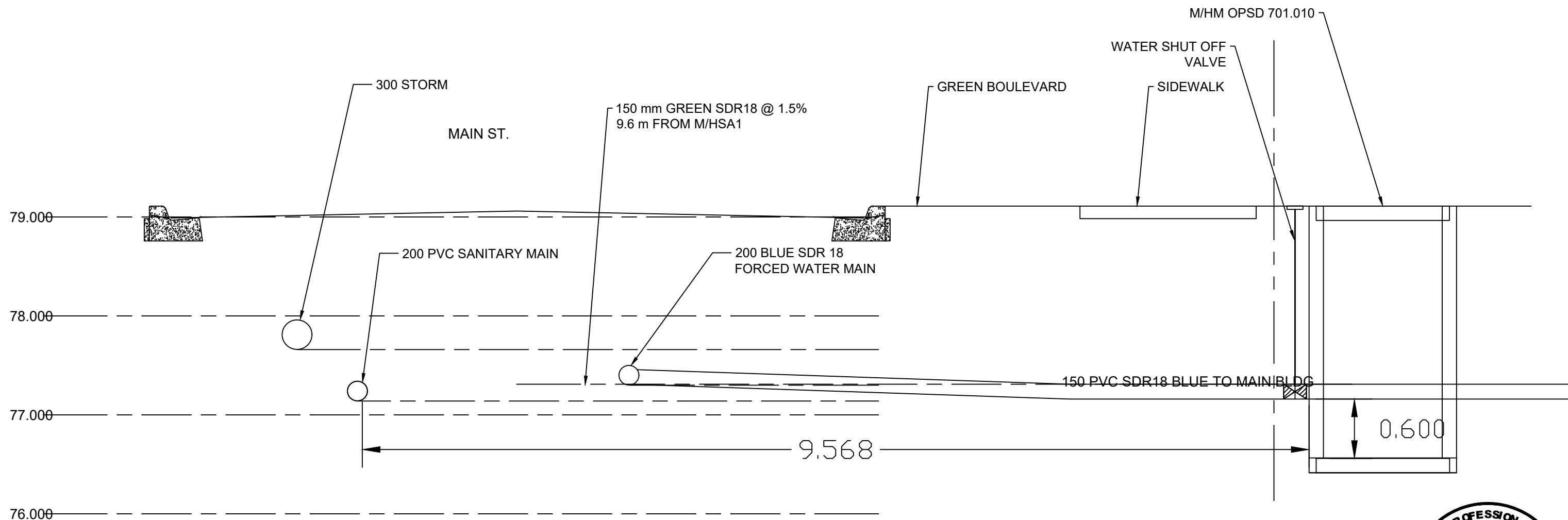
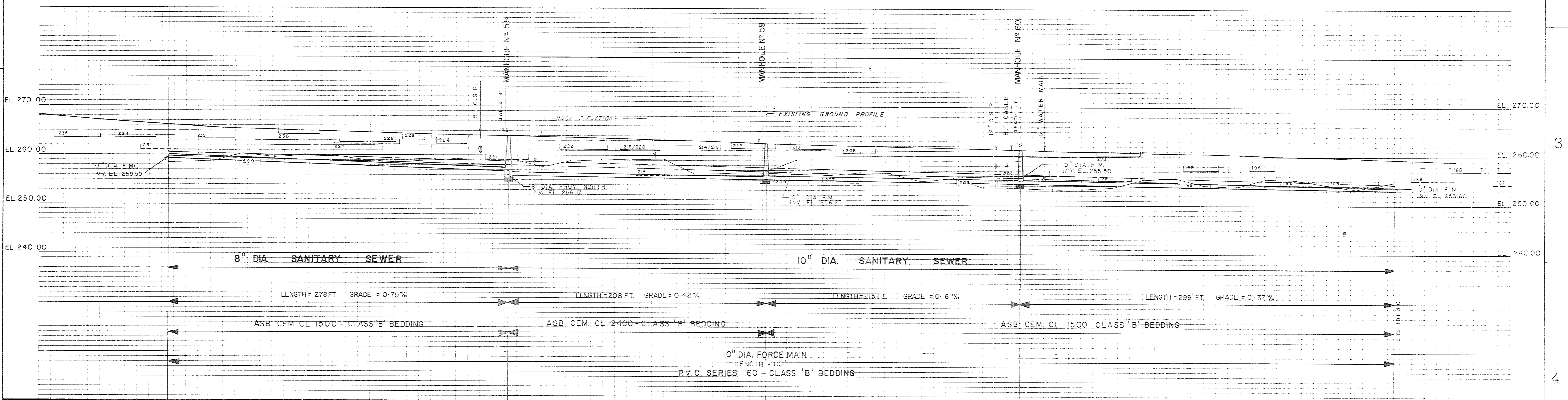
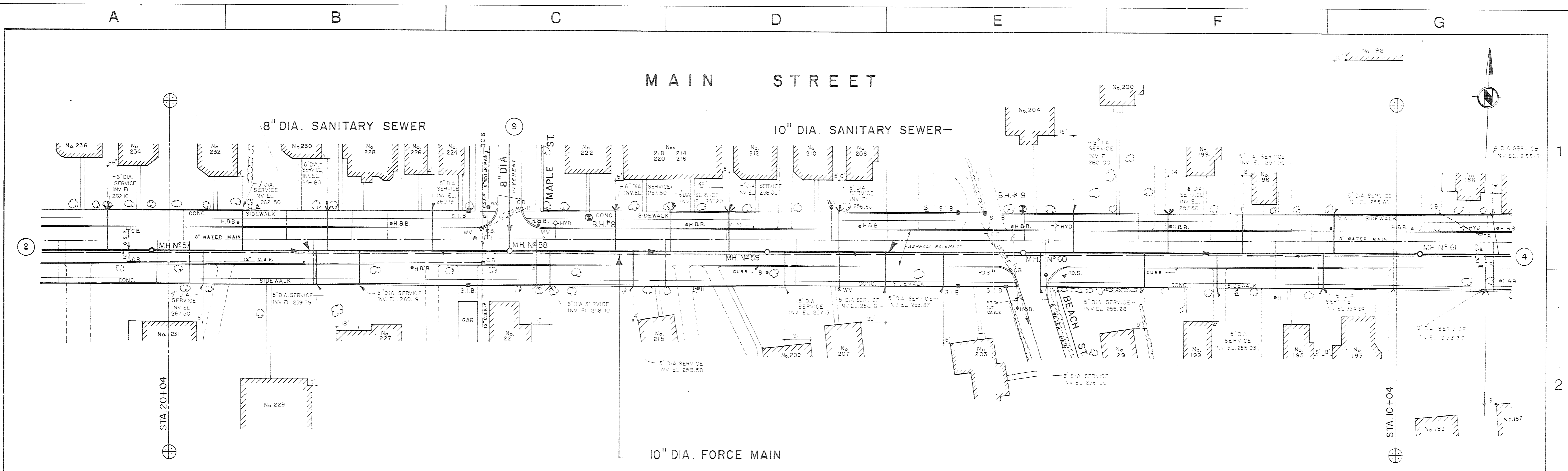


client: WELLINGTON HOTEL		HAMBLY GROUP DIVISION OF 8436550 CANADA CORPORATION tel 613 374 1746 cell 613 536 9118 Verona, Ontario	drawing no.
project: SANITARY SERVICE			SK23
title: SECTION		KOH 2W0	file: ST0107
scale: 1/2":1'	date: 2023-01-17		drawn by: EVT



client: WELLINGTON HOTEL	HAMBLY GROUP DIVISION OF 8436550 CANADA CORPORATION tel 613 374 1746 cell 613 536 9118 Verona, Ontario	drawing no. SK24 file: ST0107
project: WATER SERVICE		
title: SECTION	KOH 2W0	
scale: 1/2"=1' date: 2023-01-17 drawn by: EVT		



CHAINAGE	20+04	20+06	17+26	15+18	13+03	10+04
INVERT ELEVATION	259.10	259.10	256.90	255.13	254.62	253.10
GROUND ELEVATION	267.0	265.5	264.1	262.3	260.6	258.8
MANHOLE						
MANHOLE NO.			58	59	60	
STATION			17+26	15+18	13+03	
INVERT ELEVATION			256.01	255.03	254.21	
GROUND ELEVATION			264.1	262.3	260.6	

NOTES	CHECKED	 DESIGNER	 PROJECT MANAGER	 GORE & STORRIE LIMITED	8 8 10-INCH DIA. SANITARY SEWER 10-INCH DIA. FORCE MAIN MAIN STREET FROM STA. 10+04 TO STA. 20+04 FROM STA. 12+06 F.M. TO STA. 22+06 F.M.	ONTARIO MINISTRY OF THE ENVIRONMENT PROJECT No. 1-0139-68 CONTRACT No. 4 VILLAGE OF WELLINGTON PROVINCIAL SEWAGE WORKS PROGRAMME	GORE & STORRIE LIMITED CONSULTING ENGINEERS TORONTO ONTARIO
	CONSTRUCTION REVISIONS DATE NOV. 1980 SIGNED D.M.						

NOTES CONCERNING SERVICES

1. a) ALL SANITARY LATERALS THAT SERVE THE VARIOUS BUILDINGS ON THE PROPERTY DRAIN TO AN EXISTING 1200 mm OPSD MANHOLE [M/H] 'M/HSA2', LOCATED IN THE FRONT YARD. M/HSA2 IS TO BE RELOCATED AS SHOWN ON DWG SP3.0. THE MAIN SANITARY LATERAL FROM THE ORIGINAL BUILDING WILL BE 125 mm. THE LATERAL FROM THE FRONT YARD MANHOLE 'M/HSA2' GOES TO A PROPOSED SECOND SANITARY MANHOLE 'M/HSA1' IS 125 mm. THIS M/H IS LOCATED INSIDE THE PROPERTY. SANITARY SERVICE LATERAL IS 125 DR18 PVC PIPE TO THE MUNICIPAL PIPE CONNECTION FROM M/HSA1. THE PROJECT MANHOLES ARE TO HAVE A SOLID CASE IRON COVERS.

b) THE MINIMUM SEPARATION BETWEEN SANITARY LATERAL AND WATER LATERAL IS 2.5 m. WHERE PRACTICAL THE WATER SUPPLY AND SEWER LINES SHOULD BE SEPARATED BY 2.5 m. WHERE THE LINES CROSS THE ONTARIO MINISTRY STANDARD "F-6-1 Procedures to Govern Separation of Sewers and Watermains" WILL BE FOLLOWED. PARAGRAPH "Crossings (5)

When it is not possible for the water line to cross above the sewer line, the water line passing under a sewer shall be protected by providing:

- (a) A vertical separation of at least 0.5 metres between the invert of the sewer and the crown of the water line.
- (b) Adequate structural support for the sewers to prevent excessive deflection of joints and settling.
- (c) That the length of water pipe shall be centred at the point of crossing so that the joints will be equidistant and as far as possible from the sewer.

c) SANITARY LATERAL IS 125 mm, GREEN DR 28 WITH ELASTOMERIC GASKET AS PER OPSS 1841 AND CSA B182.2 M1990. A 1975 AS BUILD SERVICE DRAWING INDICATES A 125 mm SERVICE. THE CONTRACTOR SHOULD DETERMINE IS THIS SERVICE IS FUNCTIONING AND IN GOOD CONDITION AND LOCATED TO ACCEPT THE PROPOSED M/H M/HSA1. WHEN REVEALED CONTRACTOR SHOULD ASK TOWN TO EXAMINE.

d) MANHOLE TO CONFORM TO OPSD 701.010 WITH SOLID COVER.

e) MANHOLE TO BE TESTED FOR LEAKS AS PER OPSS sect 407

f) BEDDING FOR NEW INSTALLATIONS WILL CONFORM TO OPSD 820 AND THE GRANULAR 'A' WILL CONFORM TO OPSS.

g) BRANCH CONNECTIONS ARE PRE-MANUFACTURED 'CSA' 'Y' FITTINGS. ALL JOINTS IN THE LATERAL WILL BE BELL AND SPIGOT TYPE.

h) A MINIMUM COVER OF 1.5 m WILL BE REQUIRED OVER THE FULL LENGTH OF THE LATERAL AND ITS BRANCHES.

2. a) WATER SERVICE MAIN IS 150 mm PRESSURE PVC DR18 BLUE PIPE FROM 200 mm MAIN IN THE STREET TO THE FRONT OF THE MAIN BUILDING WHERE IT WILL ENTER A METER VAULT INSIDE THE FRONT PROPERTY LINE. SEE SK20 & SK21.

b) A MAIN WATER SERVICE CUT-OFF VALVE IS TO BE INSTALLED ON THE PROPERTY LINE NEAR THE ROAD.

c) LATERAL IS TO BE CONNECTED TO THE 200 mm MAIN USING A "TEE" CONNECTION. THIS WILL REQUIRE A WATER SERVICE SHUTDOWN ON MAIN ST. BETWEEN BELLEVILLE AND MAPLE STREETS. THE CONTRACTOR MUST NOTIFY THE TOWN OFFICIALS AND THE AFFECTED RESIDENTS THREE DAYS IN ADVANCE.

d) THERE WILL BE A VALVE IN THE LATERAL INSIDE THE APPLICANT'S PROPERTY LINE WITH BOXES ADJUSTED TO FINISHED GRADE.

e) THE MINIMUM COVER OF THE WATER SERVICE LATERAL WILL BE 1.8 m

f) PRIOR IS TO PUTTING THE WATER SERVICE INTO USE, AN DISINFECTION PROCEDURE [PROVINCIAL STANDARD 2020 MUST BE FOLLOWED] AND A BACTERIAL TEST MUST BE PERFORMED AND THE LINE SHOWN TO BE FREE OF BACTERIA. A COPY OF THE TEST REPORT MUST BE PROVIDED TO THE COUNTY PRIOR TO THE LINE BEING PUT INTO SERVICE.

g) ALL WORK TO SERVICES IS TO BE CARRIED OUT IN ACCORDANCE WITH ALL APPLICABLE GUIDELINES AND SPECIFICATIONS OF THE COUNTY AND THIS DESIGN.

3. ELECTRICAL SERVICE FROM THE HYDRO POLE TO A TRANSFORMER PAD WHERE THE POWER IS REDUCED TO 600 amp 120/208 v, 3-PHASE. THIS POWER IS RUN TO THE ELECTRICAL VAULT IN THE FRONT YARD, TO BE LOCATED BY HYDRO ONE. FEED ENTERS THE MAIN BUILDING NEAR THE NORTH END OF THE WEST WALL. RUNNING INTO THE ELECTRICAL ROOM AT THE NORTH END OF THE BUILDING WHERE IT WILL BE METERED AGAIN AND SPLIT TO OTHER BUILDINGS ON THE PROPERTY. FEEDS WILL ALSO RUN TO FOUR OTHER BUILDINGS: THE 'CHALET SUITE', THE ANNEX, THE YOGA SUITE AND THE SEASON BUILDING.

4. CATCH BASIN GRATE TO BE ADJUSTED WITH MANUFACTURER'S COLLARS TO SAME ELEVATION AS FINISHED PAVEMENT. ALL CATCH BASIN GRATES TO BE PROTECTED FROM SEDIMENT INFILTRATION DURING CONSTRUCTION WITH GEOFABRIC. FABRIC TO HAVE AT LEAST 75 mm LAP ON UNDER SIDE OF GRATE TO MAINTAIN FULL COVERAGE OF THE GRATE. CATCH BASIN SUMP TO BE CLEANED PRIOR TO COVER AND AGAIN AFTER COVER IS REMOVED. COVER IS TO BE INSTALLED PRIOR TO CONSTRUCTION AND LEFT IN INSTALLED UNTIL VEGETATION IS RE-ESTABLISHED.

5. CONTRACTOR TO CONSULT WITH ARBORIST NOTES REGARDING THE CONSTRUCTION OF THE WOOD FENCE AND SWALES. FENCE MAY BE INTERRUPTED AT MATURE TREES. SWALES MAY BE CONSTRUCTED INSIDE THE TREES TO AVOID DAMAGE. OTHER CONFLICTS TO BE BROUGHT TO THE ATTENTION OF THE ENGINEER.

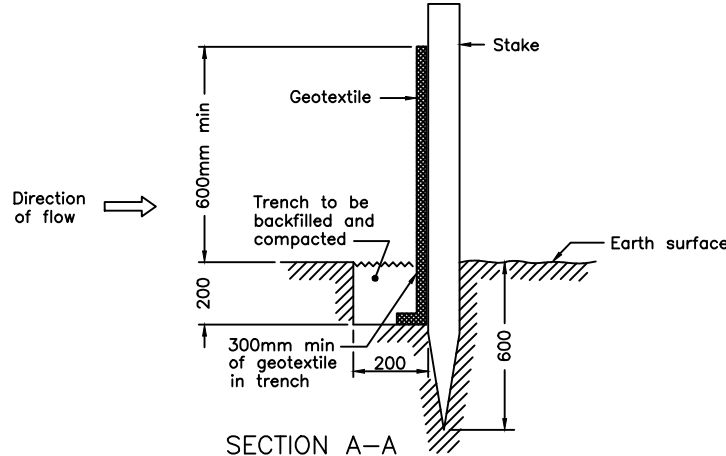
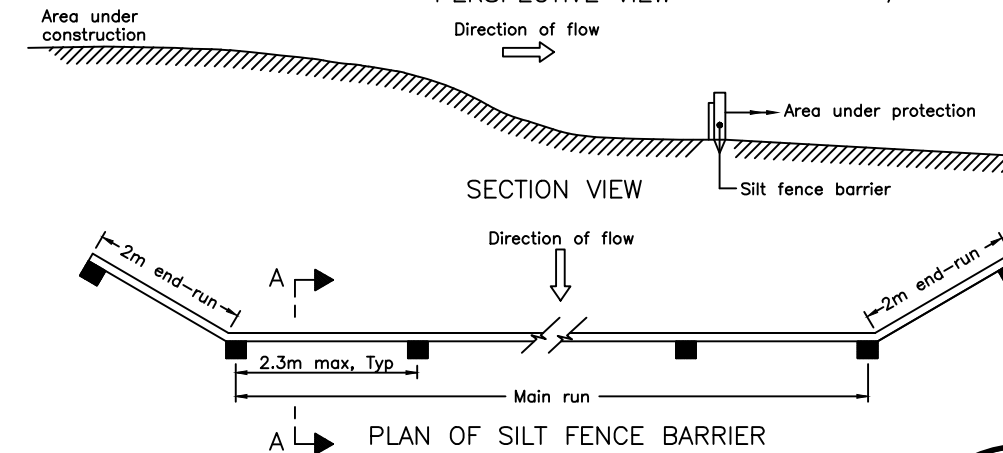
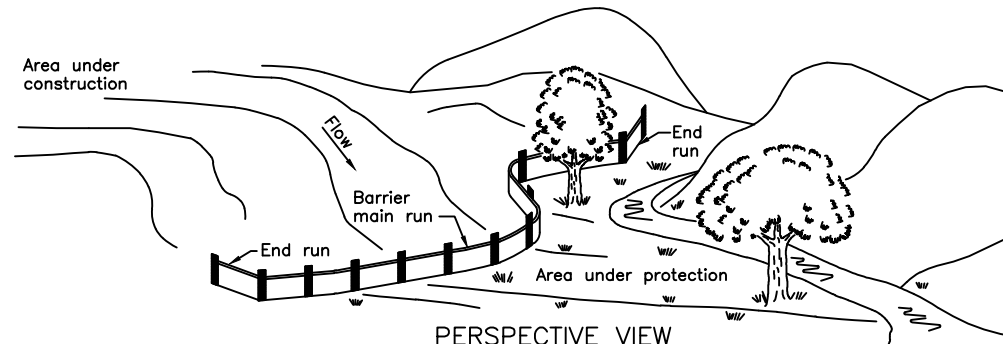
6. DRAWING INDICATES A WATER METER CHAMBER. BUT UNTIL THE TOWN PROVIDES THE 'STANDARD' FOR REVIEW, THE OWNER IS NOT PERMITTED TO GIVE A 'BLANK' APPROVAL FOR THE WATER METER CHAMBER. SHOULD THIS CHAMBER BE INSTALLED, THERE WILL BE TWO BACK FLOW PREVENTERS INSTALLED WITH THE METER.

8. WATER SERVICE LATERAL AND THE FIRE SERVICE LATERAL IS TO HAVE A 14 ga TW SOLID COPPER COATED WIRE ATTACHED TO THE TOP SIDE OF THE PIPE. AS PER OBC12 7.2.11.3.

9. CONTRACTOR TO REVIEW THE LANDSCAPING DRAWINGS. THE GRADING ALONG THE WEST AND NORTH PROPERTY LINES IS LIMITED TO MAINTAIN THE EXISTING 'SUITABLE' TREES. THE SUITABLE TREES ARE IDENTIFIED ON THE LANDSCAPING PLANS. INSIDE THE TREES [AND ROOT SYSTEM] GRADES MAY BE ACHIEVED AS PER THE STORMWATER PLAN. THE CONTRACTOR SHALL IDENTIFY ANY CONFLICTS WITH THE ENGINEER FOR RESOLUTION.

NOTES CONCERNING STORMWATER DESIGN

1. STORMWATER FROM THE DEVELOPMENT WILL BE CONTROLLED ON THE LOT.
2. CONTROL OUTLETS AT CATCH BASINS BY ORIFICE PLATE. ENSURE THE ORIFICE INVERTS ARE AT THE SAME ELEVATION AS THE PIPE INVERT ELEVATIONS. THE ORIFICE SIZE IS INDICATED ON THE DRAWING.
3. DURING CONSTRUCTION PRECAUTIONS ARE TO BE TAKEN TO MINIMIZE THE IMPACT OF SUSPENDED PARTICULATE FROM ENTERING THE TOWN STORM SYSTEM OR NEIGHBOURING PROPERTY BY INSTALLING A SILT FENCE AS INDICATED ON THE DRAWING [SILT FENCE TO COMPLY WITH OPSD 219.110]. GEOFABRIC IS TO BE PLACED AROUND EACH CATCH BASIN GRATES IMMEDIATELY AFTER PLACEMENT OF NEW UNITS AND IS TO BE INSTALLED AROUND NEAR CATCH BASINS - ONE AT THE SOUTH END OF THE DRIVEWAY AND THE FIRST ONE IN THE MUNICIPAL ROAD.
4. TEMPORARY MEASURES ARE TO BE TAKEN TO MAINTAIN THE QUALITY OF RUNOFF FROM RAIN FALL. BAILS OF STRAW ARE TO BE LAID ACROSS THE SWALE ON THE WEST SIDE OF THE ENTRY LOT AS INDICATED ON THE DRAWING.



NOTE:

A All dimensions are in millimetres or metres unless otherwise shown.

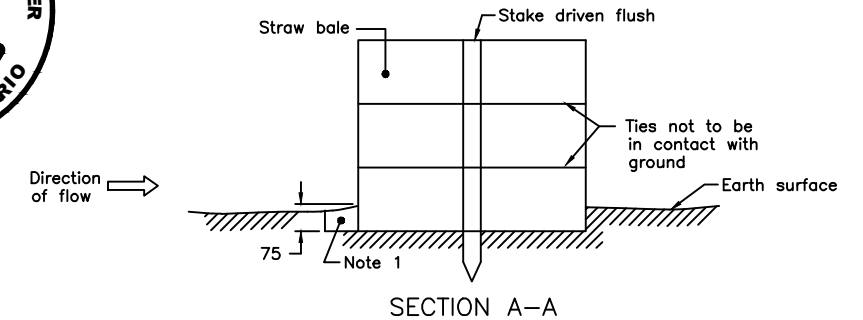
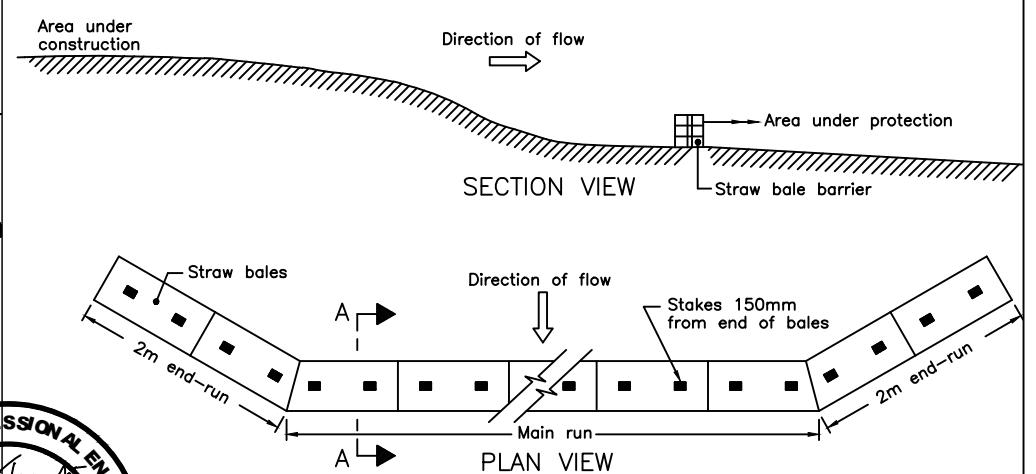
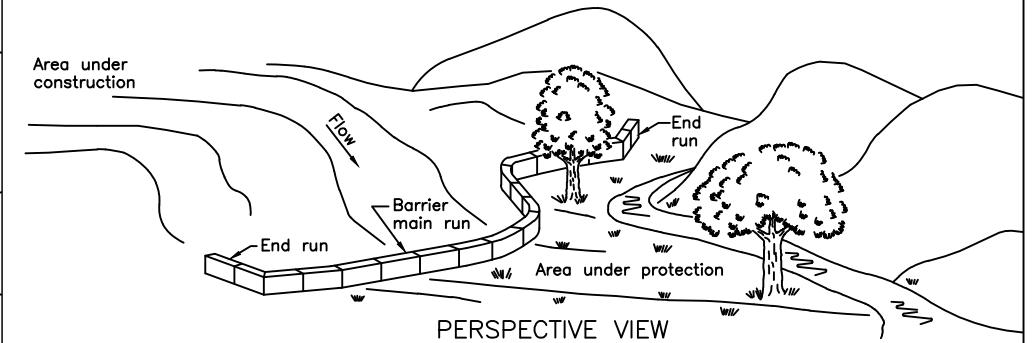
**LIGHT DUTY
SILT FENCE BARRIER
OPSD - 219.110**

NOTES CONCERNING STORMWATER DESIGN CONTINUED

5. THESE CONTROL STRUCTURES SHOULD BE INSTALLED PRIOR TO CONSTRUCTION, BE MAINTAINED DURING CONSTRUCTION AND BE LEFT IN PLACE UNTIL MATURE VEGETATION HAS BEEN ESTABLISHED. CONTINUE TO THE RIGHT.
6. THE CATCH BASINS TO BE PROTECTED INCLUDE ALL NEW ON SITE AND THE EXISTING MUNICIPAL CATCH BASINS THAT WILL COLLECT ON SITE RUNOFF.
7. THE GENERAL CONTRACTOR WILL BE RESPONSIBLE TO MAKE DAILY INSPECTIONS TO ENSURE THE CONTINUOUS OPERATION OF THE CONTROL DEVICES AS THEY WERE INTENDED. ULTIMATELY THE OWNER WILL BE RESPONSIBLE THAT ALL MEASURES ARE TAKEN.
8. REFER TO THE STORMWATER MANAGEMENT REPORT FOR INSTRUCTIONS ON THE PROPOSED CULTEC SYSTEM.
9. ORIFICES ARE TO BE INSTALLED IN OUTLETS FOR CATCH BASINS #2, #3, #4 AND #7; 48 mm, 45 mm, 50 mm AND 38 mm, RESPECTIVELY. INVERT OF ORIFICE IS COINCIDENT WITH THE INVERT OF THE PIPE.
10. ADDITION ROOF RUNOFF IS DRAINED TO THE GARDEN, USING DEFLECTOR PADS. THE RUNOFF FROM THE KITCHEN ROOF DRAINS THROUGH A DROP TO UNDERGROUND FEED TO THE TREE TO THE IMMEDIATE NORTH AND 150 mm BIG 'O' WITH EXCESS DIRECTED IN 150 PVC DR 26 PIPE TO CB#3.

NOTES REGARDING FROST PROTECTION

1. MAIN WATER AND SERVICE LATERALS ARE FROST PROTECTED WITH THE SPECIFIED FILL AS INDICATED ABOVE.
2. ON SITE WATER AND SANITARY MAY BE BURIED 600 mm BELOW FINISHED GRADE BUT MUST BE FROST PROTECTED WITH SM INSULATION AS SHOWN IN DETAIL ON '3/D1.3'.



NOTES:

- 1 Balance of excavated trench to be backfilled following bale placement.
- A All dimensions are in millimetres or metres unless otherwise shown.

**LIGHT DUTY
STRAW BALE BARRIER
OPSD - 219.100**

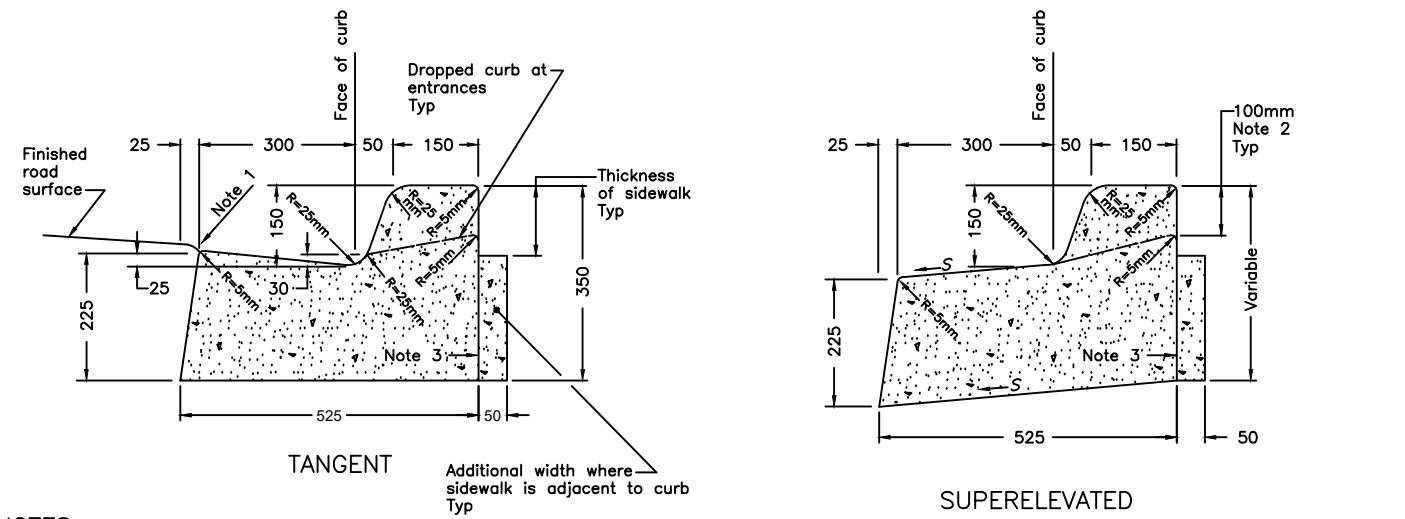
NOTES CONCERNING DECOMMISSIONING SERVICE LATERALS

1. ALL INADEQUATE SERVICE LATERALS [WATER OR SANITARY] MUST BE PROPERLY CUT AND CAPPED TO THE SATISFACTION OF THE TOWN.
2. TOWN MUST APPROVE THE DECOMMISSIONED LATERALS PRIOR TO BACKFILLING.



HAMBLY GROUP		WELLINGTON HOTEL	
DIVISION OF 8436550 CANADA CORPORATION			
SITE PLAN - SITE NOTES			
192 Main Street, Wellington, Ontario			
SIZE	FSCM NO.	DWG NO. D1.1	REV
SCALE NTS	2021-11-22		SHEET 1

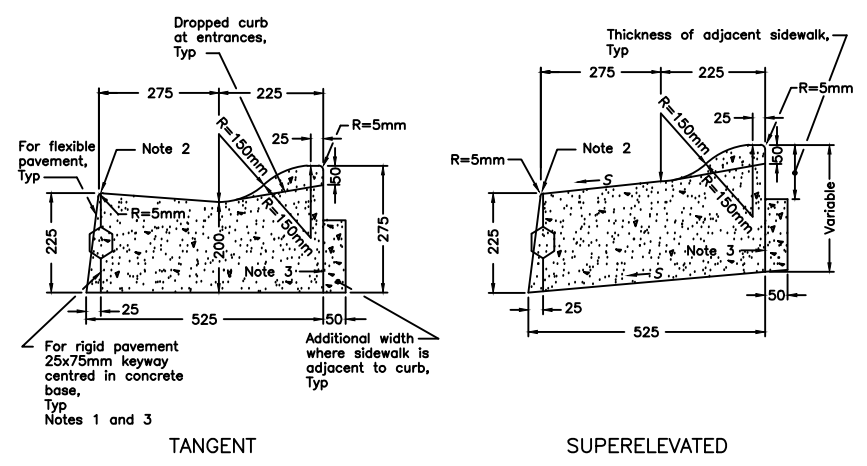
1104 Cedarwoods Dr.,
Verona,
ONTARIO
N0Y 2W0
TEL 613 374 1746
CELL 613 536 8193
FAX 613 536 9118



NOTES:
 1 Flexible pavement shall be 5mm above the adjacent edge of gutter.
 2 Where sidewalk is continuously adjacent, reduce the dropped curb at entrances to 75mm.
 3 For slipforming procedure, a 5% batter is acceptable.
 A Treatment at entrances shall conform with OPSD-351.010.
 B Outlet treatment shall conform with OPSD-610 Series.
 C The length of transition from one curb type to another shall be 3.0m, except in conjunction with guide rail, it shall conform to OPSD-900 Series.
 D All dimensions are in millimetres unless otherwise shown.

LEGEND:
 S - Rate of pavement superelevation in percent, %.

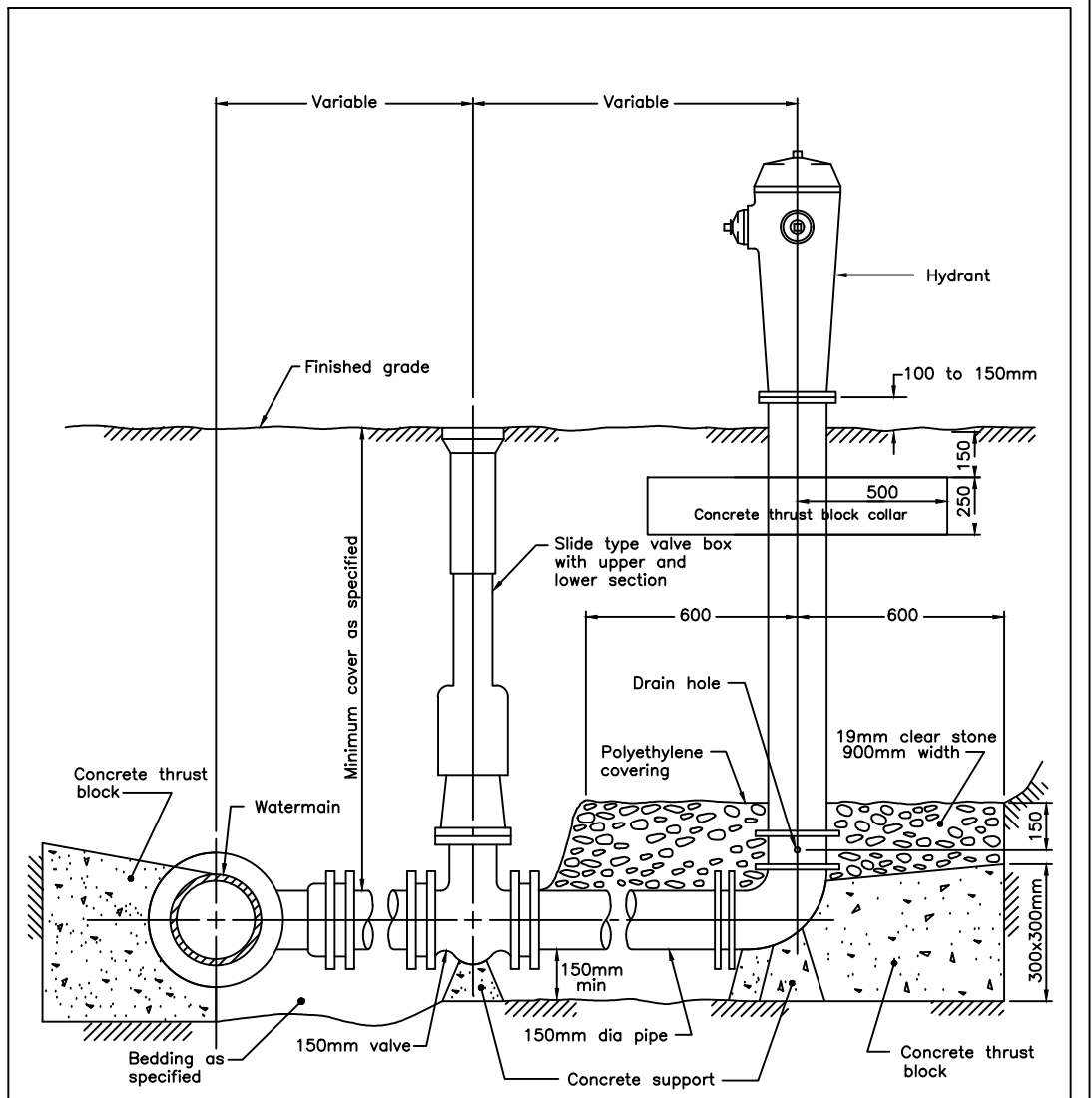
ONTARIO PROVINCIAL STANDARD DRAWING		April 1999	Rev	
CONCRETE BARRIER CURB WITH STANDARD GUTTER FOR FLEXIBLE PAVEMENT		OPSD - 600.040		



NOTES:
 1 When curb and gutter is adjacent to concrete pavement or base, this drawing is to be used in conjunction with OPSD-552.010 and 552.020.
 2 Flexible and composite pavement shall be placed 5mm above the adjacent edge of gutter.
 3 For slipforming procedure, a 5% batter is acceptable.
 A Treatment at entrances shall conform with OPSD-351.010.
 B Outlet treatment shall conform with OPSD-610 Series.
 C The length of transition from one curb type to another shall be 3.0m, except in conjunction with guide rail, it shall conform to OPSD-900 Series.
 D All dimensions are in millimetres unless otherwise shown.

LEGEND:
 S - Rate of pavement superelevation in percent, %.

ONTARIO PROVINCIAL STANDARD DRAWING		April 1999	Rev	
CONCRETE SEMI-MOUNTABLE CURB WITH STANDARD GUTTER		OPSD - 600.060		

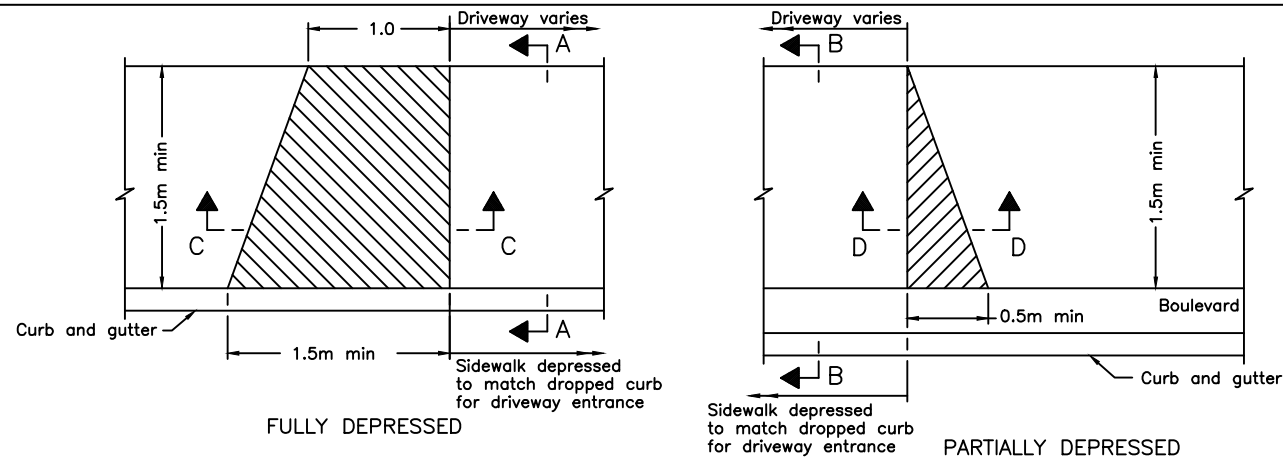


NOTES:
 A All concrete thrust blocks to be poured against undisturbed ground.
 B Bond breaker to be used between the concrete and the fittings and appurtenances.
 C Bolts and nuts for buried flange to flange connections are to be stainless steel.
 D Flange of standpipe extensions not to be in frost zone.
 E All dimensions are in millimetres unless otherwise shown.

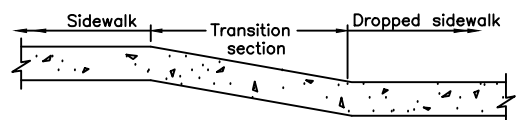
ONTARIO PROVINCIAL STANDARD DRAWING		April 1999	Rev	
HYDRANT INSTALLATION		OPSD - 1105.010		



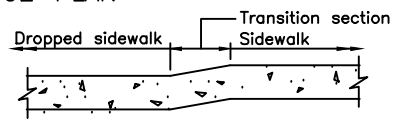
HAMBLY GROUP DIVISION OF 8436550 CANADA CORPORATION		WELLINGTON HOTEL		
1104 Cedarwoods Dr., Verona, ONTARIO N0H 2W0		SITE PLAN - SITE NOTES 192 Main Street, Wellington, Ontario		
TEL 613 374 1746 CELL 613 536 8193 FAX 613 536 9118	SIZE	FSCM NO.	DWG NO. D1.2	REV
SCALE NTS	2021-11-22		SHEET 1	



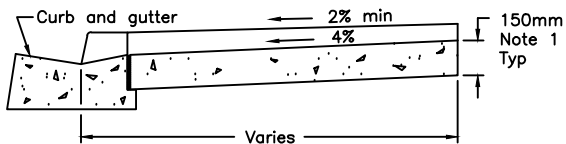
SIDEWALK AT DRIVEWAY ENTRANCE—PLAN



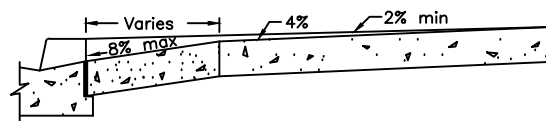
SIDEWALK WITHOUT BOULEVARD SECTION C-C



SIDEWALK WITH BOULEVARD SECTION D-D



SECTION A-A



SECTION B-B

NOTES:

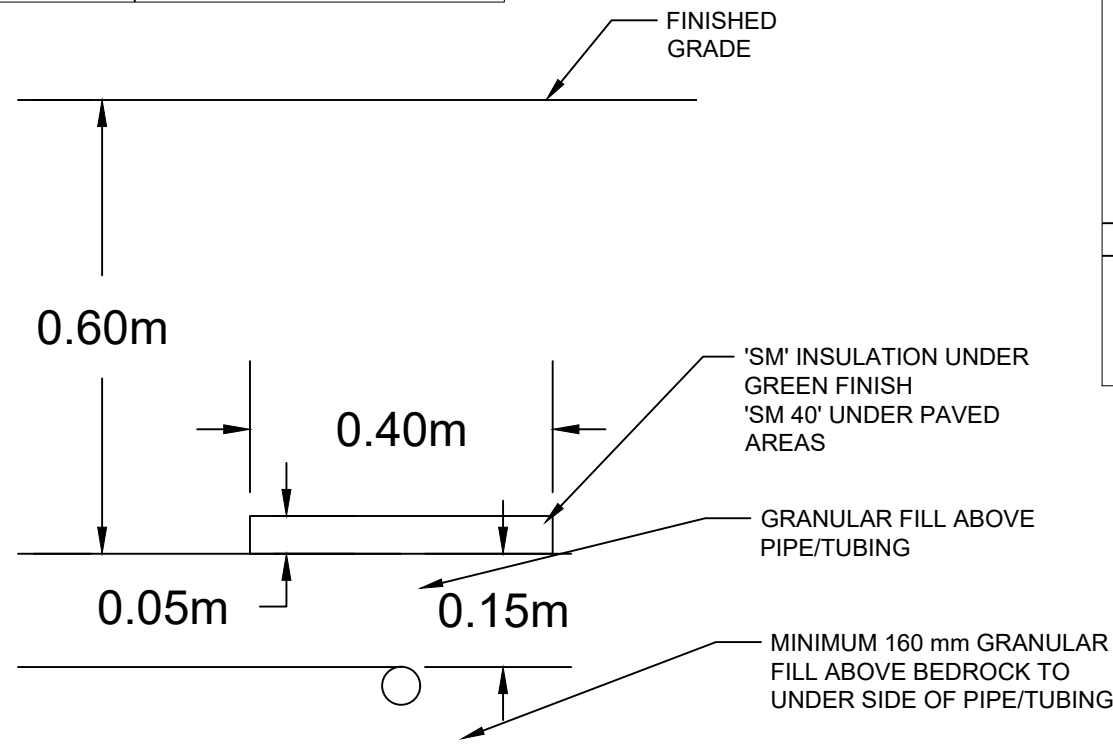
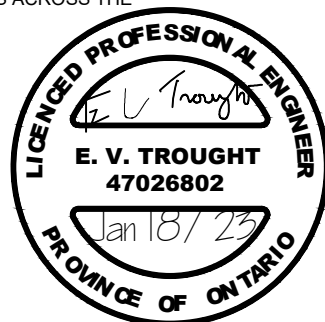
- 1 At commercial and industrial driveways the thickness shall be 200mm.
- A All dimensions are in millimetres or metres unless otherwise shown.

ONTARIO PROVINCIAL STANDARD DRAWING		1993 10 01	Rev	
SIDEWALK DRIVEWAY ENTRANCE DETAILS		Date		
		OPSD - 310.050		

1 OPSD 310.050
D1.3 NTS

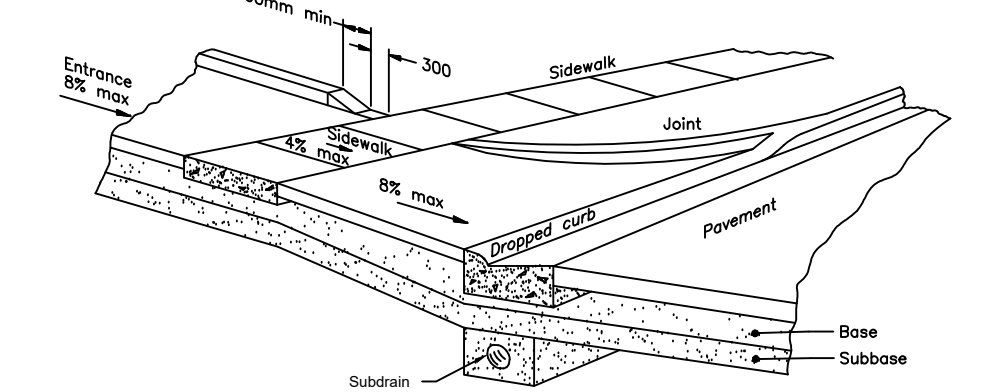
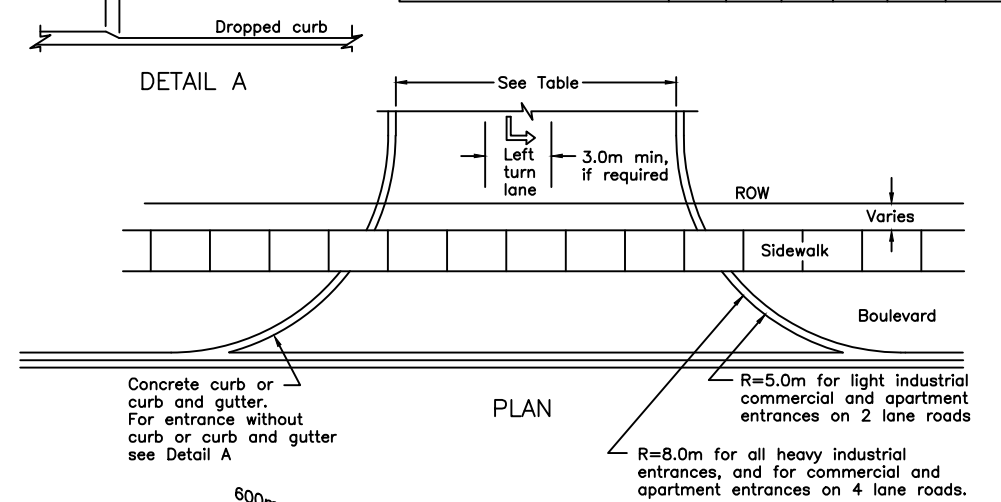
NOTES CONCERNING SITE ENTRY

- MUNICIPAL CURB DESIGN [OPSD 600.040] IS TO BE CONSTRUCTED AT THE ENTRANCE AND INTO THE SUBJECT PROPERTY ON THE EAST SIDE WHERE IT WILL CONVERT TO BARRIER CURB/RETAINING WALL. THIS IS GRADE DEPENDANT. REFER TO SP2.9 FOR DETAILS. ON THE WEST SIDE OF THE ENTRY, THE OPSD BARRIER CURB WILL TERMINATE 1.5 m INTO THE SUBJECT PROPERTY.
- FOLLOW OPSD ENTRY DESIGNS 310.050 AND 350.010 FOR TRANSITION AT MUNICIPAL SIDEWALK.
- SIDEWALK IS 200 mm THICK ACROSS THE DRIVEWAY. OTHER SIDEWALKS ON THE PROPERTY WILL BE CONSTRUCTED 150 mm THICK, WITH JOINTS IN COMPLIANCE WITH OPSD 310.010.
- MOUNTABLE OPSD CURB 600.060 IS USED ACROSS THE ENTRANCE, PARALLEL TO THE STREET. THE MOUNTABLE TRANSITION CURB WILL BE USED ON THE EAST SIDE OF THE ENTRY THAT IS NEAR THE NEIGHBOURING COMMERCIAL ENTRANCE.
- TRANSITIONS ARE USED TO TERMINATE THE CURBS ACROSS THE SIDEWALK. SEE DRAWING ON 'D1.4'



3 FROST PROTECTION
D1.3 NTS

LAND USE	DRIVEWAY DIMENSIONS				RADIUS	
	WIDTH m				m	
	One-Way		Two-Way		min	max
Light Industrial	4.5	7.5	7.2	12.0	4.5	12.0
Commercial and Apartment	4.5	7.5	7.2	12.0	4.5	12.0
Heavy Industrial	5.0	9.0	9.0	15.0	6.0	15.0



NOTES:

- A All dimensions are in millimetres unless otherwise shown.

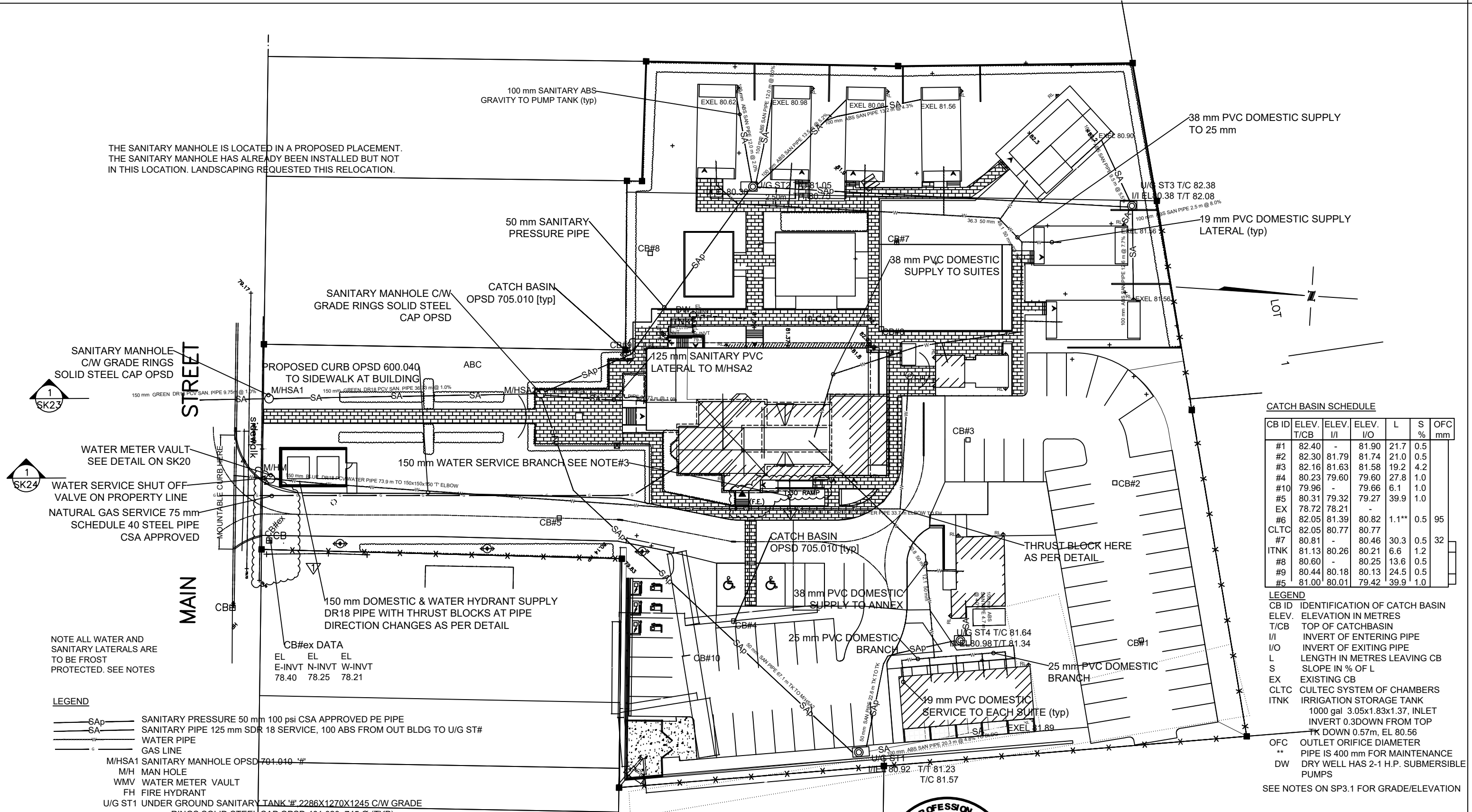
ONTARIO PROVINCIAL STANDARD DRAWING		April 1999	Rev	
URBAN INDUSTRIAL, COMMERCIAL AND APARTMENT ENTRANCES		Date		
		OPSD - 350.010		

2 OPSD 350.010
D1.3 NTS

HAMBLY GROUP
DIVISION OF
8436550 CANADA CORPORATION
1104 Cedarwoods Dr.,
Verona,
ONTARIO
K0H 2W0
TEL 613 374 1746
CELL 613 536 8193
FAX 613 536 9118

WELLINGTON HOTEL			
SITE PLAN - SITE NOTES & DETAILS			
192 Main Street, Wellington, Ontario			
SIZE	FSCM NO.	DWG NO.	REV
		D1.3	
SCALE NTS	2021-11-22	SHEET 1	

THE SANITARY MANHOLE IS LOCATED IN A PROPOSED PLACEMENT. THE SANITARY MANHOLE HAS ALREADY BEEN INSTALLED BUT NOT IN THIS LOCATION. LANDSCAPING REQUESTED THIS RELOCATION.



CATCH BASIN SCHEDULE

CB ID	ELEV. T/CB	ELEV. I/I	ELEV. I/O	L	S	OFC mm
#1	82.40	-	81.90	21.7	0.5	
#2	82.30	81.79	81.74	21.0	0.5	
#3	82.16	81.63	81.58	19.2	4.2	
#4	80.23	79.60	79.60	27.8	1.0	
#10	79.96	-	79.66	6.1	1.0	
#5	80.31	79.32	79.27	39.9	1.0	
EX	78.72	78.21	-	-	-	
#6	82.05	81.39	80.82	1.1**	0.5	95
CLTC	82.05	80.77	80.77	-	-	
#7	80.81	-	80.46	30.3	0.5	32
ITNK	81.13	80.26	80.21	6.6	1.2	
#8	80.60	-	80.25	13.6	0.5	
#9	80.44	80.18	80.13	24.5	0.5	
#5	81.00	80.01	79.42	39.9	1.0	

LEGEND

CB ID IDENTIFICATION OF CATCH BASIN
 ELEV. ELEVATION IN METRES
 T/CB TOP OF CATCHBASIN
 I/I INVERT OF ENTERING PIPE
 I/O INVERT OF EXITING PIPE
 L LENGTH IN METRES LEAVING CB
 S SLOPE IN % OF L
 EX EXISTING CB
 CLTC CULTEC SYSTEM OF CHAMBERS
 ITNK IRRIGATION STORAGE TANK
 1000 gal 3.05x1.83x1.37, INLET
 INVERT 0.3DOWN FROM TOP
 TK DOWN 0.57m, EL 80.56
 OFC OUTLET ORIFICE DIAMETER
 ** PIPE IS 400 mm FOR MAINTENANCE
 DW DRY WELL HAS 2-1 H.P. SUBMERSIBLE PUMPS

SEE NOTES ON SP3.1 FOR GRADE/ELEVATION

1 SK23
 1 SK24

WATER METER VAULT SEE DETAIL ON SK20
 WATER SERVICE SHUT OFF VALVE ON PROPERTY LINE
 NATURAL GAS SERVICE 75 mm SCHEDULE 40 STEEL PIPE CSA APPROVED

NOTE ALL WATER AND SANITARY LATERALS ARE TO BE FROST PROTECTED. SEE NOTES

LEGEND

SAP SANITARY PRESSURE 50 mm 100 psi CSA APPROVED PE PIPE
 SA SANITARY PIPE 125 mm SDR 18 SERVICE, 100 ABS FROM OUT BLDG TO U/G ST#
 W WATER PIPE
 G GAS LINE

M/HSA1 SANITARY MANHOLE OPSD 704.010 #1
 M/H MAN HOLE
 WMV WATER METER VAULT
 FH FIRE HYDRANT
 U/G ST1 UNDER GROUND SANITARY TANK # 2286X1270X1245 C/W GRADE RINGS SOLID STEEL CAP OPSD 401.020, 745 Ø (TYP)

TK TANK
 EXEL ELEVATION OF SANITARY INVERT AT BUILDING EXTERIOR FOUNDATION WALL
 I/IEL SANITARY INLET INVERT ELEVATION
 T/T TOP OF SANITARY TANK ELEVATION
 T/C TOP OF COLLAR FOR SANITARY TANK
 M/HM MANHOLE WATER METER VAULT

NOTE CONCERNING THE SEPARATION OF SEWER AND WATER LINES

- KEEP THE LINE SEPARATED BY 2.5 m.
- CROSSINGS ARE COVERED ON DRAWING SHEET "D1.1 1 b)"
- 150 mm WATER SERVICE BRANCH PRESSURE PVC PIPE DR18 CSA APPROVED. IN BUILDING SPLITS WITH A "Y" TO 100 mm DOMESTIC AND 100 mm TO SPRINKLER SYSTEM SEE DETAIL SK22

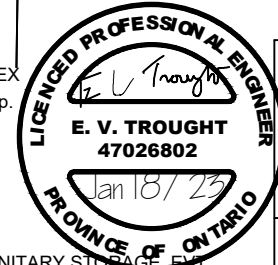
CB#ex DATA

EL	EL	EL
E-INVT	N-INVT	W-INVT
78.40	78.25	78.21

SAN. SERVICE TO BLDG

ELE. INVERT EXIT BLDG	78.20
ELE. INVERT ENTRY M/HSA2	77.78
ELE. INVERT EXIT M/HSA2	77.73
ELE. INVERT ENTRY M/HSA1	77.36
ELE. INVERT EXIT M/HSA1	77.31
ELE. INVERT @ MAIN CONNECTION	77.21

U/G ST1 IS EQUIPPED WITH 2-DUPLEX CONTROLLED SEWAGE PUMPS (1/2 h.p. 'LITTLE GIANT' WSV52HAM). EACH PUMP WITH A BACKFLOW PREVENTER.



HAMBLY GROUP
 DIVISION OF
 8436550 CANADA CORPORATION

1104 Cedarwoods Dr.,
 Verona,
 ONTARIO
 N0H 2W0

TEL 613 374 1746
 CELL 613 536 8193
 FAX 613 536 9118

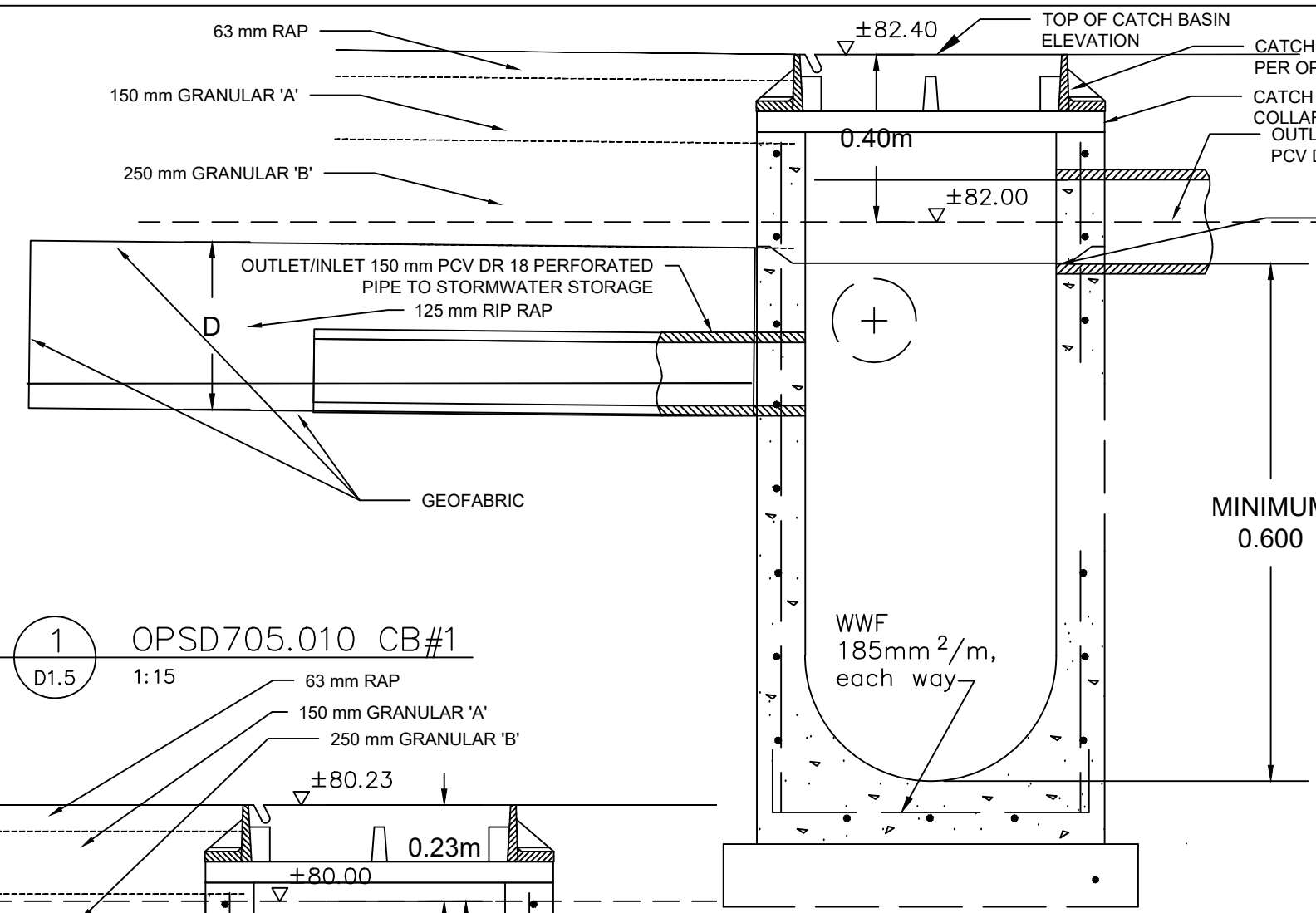
WELLINGTON HOTEL

SITE PLAN - SERVICES

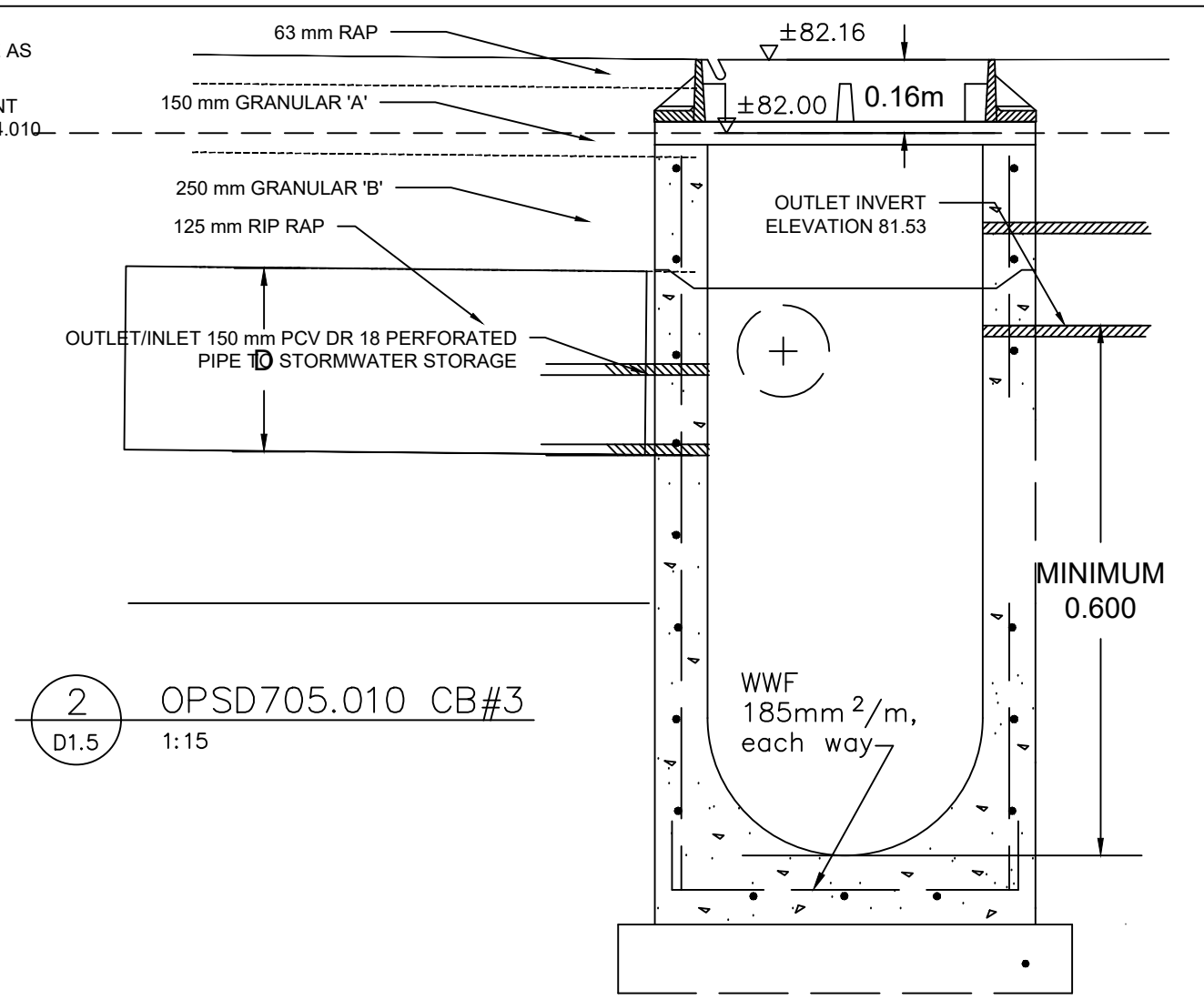
192 Main Street, Wellington, Ontario

SIZE	FSCM NO.	DWG NO.	REV
		SP3	

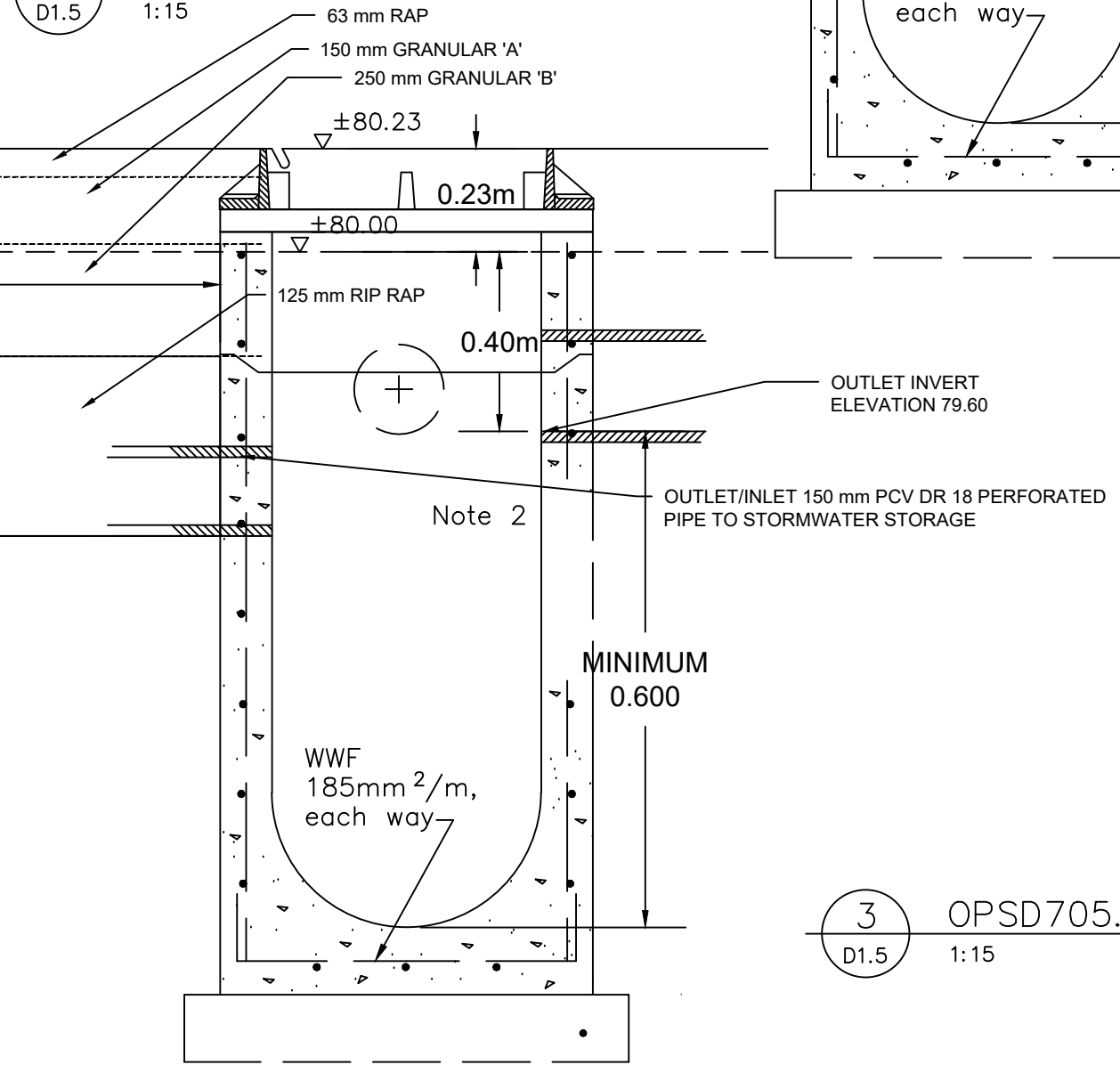
SCALE 1:500 2021-11-22 SHEET 1



1 OPSD705.010 CB#1
D1.5 1:15



2 OPSD705.010 CB#3
D1.5 1:15



3 OPSD705.010 CB#4
D1.5 1:15



HAMBLY GROUP		WELLINGTON HOTEL	
DIVISION OF 8436550 CANADA CORPORATION		SITE PLAN - SITE NOTES & DETAILS	
1104 Cedarwoods Dr., Verona, ONTARIO K0H 2W0		192 Main Street, Wellington, Ontario	
TEL 613 374 1746 CELL 613 536 8193 FAX 613 536 9118	SIZE FSCM NO.	DWG NO. D1.5	REV
SCALE NTS	2021-11-22	SHEET 1	