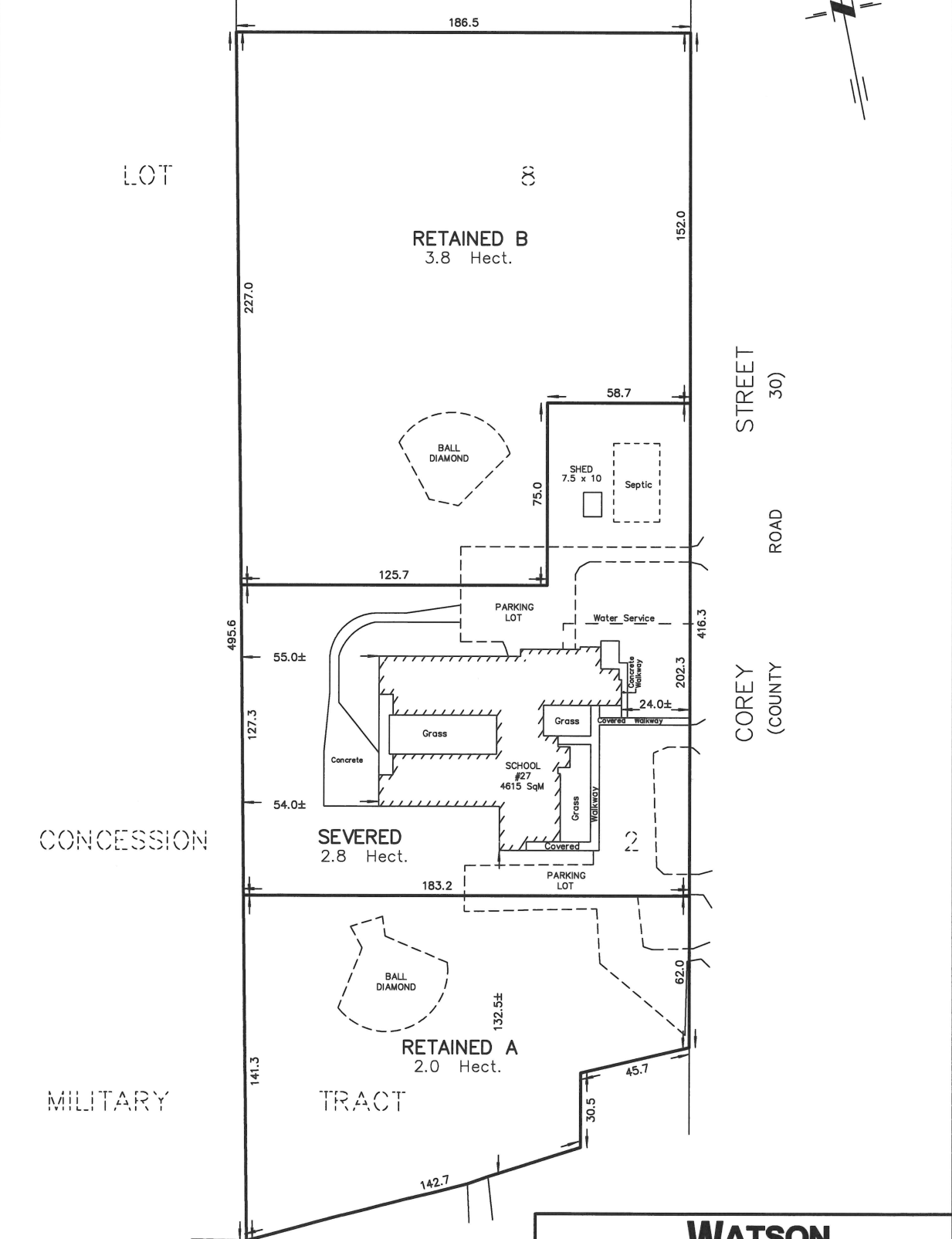


PLAN OF SURVEY
 PART OF LOT 8
 CONCESSION 2, MILITARY TRACT
 TOWNSHIP OF HALLOWELL
 NOW IN THE MUNICIPALITY OF
 THE COUNTY OF PRINCE EDWARD
 METRIC SCALE 1 : 1500



METRIC :
 DISTANCES AND COORDINATES SHOWN ON THIS PLAN ARE IN METRES AND CAN BE CONVERTED TO FEET BY DIVIDING BY 0.3048.

218 CHURCH STREET BELLEVILLE, ONTARIO	WATSON LAND SURVEYORS Ltd.	K8N - 3C3 (613) 962 - 9521
MAY 19, 2023		PROJECT N ^o 12615-L-20