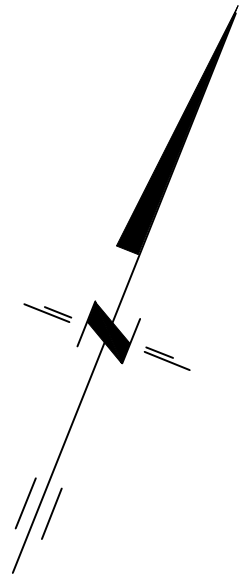
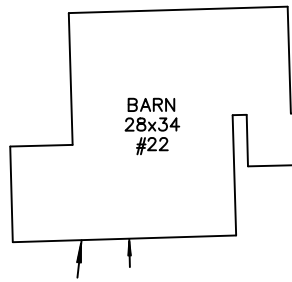
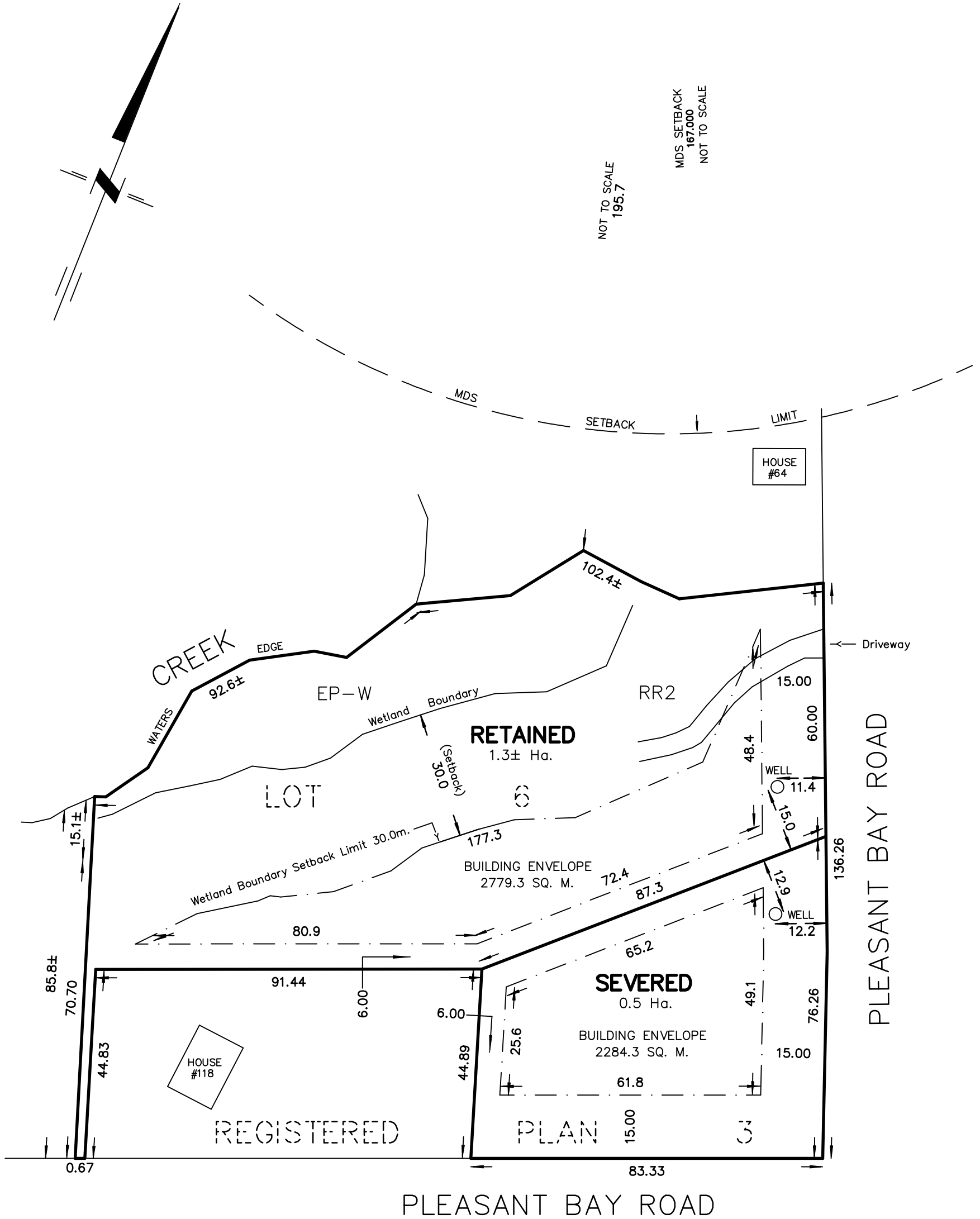


SKETCH
 PART OF LOT 6
 REGISTERED PLAN 3
 TOWNSHIP OF HILLIER
 NOW IN THE MUNICIPALITY OF
 THE COUNTY OF PRINCE EDWARD
 METRIC SCALE 1 : 1000



NOT TO SCALE
195.7

MDS SETBACK
167,000
NOT TO SCALE



NOTES :

SETBACKS ARE DERIVED FROM RR2 ZONING PEC
 MDS - MINIMUM DISTANCE SEPARATION
 WETLAND BOUNDARY SET BY CAMBIUM INC., MARCH 2023.

METRIC :

DISTANCES AND COORDINATES SHOWN ON THIS PLAN ARE IN METRES AND CAN BE CONVERTED TO FEET BY DIVIDING BY 0.3048.

218 CHURCH STREET
 BELLEVILLE, ONTARIO

WATSON
 LAND SURVEYORS Ltd.

K8N - 3C3
 (613) 962 - 9521

MARCH 13, 2023

PROJECT No 13169-B-21