

TREE PRESERVATION LEGEND

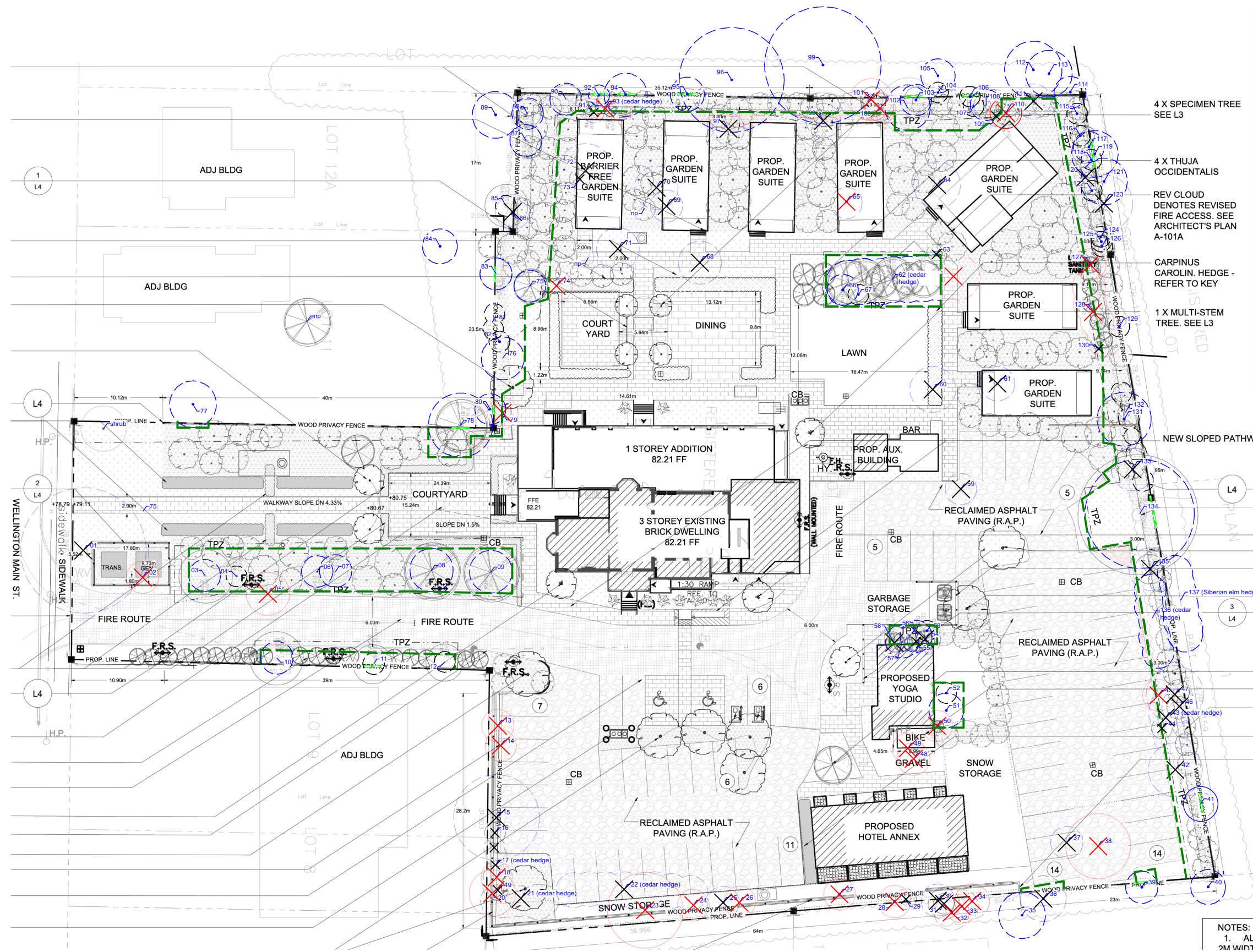
- Existing tree added by arborist
- Minimum Tree Protection Zone
- Tree Protection Zone recommended (undersized tree)
- ✗ Tree Removal (construction)
- ✗ Tree Removal (poor condition)
- ✗ Tree Removal (undersized tree)
- Tree Injury / Root Pruning required
- Tree Protection Fencing
- Proposed Gap in Perimeter Fence

GENERAL NOTES

1. This plan is to be read in conjunction with the arborist report prepared by Cohen & Master Tree and Shrub Services dated Oct. 26, 2023.
2. Cohen & Master Tree and Shrub Services provided the tree numbers, tree protection comments, icons for additional trees not shown on the survey (see legend, location approximate). All other information was provided on a landscape plan prepared by Victoria Taylor Architect dated Oct. 10, 2023 and a survey prepared by Watson Surveyors dated May 13, 2022.

TREE PROTECTION GENERAL NOTES

1. Tree protection zone radius is to be measured from the outside edge of the base of the trunk.
2. The site supervisor is responsible for ensuring tree protection fencing is maintained as shown on this plan.
3. No access, re-grading or storage of material is permitted inside tree protection barriers.



NOTES:
1. ALL
2M WIDTH



42 Guardsman Road
Thornhill, ON L3T 6L4
416-932-0622
info@cmtrees.com

CMTREES.COM BE GOOD TO YOUR TREES.

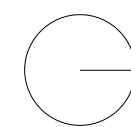
No.	Date
2.	2023.10.26
1.	2022.06.23

SITE
WELLINGTON HOTEL, 192 MAIN ST., WELLINGTON

SCALE 1:500

APPLICATION #:
SP-11-12

APPLICANT NAME: THE WELLINGTON IG INC.



TITLE
TREE PRESERVATION PLAN

SHEET 1/3

TPP-1

TREE PROTECTION NOTES (TPN)

TPN1. ROOT PRUNING

1.1 It is recommended that work within the Tree Protection Zones (TPZ) of protected trees (red hatch) be completed by hand, air spade or hydrovac under arborist supervision and roots cleanly pruned.

1.2 Where this is not possible, it is recommended that excavation be completed under arborist supervision and roots pruned concurrently with excavation to minimize tearing during construction, which can lead to tree decline.

1.3 If large roots are encountered (typically those with a diameter greater than 5cm), it is recommended that roots be assessed by an arborist prior to pruning to determine impacts on stability and long-term health of the tree.

TPN2. VEGETATION ENHANCEMENT

2.1 It is strongly recommended that injured trees be thoroughly watered once per week, from spring to fall, for two years after completion of the work on the site below their drip lines.

2.2 A layer of mulch should be placed below the drip line of these trees, 7-10cm deep and at least 10 centimeters away from the trunks.

TPN3. FENCE CONSTRUCTION AROUND TREES

3.1 See TPF-1 for recommendations on post placement.

3.2 The tree protection barrier must be removed to allow for installation of the perimeter fence. Prior to removal of the tree protection fence, the project landscape architect and/or the municipality must be contacted for authorization to remove the barrier.

3.3 The gaps shown in the perimeter fence on the Tree Protection Plan are intended to accommodate the existing tree trunks of the following trees: 11, 39, 41, 78, 80, 83, 92, 94, 95, 103, 106, 117, 118, 119, 134.

3.4 These locations are approximate and will need to be determined on a tree by tree basis on site (e.g. due to the lean or shape of the stem). The gap in the fence must be at least 30 cm from the face of the trunk to allow for movement and growth. The fence may need to be modified in time as the trees grow.

3.5 Fence post locations will need to be field fit based on root exploratory investigations when inside of Tree Protection Zones. For example, the standard 8ft. post spacing may need to be adjusted. The smaller diameter the posts and fewer in number, the less impact to trees. Some fence panels may need to be supported by a footing on grade, have the post located in the middle rather than at the end of the panel, or cantilevered.

3.6 Low branches from trees may require pruning to accommodate the fence. Pruning is to be carried out using proper arboricultural methods. It is recommended that pruning be carried out by a qualified arborist.

Tree Inventory - Construction-Related Removals (abridged)

Tree #	Species	DBH (cm)	Overall Rating	Action
2	<i>Acer platanoides</i> (Norway maple)	15, 10.5, 8.5	G	Remove due to proposed generator
5	<i>Carya ovata</i> (shagbark hickory)	39.5	G	Remove due to proposed driveway
13	<i>Aesculus hippocastanum</i> (horsechestnut)	40	F	Remove due to proposed parking
14	<i>Acer saccharum</i> (sugar maple)	19.5	F	Remove due to proposed parking
18	<i>Juglans nigra</i> (black walnut)	13.5	G	Remove due to garbage storage
20	<i>Populus deltoides</i> (cottonwood)	39, 33.5	F	Remove due to garbage storage
23	<i>Juglans nigra</i> (black walnut)	70, 21	F	Remove due to proposed parking
24	<i>Juglans nigra</i> (black walnut)	21	F	Remove due to proposed parking and
26	<i>Juglans nigra</i> (black walnut)	18	F	Remove due to proposed parking and
27	<i>Juglans nigra</i> (black walnut)	19	F	Remove due to proposed retaining wall
28	<i>Acer saccharum</i> (sugar maple)	11	F	Remove due to proposed retaining wall
32	<i>Juglans nigra</i> (black walnut)	20-29	F	Remove due to proposed retaining wall
33	<i>Juglans nigra</i> (black walnut)	10-20	F	Remove due to proposed retaining wall
34	<i>Juglans nigra</i> (black walnut)	20-29	F	Remove due to proposed retaining wall
38	<i>Acer saccharum</i> (sugar maple)	59.5	P	Remove due to proposed parking
45	<i>Juglans nigra</i> (black walnut)	21	F	Remove due to proposed parking
48	<i>Juglans nigra</i> (black walnut)	16.5, 13	G	Remove due to proposed bike storage
49	<i>Juglans nigra</i> (black walnut)	12.5	G	Remove due to proposed bike storage

Tree #	Species	DBH (cm)	Overall Rating	Action
50	<i>Thuja occidentalis</i> (eastern white cedar)	12	F	Remove due to proposed bike storage
62	<i>Thuja occidentalis</i> (eastern white cedar)	8x (19-37cm)	F	Remove (partial) due to proposed suite
65	<i>Quercus rubra</i> (red oak)	17.5	G	Remove due to proposed suite
74	<i>Quercus rubra</i> (red oak)	21	G	Remove due to proposed courtyard
79	<i>Juglans nigra</i> (black walnut)	11	F	Remove due to proposed walkway
93	<i>Thuja occidentalis</i> (eastern white cedar)	4x (5-13)	F	Remove due to proposed suite
100	<i>Acer platanoides</i> (Norway maple)	22	G	Remove due to proposed suite
101	<i>Acer negundo</i> (Manitoba maple)	30.5	P	Remove due to proposed fence
110	<i>Populus deltoides</i> (cottonwood)	19	F	Remove due to proposed suite
127	<i>Pinus strobus</i> (white pine)	21	F	Remove due to proposed suite
128	<i>Thuja occidentalis</i> (eastern white cedar)	4x (10-20)	F	Remove 4 trees due to proposed suite

The complete (unabridged) tree inventory table is found in Appendix II of the Arborist Report.

In addition to above, Trees 1, 15, 22, 25, 30, 36, 37, 42, 46, 47, 54, 58-61, 64, 68-72, 86, 97, 98, 111, 123, 133, 135 will need to be removed due to poor condition.

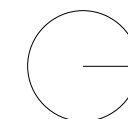


42 Guardsman Road
Thornhill, ON L3T 6L4
416-932-0622
info@cmtrees.com

CMTREES.COM BE GOOD TO YOUR TREES.

2.	2023.10.26
1.	2022.06.23
No.	Date

SITE
WELLINGTON HOTEL, 192 MAIN ST.,
WELLINGTON

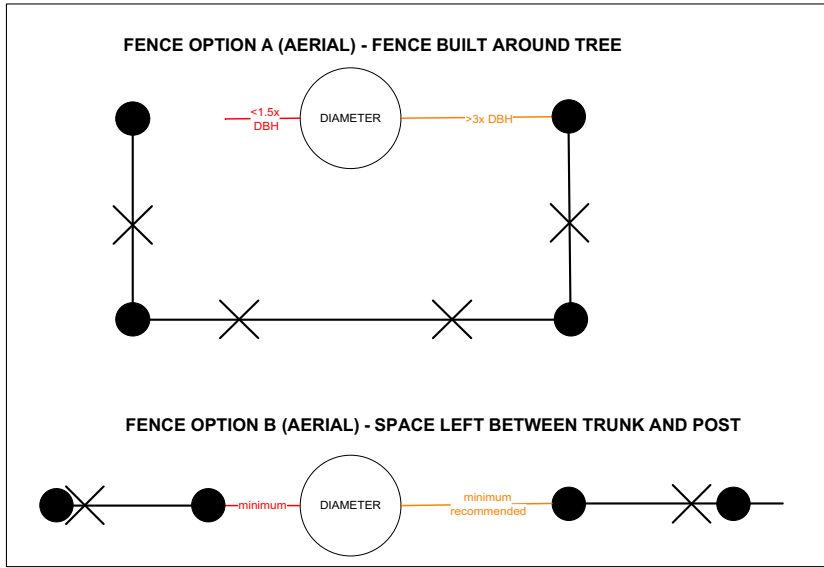
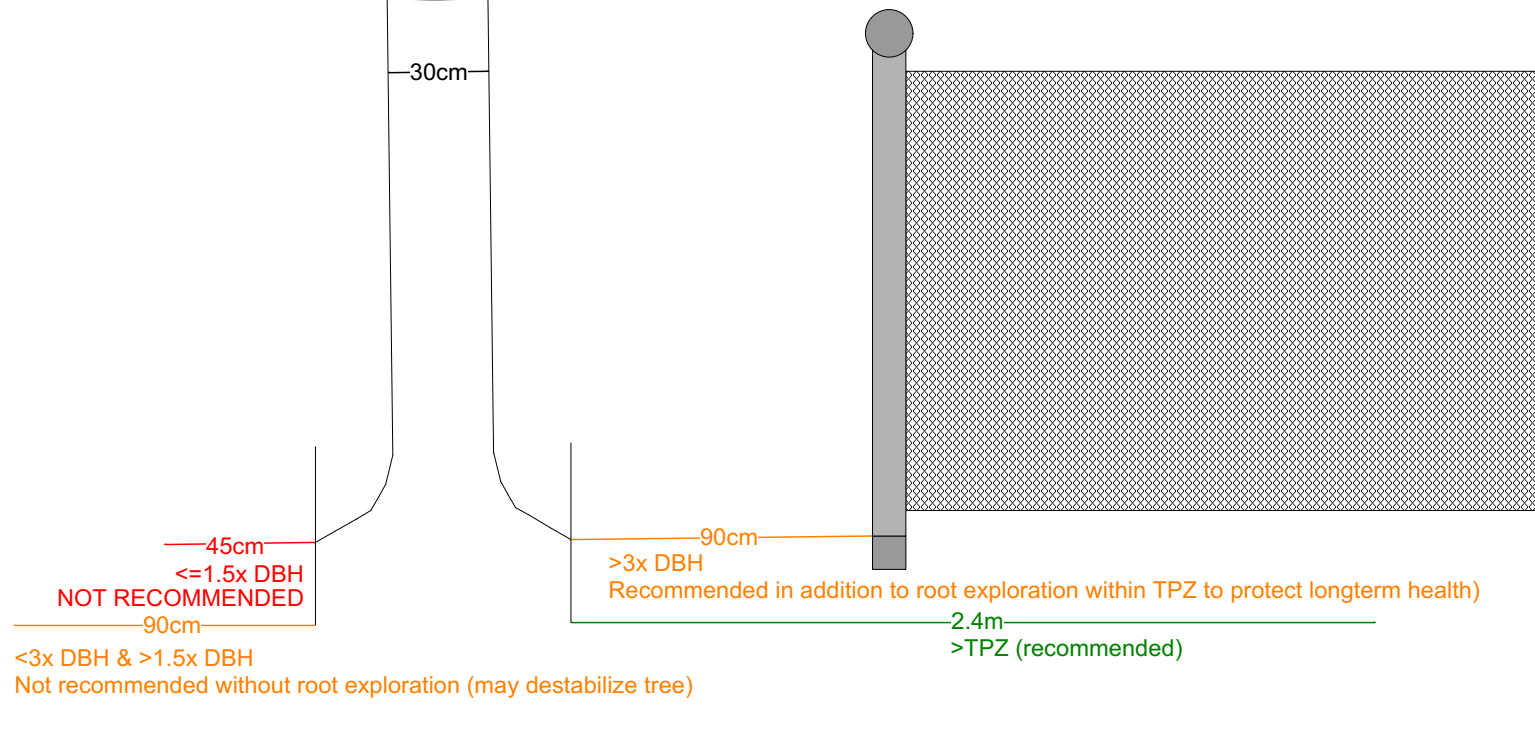


SCALE N/A APPLICATION #: SP-11-12. APPLICANT NAME: THE WELLINGTON IG INC.

TITLE
TREE PRESERVATION PLAN

SHEET 2/3

TPP-2



SCALE 1:50

SCALE 1:25

ROOT PROTECTION NOTES

1. Root exploration by hand digging or air spading to locate root locations is generally recommended when constructing a fence in proximity to trees.
2. Prior to a root exploration, this detail provides preliminary design recommendations based on critical root zones in order to help with planning and design of fence post locations.
3. In order to avoid **destabilizing trees**, fence posts should be at a minimum distance of 3x the tree DBH (diameter measured at 1.4m from the ground) and never within 1.5x the DBH of the tree(s), which could lead to an immediate hazard.
4. In order to protect the **longterm health** of the tree, fence posts should be constructed outside of the tree protection zone or away from any significant* roots as determined during the root exploration.
5. Any uncovered roots within the tree protection zones (or outside) should be cleanly pruned. Tearing roots hinders wound closure and can increase risk of disease and root rot.
6. Additional tree protection measures may be identified by the arborist as requirements of a municipality or as case specific recommendations.

*significant roots are greater than 2.5cm and depend on tree species, size and health as determined by the arborist.

<p>42 Guardsman Road Thornhill, ON L3T 6L4 416-932-0622 info@cmtrees.com CMTREES.COM BE GOOD TO YOUR TREES.</p>	TITLE	DETAIL NO.: TPF-I
	FENCE CONSTRUCTION NEAR TREES - DESIGN RECOMMENDATIONS	SCALE: AS SHOWN
		DATE: MAY 2022