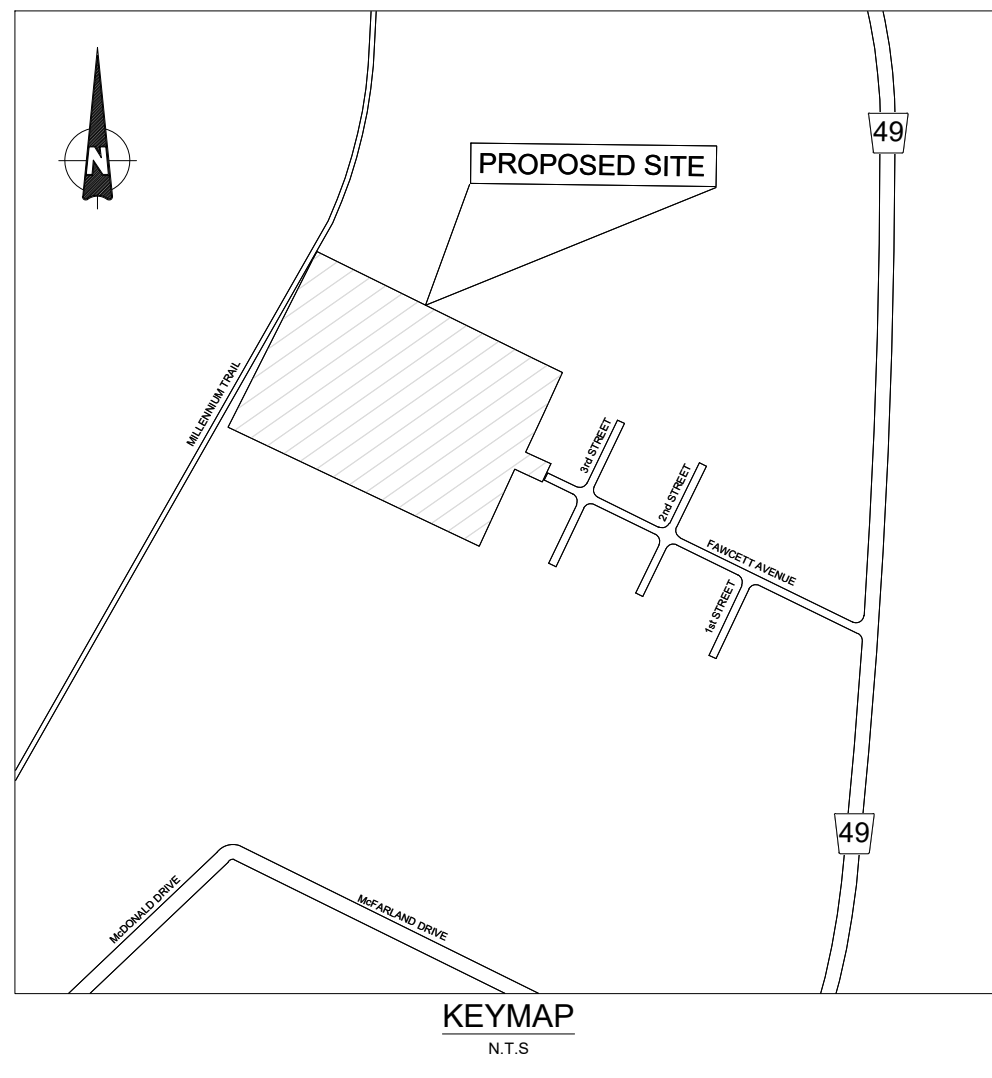


**DRAFT PLAN OF SUBDIVISION**  
**FAWCETTville SUBDIVISION**  
 PART OF LOT 64  
 COUNTY OF PRINCE EDWARD  
 PICTON, ON

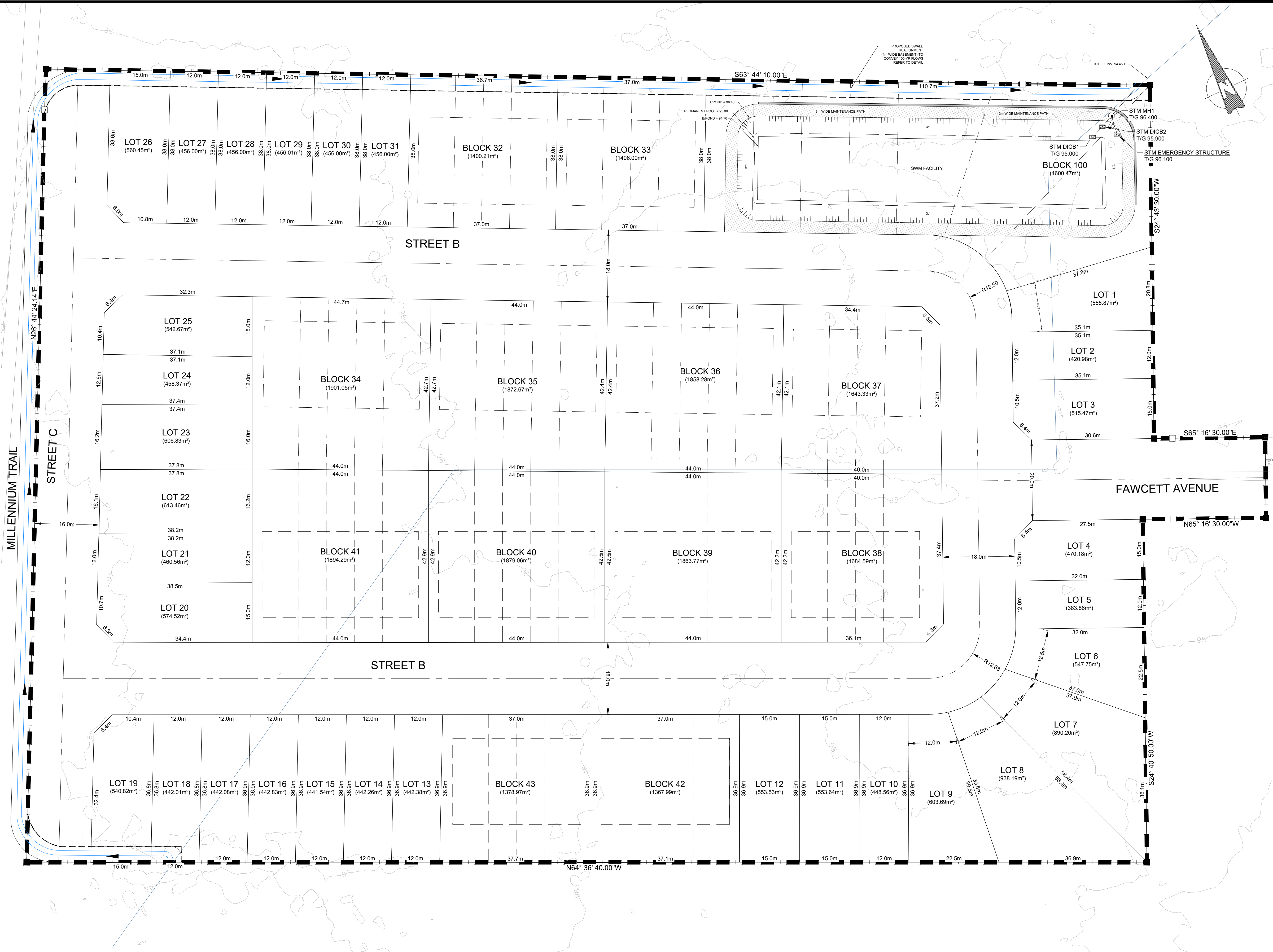
METRIC SCALE

**METRIC NOTE**  
 DISTANCES SHOWN ON THIS PLAN ARE IN METRES AND CAN BE CONVERTED TO FEET BY DIVIDING BY 0.3048.

**CONTOUR DATA**  
 CONTOUR AND TOPOGRAPHIC INFORMATION GENERATED USING INFORMATION PROVIDED BY AINLEY GRAHAM AND ASSOCIATES.



SITE LAND USE	AREA(ha)	AREA%	UNITS
LOTS 1 - 31 - SINGLE DETACHED LOTS	1.67	30.41	31
BLOCKS 32 - 42 - TOWNHOUSES	2.02	36.79	54
BLOCK 100 - SWM FACILITY	0.46	8.37	
RIGHT OF WAY	1.34	24.43	
<b>SITE TOTAL</b>	<b>5.49 ha</b>	<b>100.0%</b>	<b>85</b>



**ADDITIONAL INFORMATION UNDER SECTION 51 (17) OF THE PLANNING ACT**

- a. SEE SURVEYORS CERTIFICATE.
- b. AS SHOWN ON DRAFT PLAN.
- c. AS SHOWN ON DRAFT PLAN.
- d. SEE LAND USE SUMMARY.
- e. SEE KEY PLAN.
- f. AS SHOWN ON DRAFT PLAN.
- g. AS SHOWN ON DRAFT PLAN.
- h. MUNICIPAL WATER AND MUNICIPAL SEWER
- i. REFER TO THE GEOTECHNICAL REPORT PREPARED BY AINLEY GRAHAM AND ASSOCIATES
- k. AS SHOWN ON DRAFT PLAN.
- l. GARBAGE COLLECTION, FIRE PROTECTION, ROAD MAINTENANCE, SCHOOL BUSES, ETC.
- m. AS SHOWN ON DRAFT PLAN.

**SURVEYOR'S CERTIFICATE**  
 I CERTIFY THAT THE BOUNDARIES OF THE LAND TO BE SUBDIVIDED ARE CORRECTLY SHOWN.  
 DATE \_\_\_\_\_  
 KEITH WATSON, O.L.S.  
 WATSON LAND SURVEYORS Ltd.,  
 218 CHURCH STREET, BELLEVILLE, ON.  
 (613) 962-9521

**OWNER'S CERTIFICATE**  
 I AUTHORIZE AINLEY GROUP TO PREPARE AND SUBMIT THIS DRAFT PLAN OF SUBDIVISION TO PRINCE EDWARD COUNTY.  
 DATE \_\_\_\_\_  
 ERIC DENOUÏEN  
 PRESIDENT  
 HILDEN HOMES LTD.

REV.#	REVISIONS	DATE	INITIAL

Not Valid Unless Signed And Dated

SCALE: 1:500  
 DESIGN: JL  
 DRAWN: JL  
 CHECKED: VC  
 DATE: MAY 2023

**FAWCETTville SUBDIVISION**  
 COUNTY OF PRINCE EDWARD  
 PICTON, ON

DRAFT PLAN



CONTRACT No. 17533-1 DWG 17533-1 DP

K:\Projects\17533 - Fawcettville Subdivision\17533-1 Project\Drawing\_civil\current\17533-Draft Plan.dwg 2023-05-16 2:05 PM