

RURAL AGRICULTURAL N 38°39'40"W
61.0m

RURAL AGRICULTURAL

RURAL AGRICULTURAL

EXISTING SIGNAGE 'A'
TO BE UPDATED

N 51°19'50"E
51.8m

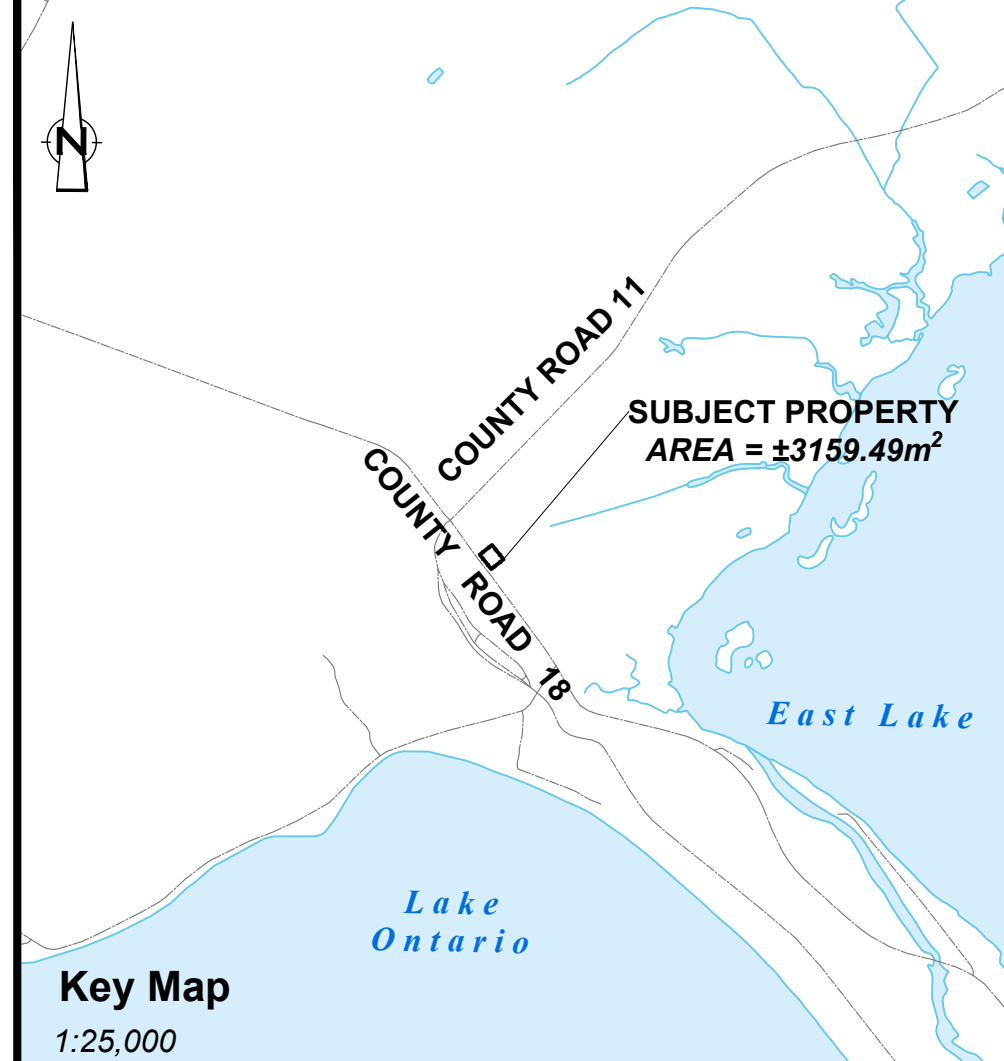
N 51°19'50"E
51.8m

POST MOUNTED BARRIER FREE
PARKING SIGN
1.5m HEIGHT

PROPOSED ROADSIDE
SIGNAGE 'B'

N 38°40'40"W
61.0m

COUNTY ROAD 18

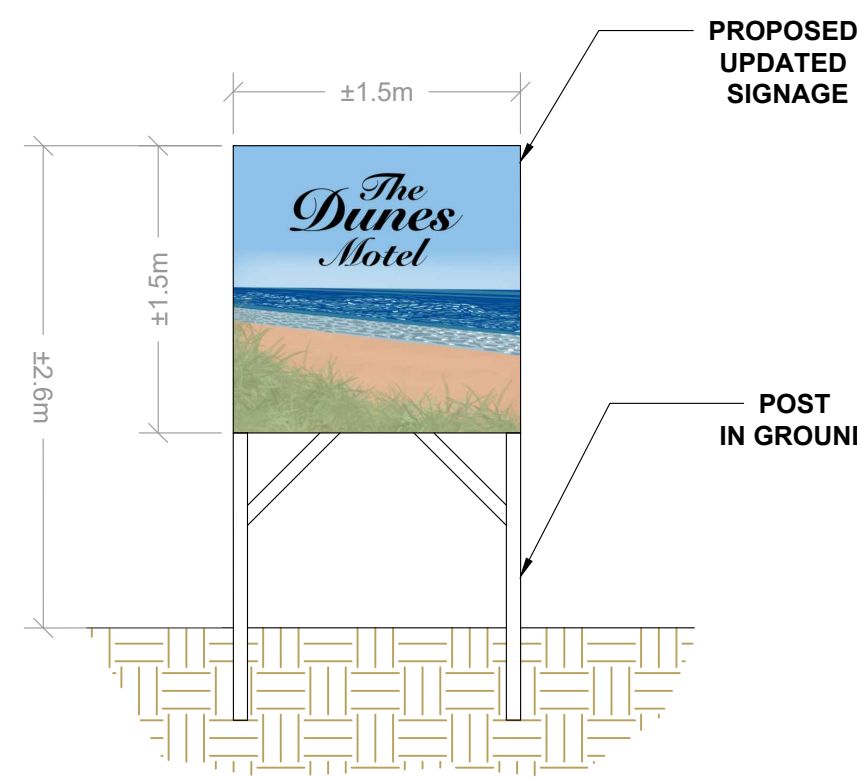


Key Map
1:25,000

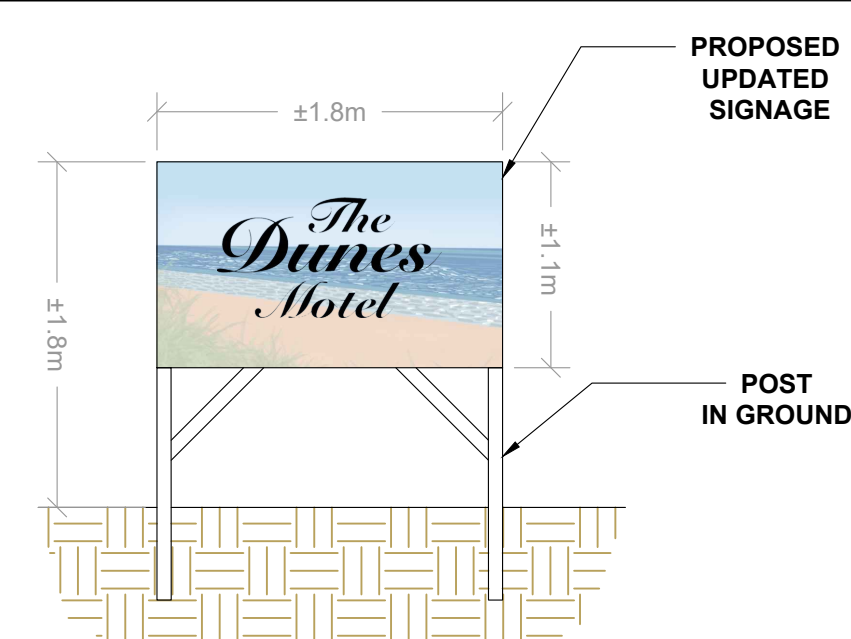
LEGEND

- SUBJECT PROPERTY
- EXISTING PARCEL
- PROPOSED DRIVEWAY
- PROPOSED WALKWAY

NOTES:
1. PROPERTY BOUNDARIES DERIVED FROM PLAN OF SURVEY 47R-3999,
PREPARED BY B. ROGER PICKARD O.L.S. 1988.

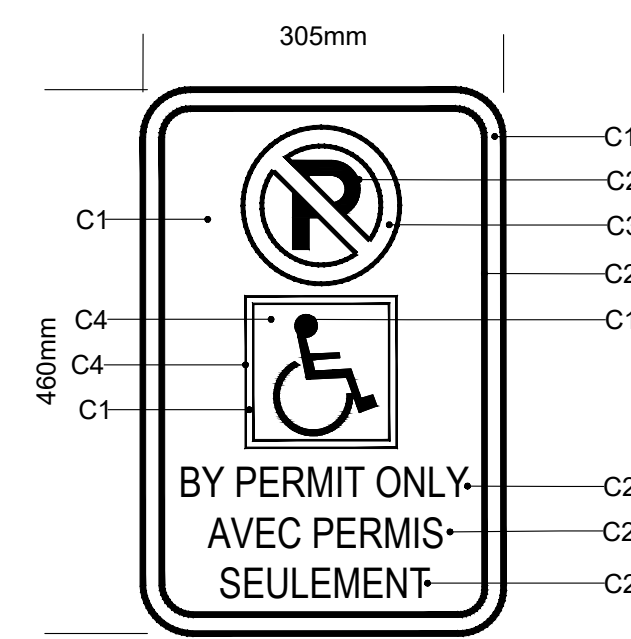


PROPOSED SIGNAGE 'A'
1:40
TO BE LIT BY DARK-SKY FRIENDLY LIGHTS



PROPOSED SIGNAGE 'B'
1:40
TO BE LIT BY DARK-SKY FRIENDLY LIGHTS

POST MOUNTED BARRIER FREE
PARKING SIGN
N.T.S.



- C1 WHITE
- C2 BLACK
- C3 RED
- C4 BLUE

ECOVUE consulting services inc. **EcoVue Consulting Services Inc.**
311 George St. N., Suite 200
Peterborough ON K9J 3H3
Tel: 705-876-8340 Fax: 705-742-8343
www.ecovueconsulting.com

DRAWN BY:	PROJECT No.: 21-2120
APPROVED BY:	HORIZ. SCALE: 1:150
REVISION DATE: AUGUST 24, 2023	PLOT DATE: AUGUST 24, 2023

OUTERBANKS MOTEL
FRASER YOUNG
PART OF LOT 4
CONCESSION NORTH SIDE OF EAST LAKE
TOWNSHIP OF AITCHA
PRINCE EDWARD COUNTY

PROPOSED SIGNAGE PLAN

SPCA-8